
JPD Monthly Report

August 2010

Heather Clements,
Crime Analyst



Executive Summary

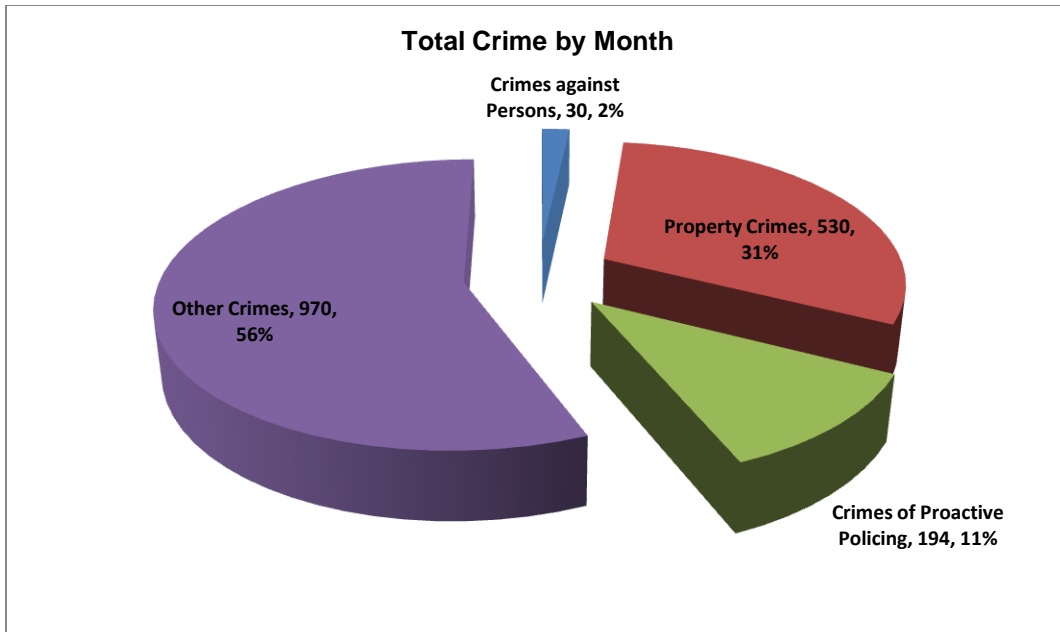
The purpose of the Jonesboro Police Department Monthly Report is to compile data into one integrated report for review, allowing for a seamless flow of information for better decision-making. After each department collates their monthly numbers and sends it to Crime Analysis, it is organized into sections of departmental data, analyzed and packaged, and finally disseminated to department heads, the Chief of Police, the City Mayor, and the City Council. Major sections include Crime Analysis, Emergency 911, Uniform Police Division, Prowl, Criminal Investigative Division, Warrants, Drug Task Force, Traffic, Parking Enforcement, Animal Control, Fleet Maintenance, Records, and Professional Standards.

Crime Analysis

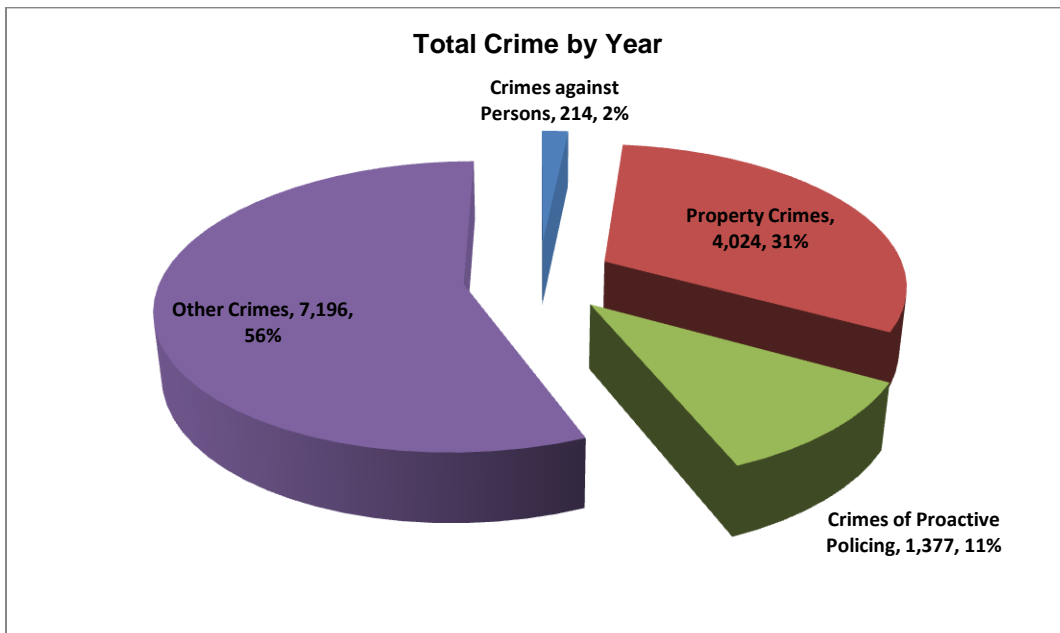
The Crime Analysis division consists of a Crime Analyst and a Crime Analyst Assistant. The Crime Analyst position is responsible for the analysis and dissemination of crime activity data and the collection and maintenance of crime intelligence information for the city of Jonesboro. Additionally, the Crime Analyst is charged with providing the department with current and accurate crime maps, presenting crime activity data to audiences of interest, and responding to requests for crime data from civilians and departmental staff. Data exported from this division is used by field agents for more effective, efficient policing, administration for improved staffing decisions, and the Mayor's office for community decision making and enhanced public relations. This section is broken down into total crime, crimes against persons, property crimes, crimes of proactive policing, other crimes, and arrest demographics.

Total Crime

The crime activity for this month is at a total of 1,724 offenses, up from 1,528 offenses last August, a 13% increase. Other crimes absorb the majority of this month's crime activity at 56% ($n = 970$). Property crimes fall in second place with 31% ($n = 530$). Following in third and fourth places are crimes of proactive policing at 11% ($n = 194$) and crimes against persons with only 2% ($n = 30$).

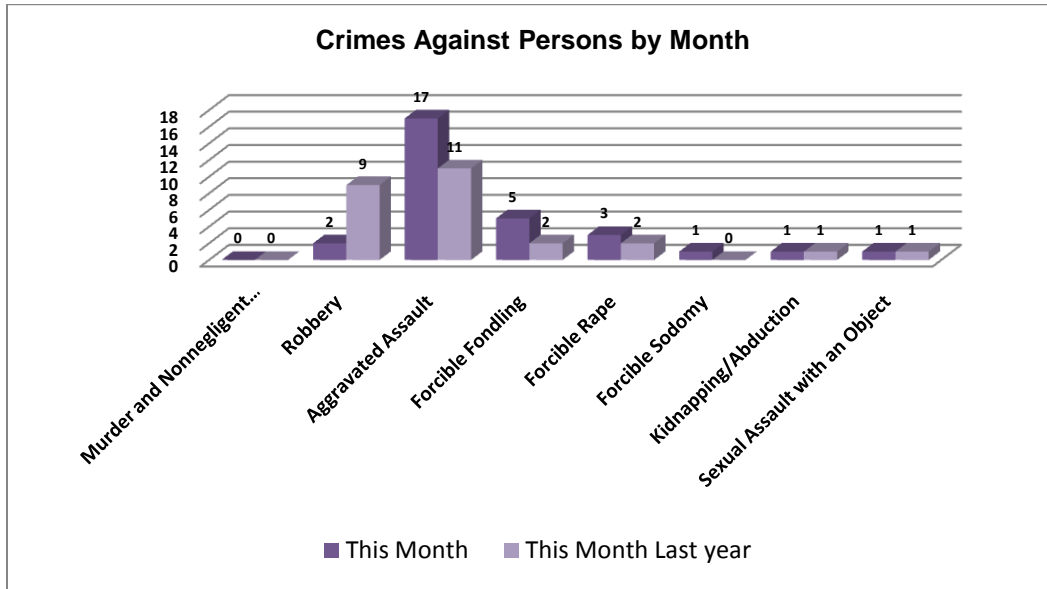


Year to date data includes January through August, of which there is a total of 12,811 offenses, up from 10,424 last August, a 23% increase. Again, other crimes has the highest percentage to total crimes at 56% ($n = 7,196$). Similar to this month's data, property crimes take second place at 31% ($n = 4,024$). Following are the crimes of proactive policing at 11% ($n = 1,377$) and crimes against persons at 2% ($n = 214$).

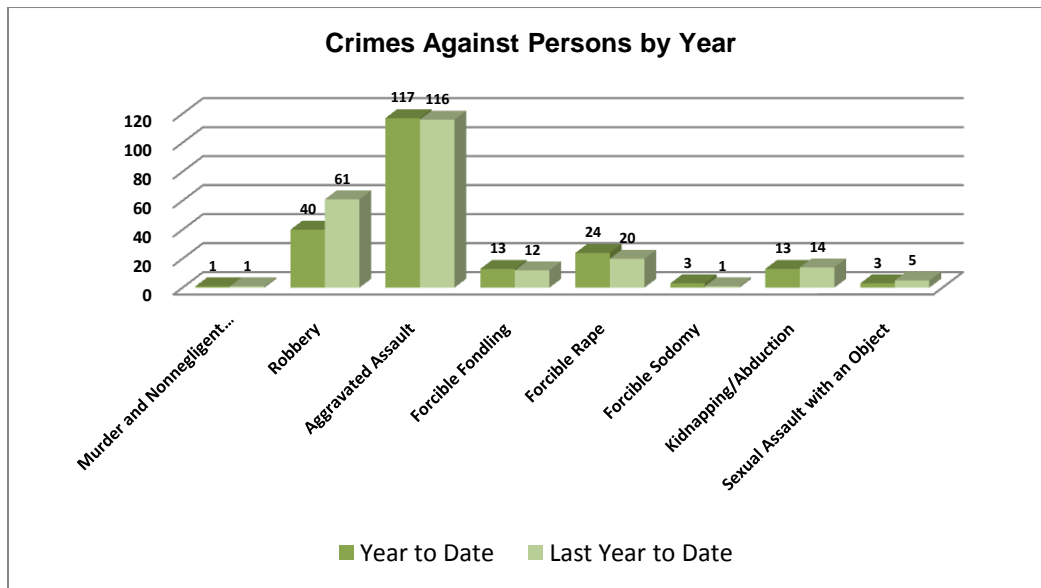


Crimes against Persons

There are 8 crimes that make up this section. There were a total of 30 offenses in this area this month, up from 26 last August, a 15% increase. The following chart demonstrates this month's activity compared to August of last year's activity in all 8 areas. Significantly lower are the robberies down to 2 from 9, a 78% decrease. Significantly higher are the aggravated assaults (up 55%) and forcible fondling (up 150%).



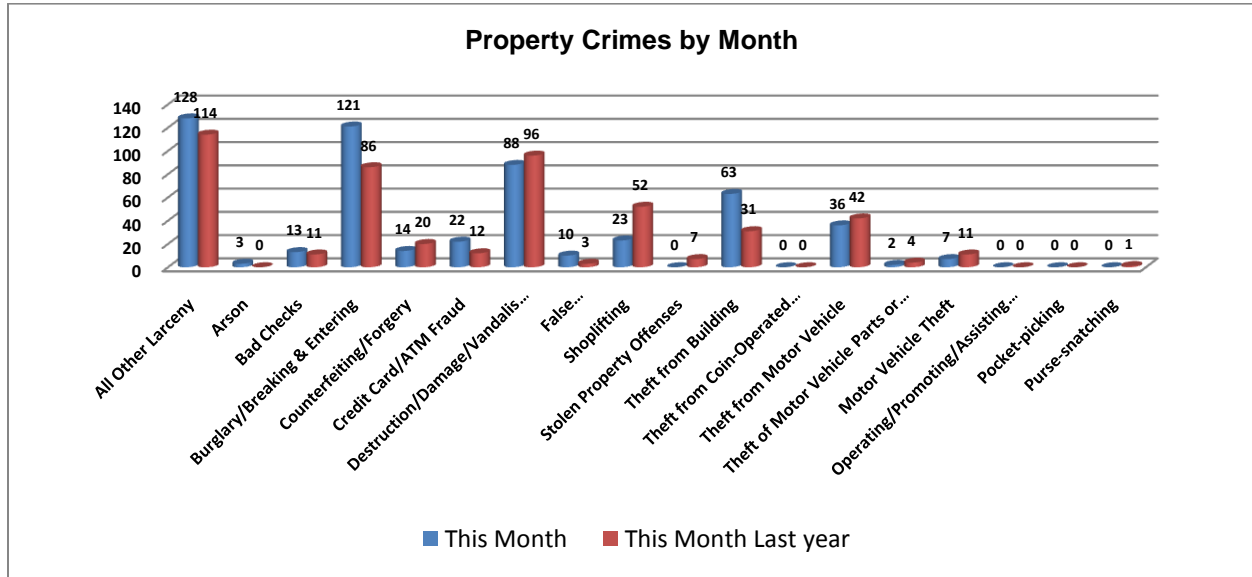
Below is a bar graph indicating the year to date data for crimes against persons. Total number of year to date crimes against persons is 214, down from 230 last August, a 7% decrease. Robberies are down 34% from this time last year.



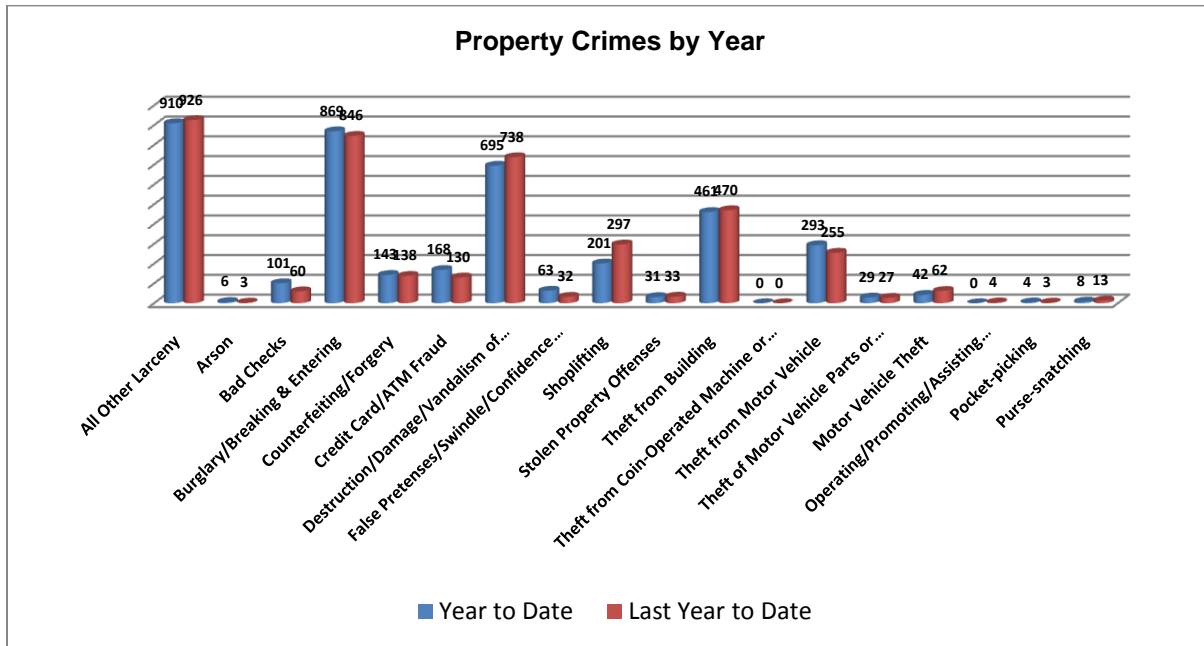
*Arkansas State University had 1 murder on campus in April, but this statistic is reported by ASU and not the City of Jonesboro.

Property Crimes

This section displays the criminal activity for 18 crimes, all against property. This month, there were a total of 530 property crimes, an 8% increase from 490 last August. Shoplifting is down 56% from last August, while burglary is up 41% and theft from a building is up 103%.

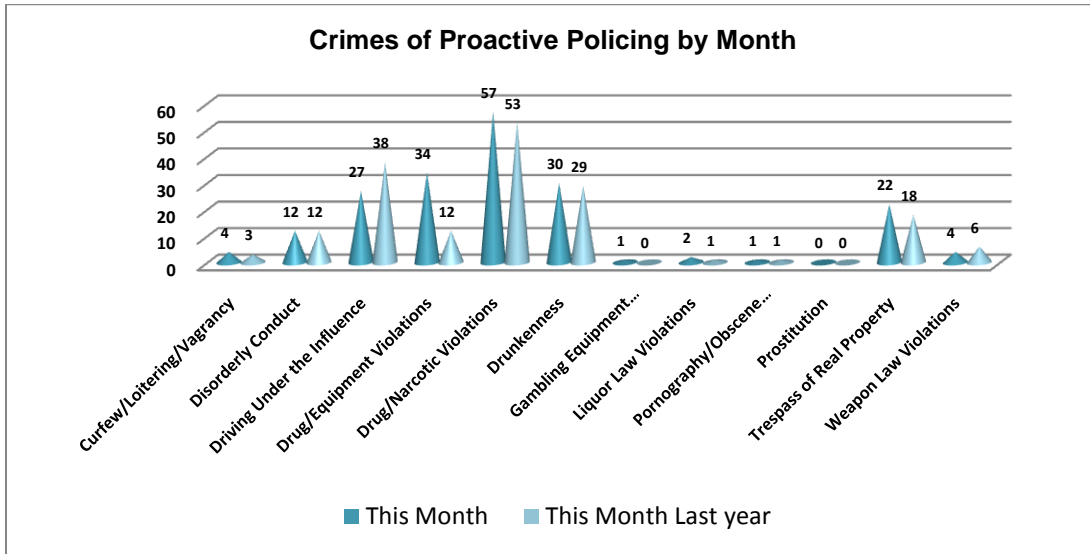


To date this year, 4,024 property offenses have occurred, down from 4,037 last year at this same time, which is virtually no significant change. While shoplifting is down 32%, swindling is up 97% and bad checks are up 68%.

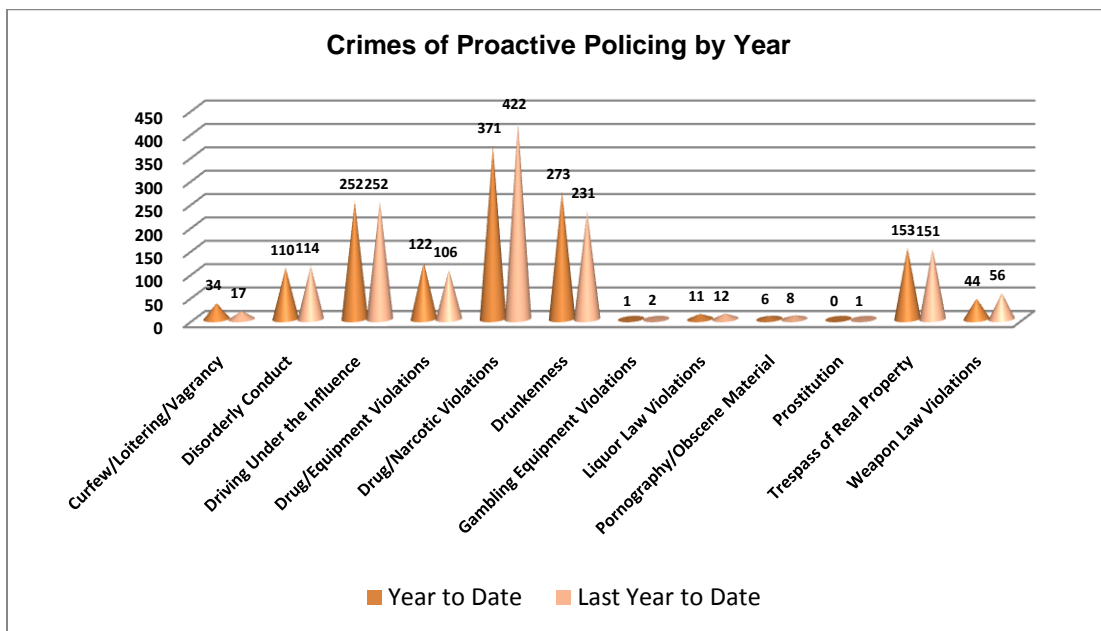


Crimes of Proactive Policing

Crimes of proactive policing are those crimes that result from police officers actively policing the streets to combat certain types of street crime. Twelve crimes fall under this category. A total of 194 offenses have occurred this month, a 12% decrease from last August ($n = 173$). One significant change this month is that the drug/equipment violations are up 183%. DUI offenses are down 29%.

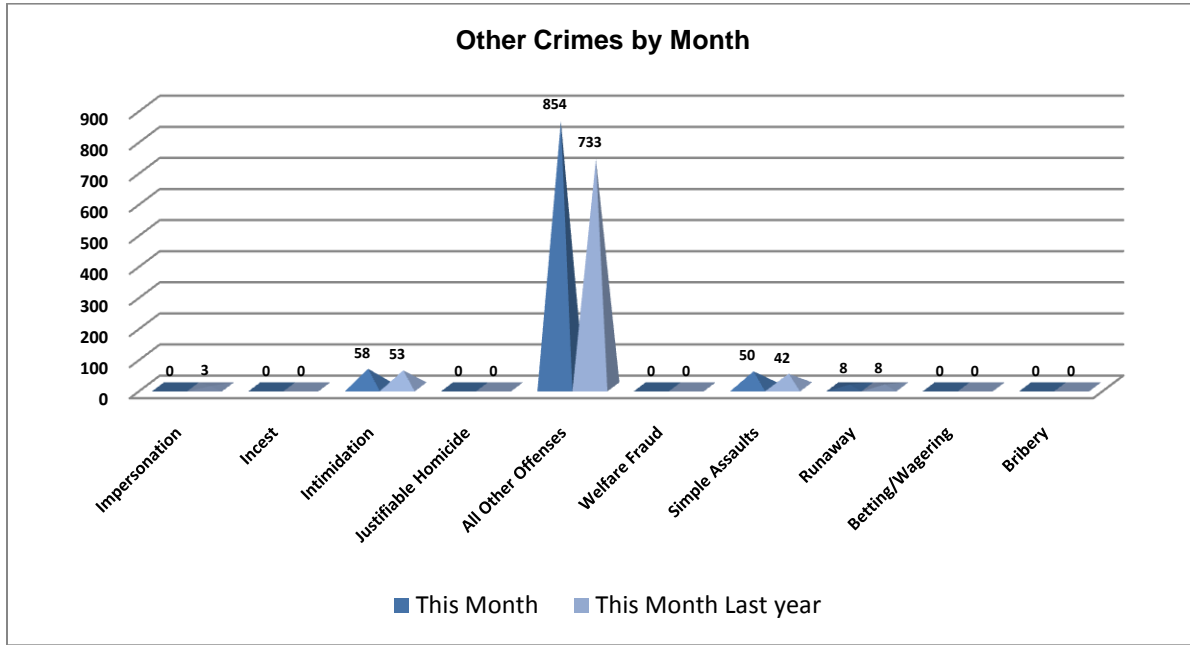


To date for the year, there have been 1,377 crimes of proactive policing, only up from 1,372. Drug/narcotic violations are down 12%. Drunkenness is up 18%.

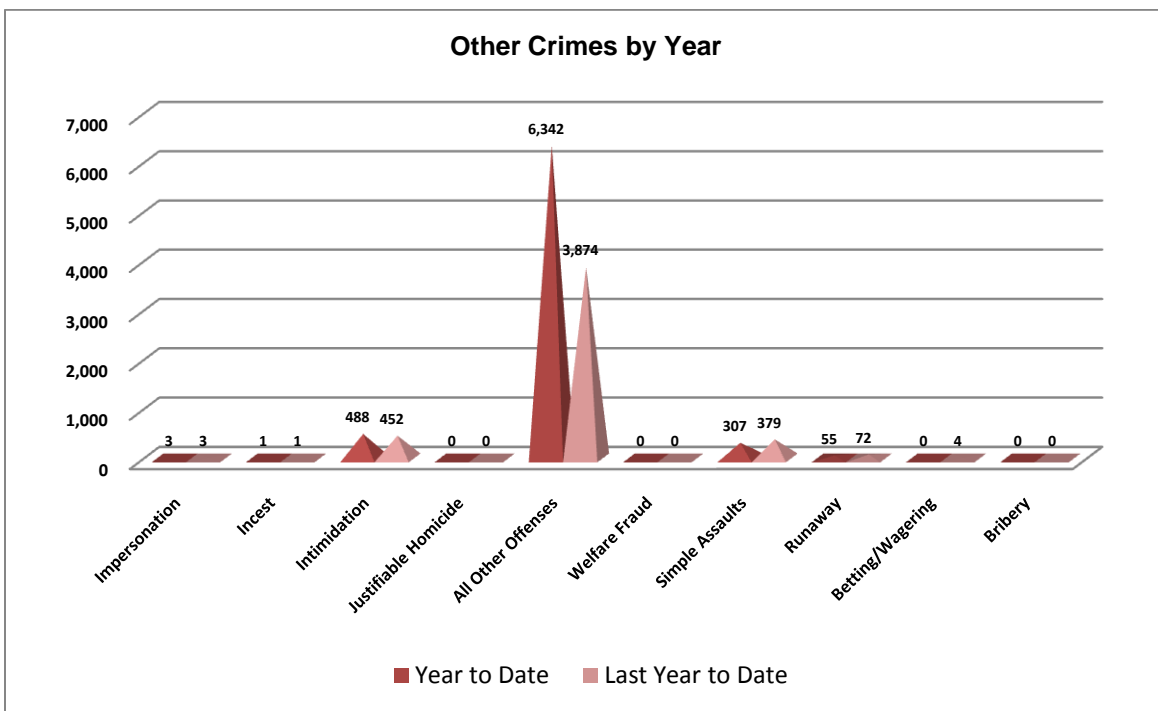


Other Crimes

There are 10 crimes that fall into the other crimes category. This month, there have been a total of 970 other crimes up from 839 last August, a 16% increase. Significantly higher than last August are the all other offenses, up 17%.

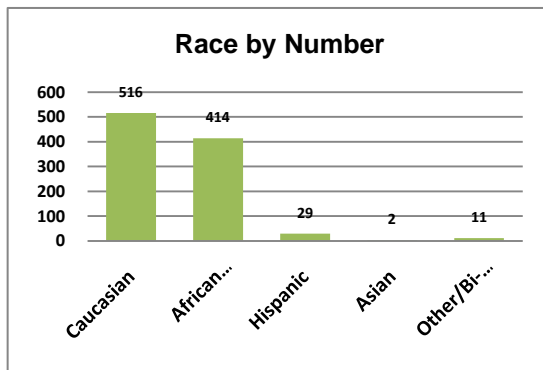
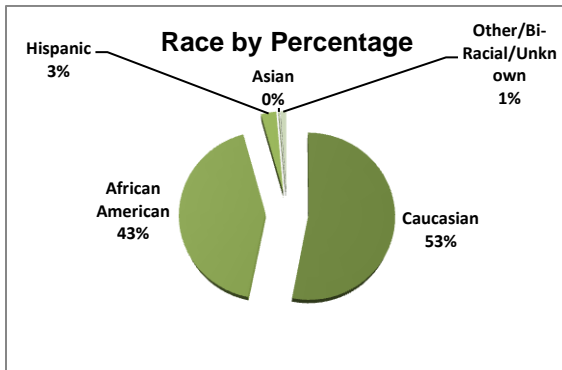
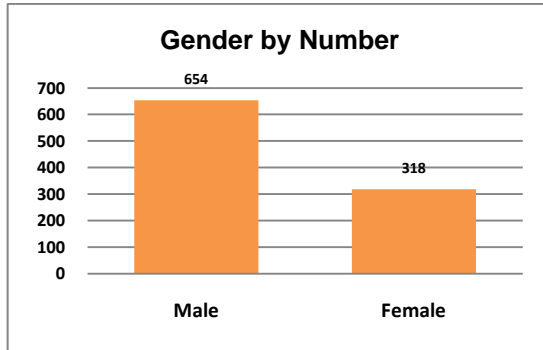
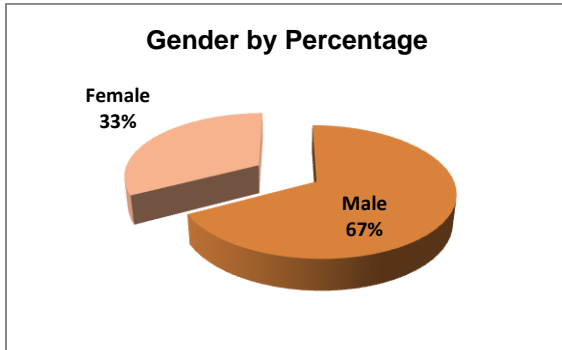


To date this year, there have been 7,196 other crimes, up from 4,785 last August, a 50% increase. Similar to above, all other offenses are up by 64%.

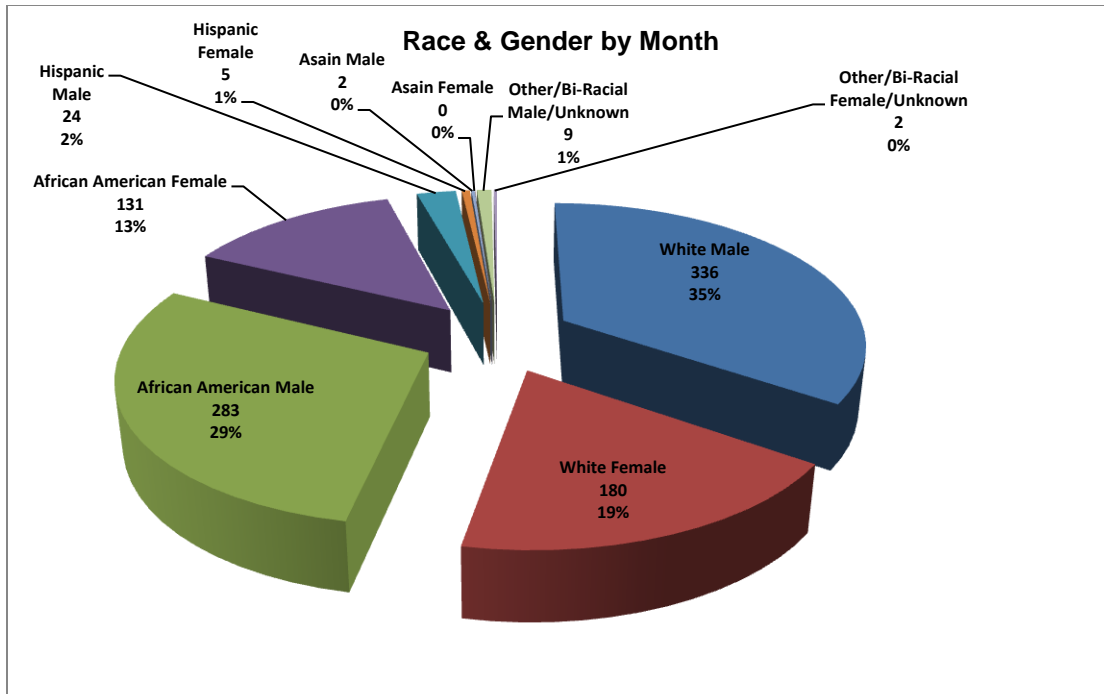


Arrest Demographics

This section will break down race and gender for the 972 arrests this month. The majority of offenders have been male ($n=654$), as opposed to female ($n=318$) and Caucasian ($n=516$) and African American ($n=414$) as opposed to Hispanic ($n=29$), Asian ($n=2$), or other/unknown/bi-racial ($n=11$).



Caucasian males make up the majority of offenders for the month of August, totaling 35% ($n = 336$). African American males account for 29% ($n = 283$) of the offenders this month. Caucasian females make up 19% ($n = 180$) and African American females make up 13% ($n = 131$). The remaining 4% is made up of Hispanic males (1%) and females (2%) and other/bi-racial males (1%). This distribution can be reviewed in the pie chart below (see page 9).



*Although the chart indicates a 0% for Hispanic female (n=2) Asian Male (n=1), and other/bi-racial females (n=2) arrestees, the percentage is so small that excel rounds it to 0%.

Emergency 911

Also known as Public Safety Answering Point (PSAP), the Emergency 911 Division is responsible for answering all calls from public for emergency assistance, accessing the needed information to best assist, and then assigning the most efficient and effective emergency response. In addition, this division is responsible for setting priority call dispatching to field units including Police, Fire, and EMS. Emergency 911 also maintains all records for radio logs, calls for service, and other emergency service data collections.

Calls by Type	This Month	This Month Last Year	YTD	Last YTD	Change By Month	Change YTD
Land Line	978	948	7,096	8,105	3%	-12%
Cell Phone	3,821	3,292	26,902	27,770	16%	-3%
Admin Lines	17,115	17,056	124,287	136,762	0%	-9%
TOTALS	21,914	21,296	158,285	172,637	3%	-8%

Calls by Agency	This Month	This Month Last Year	YTD	Last YTD	Change By Month	Change YTD
Jonesboro PD Calls	6,317	5,712	49,185	59,638	11%	-18%
Craighead Cty Sheriff	1,171	1,197	8,457	10,482	-2%	-19%
Jonesboro Fire Dpt - dispatch	180	227	1,226	1,328	-21%	-8%
Jonesboro Fire Dpt - Med Asst	105	117	927	1,707	-10%	-46%
Craighead Cty - Fire	72	49	456	496	47%	-8%
Craighead Cty - 1st Responder	83	97	575	629	-14%	-9%
Emerson Ambulance	253	212	1,961	1,777	19%	10%
Medic One	278	286	2,338	2,370	-3%	-1%
Air Evac	0	2	9	8	-100%	13%
Coroner	2	2	21	17	0%	24%
ARK State Police	20	16	125	85	25%	47%
Jonesboro Animal Control	81	80	564	180	1%	213%
Wreckers Called	141	179	1,371	1,561	-21%	-12%
TOTALS	8,703	8,176	67,215	80,278	6%	-16%

Calls by Municipality	This Month	This Month Last Year	YTD	Last YTD	Change By Month	Change YTD
Bay PD	102	173	861	1379	-41%	-38%
Bono PD	141	173	1531	1834	-18%	-17%
Brookland PD	164	227	1662	1988	-28%	-16%
Caraway PD	126	132	818	641	-5%	28%
Cash PD	36	32	435	378	13%	15%
Egypt PD	33	41	170	212	-20%	-20%
Lake City PD	114	155	988	1009	-26%	-2%
Monette PD	169	165	1140	1316	2%	-13%
TOTALS	885	1,098	7,605	8,757	-19%	-13%

Uniform Patrol Division

The UPD is responsible for responding to calls into the Emergency – 911 Division by civilians and are normally the first responders. Jonesboro is divided into 6 patrol districts. Officers from UPD are assigned to a district and work the same district every shift. In addition, when a Traffic Officer is not available, a UPD Officer will respond to traffic accidents and assist in directing traffic when necessary.

Incidents	This Month	This Month Last Year	YTD	Last YTD	Change By Month	Change YTD
Street Accidents	66	96	816	1,055	-31%	-23%
Private Property Accidents	57	51	402	459	12%	-12%
Traffic Citations	738	717	5,610	4,599	3%	22%
DWI	20	16	168	219	25%	-23%
Mis. Arrests	1,998	1,607	12,611	10,299	24%	22%
Felony Arrests	168	171	1,142	1,102	-2%	4%
Public Intoxication Arrests	9	3	71	92	200%	-23%
Calls For Service	7,765	5,776	56,737	51,281	34%	11%
Alarms	222	213	1,838	1,832	4%	0%
Parking Citations	2	4	10	22	-50%	-55%
Written Warnings	1,244	476	6,675	3,560	161%	88%
TOTALS	12,289	9,130	86,080	74,520	35%	16%
Patrol Miles	72,709	56,491	491,252	444,090	29%	11%
Hours Worked	10,328	8,565	78,478	68,882	21%	14%

Prowl

The Prowl unit is a uniformed street crimes unit specializing in criminal patrol, narcotics enforcement, gang investigation, and prostitution activity. The unit conducts directed patrols, investigates citizen complaints of street-level criminal activity, and directly assists the 2nd Judicial Drug Task Force. PROWL also assists any division within the Jonesboro Police Department at any time when needed.

Incidents	This Month	This Month Last Year	YTD	Last YTD	Change By Month	Change YTD
Street Accidents	0	0	0	1	N/C	-100%
Private Property Accidents	0	0	1	0	N/C	N/C
Traffic Citations	35	4	255	176	775%	45%
DWI	0	0	1	1	N/C	0%
Mis. Arrests	80	45	739	897	78%	-18%
Felony Arrests	25	27	221	337	-7%	-34%
Drug Arrests	35	28	228	303	25%	-25%
Public Intoxication Arrests	0	0	0	0	N/C	N/C
Calls For Service	79	31	764	500	155%	53%
Alarms	0	0	0	0	N/C	N/C
Parking Citations	0	0	0	0	N/C	N/C
Written Warnings	22	12	189	160	83%	18%
Assists	0	0	0	0	N/C	N/C
TOTALS	276	147	2,398	2,375	88%	1%
Value of Drugs Seized	\$2,845	\$8,990	\$52,818	\$130,946	-68%	-60%
Value of Assets Seized	17,762	1,110	55,778	94,040	1500%	-41%
Patrol Miles	3,600	5,430	40,200	43,135	-34%	-7%

Criminal Investigative Division

The CID is responsible for conducting follow-up investigations into criminal acts reported to the Jonesboro Police Department. The primary goal is to collect and present evidence that conclusively leads to a successful arrest. Additionally, CID is charged with clearing additional crimes, recovering stolen property, preventing additional crimes, and gathering intelligence information.

Investigations	This Month	This Month Last Year	YTD	Last YTD	Change By Month	Change YTD
Criminal Investigations Assigned	118	93	727	798	27%	-9%
Criminal Investigations Closed	114	92	691	669	24%	3%
Cleared by Arrests	69	49	393	350	41%	12%
Unfounded	12	11	66	84	9%	-21%
Exceptionally Cleared	20	21	116	151	-5%	-23%
Filed With Prosecutors Office	6	5	57	35	20%	63%
TOTALS	339	271	2050	2087	25%	-2%

Crimes Against Persons	This Month	This Month Last Year	YTD	Last YTD	Change By Month	Change YTD
Criminal Investigations Assigned	23	22	149	181	5%	-18%
Criminal Investigations Closed	30	23	165	183	30%	-10%
Cleared by Arrests	18	11	110	114	64%	-4%
Unfounded	1	2	6	20	-50%	-70%
Exceptionally Cleared	7	9	35	44	-22%	-20%
Filed With Prosecutors Office	4	1	14	5	300%	180%
TOTALS	83	68	479	547	22%	-12%

Property Crimes	This Month	This Month Last Year	YTD	Last YTD	Change By Month	Change YTD
Criminal Investigations Assigned	83	63	509	537	32%	-5%
Criminal Investigations Closed	67	58	413	391	16%	6%
Cleared by Arrests	46	35	258	221	31%	17%
Unfounded	7	8	46	55	-13%	-16%
Exceptionally Cleared	13	11	75	93	18%	-19%
Filed With Prosecutors Office	1	4	34	22	-75%	55%
TOTALS	217	179	1335	1319	21%	1%

Crimes Against Children	This Month	This Month Last Year	YTD	Last YTD	Change By Month	Change YTD
Criminal Investigations Assigned	7	5	45	38	40%	18%
Criminal Investigations Closed	10	5	54	39	100%	38%
Cleared by Arrests	5	3	25	12	67%	108%
Unfounded	4	1	14	10	300%	40%
Exceptionally Cleared	0	1	6	7	-100%	-14%
Filed With Prosecutors Office	1	0	1	0	N/C	N/C
TOTALS	27	15	145	106	80%	37%

Warrants

The Warrants Division is responsible for serving warrants, criminal summonses, and subpoenas that are issued by the District Court. On city court days, the Warrants Division provides a bailiff for court and a transport officer. In addition, this Division is responsible for transporting wanted persons arrested in other jurisdictions back to Jonesboro. The STEP program operates within this division and is a grant-funded operation in which officers can get paid overtime to enforce the safety belt law.

Arrests	This Month	This Month Last Year	YTD	Last YTD	Change By Month	Change YTD
Misdemeanor	1669	540	9027	5907	209%	53%
Felony	1	4	6	10	-75%	-40%
Total Arrests	1670	544	9033	5917	207%	53%

Warrants by Activity	This Month	This Month Last Year	YTD	Last YTD	Change By Month	Change YTD
Subpoenas	357	402	3198	4081	-11%	-22%
Commitments	4	3	34	28	33%	21%
Traffic Citations			14	2	N/C	600%
Complaints				8	N/C	-100%
Assist				1	N/C	-100%
Alarms				1	N/C	-100%

Hours by Activity	This Month	This Month Last Year	YTD	Last YTD	Change By Month	Change YTD
SI Criminal	235.42	94	1643.37	1213.62	150%	35%
Court	113.5	88	1016.33	639.92	29%	59%
Prisoner Transport	31.67	55.5	246.07	770.17	-43%	-68%

Hours Worked	This Month	This Month Last Year	YTD	Last YTD	Change By Month	Change YTD
Regular Hours Worked	771	399	4975.5	4380.5	93%	14%
Overtime Hours Worked	11	9.5	18	111.75	16%	-84%
TOTAL Hours Worked	782	408.5	4993.5	4492.25	91%	11%

Mileage	This Month	This Month Last Year	YTD	Last YTD	Change By Month	Change YTD
Total Mileage	3680	2372	23820	19575	55%	22%

STEP	This Month	This Month Last Year	YTD	Last YTD	Change By Month	Change YTD
DWI Arrest	1		5	0	N/C	N/C
DUI Arrest					N/C	N/C
Traffic Citations	98	181	1187	883	-46%	34%
Felony Arrests					N/C	N/C
Drug Arrests					N/C	N/C
Hours Worked	58	153.5	1032.5	1025.25	-62%	1%
Miles Driven	472	1249	7233	7811	-62%	-7%

Drug Task Force

The DTF is responsible for investigating major drug traffickers in the area, including all types of illegal drugs. They work closely with local, state, and federal agencies to eradicate drugs from the community.

INVESTIGATIONS	This Month	This Month Last Year	YTD	Last YTD	Change By Month	Change YTD
Opened	27	32	231	242	-16%	-5%
Closed	31	35	202	223	-11%	-9%
TOTAL	34	42	265	278	-19%	-5%

With Nexus to Jonesboro	This Month	This Month Last Year	YTD	Last YTD	Change By Month	Change YTD
Opened	34	37	201	257	-8%	-22%
Closed		0		0	N/C	N/C
TOTAL	34	37	201	257	-8%	-22%

Outside Jonesboro (No Known Nexus)	This Month	This Month Last Year	YTD	Last YTD	Change By Month	Change YTD
Opened	0	5	15	12	-100%	25%
Closed	0	0		0	N/C	N/C
TOTAL	0	5	15	12	-100%	25%

ASSISTANCE RENDERED	This Month	This Month Last Year	YTD	Last YTD	Change By Month	Change YTD
Assist to Outside Agencies	2	8	26	32	-75%	-19%
Assist to Jonesboro UPD/CID	17	20	124	154	-15%	-19%

ARRESTS	This Month	This Month Last Year	YTD	Last YTD	Change By Month	Change YTD
Miscellaneous	11	15	48	79	-27%	-39%
Felony	43	40	309	282	8%	10%
Marijuana	15	6	63	55	150%	15%
Cocaine	2	0	13	13	N/C	0%
Crack Cocaine	2	4	35	43	-50%	-19%
Methamphetamine/ICE	6	7	77	54	-14%	43%
LSD	0	0	0	0	N/C	N/C
Extasy (MDMA or Other Designer Drug)	1	2	5	7	-50%	-29%
Prescription	3	4	17	27	-25%	-37%
Opiates (Heroin,Opium)	0	1	0	9	-100%	-100%
Labs	2	1	19	23	100%	-17%
All Other Drug Offenses	0	0	0	1	N/C	-100%

ASSET FORFEITURE	This Month	This Month Last Year	YTD	Last YTD	Change By Month	Change YTD
Vehicles Seized(No.)	0	0	5	4	N/C	25%
Value of Assets Seized(Includes Value of vehicles)	\$100	\$425	\$43,857	\$46,802	-76%	-6%
Asset Value Awarded to Jonesboro PD (State)		\$0	\$0	\$0	N/C	N/C
Asset Value Awarded to Jonesboro PD (Federal)		\$0	\$0	\$0	N/C	N/C
Asset Value Awarded to Jonesboro PD (Total)		\$0	\$0	\$0	N/C	N/C

ARRESTS DEMOGRAPHY	This Month	This Month Last Year	YTD	Last YTD	Change By Month	Change YTD
White	16	22	116	153	-27%	-24%
African American	8	8	62	80	0%	-23%
Latino	5	2	25	16	150%	56%
Asian	0	0	1	0	N/C	N/C
Other/Bi-Racial	0	0	0	0	N/C	N/C
Male	15	22	153	171	-32%	-11%
Female	4	7	36	61	-43%	-41%
White Male	13	14	88	96	-7%	-8%
White Female	3	6	31	47	-50%	-34%
African American Male	8	8	62	63	0%	-2%
African American Female	0	0	2	17	N/C	-88%
Latino Male	4	2	21	16	100%	31%
Latino Female	1	0	3	3	N/C	0%
Asian Male	0	0	1	0	N/C	N/C
Asian Female	0	0	0	0	N/C	N/C
Other/Bi-Racial Male	0	0	0	0	N/C	N/C
Other/Bi-Racial Female	0	0	0	0	N/C	N/C

Traffic

Comprised of three motor units and three Chargers, the Traffic Enforcement Unit responds to traffic accidents and provides increased enforcement in particularly challenging areas. This unit also provides extra coverage for specific congestion problems and special events in the community. Last, they work details targeting specific issues, such as DWI enforcement and traffic safety checkpoints.

Incidents	This Month	This Month Last Year	YTD	Last YTD	Change By Month	Change YTD
Street Accidents	116	110	1020	921	5%	11%
Private Property Accidents	50	40	303	318	25%	-5%
Traffic Citations	113	320	1978	2198	-65%	-10%
DWI	0	2	25	27	-100%	-7%
Mis. Arrests	12	27	134	215	-56%	-38%
Felony Arrests	7	0	22	9	N/C	144%
Drug Arrests	0	0	0	0	N/C	N/C
Public Intoxication Arrests	0	0	2	0	N/C	N/C
Calls For Service	257	240	2133	1831	7%	16%
Alarms	2	7	11	20	-71%	-45%
Parking Citations	0	0	0	26	N/C	-100%
Written Warnings	70	7	881	33	900%	2570%
TOTALS	627	753	6509	5598	-17%	16%
Value of Asstes Seized	\$0	\$0	\$0	\$0	N/C	N/C
Patrol Miles	4,819	5,580	43,277	41,167	-14%	5%
Hours Worked	803	839.5	6332	6365.5	-4%	-1%

Parking Enforcement

The Parking Enforcement Division is responsible for enforcing parking laws in the downtown area. This service provides a safe and convenient parking situation for the public.

CITATIONS ISSUED	This Month	This Month Last Year	YTD	Last YTD	Change By Month	Change YTD
Citations	57	71	396	603	-20%	-34%
Verbal Warnings	0	0	0	0	N/C	N/C

MINUTES BY ACTIVITY	This Month	This Month Last Year	YTD	Last YTD	Change By Month	Change YTD
Office	825	1,165	9,275	8,593	-29%	8%
Admin(Non-Office)	685	570	7,695	7,010	20%	10%
Community	0	0	0	0	N/C	N/C
Training	0	0	0	0	N/C	N/C
Patrol	6,200	5,895	29,620	23,420	5%	26%

Animal Control

The Animal Control Division is responsible for educating the public on safe and humane issues regarding animal treatment, enforcing all animal laws and ordinances, assisting the public in resolving animal issues, and protecting the safety and welfare of the citizens and animals in this community.

Incidents	This Month	This Month Last Year	YTD	Last YTD	Change By Month	Change YTD
Barking Complaints	12	14	67	63	-14%	6%
Bite Reports	7	15	78	91	-53%	-14%
Door Hangers	32	26	276	205	23%	35%
Welfare Checks	101	82	683	531	23%	29%
Advised of Rights	296	364	2,242	2,186	-19%	3%
Incident Reports	4	3	51	58	33%	-12%
Gone on Arrival	54	86	364	489	-37%	-26%
Complaints	587	885	5,318	5,056	-34%	5%
Desk Complaints	1,052	1,095	7,648	6,616	-4%	16%
Captured Dogs	132	121	1,074	953	9%	13%
Captured Cats	13	18	108	93	-28%	16%
Captured Wildlife	55	41	288	184	34%	57%
Chemical Captures	3	11	46	72	-73%	-36%
Traps	17	37	167	166	-54%	1%
Deceased Animals	72	65	595	729	11%	-18%
Assist J.P.D.	7	5	60	39	40%	54%
Assist C.S.O.	3	3	5	9	0%	-44%
Public Relations	582	217	4,699	1,347	168%	249%
CITATIONS ISSUED	58	57	339	242	2%	40%
WARNINGS ISSUED	35	31	322	173	13%	86%
Physical Arrests	2	0	11	11	N/C	0%
City Warrants Served	5	0	24	14	N/C	71%
County Warrants Served	0	0	0	0	N/C	N/C
Euthanized	74	68	503	540	9%	-7%
Euthanized for Humane Society	0	0	0	71	N/C	-100%
Deceased Animals Landfill lbs.	3,660	3,960	33,600	38,380	-8%	-12%
Wildlife Euthanized	55	41	288	184	34%	57%
Sent to Rescue Centers	18	5	123	82	260%	50%
Adoptions	39	38	294	187	3%	57%
Miles Driven	7,824	10,793	66,401	79,530	-28%	-17%

Fleet Maintenance

The Fleet Maintenance is responsible for all of the police vehicle maintenance upkeep, cleanliness, and purchasing. In addition, this Division handles most of the purchasing of equipment, supplies, and uniforms for all of the Police Department.

Repair Costs by Model Year	This Month	This Month Last Year	YTD	Last YTD	Change By Month	Change YTD
95-99	\$0.00	\$0.00	\$583.68	\$1,155.90	N/C	-50%
2000	\$0.00	\$981.05	\$280.46	\$2,234.67	-100%	-87%
2001	\$0.00	\$0.00	\$312.03	\$427.80	N/C	-27%
2002	\$0.00	\$0.00	\$2,054.11	\$0.00	N/C	N/C
2003	\$500.00	\$0.00	\$577.11	\$535.11	N/C	8%
2004	\$477.64	\$306.81	\$7,637.17	\$5,224.56	56%	46%
2005	\$0.00	\$1,419.23	\$8,189.85	\$5,010.88	-100%	63%
2006	\$4,577.37	\$3,258.07	\$27,623.60	\$12,415.79	40%	122%
2007	\$2,114.42	\$841.91	\$9,464.66	\$3,573.07	151%	165%
2008	\$0.00	\$22.46	\$1,397.19	\$192.21	-100%	627%
2009	\$11.23	\$0.00	\$952.23	\$6,137.91	N/C	N/C
2010	\$0.00	n/a	\$0.00	n/a	N/C	N/C
TOTALS	\$7,680.66	\$6,829.53	\$59,072.09	\$36,907.90	12%	60%

Routine Preventative Maintenance by Model Year	This Month	This Month Last Year	YTD	Last YTD	Change By Month	Change YTD
95-99	\$0.00	\$0.00	\$53.50	\$188.30	N/C	-72%
2000	\$0.00	\$0.00	\$29.00	\$224.30	N/C	-87%
2001	\$0.00	\$0.00	\$60.00	\$1,221.96	N/C	-95%
2002	\$52.50	\$0.00	\$72.50	\$0.00	N/C	N/C
2003	\$73.50	\$40.00	\$925.15	\$913.50	84%	1%
2004	\$138.00	\$121.75	\$3,500.55	\$3,763.92	13%	-7%
2005	\$457.50	\$971.61	\$3,823.68	\$4,782.66	-53%	-20%
2006	\$2,148.02	\$1,455.61	\$11,379.89	\$11,211.22	48%	2%
2007	\$1,153.22	\$1,717.90	\$8,745.39	\$7,005.57	-33%	25%
2008	\$0.00	\$60.00	\$1,988.77	\$1,070.54	-100%	86%
2009	\$120.00	\$40.00	\$1,075.25	\$2,337.99	N/C	N/C
2010	\$0.00	n/a	\$1,168.10	n/a	N/C	N/C
TOTALS	\$4,142.74	\$4,406.87	\$32,821.78	\$32,719.96	-6%	0%

Records

The Records Division is responsible for providing administrative and clerical support to the department. Major responsibilities include entering the accident and incident reports and tickets into the records database management system, assisting the general public for report requests, performing criminal backgrounds, serving as a switchboard at times, performing validations, and setting up and managing the payment plans out of court.

RECORDS	This Month	This Month Last Year	YTD	Last YTD	Change By Month	Change YTD
Incident/Arrest Reports Processed	1,365	1,256	9,987	8,393	9%	19%
Accident Reports Processed	191	207	1,809	1,767	-8%	2%
Citations Processed	4,509	3,794	33,074	27,765	19%	19%
Warnings Processed	605	301	4,745	2,526	101%	88%
Backgrounds	17	27	153	72	-37%	113%
Fingerprints	79	84	671	770	-6%	-13%
Photos	2	2	15	20	0%	-25%
Accident Requests	118	119	845	944	-1%	-10%
Accident Requests Online	168	149	1,272	1,245	13%	2%
TOTALS	7,054	5,939	52,571	43,502	19%	21%

Professional Standards

The Office of Professional Standards, a unit within Administration, is charged with the compilation and updating of an extensive set of policies and procedures and providing a general operations guideline and code of conduct for officers to follow. In the event that a member of the public does experience a negative interaction with an officer, mechanisms are in place for them to lodge a complaint. All complaints are reviewed and investigations completed in a timely manner.

	This Month	This Month Last Year	YTD	Last YTD	Change By Month	Change YTD
Opened (TOTAL)	5	5	47	66	0%	-29%
Closed	5	5	47	66	0%	-29%
Inquiries	5	4	43	61	25%	-30%
Formal Investigations	0	1	2	5	-100%	-60%
Sustained	3	3	35	45	0%	-22%
Not-Sustained	0	1	3	5	-100%	-40%
Exhonerated	1	1	2	7	0%	-71%
Unfounded	1	0	4	9	N/C	-56%