

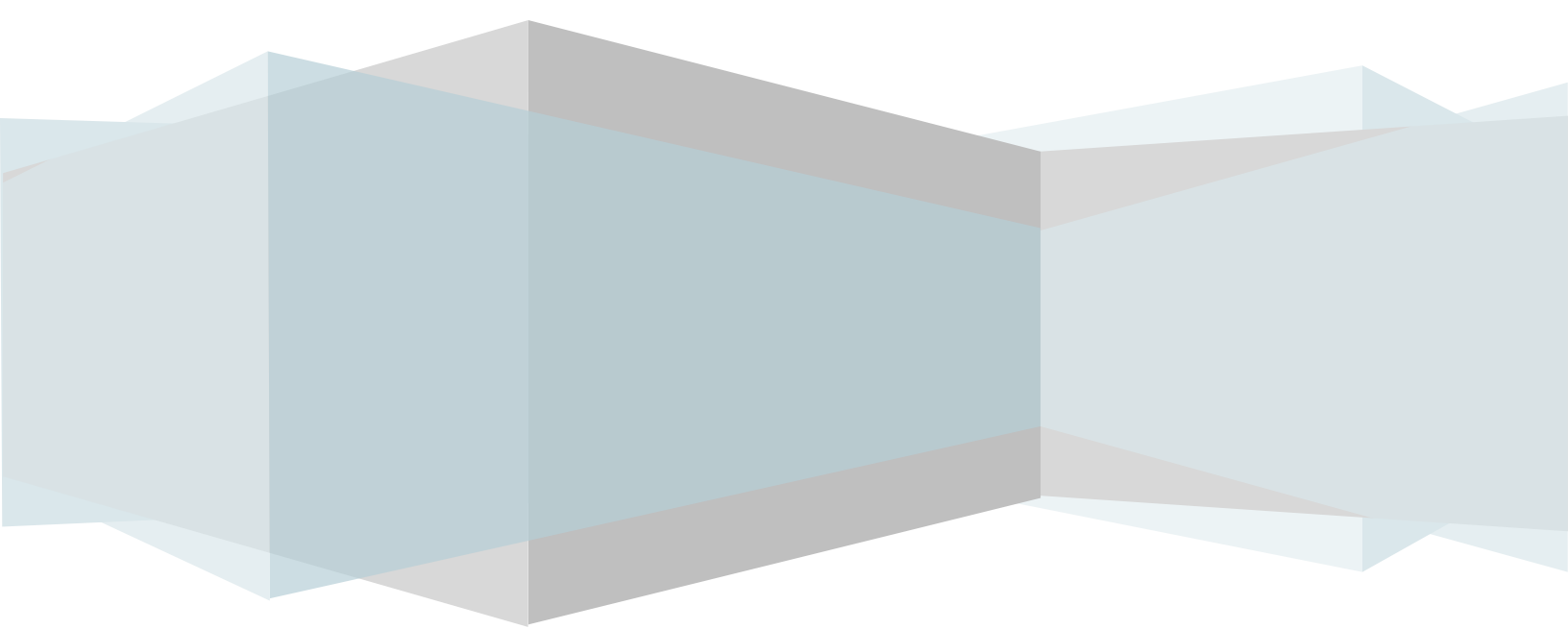
Jonesboro Police Department



Monthly Report

December 2011

Basia Combs, Crime Analyst



EXECUTIVE SUMMARY

The purpose of the Jonesboro Police Department Monthly Report is to compile data into one integrated report for review, allowing for a seamless flow of information for better decision-making. After each department collates their monthly numbers and sends it to the Office of Crime Analysis, it is organized into sections of departmental data, analyzed and packaged, and finally disseminated to department heads, the Chief of Police, the City Mayor, and the City Council. Major sections include Crime Analysis, Emergency 911, Uniform Police Division, Prowl, Criminal Investigative Division, Warrants, Drug Task Force, Traffic, Parking Enforcement, Animal Control, Fleet Maintenance, Records, and Professional Standards.

CRIME ANALYSIS

The Crime Analysis division consists of one Crime Analyst and one part-time Crime Analyst Assistant. The Crime Analyst position is responsible for the analysis and dissemination of crime activity data and the collection and maintenance of crime intelligence information for the city of Jonesboro. Additionally, the Crime Analyst is charged with providing the department with current and accurate crime maps, presenting crime activity data to audiences of interest, and responding to requests for crime data from civilians and

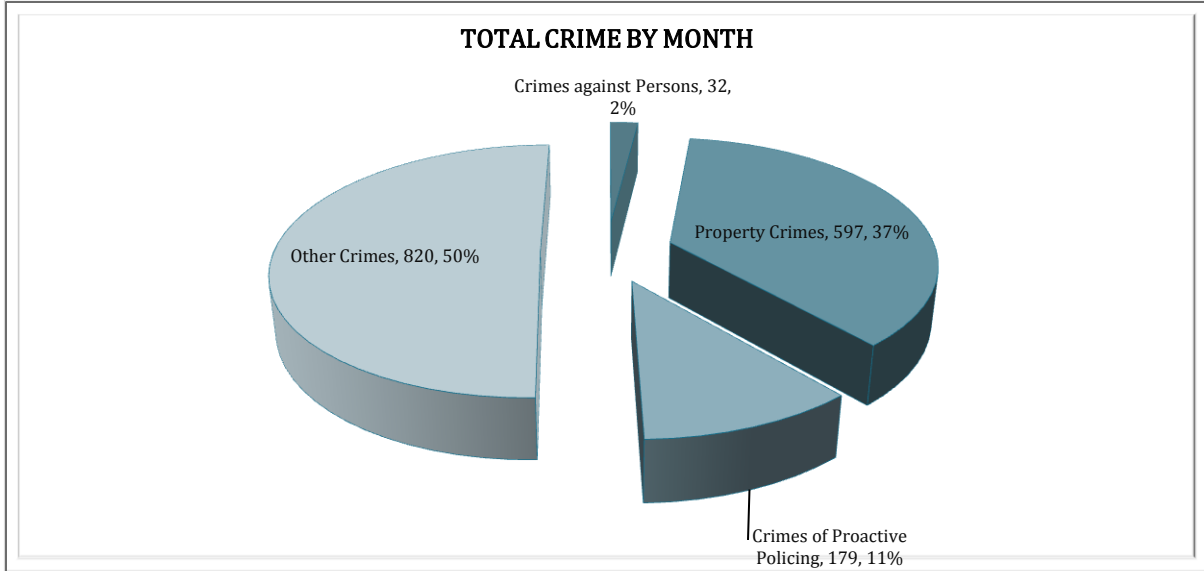
departmental staff. Data exported from this division is used by field agents for more effective, efficient policing, administration for improved staffing decisions, and the Mayor's office for community decision making and enhanced public relations. The following section is broken down into Total Crime, Crimes against Persons, Property Crimes, Crimes of Proactive Policing, Other Crimes, Arrest Demographics, Total Crime Monthly Comparison, and Next Month Predictions.

TOTAL CRIME

The crime activity for the month of December 2011 is at a total of 1,628 offenses, a 22% increase, comparing to a total of 1,330 offenses in December last year. With Jonesboro population equal to 67,263, the crime rate is at 24 crimes per 1,000 population for the month of December this year, compared to the rate of 20 crimes per 1,000 population last year, a 17% increase*. As indicated on a

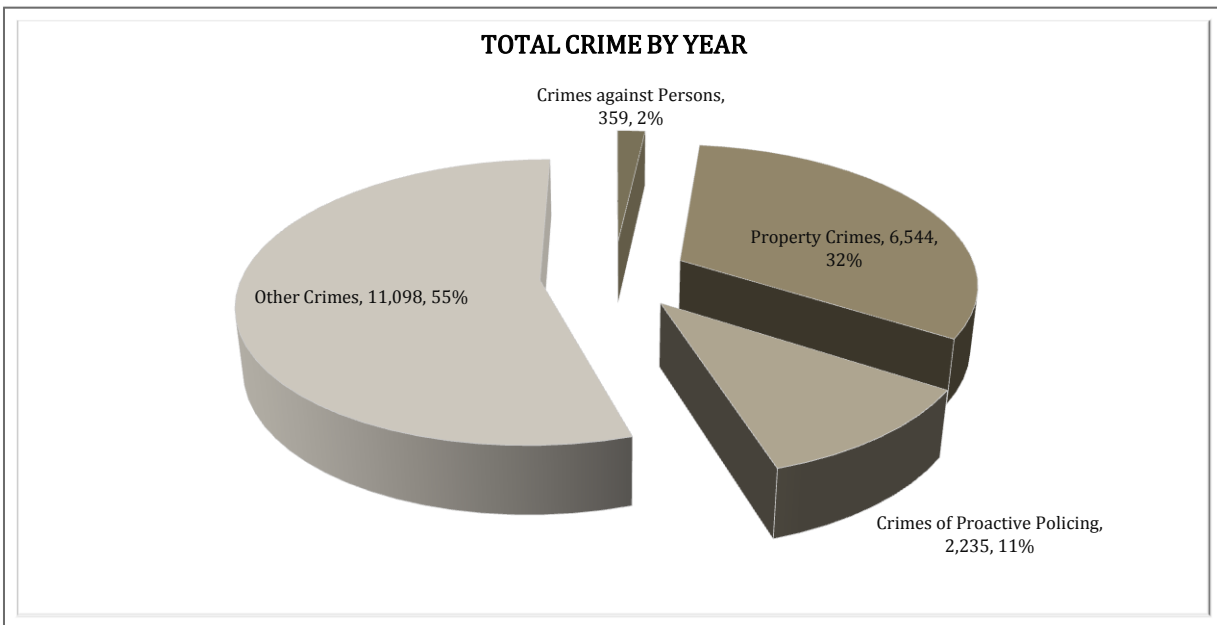
pie chart on the following page, Other Crimes absorb the majority, 50%, of this month's crime activity ($n = 820$). Property crimes fall into a second place and comprise of 37% of all the crimes ($n = 597$). Following in third and fourth places are crimes of proactive policing at 11% ($n = 179$) and crimes against persons at 2% ($n = 32$), respectively.

* Note: 2010 numbers are based on 2010 population estimate, $n = 64,374$.



Year to date data includes number of crimes from January through December in 2011. A total of 20,236 offenses were reported in 2011, up from 18,935 offenses that occurred January through December of last year, a 7% increase. The year to date crime rate is 301 crimes per 1,000 population, a 2% increase from last

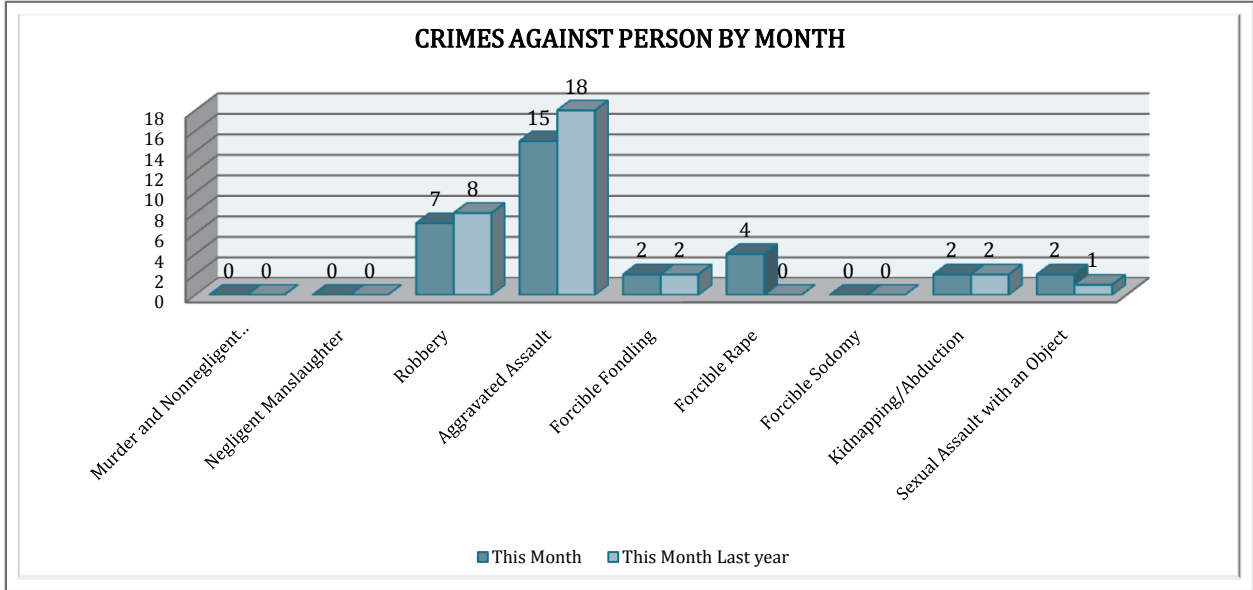
year's to date crime rate. Other Crimes have the highest percentage of total crimes and are at 55% ($n = 11,098$). Property Crimes comprise of 32% of total crimes to date, where $n = 6,544$. Crimes of Proactive Policing amount to 11% ($n = 2,235$) and crimes against persons comprise of 2% of total year to date number of crimes ($n = 359$).



CRIMES AGAINST PERSONS

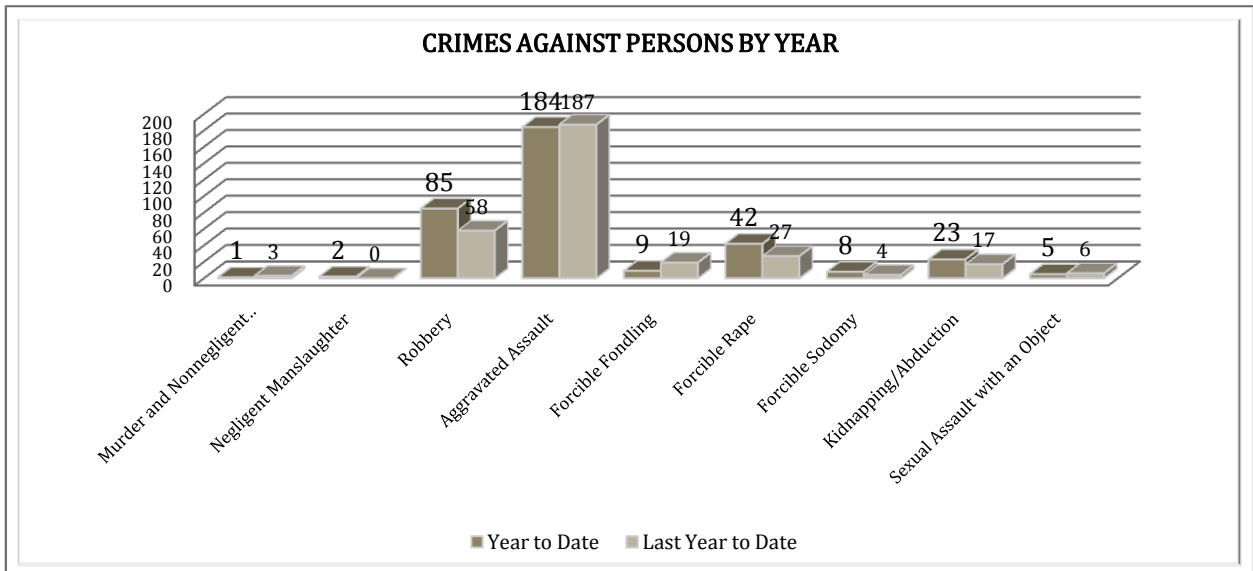
There are 9 crimes that make up this section. There were a total of 32 offenses in this area this month, statistically insignificant 3% increase, comparing to the last year's total in December. Robberies and Aggravated Assault are

slightly lower, comparing to the last year's data for the month of December. As demonstrated on the following chart, there are no significant changes in other crimes for this category.



Bellows bar graph shows the year to date data for Crimes against Persons, which amounts to a total of 359 incidents for this category of crimes, a 12% increase,

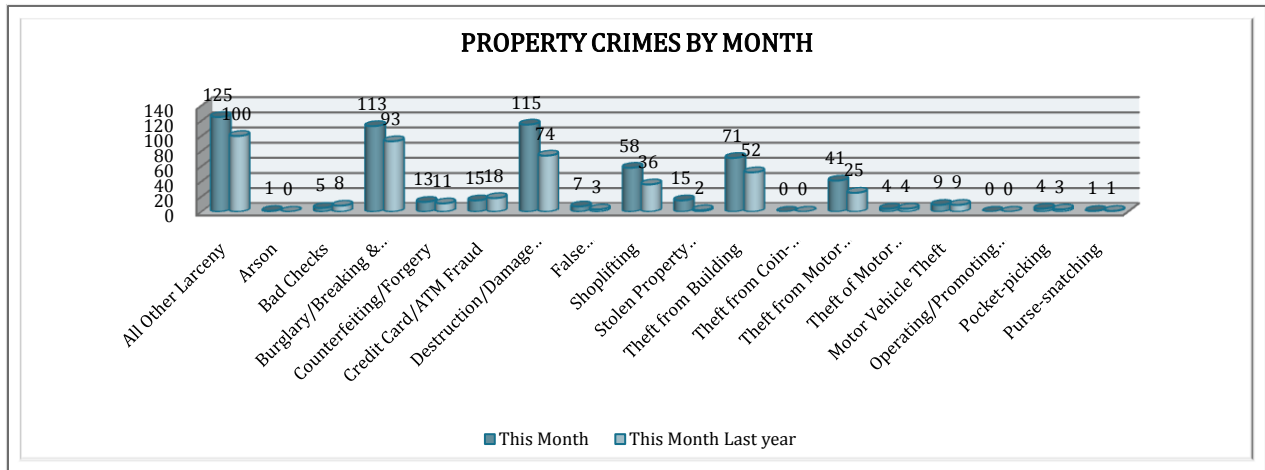
comparing to the year to date data of last year. Robberies increased by 47% and Forcible Rape by 56%.



PROPERTY CRIMES

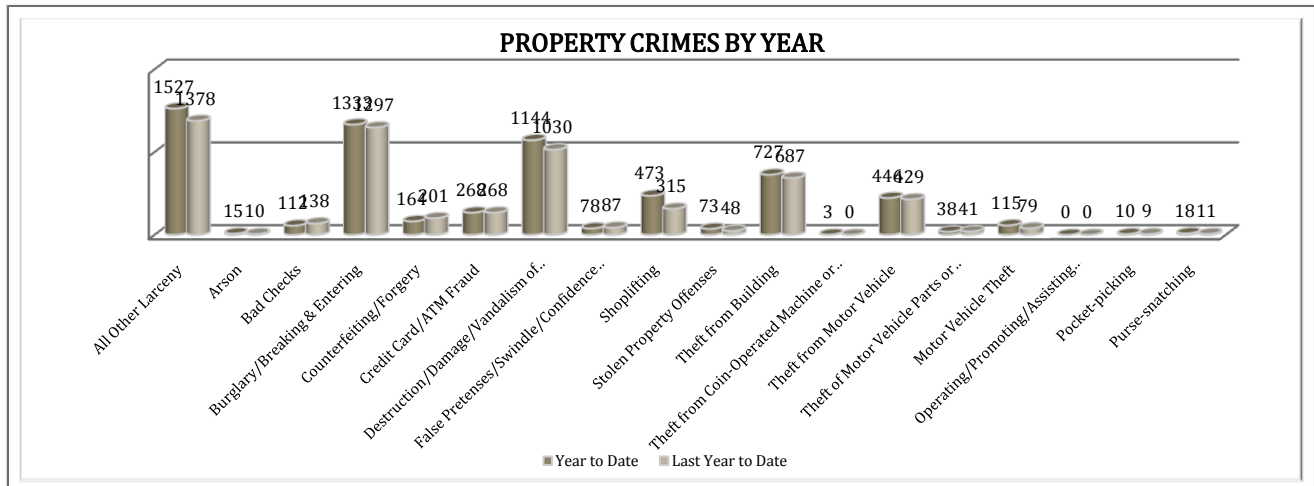
This section displays the criminal activity for 18 crimes, all against property. This month, there were a total of 597 Property Crimes, a 36% increase comparing to December of the last year. The data indicates a significant change in All Other Larceny (up 25%), Burglary/Breaking and Entering (up 22%),

Destruction/Damage/Vandalism (up 55%), Shoplifting (up 61%), Stolen Property Offenses (up 650%), Theft from Building (up 37%), and Theft from Motor Vehicle (up 64%). Another significant change can be noted in a decrease of Bad Checks offenses (down 38%).



To date this year, 6,544 property offenses have occurred, a 9% increase, comparing to the last year's data at this same time, where total equaled 6,028. The following significant changes are noted this year: All Other Larceny (up 11%), Destruction/Damage/Vandalism (up 11%), Shoplifting (up 50%), Stolen Property

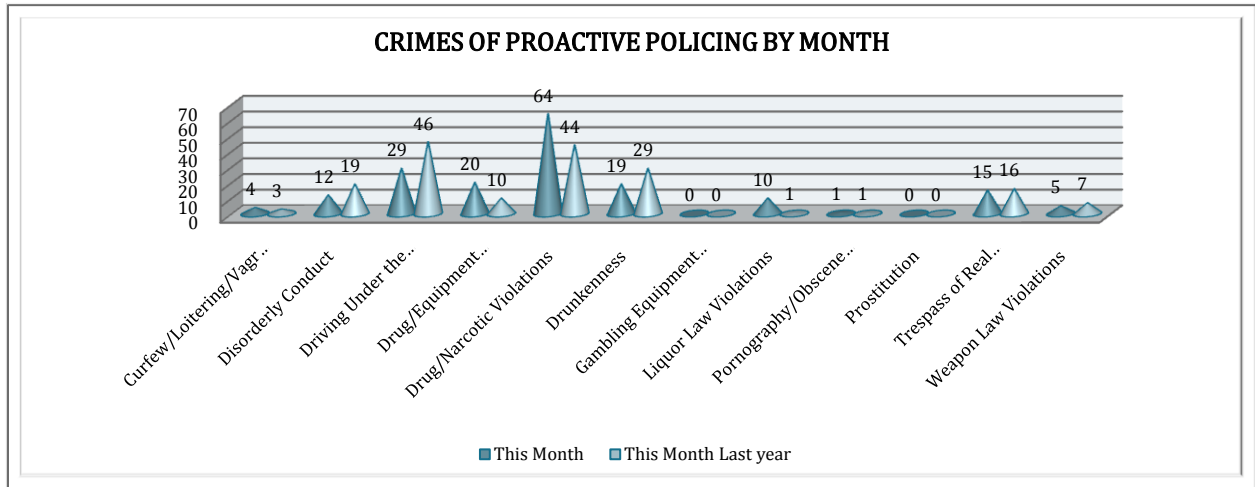
Offenses (up 52%), Theft from Building (up 6%), and Motor Vehicle Theft (up 46%). The following offenses decreased significantly: Bad Checks (down 19%), Counterfeiting/Forgery (down 18%), False Pretenses/Swindle/Confidence Game (down 10%), and Theft of Motor Vehicle Parts or Accessories (down 7%).



CRIMES OF PROACTIVE POLICING

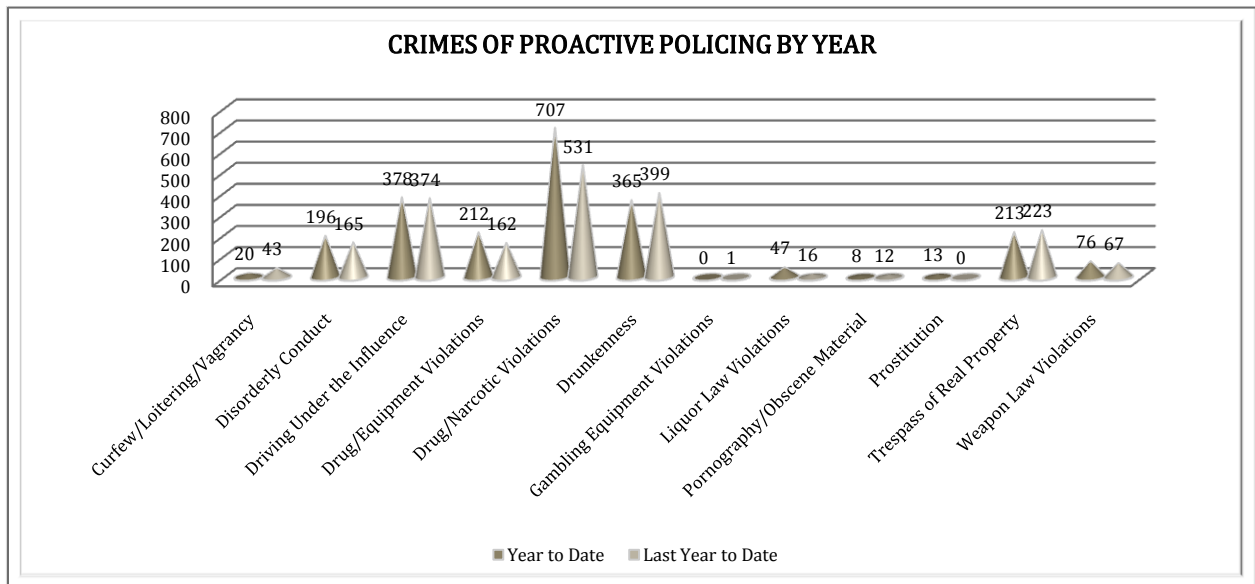
Crimes of Proactive Policing are those crimes that result from police officers actively policing the streets to combat certain types of street crime. As chart below indicates, twelve crimes fall under this category. A total of 179 offenses have occurred this month, a 2% increase,

comparing to December last year. There is an evident increase in Drug/Equipment Violations (up 100%), Drug/Narcotic Violations (up 45%), and Liquor Law Violations increased by 9 offenses. Driving under Influence decreased by 37% and Drunkenness decreased by 34%.



To date for the year 2011, there have been 2,235 crimes of proactive policing reported, 12% increase, comparing to the last year's to date data. The following significant changes are noted this year: Disorderly conduct is up 19%, Drug/Equipment Violations are up

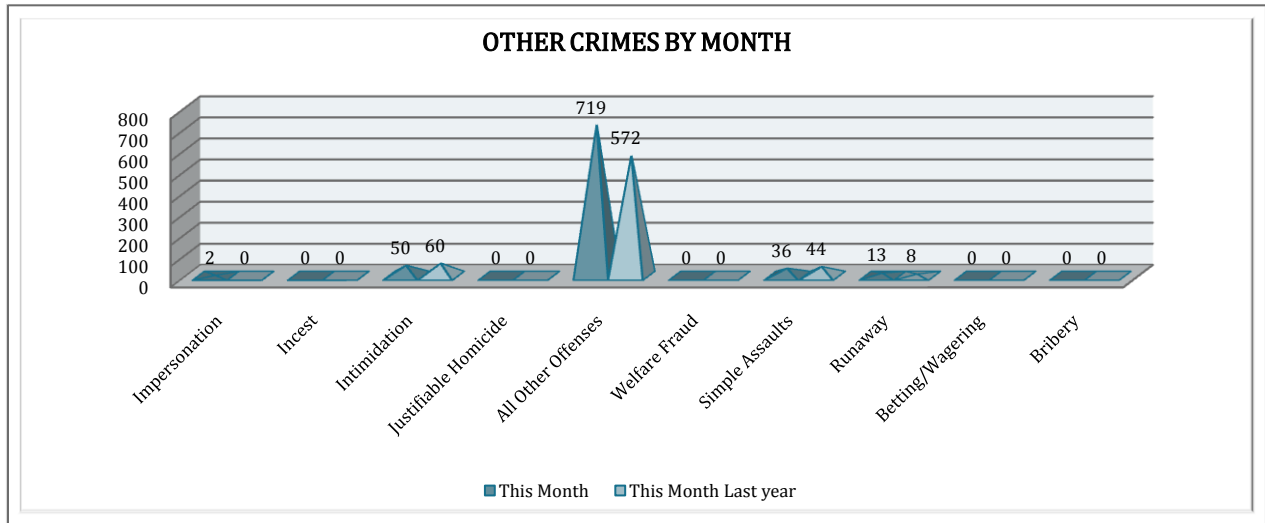
31%, Drug/Narcotic Violations are up 33%, Liquor Law Violations are up 194%, and Weapon Law Violations are up 13%. Curfew/Loitering/Vagrancy show 53% decrease and Drunkenness show 9% decrease this year.



OTHER CRIMES

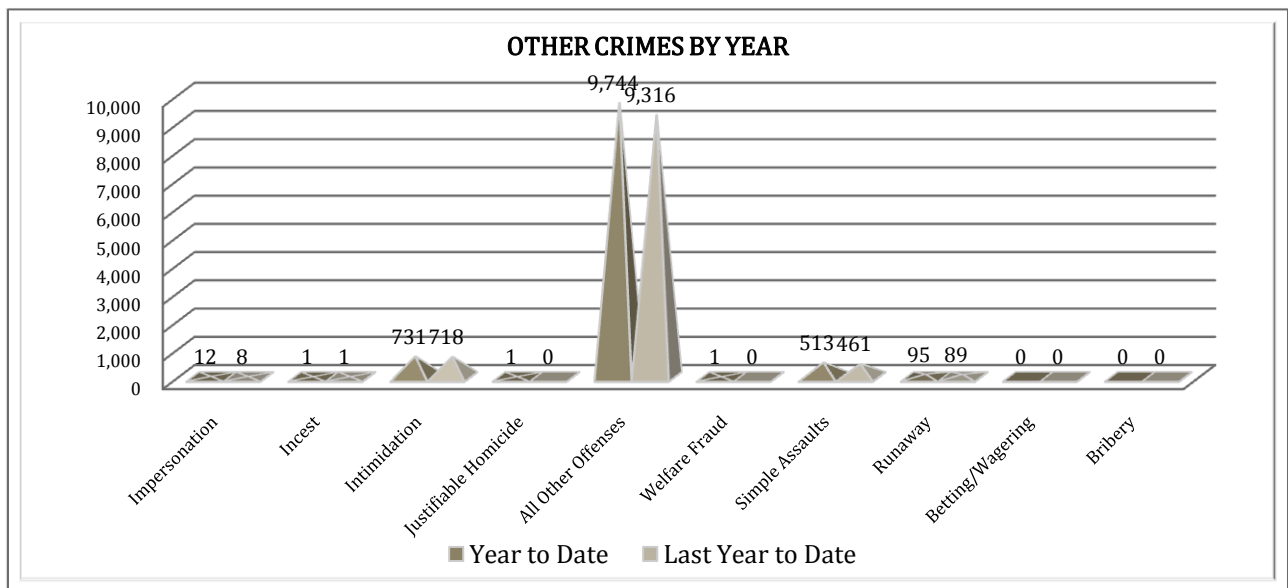
There are 10 crimes that fall into the Other Crimes category. This month, there have been a total of 820 Other Crimes, a 20% increase, comparing to last December (n = 684). All Other Offenses

within Other Crimes category increased by 26%, while Intimidation decreased by 17% and Simple Assaults decreased by 18%.



To date this year, there have been 11,098 Other Crimes offenses, up from 10,593 as of last year's to date offenses, a 5% increase. A notable change occurs for Simple Assaults, an 11% increase. All Other

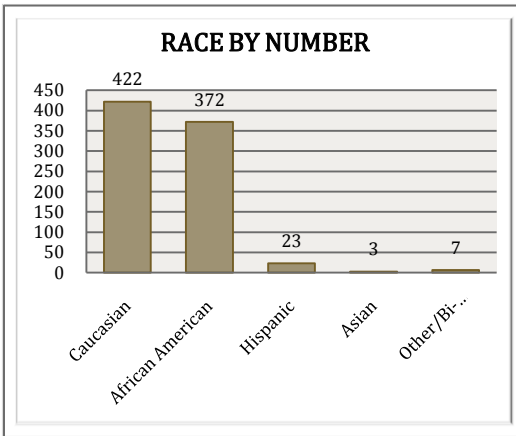
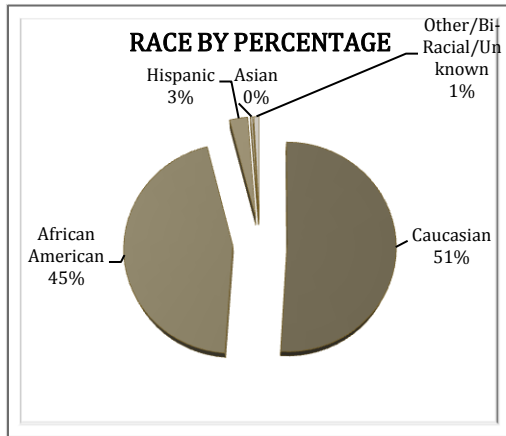
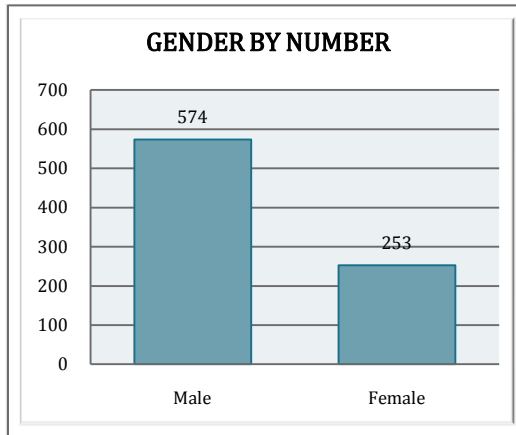
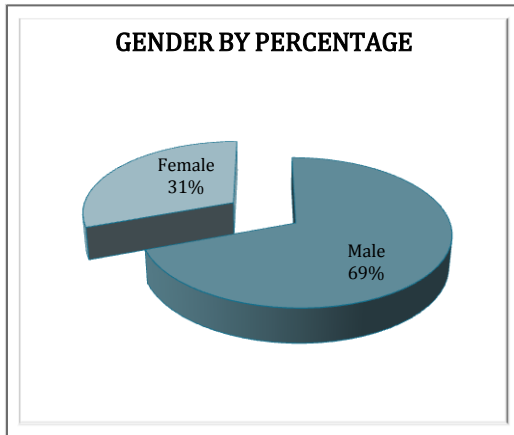
Offenses are slightly higher this year (up 2%). No statistically significant changes have been observed for other offenses within this category, comparing to the last year's data.



ARREST DEMOGRAPHICS

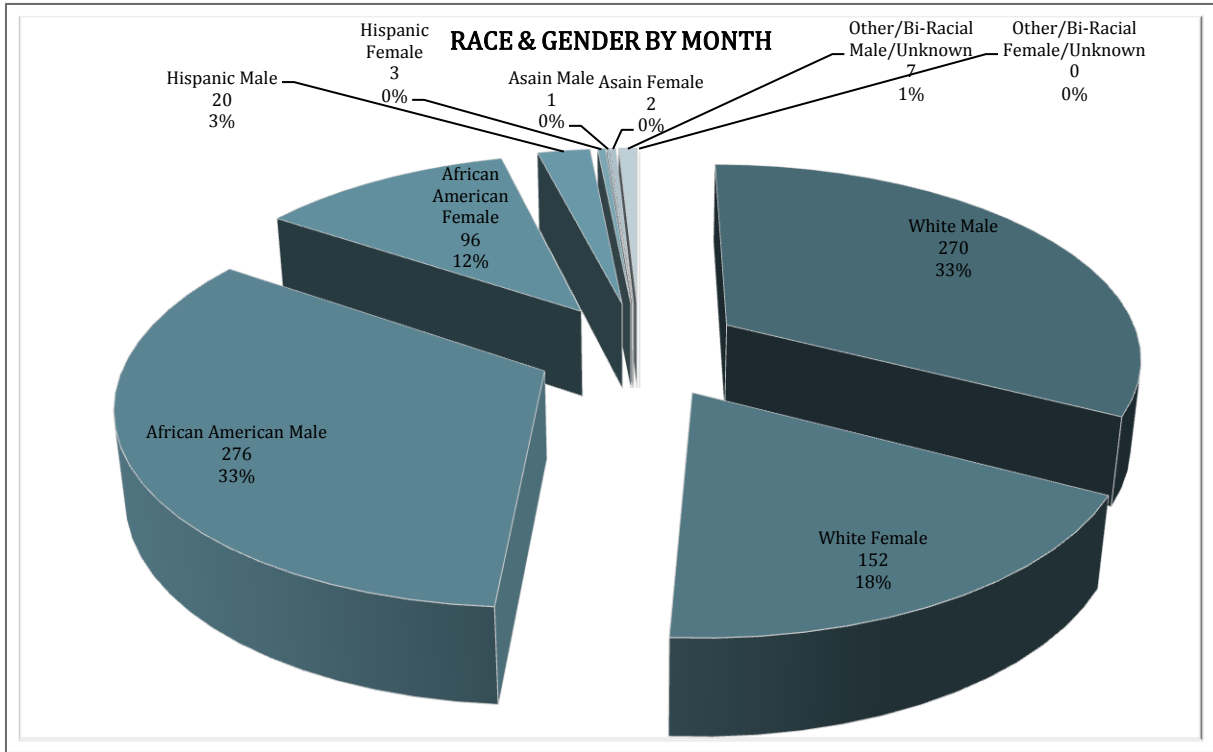
In December, there were a total of 827 arrests. Comparing with the last year's data for the month of December, there was a 27% increase in arrests; that is 51 arrests per 100 crimes in December of this year, comparing to 49 arrests per 100 crimes last year, a 4% increase.

This section breaks down this month's arrests by race and gender. The majority of offenders have been male ($n = 574$), as opposed to female ($n = 253$) and Caucasian ($n = 422$) and African American ($n = 372$) as opposed to Hispanic ($n = 23$), Asian ($n = 3$), or other/unknown/bi-racial ($n = 7$).

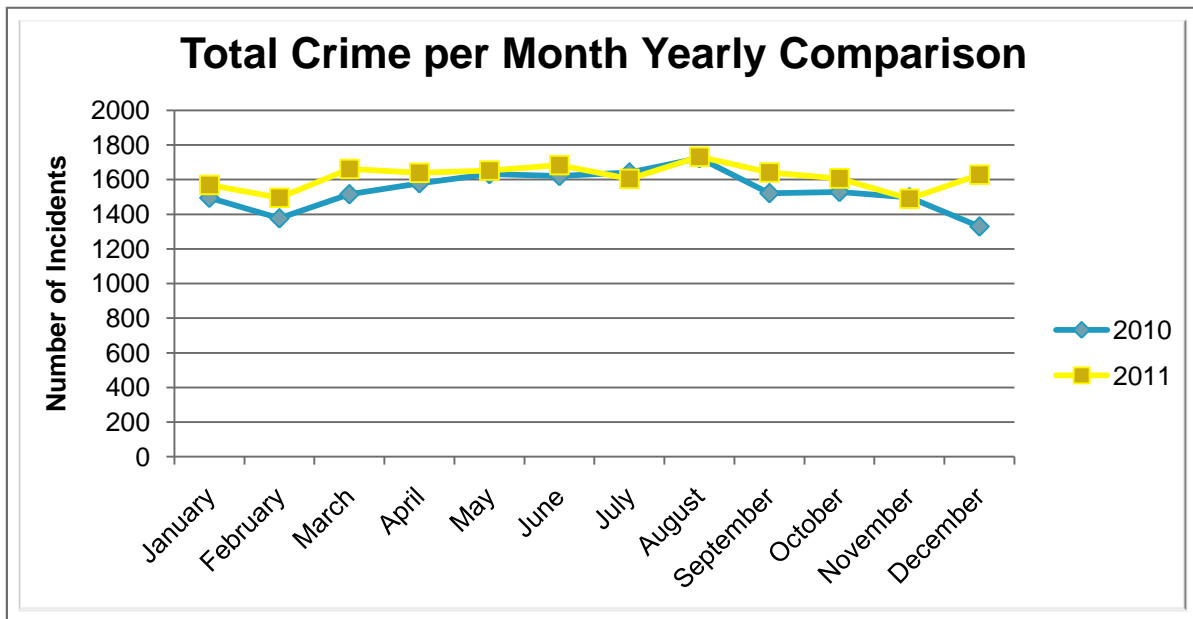


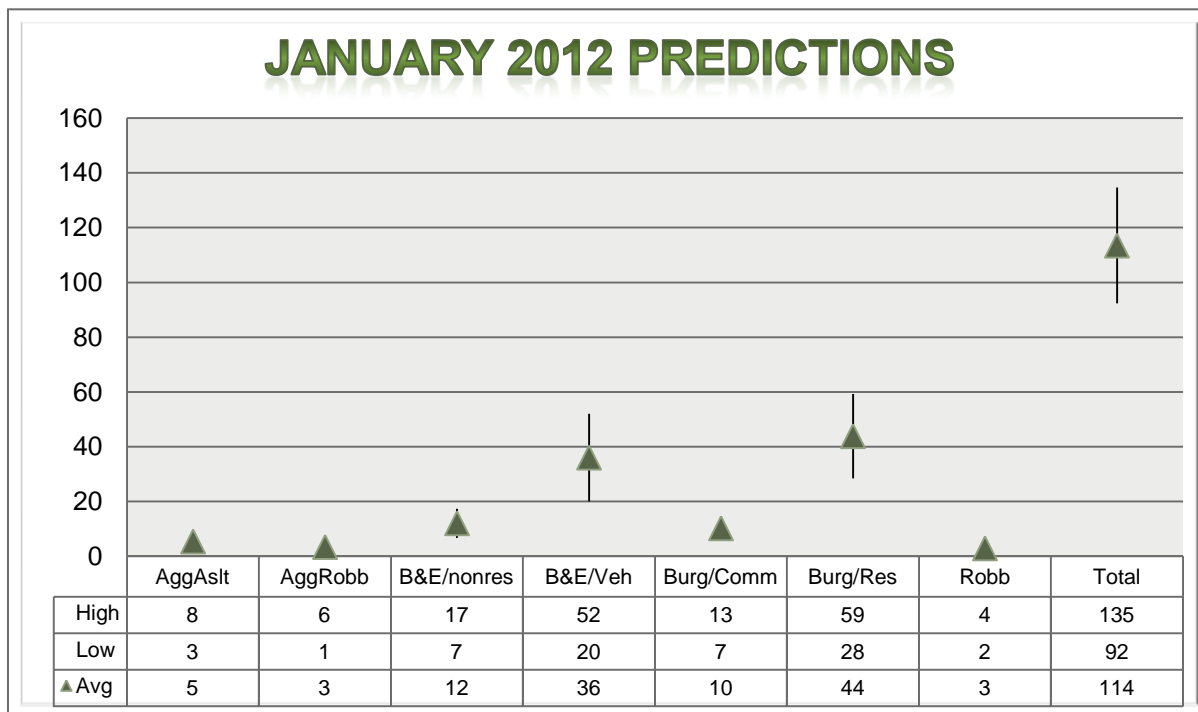
African American males make up the majority, 33.4%, of arrestees this month ($n = 276$). Caucasian males make up 32.6% of arrestees for the month of December ($n = 270$). Caucasian females make up 18% ($n = 152$) and African American females make up 12% ($n = 96$). Hispanic males make up 3% ($n = 20$) and

Other/Biracial Male/Unknown make up 1% ($n = 7$). Hispanic Female, Asian Male, Asian Female, and Other/Biracial Female/Unknown each make an insignificant less than 0% of arrestees this month. This distribution can be reviewed in the pie chart on the following page.



*Note: The 0% labels may represent rounded real percentage values of 0.99 and less.





*Above predictions are based on 6 year January Data of Most Common Offenses; Source: RPS.

EMERGENCY 911

Also known as Public Safety Answering Point (PSAP), the Emergency 911 Division is responsible for answering all calls from public for emergency assistance, accessing the needed information to best assist, and then assigning the most efficient and effective

emergency response. In addition, this division is responsible for setting priority call dispatching to field units including Police, Fire, and EMS. Emergency 911 also maintains all records for radio logs, calls for service, and other emergency service data collections.

Calls by Type	This Month	This Month Last Year	YTD	Last YTD	Change By Month	Change YTD
Land Line E911	843	841	9,108	10,646	0%	-14%
Cell Phone E911	3,866	3,515	43,269	40,323	10%	7%
Admin Lines Non Emergency	15,773	15,266	177,646	186,530	3%	-5%
TOTALS	20,482	19,622	230,023	237,499	4%	-3%

Calls by Agency	This Month	This Month Last Year	YTD	Last YTD	Change By Month	Change YTD
Jonesboro PD Calls	6,928	5,409	74,368	72,593	28%	2%
Craighead Cty Sheriff	1,324	1,003	13,720	12,699	32%	8%
Jonesboro Fire Dpt - dispatch	176	169	2,065	2,014	4%	3%
Jonesboro Fire Dpt - Med Asst	117	95	1,186	1,361	23%	-13%
Craighead Cty - Fire	37	47	587	903	-21%	-35%
Craighead Cty - 1st Responder	115	42	1,068	902	174%	18%
Emerson Ambulance	273	196	3,203	2,883	39%	11%
Medic One	296	333	3,274	3,551	-11%	-8%
Air Evac	0	0	10	12	N/C	-17%
Coroner	2	2	24	31	0%	-23%
ARK State Police	24	21	168	191	14%	-12%
Jonesboro Animal Control	0	45	154	812	-100%	-81%
Wreckers Called	173	168	1,628	2,032	3%	-20%
TOTALS	9,465	7,530	101,455	99,984	26%	1%

Calls by Municipality	This Month	This Month Last Year	YTD	Last YTD	Change By Month	Change YTD
Bay PD	155	37	1228	1117	319%	10%
Bono PD	266	167	2076	2374	59%	-13%
Brookland PD	139	141	1653	2289	-1%	-28%
Caraway PD	79	72	1055	1154	10%	-9%
Cash PD	12	24	716	583	-50%	23%
Egypt PD	5	12	111	264	-58%	-58%
Lake City PD	90	71	1194	1400	27%	-15%
Monette PD	218	126	1735	1671	73%	4%
TOTALS	964	650	9,768	10,852	48%	-10%

UNIFORM PATROL DIVISION

The UPD is responsible for responding to calls into the Emergency - 911 Division by civilians and are normally the first responders. Jonesboro is divided into 6 patrol districts. Officers from UPD are assigned to a

district and work the same district every shift. In addition, when a Traffic Officer is not available, a UPD Officer will respond to traffic accidents and assist in directing traffic when necessary.

Incidents	This Month	This Month Last Year	YTD	Last YTD	Change By Month	Change YTD
Calls for Service	6,937	5,370	81,218	71,594	29%	13%
Complaints / Calls	4,166	3,896	49,687	45,633	7%	9%
Assists	1,234	1,085	14,050	12,809	14%	10%
Incident Reports	1,003	840	11,682	11,178	19%	5%
Street Accidents	104	131	987	1,268	-21%	-22%
Private Property Accidents	44	39	534	563	13%	-5%
Traffic Stops	2,440	1,426	24,614	22,380	71%	10%
Traffic Citations	804	538	8,140	8,285	49%	-2%
DWI	36	42	313	265	-14%	18%
Mis. Arrests	478	315	6,138	4,967	52%	24%
Felony Arrests	88	48	1,227	925	83%	33%
Warrants Served	1,476	724	17,834	13,059	104%	37%
Alarms	330	247	3,996	2,731	34%	46%
Written Warnings	1076	601	8,776	7,698		
TOTALS	20,216	15,302	229,196	203,355	32%	13%
Hours Worked	11,646	9,965	119,437	118,617	17%	1%

PROWL

The Prowl unit is a uniformed street crimes unit specializing in criminal patrol, narcotics enforcement, gang investigation, and prostitution activity. The unit conducts directed patrols, investigates citizen complaints of street-level criminal activity,

and directly assists the 2nd Judicial Drug Task Force. PROWL also assists any division within the Jonesboro Police Department at any time when needed. (See following page for details).

Incidents	This Month	This Month Last Year	YTD	Last YTD	Change By Month	Change YTD
Street Accidents	0	0	0	0	N/C	N/C
Private Property Accidents	0	0	0	1	N/C	-100%
Traffic Citations	16	20	333	363	-20%	-8%
DWI	0	0	1	1	N/C	0%
Mis. Arrests	64	90	1,169	1,099	-29%	6%
Felony Arrests	27	33	287	336	-18%	-15%
Drug Arrests	18	35	284	339	-49%	-16%
Public Intoxication Arrests	0	0	2	0	N/C	N/C
Calls For Service	67	85	1,019	1,095	-21%	-7%
Alarms	0	0	0	0	N/C	N/C
Parking Citations	0	0	0	0	N/C	N/C
Written Warnings	7	12	486	267	-42%	82%
Assists	0	0	0	0	N/C	N/C
TOTALS	199	275	3,581	3,501	-28%	2%
Value of Drugs Seized	\$1,848	\$4,000	\$71,958	\$78,268	-54%	-8%
Value of Assets Seized	350	0	52,680	66,160	N/C	-20%
Patrol Miles	4,950	4,600	63,120	60,800	8%	4%

CRIMINAL INVESTIGATIVE DIVISION

The CID is responsible for conducting follow-up investigations into criminal acts reported to the Jonesboro Police Department. The primary goal is to collect and present evidence that conclusively leads to a

successful arrest. Additionally, CID is charged with clearing additional crimes, recovering stolen property, preventing additional crimes, and gathering intelligence information.

Investigations	This Month	This Month Last Year	YTD	Last YTD	Change By Month	Change YTD
Criminal Investigations Assigned	68	71	989	1048	-4%	-6%
Criminal Investigations Closed	56	74	797	965	-24%	-17%
Cleared by Arrests	38	42	571	577	-10%	-1%
Unfounded	8	11	77	103	-27%	-25%
Exceptionally Cleared	5	12	94	161	-58%	-42%
Filed With Prosecutors Office	5	7	43	76	-29%	-43%
TOTALS	180	217	2571	2930	-17%	-12%
Crimes Against Persons	This Month	This Month Last Year	YTD	Last YTD	Change By Month	Change YTD
Criminal Investigations Assigned	19	20	238	225	-5%	6%
Criminal Investigations Closed	18	24	232	241	-25%	-4%
Cleared by Arrests	10	15	169	142	-33%	19%
Unfounded	2	3	18	15	-33%	20%
Exceptionally Cleared	3	4	32	49	-25%	-35%
Filed With Prosecutors Office	3	2	17	17	50%	0%
TOTALS	55	68	706	689	-19%	2%
Property Crimes	This Month	This Month Last Year	YTD	Last YTD	Change By Month	Change YTD
Criminal Investigations Assigned	47	44	693	736	7%	-6%
Criminal Investigations Closed	33	39	492	603	-15%	-18%
Cleared by Arrests	27	24	376	377	13%	0%
Unfounded	4	5	50	70	-20%	-29%
Exceptionally Cleared	2	8	68	110	-75%	-38%
Filed With Prosecutors Office	0	2	16	46	-100%	-65%
TOTALS	113	122	1695	1942	-7%	-13%

Crimes Against Children	This Month	This Month Last Year	YTD	Last YTD	Change By Month	Change YTD
Criminal Investigations Assigned	2	5	27	64	-60%	-58%
Criminal Investigations Closed	2	9	39	79	-78%	-51%
Cleared by Arrests	1	3	15	35	-67%	-57%
Unfounded	1	3	15	22	-67%	-32%
Exceptionally Cleared	0	0	1	7	N/C	-86%
Filed With Prosecutors Office	2	3	3	7	-33%	-57%
TOTALS	8	23	100	214	-65%	-53%
Miscellaneous Investigations Assigned	0		26		N/C	N/C
Miscellaneous Investigations Cleared	0		37		N/C	N/C

WARRANTS

The Warrants Division is responsible for serving warrants, criminal summonses, and subpoenas that are issued by the District Court. On city court days, the Warrants Division provides a bailiff for court and a transport officer. In addition, this Division is

responsible for transporting wanted persons arrested in other jurisdictions back to Jonesboro. The STEP program operates within this division and is a grant-funded operation in which officers can get paid overtime to enforce the safety belt law.

Arrests	This Month	This Month Last Year	YTD	Last YTD	Change By Month	Change YTD
Misdemeanor	1054	978	9952	9551	8%	4%
Felony	2	0	10	4	N/C	150%
Total Arrests	1056	978	9962	9555	8%	4%
Warrants by Activity	This Month	This Month Last Year	YTD	Last YTD	Change By Month	Change YTD
Subpoenas	343	415	3331	3170	-17%	5%
Commitments	0	1	8	22	-100%	-64%
Traffic Citations	0	0	10	13	N/C	-23%
Complaints	0	0	5	0	N/C	N/C
Assist	0	0	0	0	N/C	N/C
Alarms	0	0	0	0	N/C	N/C
Hours by Activity	This Month	This Month Last Year	YTD	Last YTD	Change By Month	Change YTD
SI Criminal	178.75	193.5	2683.25	2699.88	-8%	-1%
Court	92.5	132.5	1541.25	1576.08	-30%	-2%
Prisoner Transport	29	29.5	317	335.18	-2%	-5%
Hours Worked	This Month	This Month Last Year	YTD	Last YTD	Change By Month	Change YTD
Regular Hours Worked	501	572	7334	7045.5	-12%	4%
Overtime Hours Worked	4.5	3	92.75	64	50%	45%
TOTAL Hours Worked	505.5	575	7426.8	7109.5	-12%	4%
Mileage	This Month	This Month Last Year	YTD	Last YTD	Change By Month	Change YTD
Total Mileage	2302	2295	30575	35197	0%	-13%
STEP	This Month	This Month Last Year	YTD	Last YTD	Change By Month	Change YTD
DWI Arrest	2	1	12	7	100%	71%
DUI Arrest	0	0	0	0	N/C	N/C
Traffic Citations	98	70	1792	1321	40%	36%
Felony Arrests	0	0	1	2	N/C	-50%
Drug Arrests	0	0	0	1	N/C	-100%
STEP TOTALS	100	71	1805	1331	41%	36%
STEP Hours Worked	99	55	1055.5	1280	80%	-18%
STEP Miles Driven	545	479	8378	9345	14%	-10%

DRUG TASK FORCE

The DTF is responsible for investigating major drug traffickers in the area, including all types of illegal drugs. They work closely

with local, state, and federal agencies to eradicate drugs from the community.

INVESTIGATIONS	This Month	This Month Last Year	YTD	Last YTD	Change By Month	Change YTD
Opened	26	16	283	314	63%	-10%
Closed	24	18	275	274	33%	0%
TOTAL	50	34	558	588	47%	-5%
With Nexus to Jonesboro	This Month	This Month Last Year	YTD	Last YTD	Change By Month	Change YTD
Opened	26	18	292	283	44%	3%
Closed				0	N/C	N/C
TOTAL	26	18	292	283	44%	3%
Outside Jonesboro (No Known Nexus)	This Month	This Month Last Year	YTD	Last YTD	Change By Month	Change YTD
Opened	0	0	13	17	N/C	-24%
Closed	0	0		0	N/C	N/C
TOTAL	0	0	13	17	N/C	-24%
ASSISTANCE RENDERED	This Month	This Month Last Year	YTD	Last YTD	Change By Month	Change YTD
Assist to Outside Agencies	0	1	18	31	-100%	-42%
Assist to Jonesboro UPD/CID	21	15	168	178	40%	-6%
ARRESTS	This Month	This Month Last Year	YTD	Last YTD	Change By Month	Change YTD
Miscellaneous	23	3	116	62	667%	87%
Felony	51	23	388	400	122%	-3%
Marijuana	7	1	89	76	600%	17%
Cocaine	3	1	24	21	200%	14%
Crack Cocaine	1	0	29	42	N/C	-31%
Methamphetamine/ICE	8	6	113	97	33%	16%
LSD	0	0	0	0	N/C	N/C
Ecstasy (MDMA or Other Designer Drug)	1	0	1	5	N/C	-80%
Prescription	6	1	28	19	500%	47%
Opiates (Heroin,Opium)	0	0	1	0	N/C	N/C
Labs	0	1	16	27	-100%	-41%
All Other Drug Offenses	0	0	0	0	N/C	N/C
ASSET FORFEITURE	This Month	This Month Last Year	YTD	Last YTD	Change By Month	Change YTD
Vehicles Seized(No.)	0	0	2	5	N/C	-60%
Value of Assets Seized(Includes Value of vehicles)	\$6,669	\$100	\$69,898	\$56,257	6569%	24%
Asset Value Awarded to Jonesboro PD (State)		\$0	\$0	\$0	N/C	N/C
Asset Value Awarded to Jonesboro PD (Federal)		\$0	\$0	\$0	N/C	N/C
Asset Value Awarded to Jonesboro PD (Total)		\$0	\$0	\$0	N/C	N/C
ARRESTS DEMOGRAPHICS	This Month	This Month Last Year	YTD	Last YTD	Change By Month	Change YTD
White	21	12	206	156	75%	32%
African American	12	3	108	80	300%	35%
Latino	0	0	10	29	N/C	-66%
Asian	0	0	1	1	N/C	0%
Other/Bi-Racial	0	0	1	0	N/C	N/C
Male	23	13	232	203	77%	14%
Female	10	2	91	49	400%	86%
White Male	13	10	130	118	30%	10%
White Female	8	2	73	41	300%	78%
African American Male	10	3	89	77	233%	16%
African American Female	2	0	16	5	N/C	220%
Latino Male	0	0	10	24	N/C	-58%
Latino Female	0	0	0	3	N/C	-100%
Asian Male	0	0	0	1	N/C	-100%
Asian Female	0	0	0	0	N/C	N/C
Other/Bi-Racial Male	0	0	0	0	N/C	N/C
Other/Bi-Racial Female	0	0	0	0	N/C	N/C

TRAFFIC

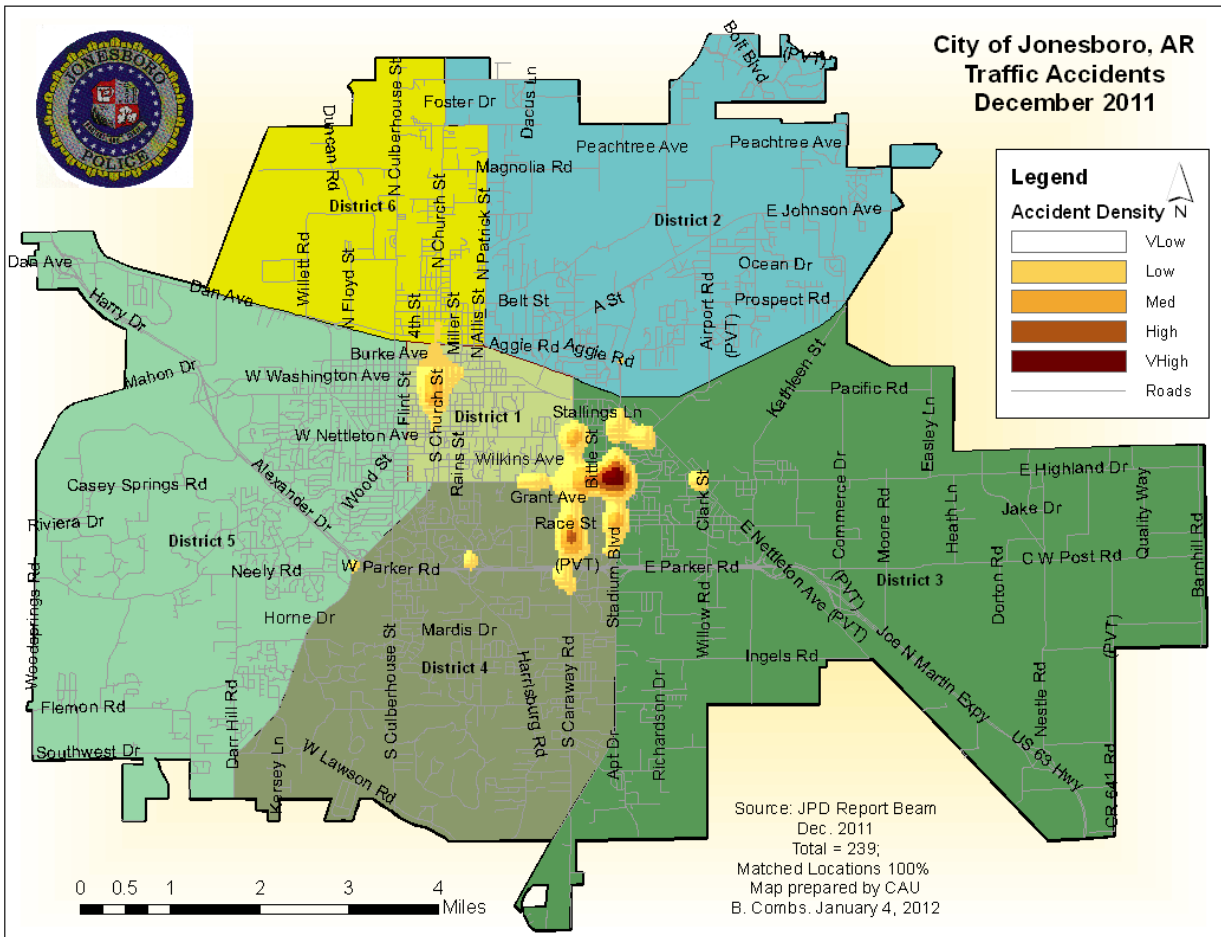
Comprised of three motor units and three Chargers, the Traffic Enforcement Unit

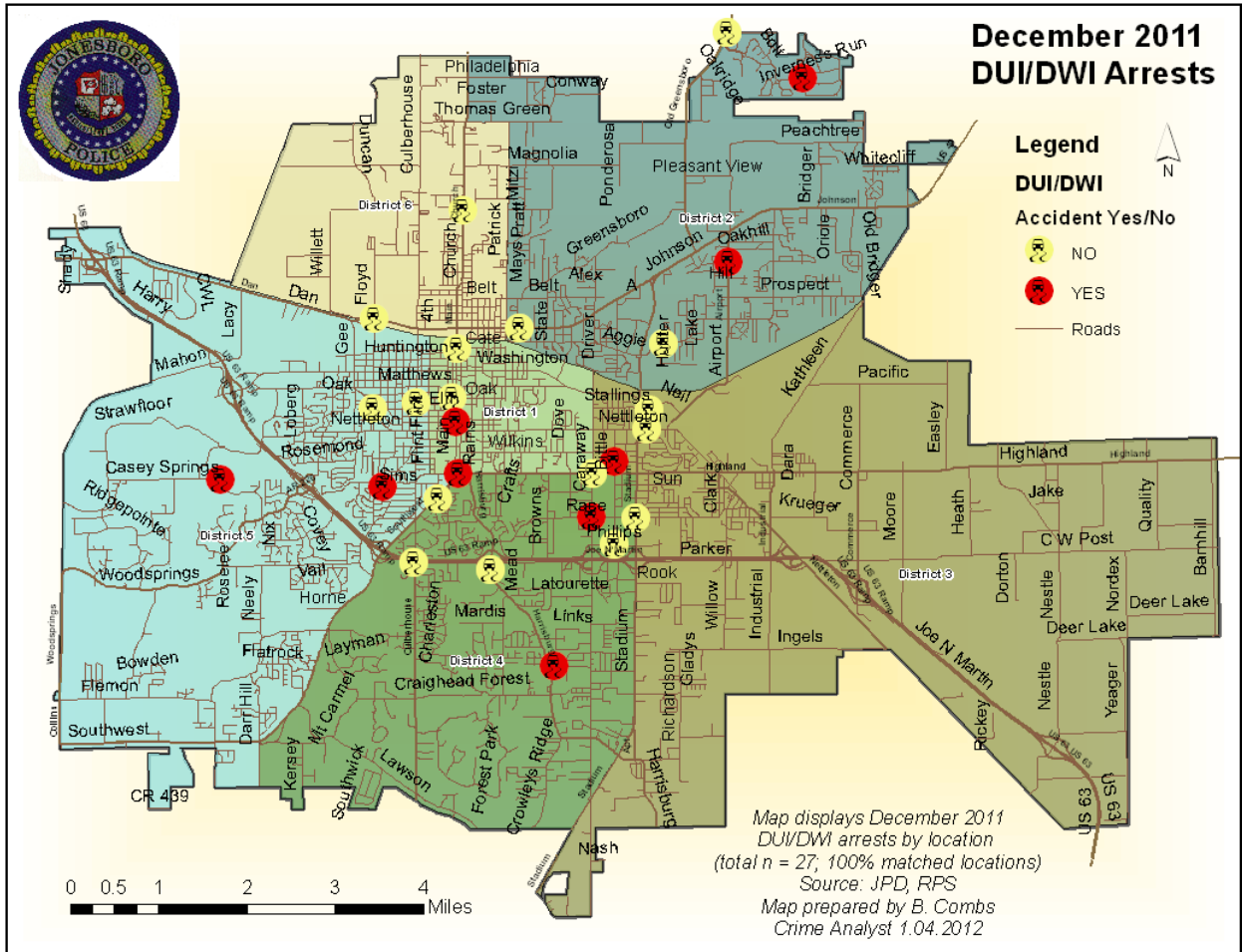
responds to traffic accidents and provides increased enforcement in particularly

challenging areas. This unit also provides extra coverage for specific congestion problems and special events in the

community. Last, they work details targeting specific issues, such as DWI enforcement and traffic safety checkpoints.

Incidents	This Month	This Month Last Year	YTD	Last YTD	Change By Month	Change YTD
Street Accidents	161	142	1634	1578	13%	4%
Private Property Accidents	47	43	483	443	9%	9%
Traffic Citations	148	120	2068	2646	23%	-22%
DWI	0	7	39	37	-100%	5%
Mis. Arrests	1	29	171	252	-97%	-32%
Felony Arrests	1	0	18	38	N/C	-53%
Drug Arrests	0	0	0	0	N/C	N/C
Public Intoxication Arrests	0	0	2	2	N/C	0%
Calls For Service	220	294	3309	3232	-25%	2%
Alarms	0	0	14	20	N/C	-30%
Parking Citations	0	0	0	0	N/C	N/C
Written Warnings	38	118	791	1327	-68%	-40%
TOTALS	616	753	8529	9575	-18%	-11%
Value of Asstes Seized	\$0	\$0	\$0	\$0	N/C	N/C
Patrol Miles	5,509	5,092	58,363	62,641	8%	-7%
Hours Worked	780	787	9370.5	9272.5	-1%	1%





PARKING ENFORCEMENT

The Parking Enforcement Division is responsible for enforcing parking laws in the downtown area. This service provides a safe

and convenient parking situation for the public.

CITATIONS ISSUED	This Month	This Month Last Year	YTD	Last YTD	Change By Month	Change YTD
Citations	58	51	375	570	14%	-34%
Written Warnings						
Verbal Warnings	8	0	0	0	N/C	N/C
MINUTES BY ACTIVITY	This Month	This Month Last Year	YTD	Last YTD	Change By Month	Change YTD
Office	70	500	10,685	10,855	-86%	-2%
Admin(Non-Office)	2,155	585	10,495	10,065	268%	4%
Community	0	0	0	0	N/C	N/C
Training	180	0	115	0	N/C	N/C
Patrol	5,455	5,755	43,560	47,440	-5%	-8%

ANIMAL CONTROL

The Animal Control Division is responsible for educating the public on safe and humane

issues regarding animal treatment, enforcing all animal laws and ordinances, assisting the

public in resolving animal issues, and protecting the safety and welfare of the citizens and animals in this community.

Incidents	This Month	This Month Last Year	YTD	Last YTD	Change By Month	Change YTD
Barking Complaints	4	8	125	105	-50%	19%
Bite Reports	9	5	126	106	80%	19%
Door Hangers	23	20	422	273	15%	55%
Welfare Checks	46	54	1,240	887	-15%	40%
Advised of Rights	639	288	8,130	3,153	122%	158%
Incident Reports	23	1	84	51	2200%	65%
Gone on Arrival	12	22	370	478	-45%	-23%
Complaints	411	523	7,513	7,136	-21%	5%
Desk Complaints	1,535	867	18,129	10,310	77%	76%
Captured Dogs	118	96	1,596	1,417	23%	13%
Captured Cats	14	4	253	124	250%	104%
Captured Wildlife	2	6	295	311	-67%	-5%
Chemical Captures	0	4	24	74	-100%	-68%
Traps	14	6	188	208	133%	-10%
Deceased Animals	37	47	663	799	-21%	-17%
Assist J.P.D.	3	3	121	75	0%	61%
Assist C.S.O.	0	1	17	3	-100%	467%
Public Relations	958	425	9,918	5,955	125%	67%
CITATIONS ISSUED	52	75	1,196	60	-31%	1893%
WARNINGS ISSUED	58	27	747	467	115%	60%
Physical Arrests	0	1	67	11	-100%	509%
City Warrants Served	0	6	284	35	-100%	711%
County Warrants Served	0	0	50	1	N/C	4900%
Felony Bench Warrants	0	0	10	0	N/C	N/C
Euthanized	58	35	933	667	66%	40%
Deceased Animals Landfill lbs.	2,240	3,020	44,720	43,610	-26%	3%
Wildlife Euthanized	2	6	302	311	-67%	-3%
Sent to Rescue Centers	16	2	50	124	700%	-60%
Adoptions	76	39	557	397	95%	40%
Miles Driven	6,150	8,869	83,003	91,129	-31%	-9%

FLEET MAINTENANCE

The Fleet Maintenance is responsible for all of the police vehicle maintenance upkeep, cleanliness, and purchasing. In addition, this Division handles most of the purchasing of

equipment, supplies, and uniforms for all of the Police Department. (See the following page for details).

Repair Costs by Model Year	This Month	This Month Last Year	YTD	Last YTD	Change By Month	Change YTD
95-99	\$0.00	\$0.00	\$0.00	\$583.68	N/C	-100%
2000	\$0.00	\$0.00	\$292.92	\$550.38	N/C	-47%
2001	\$0.00	\$0.00	\$1,082.20	\$323.26	N/C	235%
2002	\$0.00	\$0.00	\$405.65	\$2,054.11	N/C	-80%
2003	\$0.00	\$223.25	\$90.00	\$800.36	-100%	-89%
2004	\$176.12	\$928.37	\$1,829.78	\$10,267.50	-81%	-82%
2005	\$182.83	\$5,659.52	\$9,850.11	\$16,465.12	-97%	-40%
2006	\$2,730.09	\$897.77	\$37,535.77	\$37,203.04	204%	1%
2007	\$1,604.59	\$302.56	\$18,332.96	\$13,407.44	430%	37%
2008	\$732.13	\$662.00	\$3,378.13	\$2,070.42	11%	63%
2009	\$371.63	\$60.26	\$1,859.09	\$1,062.68	N/C	N/C
2010	\$0.00	\$0.00	\$433.45	\$311.95	N/C	N/C
2011	\$23.22	n/a	\$833.77	n/a	N/C	N/C
Totals by Year Model						
TOTALS	\$5,820.61	\$8,733.73	\$75,923.83	\$85,099.94	-33%	-11%

Routine Preventative Maintenance by Model Year	This Month	This Month Last Year	YTD	Last YTD	Change By Month	Change YTD
95-99	\$0.00	\$75.55	\$78.00	\$149.05	-100%	-48%
2000	\$714.39	\$0.00	\$754.39	\$29.00	N/C	2501%
2001	\$210.35	\$0.00	\$1,230.75	\$110.24	N/C	1016%
2002	\$0.00	\$0.00	\$50.30	\$92.50	N/C	-46%
2003	\$0.00	\$134.00	\$138.00	\$1,119.15	-100%	-88%
2004	\$390.79	\$345.99	\$2,391.59	\$5,923.92	13%	-60%
2005	\$442.64	\$111.85	\$4,593.25	\$7,704.19	296%	-40%
2006	\$1,468.12	\$2,549.03	\$18,962.14	\$21,068.96	-42%	-10%
2007	\$583.20	\$960.26	\$11,482.33	\$14,043.23	-39%	-18%
2008	\$20.00	\$20.00	\$2,725.23	\$2,676.38	0%	2%
2009	\$225.00	\$410.51	\$5,076.17	\$3,449.47	N/C	N/C
2010	\$0.00	\$0.00	\$2,142.69	\$2,022.50	N/C	N/C
2011	\$192.00	n/a	\$692.00	n/a	N/C	N/C
Totals by Year Model						
TOTALS	\$4,246.49	\$4,607.19	\$50,316.84	\$58,388.59	-8%	-14%

RECORDS

The Records Division is responsible for providing administrative and clerical support to the department. Major responsibilities include entering the accident and incident reports and tickets into the records database management system, assisting the general

public for report requests, performing criminal backgrounds, serving as a switchboard at times, performing validations, and setting up and managing the payment plans out of court.

RECORDS	This Month	This Month Last Year	YTD	Last YTD	Change By Month	Change YTD
Incident/Arrest Reports Processed	1,266	1,036	15,775	14,568	22%	8%
Accident Reports Processed	239	265	2,488	2,812	-10%	-12%
Citations Processed	3,729	2,982	52,985	48,358	25%	10%
Warnings Processed	601	410	7,240	6,613	47%	9%
Backgrounds	5	25	212	206	-80%	3%
Fingerprints	74	39	1,080	830	90%	30%
Photos	1	0	19	15	N/C	27%
Accident Requests	169	106	1,342	1,154	59%	16%
Accident Requests Online	7	163	1,486	1,958	-96%	-24%
TOTALS	6,091	5,026	82,627	76,514	21%	8%

PROFESSIONAL STANDARDS

The Office of Professional Standards, a unit within Administration, is charged with the compilation and updating of an extensive set of policies and procedures and providing a general operations guideline and code of conduct for officers to follow. In the event

that a member of the public does experience a negative interaction with an officer, mechanisms are in place for them to lodge a complaint. All complaints are reviewed and investigations completed in a timely manner. (See next page for details)

Professional Standards	This Month	This Month Last Year	YTD	Last YTD	Change By Month	Change YTD
Opened (TOTAL)	3	5	53	70	-40%	-24%
Closed	3	4	50	68	-25%	-26%
Inquiries	3	4	43	65	-25%	-34%
Formal Investigations	0	0	11	3	N/C	267%
Sustained	3	4	41	52	-25%	-21%
Not-Sustained	2	0	6	4	N/C	50%
Exonerated	0	0	2	2	N/C	0%
Unfounded	0	0	6	7	N/C	-14%

*** End of the Report ***
