

# JONESBORO POLICE DEPARTMENT

## Monthly Report

December 2012

Office of Crime Analysis & Criminal Intelligence  
410 W Washington Ave  
Jonesboro, AR 72401  
Basia Combs, Crime Analyst

### IN THIS REPORT

<b>CRIME ANALYSIS .....</b>	<b>1</b>
Total Crime .....	2
Crimes against Person .....	3
Property Crimes .....	4
Crimes of Proactive Policing	5
Other Crimes.....	6
<b>EMERGENCY 911 .....</b>	<b>9</b>
<b>UPD .....</b>	<b>9</b>
<b>PROWL .....</b>	<b>10</b>
<b>CID .....</b>	<b>11</b>
<b>WARRANTS .....</b>	<b>12</b>
<b>DRUG TASK FORCE ....</b>	<b>13</b>
<b>TRAFFIC .....</b>	<b>14</b>
Maps .....	15
<b>PARKING ENFORCEMENT .....</b>	<b>16</b>
<b>ANIMAL CONTROL .....</b>	<b>17</b>
<b>FLEET MAINTENANCE</b>	<b>17</b>
<b>RECORDS .....</b>	<b>18</b>
<b>PROFESSIONAL STANDARDS .....</b>	<b>19</b>

*The purpose of the Jonesboro Police Department Monthly Report is to compile data into one integrated report for review, allowing for a seamless flow of information for better decision-making. After each department collates their monthly numbers and sends it to the Office of Crime Analysis, it is organized into sections of departmental data, analyzed and packaged, and finally disseminated to department heads, the Chief of Police, the City Mayor, and the City Council. Major sections include Crime Analysis, Emergency 911, Uniform Police Division, Prowl, Criminal Investigative Division, Warrants, Drug Task Force, Traffic, Parking Enforcement, Animal Control, Fleet Maintenance, Records, and Professional Standards.*

### **CRIME ANALYSIS**

The Crime Analysis division consists of one Crime Analyst and one part-time Crime Analyst Assistant. The Crime Analyst position is responsible for the analysis and dissemination of crime activity data and the collection and maintenance of crime intelligence information for the city of Jonesboro. Additionally, the Crime Analyst is charged with providing the department with current and accurate crime maps, presenting crime activity data to audiences of interest, and with responding to requests for crime data from civilians and departmental staff. Data exported from this division is used by field agents for more effective, efficient policing, administration for improved staffing decisions, and the Mayor's office for community decision making and enhanced public relations. The following section is broken down into Total Crime, Crimes against Persons, Property Crimes, Crimes of Proactive Policing, Other Crimes, Arrest Demographics, Total Crime Monthly Comparison, and Next Month Predictions.

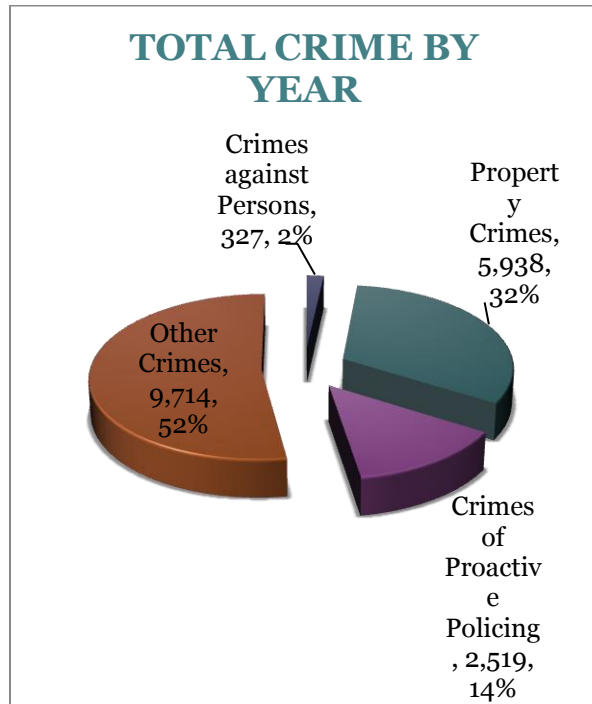
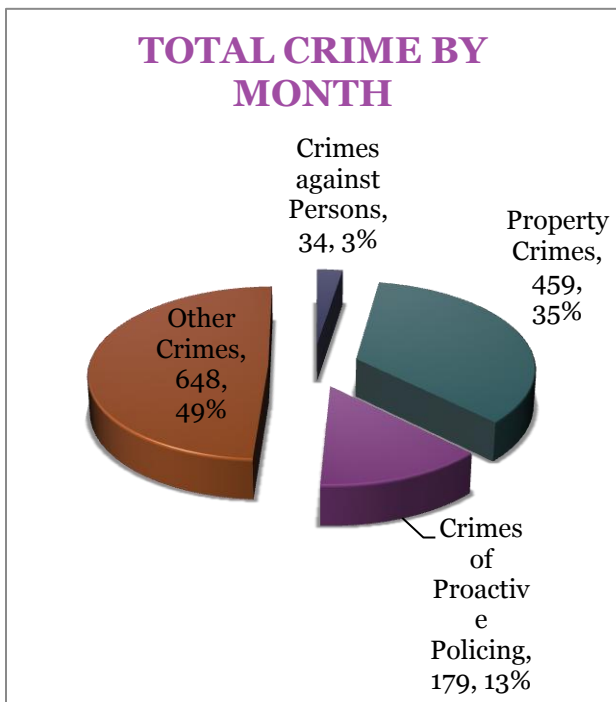
# MONTHLY REPORT DECEMBER 2012

9 January 2013

## TOTAL CRIME

The crime activity for the month of December 2012 was at a total of 1,320 NIBRIS reportable offenses, an 20% decrease, comparing to the total of offenses in December of last year. With Jonesboro population equal to 67,351, the crime rate was at 20 crimes per 1,000 population for the month of December this year, comparing to 25 crimes per 1,000 population last year<sup>1</sup>, an 20% decrease. As indicated on a pie chart below, Other Crimes absorb the majority, 49%, of this month's crime activity ( $n = 648$ ). Property Crimes absorb the majority, 49%, of this month's crime activity ( $n = 648$ ). Property Crimes fall into a second place and comprise of 35% of all the crimes ( $n = 459$ ). Following in third and fourth places are Crime of Proactive Policing, comprising of 13% ( $n = 179$ ) of all the crimes, and Crimes against Persons, comprising of 3% ( $n = 34$ ) of all the crimes this month.

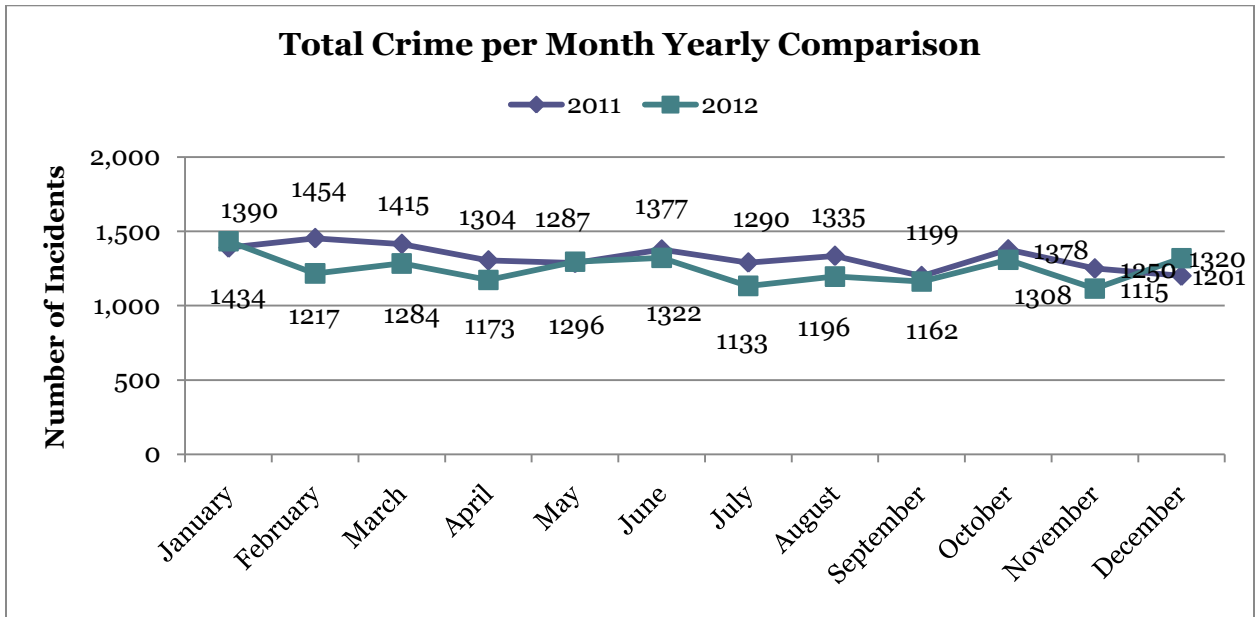
Year to date data includes number of crimes from January through December 2012. A total of 18,498 NIBRIS reportable offenses were reported in 2012, a 9% decrease, comparing to the same period last year. The year to date crime rate amounts to 274 offenses per 1,000 population, compared to 302 offenses per 1,000 population last year (down 9%). A 52% of all the crimes is attributed to Other Crimes category ( $n = 9,714$ ). Property Crimes comprise of 32% of all the crimes to date, where  $n = 5,938$ . Crimes of Proactive Policing amount to 14% ( $n = 2,715$ ) of all the crimes; Crimes against Persons comprise of 2% of a total year to date number of crimes ( $n = 327$ ).



<sup>1</sup> Note: 2011 numbers are based on 2011 population estimate,  $n = 67,263$ .

MONTHLY REPORT DECEMBER 2012

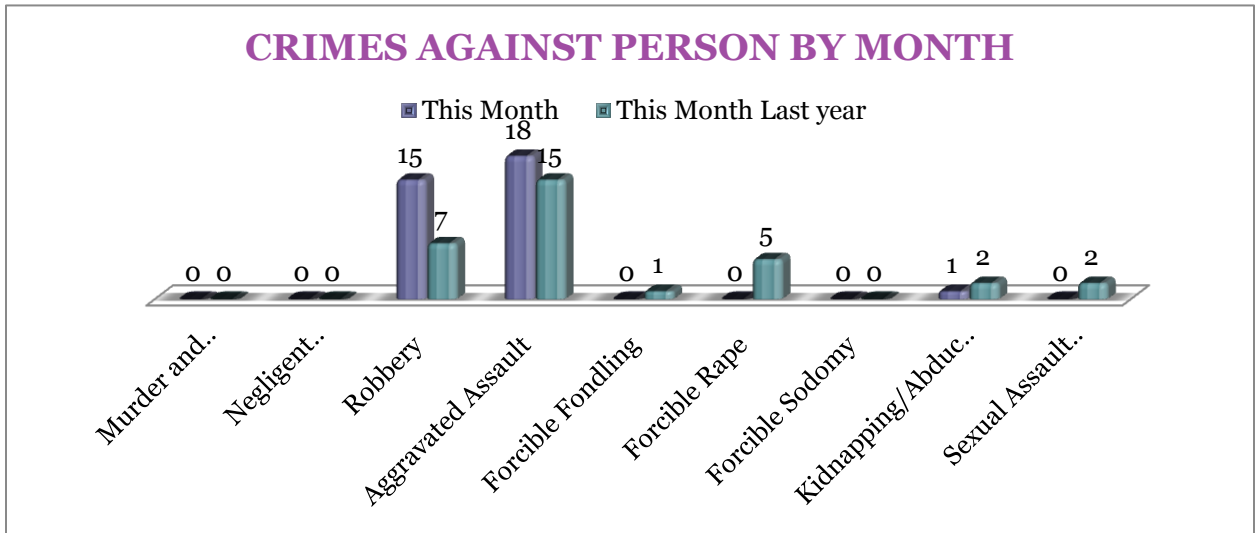
9 January 2013



CRIMES AGAINST PERSONS

There are 9 crimes that make up this section. There were a total of 34 offenses in this area this month, a 6% increase, comparing to the last year's total in December. Aggravated Assaults are up 20%

this month. Robberies have also increased by 8 offenses. Forcible Rape is down 5 offenses. As demonstrated on the bar chart below, there are no significant changes in other crimes for this category.



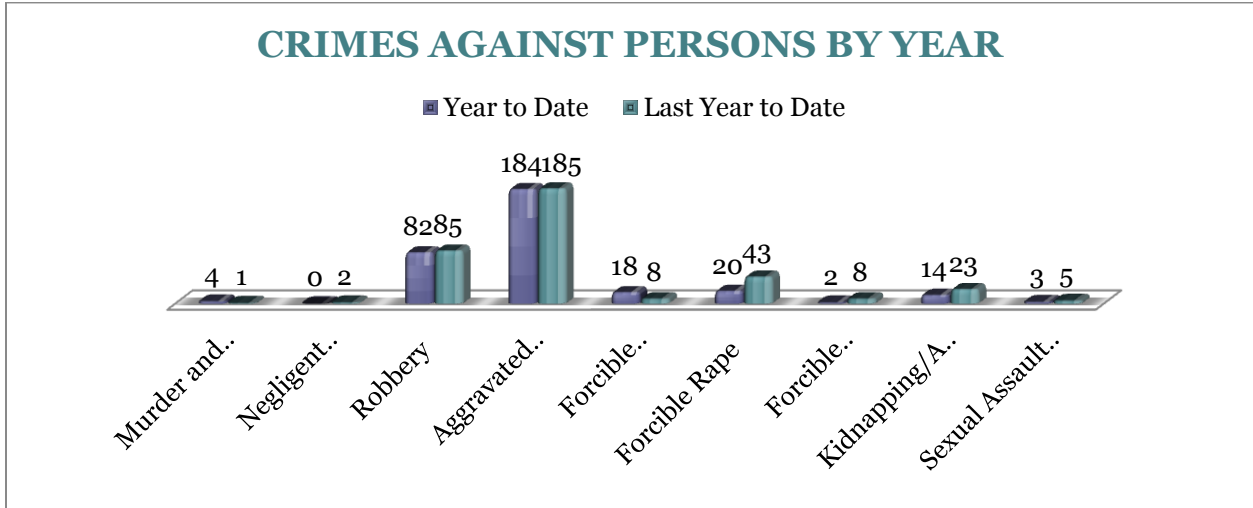
A bar graph on the following page shows the year to date data for Crimes against Persons, which amounts to a total of 327 incidents for this category of crimes, a 9%

decrease, comparing to the year to date data of last year. Kidnappings are down 39%, and forcible rapes are down 53%. Robberies are also down 4%. To date we

MONTHLY REPORT DECEMBER 2012

9 January 2013

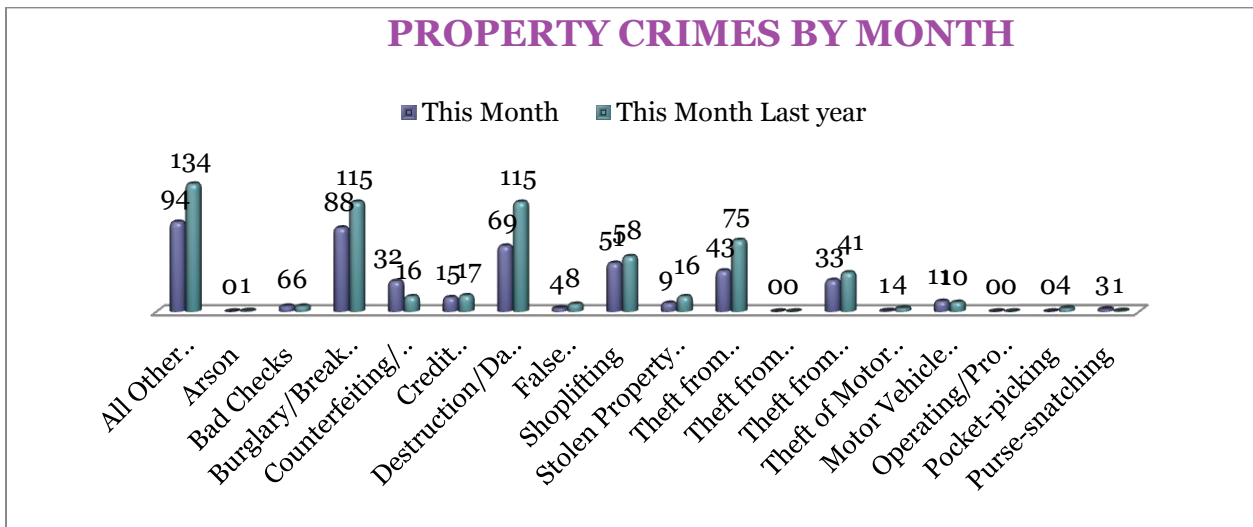
have 3 more murders than last year to date.



PROPERTY CRIMES

This section displays the criminal activity for 18 crimes, all against property. This month, there were a total of 459 Property Crimes, a 26% decrease comparing to December of last year. The data indicates a significant change in Theft from Building

(down 43%), and Destruction / Damage / Vandalism (down 40%). The All Other Larceny is down 30%, Burglary/ Breaking & Entering is down 23%. No other significant changes are noted this month for this crime category.

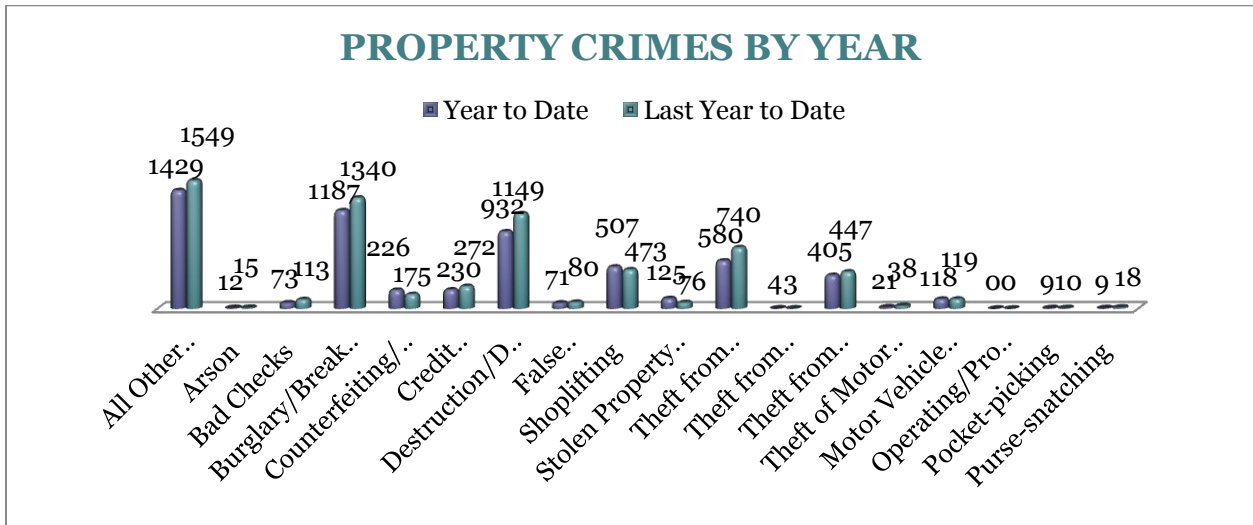


To date this year, 5,938 property offenses have occurred, a 10% decrease, comparing to the last year's data at this same time. The following significant changes are noted this year: Burglaries/Breaking & Entering

are (down 11%), Theft from Building (down 22%), while Counterfeiting/ Forgery (up 29%), and Stolen Property Offenses (up 64%).

MONTHLY REPORT DECEMBER 2012

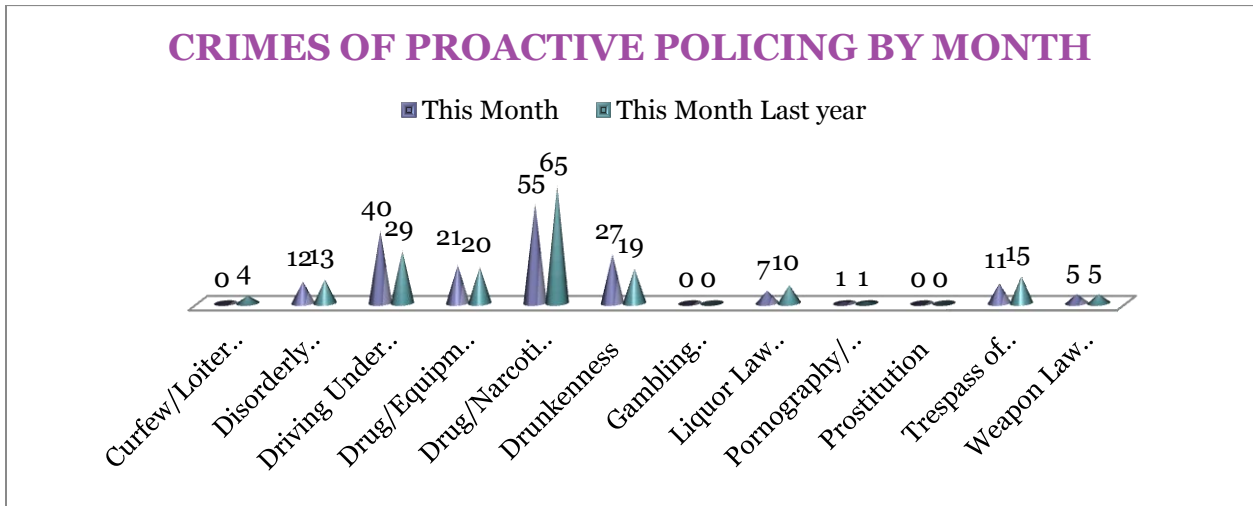
9 January 2013



CRIMES OF PROACTIVE POLICING

Crimes of Proactive Policing are those crimes that result from police officers actively policing the streets to combat certain types of street crime. As a chart below indicates, twelve crimes fall under this category. A total of 179 offenses have

been reported this month, a 1% decrease, comparing to December last year. There is a significant increase in Drunkenness offenses (up 42%) and Driving Under the Influence (up 38%). Liquor Law Violations are down 30%.

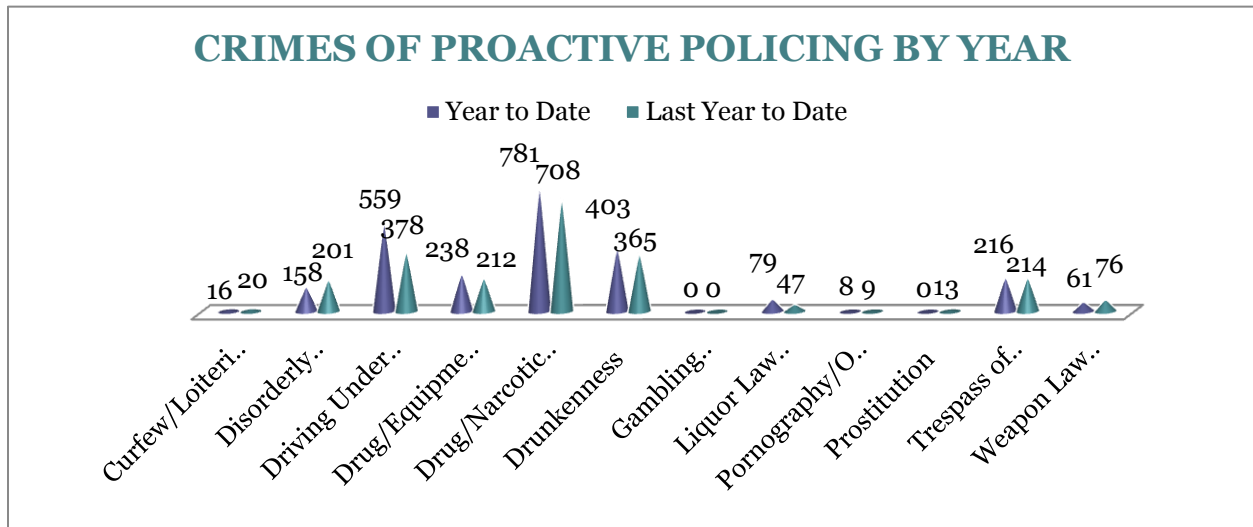


To date for the year 2012, there have been 2,519 crimes of proactive policing reported, an overall 12% increase, comparing to the last year's to date data. Driving Under the Influence is up 48%, Drug/ Narcotic Violations are up 10%, Drunkenness is up 10%, and Liquor Law

Violations increased by 68% this year. Disorderly Conduct is down 21% and Weapon Law Violations decreased by 20% this year. Prostitution is down 100%. There are no other statistically significant changes noted for other offenses in this category.

MONTHLY REPORT DECEMBER 2012

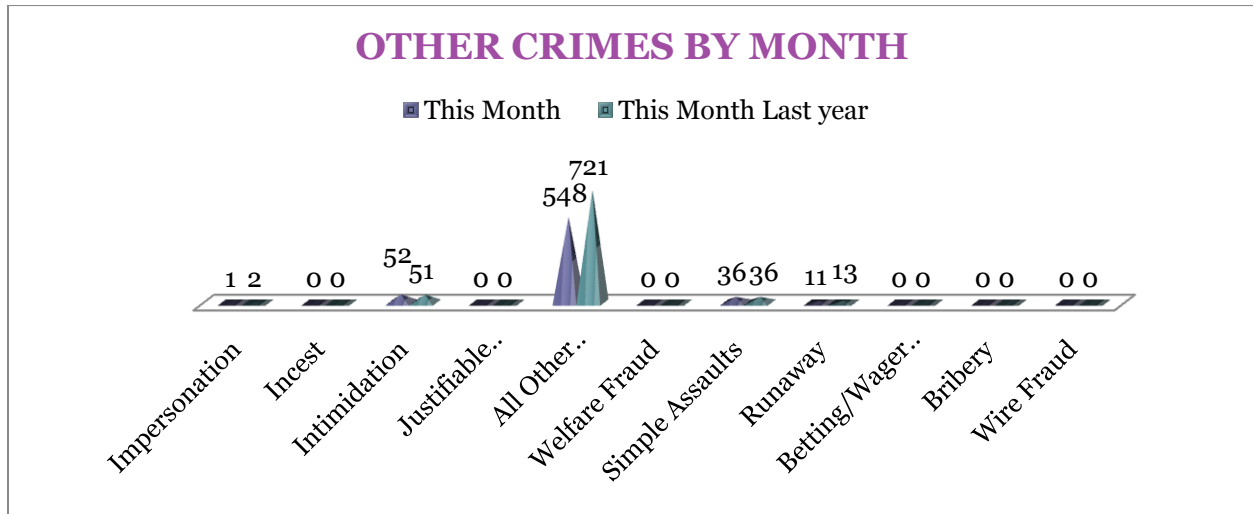
9 January 2013



OTHER CRIMES

There are 11 crimes that fall into the Other Crimes category. This month, there have been a total of 648 Other Crimes, a 21% decrease, comparing to last December (n = 823). Runaways are down 15%, and All

Other Offences are down 24%. Impersonation is up an offense. No other significant changes are noted in this category of crimes this month.

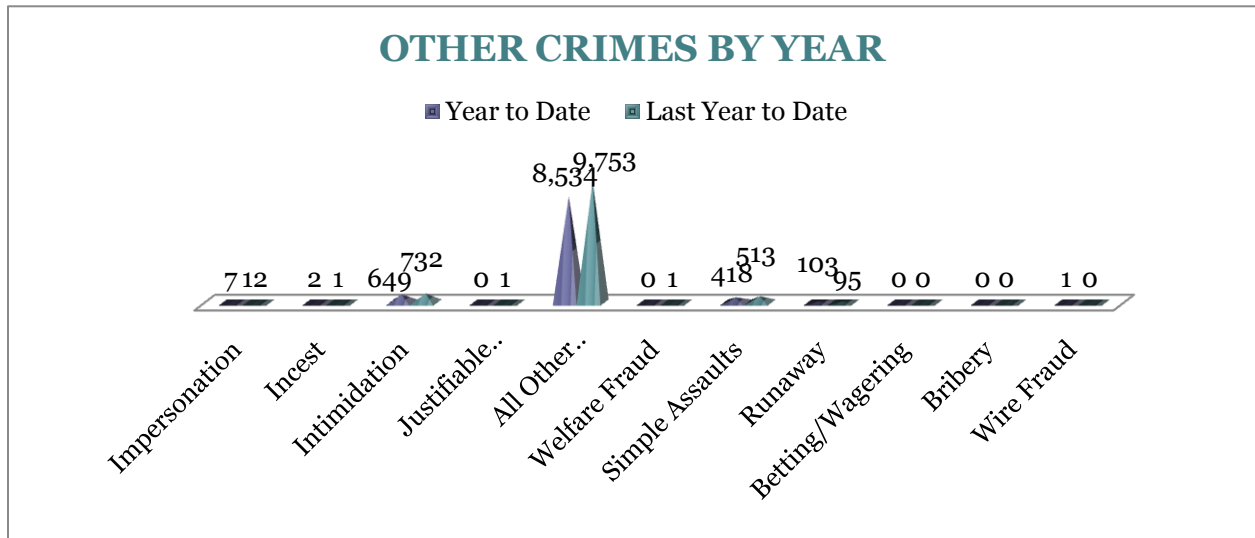


To date this year, there have been 9,714 Other Crimes offenses, a 13% decrease comparing to the last year's to date data. Intimidation offenses are down 11%, Simple Assaults decreased by 19%, All Other Offenses decreased by 12%, and

Intimidation decreased by 42%. No other statistically significant changes have been observed for other offenses within this category, comparing to the last year's data.

MONTHLY REPORT DECEMBER 2012

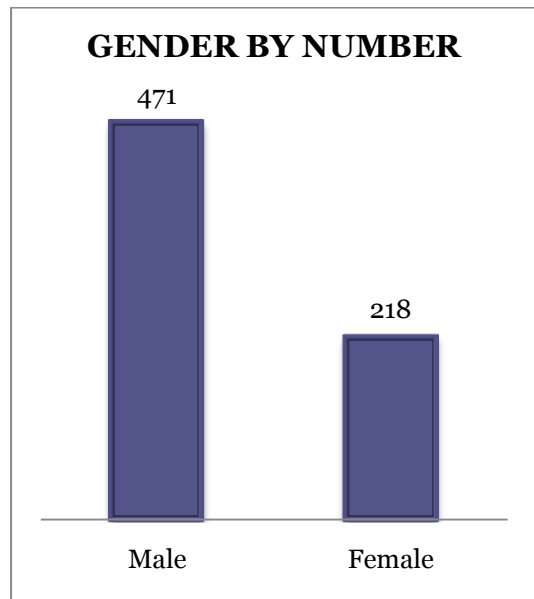
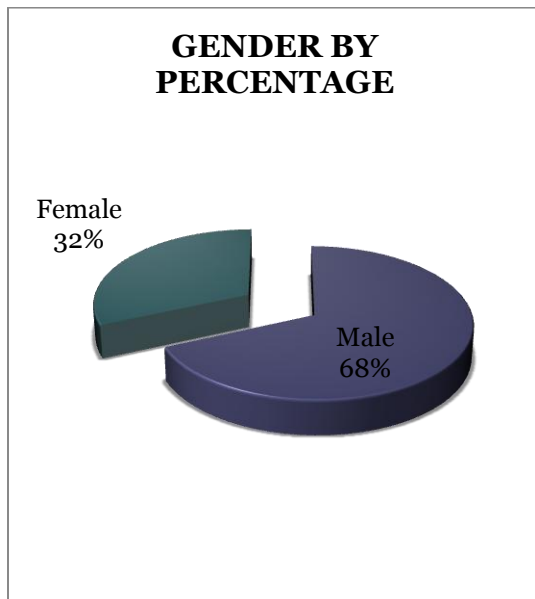
9 January 2013



ARREST DEMOGRAPHICS

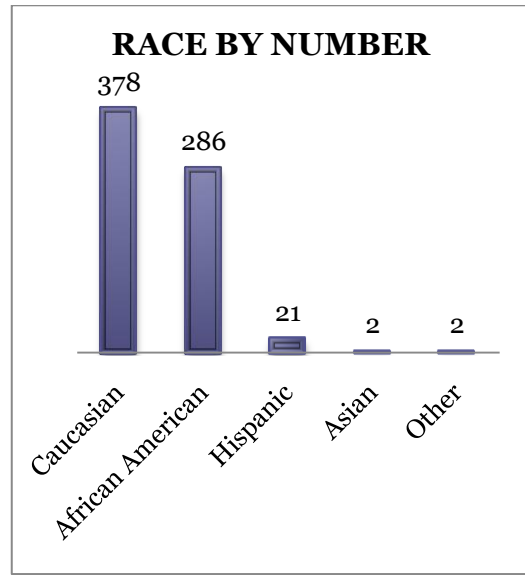
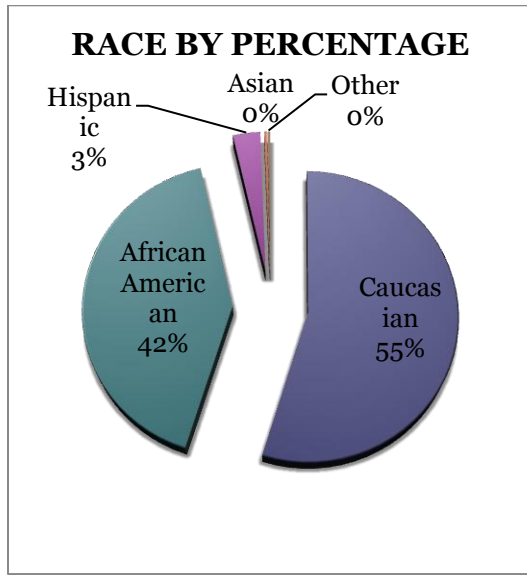
In December, there were a total of 689 arrests carried out by the Jonesboro Police Department. Comparing with the last year's data for the month of December, there was a 17% decrease in arrests this month; that is 52 arrests per 100 crimes in November of this year, comparing to 49 arrests per 100 crimes last year, a 4.5%

increase for arrests per 100 crimes. This section breaks down this month's arrests by race and gender. The majority of offenders have been male ( $n = 471$ ), as opposed to female ( $n = 218$ ) and Caucasian ( $n = 378$ ) and African American ( $n = 286$ ) as opposed to Hispanic ( $n = 21$ ), Asian ( $n = 2$ ), or other/unknown/bi-racial ( $n = 2$ ).



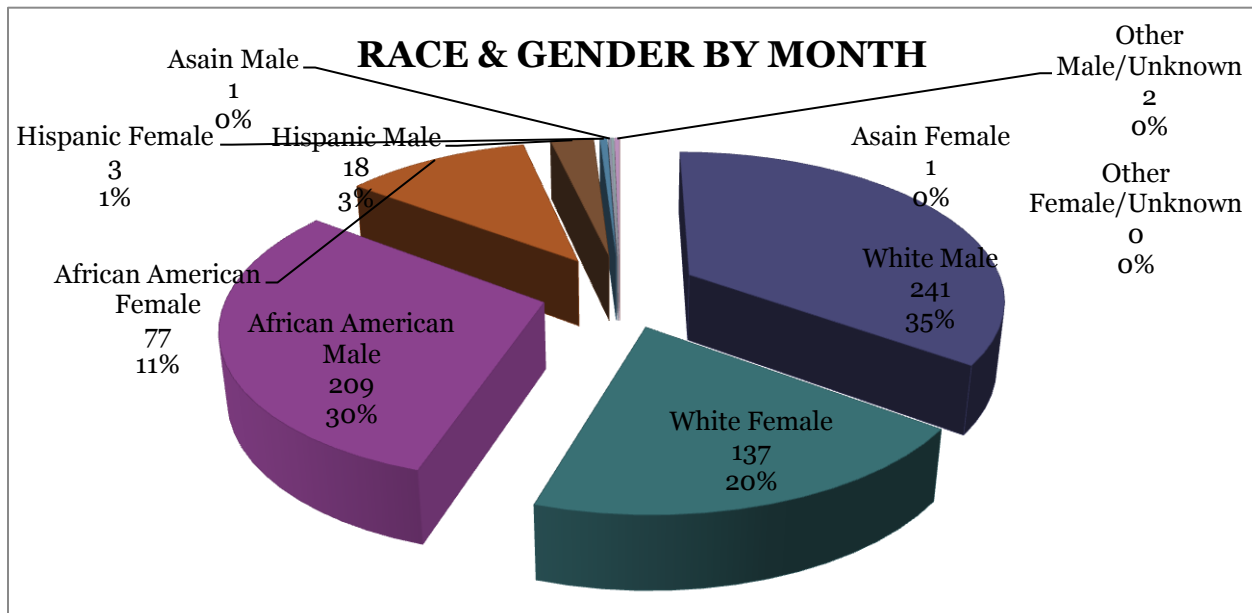
MONTHLY REPORT DECEMBER 2012

9 January 2013



Caucasian males make up the majority, 35%, of arrestees this month ( $n = 241$ ). African American males make up 30% of arrestees for the month of December ( $n = 209$ ). Caucasian females make up 20% ( $n = 137$ ) and African American females make up 11% ( $n = 77$ ) of arrestees this month.

Hispanic males make up 3% ( $n = 18$ ), and Hispanic Females make up 1% ( $n = 3$ ) of arrestees this month. Asian males and females both make up 0% ( $n=1$ ) Other Male / Unknown race arrestees make up yet another 0% ( $n = 2$ ) of all the arrestees in December.





## MONTHLY REPORT DECEMBER 2012

9 January 2013

### EMERGENCY 911

Also known as Public Safety Answering Point (PSAP), the Emergency 911 Division is responsible for answering all calls from public for emergency assistance, accessing the needed information to best assist, and then assigning the most efficient and effective emergency response. In addition,

this division is responsible for setting priority call dispatching to field units including Police, Fire, and EMS. Emergency 911 also maintains all records for radio logs, calls for service, and other emergency service data collections.

Calls by Type	This Month	This Month Last Year	YTD	Last YTD	Change By Month	Change YTD
Land Line E911	793	843	9,358	9,867	-6%	-5%
Cell Phone E911	4,207	3,866	49,835	45,697	9%	9%
Admin Lines -non emer	14,780	15,773	196,979	189,966	-6%	4%
<b>TOTALS</b>	<b>19,780</b>	<b>20,482</b>	<b>256,172</b>	<b>245,530</b>	<b>-3%</b>	<b>4%</b>

Calls by Agency	This Month	This Month Last Year	YTD	Last YTD	Change By Month	Change YTD
Jonesboro PD Calls	6,485	6,928	82,870	81,478	-6%	2%
Craighead Cty Sheriff	1,202	1,324	14,984	15,021	-9%	0%
Jonesboro Fire Dpt - dispatch	216	176	2,631	2,236	23%	18%
Jonesboro Fire Dpt - Med Asst	144	117	1,484	1,288	23%	15%
Craighead Cty - Fire	36	37	746	635	-3%	17%
Craighead Cty - 1st Responder	124	115	1,335	1,146	8%	16%
Emerson Ambulance	309	273	3,656	3,623	13%	1%
Medic One	320	296	3,579	3,547	8%	1%
Air Evac	0	0	9	9	N/C	0%
Coroner	8	2	42	25	300%	68%
ARK State Police	10	24	155	179	-58%	-13%
Jonesboro Animal Control	1	0	23	156	N/C	-85%
Wreckers Called	189	173	2,087	1,927	9%	8%
<b>TOTALS</b>	<b>9,044</b>	<b>9,465</b>	<b>113,601</b>	<b>111,270</b>	<b>-4%</b>	<b>2%</b>

Calls by Municipality	This Month	This Month Last Year	YTD	Last YTD	Change By Month	Change YTD
Bay PD	104	155	1468	1375	-33%	7%
Bono PD	267	266	3266	2358	0%	39%
Brookland PD	156	139	2002	1791	12%	12%
Caraway PD	51	79	1411	1139	-35%	24%
Cash PD	20	12	335	904	67%	-63%
Egypt PD	1	5	76	129	-80%	-41%
Lake City PD	98	90	1507	1242	9%	21%
Monette PD	159	218	1756	1904	-27%	-8%
<b>TOTALS</b>	<b>856</b>	<b>964</b>	<b>11,821</b>	<b>10,842</b>	<b>-11%</b>	<b>9%</b>

### UNIFORM PATROL DIVISION

The UPD is responsible for responding to calls into the Emergency - 911 Division by civilians and are normally the first responders. Jonesboro is divided into 6

patrol districts. Officers from UPD are assigned to a district and work the same district every shift. In addition, when a Traffic Officer is not available, a UPD

## MONTHLY REPORT DECEMBER 2012

9 January 2013

Officer will respond to traffic accidents necessary  
and assist in directing traffic when

Incidents	This Month	This Month Last Year	YTD	Last YTD	Change By Month	Change YTD
Calls for Service	6,485	6,937	83,502	81,218	-7%	3%
Complaints / Calls	3,889	4,166	48,416	49,687	-7%	-3%
Assists	954	1,234	14,132	14,050	-23%	1%
Incident Reports	770	1,003	10,188	11,682	-23%	-13%
Street Accidents	99	104	1,003	987	-5%	2%
Private Property Accidents	50	44	492	534	14%	-8%
Traffic Stops	1,343	2,440	23,443	24,614	-45%	-5%
Traffic Citations	435	804	7,546	8,140	-46%	-7%
Written Warnings	521	1,076	10,148	8,776	-52%	16%
DWI	32	36	458	313	-11%	46%
Mis. Arrests	350	478	5,356	6,138	-27%	-13%
Felony Arrests	77	88	1,075	1,227	-13%	-12%
Warrants Served	773	1,476	15,144	17,834	-48%	-15%
Alarms	420	330	4,259	3,996		
<b>TOTALS</b>	<b>16,198</b>	<b>20,216</b>	<b>225,162</b>	<b>229,196</b>	<b>-20%</b>	<b>-2%</b>
Hours Worked	6,717	11,646	105,675	119,437	-42%	-12%

### PROWL

The Prowl unit is a uniformed street crimes unit specializing in criminal patrol, narcotics enforcement, gang investigation, and prostitution activity. The unit conducts directed patrols, investigates citizen

complaints of street-level criminal activity, and directly assists the 2<sup>nd</sup> Judicial Drug Task Force. PROWL also assists any division within the Jonesboro Police Department at any time when needed.

Incidents	This Month	This Month Last Year	YTD	Last YTD	Change By Month	Change YTD
Street Accidents	0	0	0	0	N/C	N/C
Private Property Accidents	0	0	1	0	N/C	N/C
Traffic Citations	17	16	353	333	6%	6%
DWI	0	0	1	1	N/C	0%
Mis. Arrests	104	64	2,277	1,169	63%	95%
Felony Arrests	11	27	335	287	-59%	17%
Drug Arrests	18	18	320	284	0%	13%
Public Intoxication Arrests	0	0	1	2	N/C	-50%
Calls For Service	94	67	1,212	1,019	40%	19%
Alarms	0	0	0	0	N/C	N/C
Parking Citations	0	0	0	0	N/C	N/C
Written Warnings	46	7	662	486	557%	36%
Assists	0	0	0	0	N/C	N/C
<b>TOTALS</b>	<b>290</b>	<b>199</b>	<b>5,162</b>	<b>3,581</b>	<b>46%</b>	<b>44%</b>

Value of Drugs Seized	\$ 1,150	\$ 1,848	\$ 201,985	\$ 71,958	-38%	181%
Value of Assets Seized	\$ -	\$ 350	\$ 34,218	\$ 52,680	-100%	-35%
Patrol Miles	5,050	4,950	72,400	63,120	2%	15%

## MONTHLY REPORT DECEMBER 2012

9 January 2013

### CRIMINAL INVESTIGATIVE DIVISION

The CID is responsible for conducting follow-up investigations into criminal acts reported to the Jonesboro Police Department. The primary goal is to collect and present evidence that conclusively

leads to a successful arrest. Additionally, CID is charged with clearing additional crimes, recovering stolen property, preventing additional crimes, and gathering intelligence information.

Investigations	This Month	This Month Last Year	YTD	Last YTD	Change By Month	Change YTD
Criminal Investigations Assigned	94	68	849	989	38%	-14%
Criminal Investigations Closed	49	56	649	797	-13%	-19%
Cleared by Arrests	36	38	454	571	-5%	-20%
Unfounded	5	8	75	77	-38%	-3%
Exceptionally Cleared	4	5	51	94	-20%	-46%
Filed With Prosecutors Office	1	5	50	43	-80%	16%
<b>TOTALS</b>	<b>189</b>	<b>180</b>	<b>2128</b>	<b>2571</b>	<b>5%</b>	<b>-17%</b>

Crimes Against Persons	This Month	This Month Last Year	YTD	Last YTD	Change By Month	Change YTD
Criminal Investigations Assigned	24	19	213	238	26%	-11%
Criminal Investigations Closed	18	18	210	232	0%	-9%
Cleared by Arrests	13	10	161	169	30%	-5%
Unfounded	4	2	21	18	100%	17%
Exceptionally Cleared	1	3	12	32	-67%	-63%
Filed With Prosecutors Office	0	3	16	17	-100%	-6%
<b>TOTALS</b>	<b>60</b>	<b>55</b>	<b>633</b>	<b>706</b>	<b>9%</b>	<b>-10%</b>

Property Crimes	This Month	This Month Last Year	YTD	Last YTD	Change By Month	Change YTD
Criminal Investigations Assigned	67	47	588	693	43%	-15%
Criminal Investigations Closed	28	33	390	492	-15%	-21%
Cleared by Arrests	23	27	290	376	-15%	-23%
Unfounded	1	4	45	50	-75%	-10%
Exceptionally Cleared	3	2	37	68	50%	-46%
Filed With Prosecutors Office	1	0	25	16	N/C	56%
<b>TOTALS</b>	<b>123</b>	<b>113</b>	<b>1375</b>	<b>1695</b>	<b>9%</b>	<b>-19%</b>

Crimes Against Children	This Month	This Month Last Year	YTD	Last YTD	Change By Month	Change YTD
Criminal Investigations Assigned	1	2	23	27	-50%	-15%
Criminal Investigations Closed	0	2	33	39	-100%	-15%
Cleared by Arrests	0	1	12	15	-100%	-20%
Unfounded	0	1	9	15	-100%	-40%
Exceptionally Cleared	0	0	2	1	N/C	100%
Filed With Prosecutors Office	0	2	10	11	-100%	-9%
<b>TOTALS</b>	<b>1</b>	<b>8</b>	<b>89</b>	<b>108</b>	<b>-88%</b>	<b>-18%</b>

Miscellaneous Investigations Assigned	2	0	24	10	N/C	140%
Miscellaneous Investigations Cleared	3	0	3	28	N/C	-89%

## MONTHLY REPORT DECEMBER 2012

9 January 2013

### WARRANTS

The Warrants Division is responsible for serving warrants, criminal summonses, and subpoenas that are issued by the District Court. On city court days, the Warrants Division provides a bailiff for court and a transport officer. In addition, this Division

is responsible for transporting wanted persons arrested in other jurisdictions back to Jonesboro. The STEP program operates within this division and is a grant-funded operation in which officers can get paid overtime to enforce the safety belt law.

Arrests	This Month	This Month Last Year	YTD	Last YTD	Change By Month	Change YTD
Misdemeanor	532	1054	12508	13873	-50%	-10%
Felony	0	2	4	12	-100%	-67%
<b>Total Arrests</b>	<b>532</b>	<b>1056</b>	<b>12512</b>	<b>13885</b>	<b>-50%</b>	<b>-10%</b>

Warrants by Activity	This Month	This Month Last Year	YTD	Last YTD	Change By Month	Change YTD
Subpoenas	274	343	5528	4536	-20%	22%
Commitments	2	0	23	20	N/C	15%
Traffic Citations	0	0	21	19	N/C	11%
Complaints	1	0	13	6	N/C	117%
Assist	0	0	2	0	N/C	N/C
Alarms	0	0	1	0	N/C	N/C

Hours by Activity	This Month	This Month Last Year	YTD	Last YTD	Change By Month	Change YTD
SI Criminal	104.25	178.75	2693.75	2785.25	-42%	-3%
Court	81	92.5	1467.67	1412.08	-12%	4%
Prisoner Transport	14	29	321	228	-52%	41%

Hours Worked	This Month	This Month Last Year	YTD	Last YTD	Change By Month	Change YTD
Regular Hours Worked	414	501	9188	7345.5	-17%	25%
Overtime Hours Worked	1	4.5	63	90.75	-78%	-31%
<b>TOTAL Hours Worked</b>	<b>415</b>	<b>505.5</b>	<b>9251</b>	<b>7436.25</b>	<b>-18%</b>	<b>24%</b>

Mileage	This Month	This Month Last Year	YTD	Last YTD	Change By Month	Change YTD
<b>Total Mileage</b>	<b>1710</b>	<b>2302</b>	<b>27525</b>	<b>28070</b>	<b>-26%</b>	<b>-2%</b>

STEP	This Month	This Month Last Year	YTD	Last YTD	Change By Month	Change YTD
DWI Arrest	1	2	9	10	-50%	-10%
DUI Arrest	0	0	0	0	N/C	N/C
Traffic Citations	88	98	2048	1899	-10%	8%
Felony Arrests	0	0	7	4	N/C	75%
Drug Arrests	0	0	2	1	N/C	100%
<b>STEP TOTALS</b>	<b>89</b>	<b>100</b>	<b>2066</b>	<b>1914</b>	<b>-11%</b>	<b>8%</b>

<b>STEP Hours Worked</b>	<b>49</b>	<b>99</b>	<b>1229.5</b>	<b>1383</b>	<b>-51%</b>	<b>-11%</b>
<b>STEP Miles Driven</b>	<b>230</b>	<b>545</b>	<b>6723.5</b>	<b>8377</b>	<b>-58%</b>	<b>-20%</b>

## MONTHLY REPORT DECEMBER 2012

9 January 2013

### DRUG TASK FORCE

The DTF is responsible for investigating major drug traffickers in the area, including all types of illegal drugs. They

work closely with local, state, and federal agencies to eradicate drugs from the community.

INVESTIGATIONS	This Month	This Month Last Year	YTD	Last YTD	Change By Month	Change YTD
Opened	11	26	275	283	-58%	-3%
Closed	11	24	221	275	-54%	-20%
<b>TOTAL</b>	<b>22</b>	<b>50</b>	<b>496</b>	<b>558</b>	<b>-56%</b>	<b>-11%</b>

With Nexus to Jonesboro	This Month	This Month Last Year	YTD	Last YTD	Change By Month	Change YTD
Opened	11	26	254	292	-58%	-13%
Closed				0	N/C	N/C
<b>TOTAL</b>	<b>11</b>	<b>26</b>	<b>254</b>	<b>292</b>	<b>-58%</b>	<b>-13%</b>

Outside Jonesboro (No Known Nexus)	This Month	This Month Last Year	YTD	Last YTD	Change By Month	Change YTD
Opened	0	0	12	13	1300%	-8%
Closed	0	0		0	0%	N/C
<b>TOTAL</b>	<b>0</b>	<b>0</b>	<b>12</b>	<b>13</b>	<b>N/C</b>	<b>-8%</b>

ASSISTANCE RENDERED	This Month	This Month Last Year	YTD	Last YTD	Change By Month	Change YTD
Assist to Outside Agencies	2	0	66	18	N/C	267%
Assist to Jonesboro UPD/CID	2	21	120	167	-90%	-28%

ARRESTS	This Month	This Month Last Year	YTD	Last YTD	Change By Month	Change YTD
Miscellaneous	5	23	70	116	-78%	-40%
Felony	11	51	323	388	-78%	-17%
Marijuana	1	7	46	89	-86%	-48%
Cocaine	1	3	17	24	-67%	-29%
Crack Cocaine	0	1	26	29	-100%	-10%
Methamphetamine/ICE	4	8	99	113	-50%	-12%
LSD	0	0	0	0	N/C	N/C
Extasy (MDMA or Other Designer Drug)	0	1	0	1	-100%	-100%
Prescription	1	6	27	28	-83%	-4%
Opiates (Heroin, Opium)	0	0	2	1	N/C	100%
Labs	0	0	8	16	N/C	-50%
All Other Drug Offenses	3	0	49	0	N/C	N/C

ASSET FORFEITURE	This Month	This Month Last Year	YTD	Last YTD	Change By Month	Change YTD
Vehicles Seized (No.)	0	0	5	2	N/C	150%
Value of Assets Seized(Includes Value of vehicles)	\$0	\$6,669	\$123,211	\$69,898	-100%	76%
Asset Value Awarded to Jonesboro PD (State)		\$0	\$0	\$0	N/C	N/C
Asset Value Awarded to Jonesboro PD (Federal)		\$0	\$0	\$0	N/C	N/C
Asset Value Awarded to Jonesboro PD (Total)		\$0	\$0	\$0	N/C	N/C

## MONTHLY REPORT DECEMBER 2012

9 January 2013

ARRESTS DEMOGRAPHICS	This Month	This Month Last Year	YTD	Last YTD	Change By Month	Change YTD
White	9	21	147	206	-57%	-29%
African American	3	12	91	108	-75%	-16%
Latino	0	0	47	10	N/C	370%
Asian	0	0	0	1	N/C	-100%
Other/Bi-Racial	0	0	0	1	N/C	-100%
Male	7	23	200	232	-70%	-14%
Female	2	10	69	91	-80%	-24%
White Male	7	13	83	130	-46%	-36%
White Female	2	8	52	73	-75%	-29%
African American Male	3	10	79	89	-70%	-11%
African American Female	0	2	12	16	-100%	-25%
Latino Male	0	0	33	10	N/C	230%
Latino Female	0	0	3	0	N/C	N/C
Asian Male	0	0	0	0	N/C	N/C
Asian Female	0	0	0	0	N/C	N/C
Other/Bi-Racial Male	0	0	0	0	N/C	N/C
Other/Bi-Racial Female	0	0	0	0	N/C	N/C

### TRAFFIC

Comprised of three motor units and three Chargers, the Traffic Enforcement Unit responds to traffic accidents and provides increased enforcement in particularly challenging areas. This unit also provides

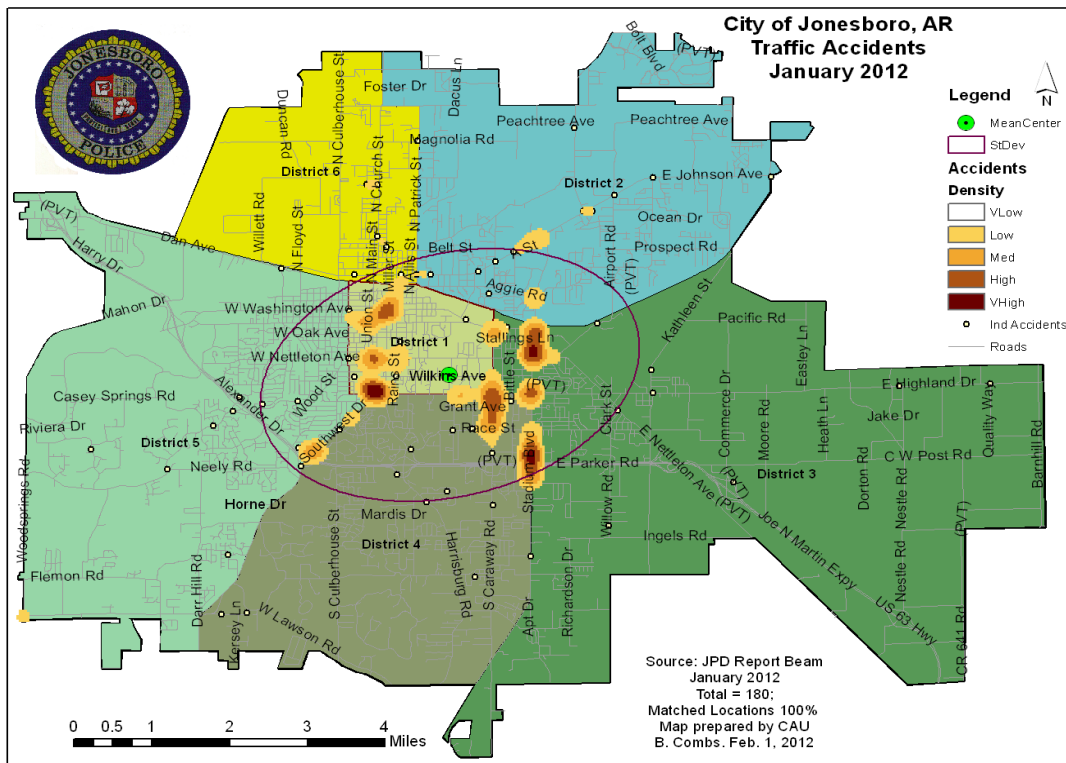
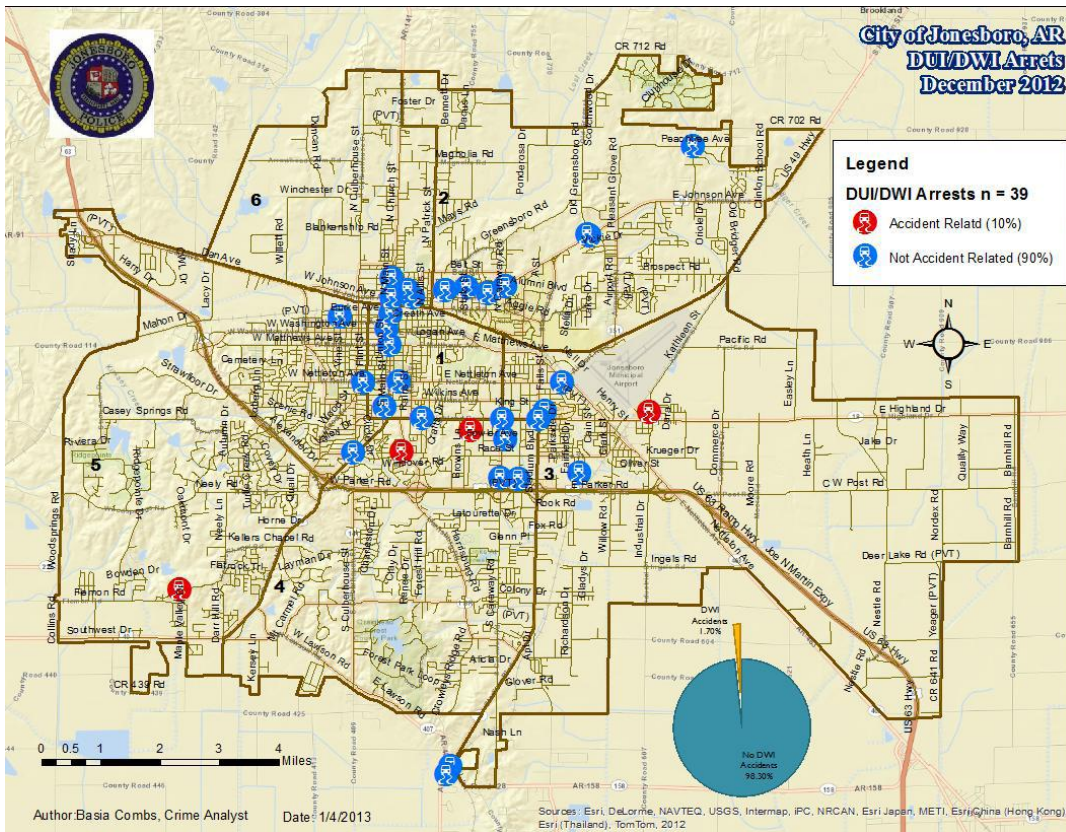
extra coverage for specific congestion problems and special events in the community. Last, they work details targeting specific issues, such as DWI enforcement and traffic safety checkpoints.

Incidents	This Month	This Month Last Year	YTD	Last YTD	Change By Month	Change YTD
Street Accidents	109	161	1647	1634	-32%	1%
Private Property Accidents	20	47	435	483	-57%	-10%
Traffic Citations	51	148	1450	2068	-66%	-30%
DWI	1	0	33	39	N/C	-15%
Mis. Arrests	15	1	162	171	1400%	-5%
Felony Arrests	2	1	9	18	100%	-50%
Drug Arrests	0	0	0	0	N/C	N/C
Public Intoxication Arrests	0	0	0	2	N/C	-100%
Calls For Service	157	220	2955	3309	-29%	-11%
Alarms	0	0	0	14	N/C	-100%
Parking Citations	0	0	0	0	N/C	N/C
Written Warnings	22	38	1174	791	-42%	48%
<b>TOTALS</b>	<b>377</b>	<b>616</b>	<b>7865</b>	<b>8529</b>	<b>-39%</b>	<b>-8%</b>
Value of Asstes Seized	\$0	\$0	\$0	\$0	N/C	N/C
Patrol Miles	2,999	5,509	64,105	58,363	-46%	10%
Hours Worked	502	780	9840.5	9370.5	-36%	5%



# MONTHLY REPORT DECEMBER 2012

9 January 2013



# MONTHLY REPORT DECEMBER 2012

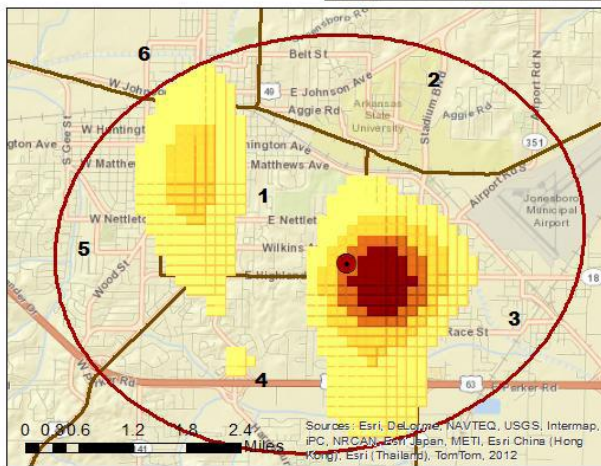
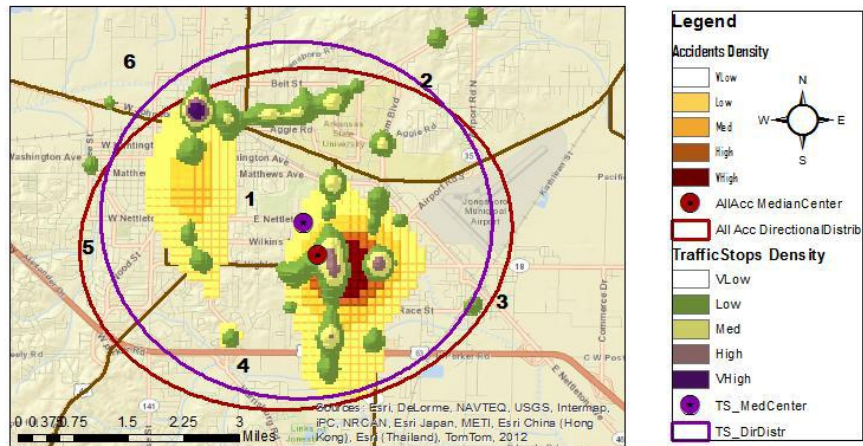
9 January 2013



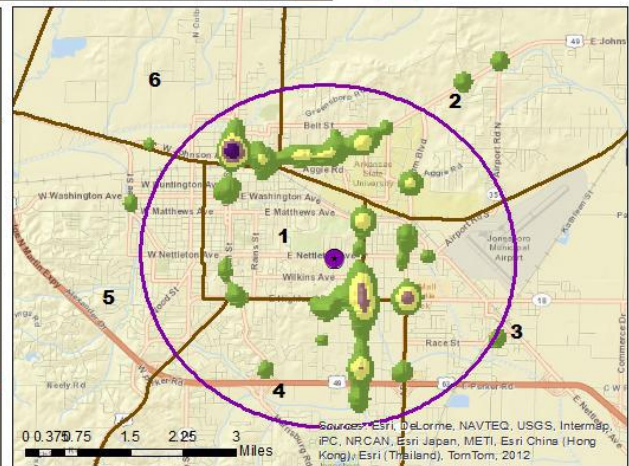
## City of Jonesboro, AR Traffic Accidents Traffic Stops December 2012

Traffic Accidents Source:  
Report Beam, n = 235

Traffic Stops Source: RPS  
n = 68; matched 74%



Author: Basia Combs, Crime Analyst



Date: 1/4/2013

## PARKING ENFORCEMENT

The Parking Enforcement Division is responsible for enforcing parking laws in the downtown area. This service provides a

safe and convenient parking situation for the public.

CITATIONS ISSUED	This Month	This Month Last Year	YTD	Last YTD	Change By Month	Change YTD
Citations	26	58	365	375	-55%	-3%
Verbal Warnings	23	8	201	0	N/C	N/C
MINUTES BY ACTIVITY	This Month	This Month Last Year	YTD	Last YTD	Change By Month	Change YTD
Office	630	70	4,805	10,685	800%	-55%
Admin(Non-Office)	0	2,155	465	10,495	-100%	-96%
Community	0	0	0	0	N/C	N/C
Training	0	180	0	115	-100%	-100%
Patrol	6,210	5,455	58,985	43,560	14%	35%



## MONTHLY REPORT DECEMBER 2012

9 January 2013

### ANIMAL CONTROL

The Animal Control Division is responsible for educating the public on safe and humane issues regarding animal treatment, enforcing all animal laws and ordinances, assisting the public in resolving animal

issues, and protecting the safety and welfare of the citizens and animals in this community.

Incidents	This Month 04/12	This Month Last Year	YTD 2012	Last YTD 2011	Change By Month	Change YTD
Barking Complaints	8	8	96	126	0%	-24%
Bite Reports	2	5	79	113	-60%	-30%
Door Hangers	46	20	800	381	130%	110%
Welfare Checks	59	54	880	1018	9%	-14%
Advised of Rights	679	288	10891	8066	136%	35%
Incident Reports	6	1	53	59	500%	-10%
Gone on Arrival	46	22	705	346	109%	104%
Complaints	641	523	8781	6876	23%	28%
Desk Complaints	1001	867	16991	16265	15%	4%
Captured Dogs	104	96	1517	1423	8%	7%
Captured Cats	4	4	132	325	0%	-59%
Captured Wildlife	5	6	358	278	-17%	29%
Chemical Captures	0	4	28	27	-100%	4%
Traps	10	6	417	173	67%	141%
Deceased Animals	64	47	890	623	36%	43%
Assist J.P.D.	4	3	62	103	33%	-40%
Assist C.S.O.	0	1	7	18	-100%	-61%
Public Relations	259	425	5831	8364	-39%	-30%
CITATIONS ISSUED	24	75	466	1121	-68%	-58%
WARNINGS ISSUED	100	27	659	646	270%	2%

Incidents	This Month 04/12	This Month Last Year	YTD 2012	Last YTD 2011	Change By Month	Change YTD
Physical Arrests	0	1	13	50	-100%	-74%
City Warrants Served	0	6	45	264	-100%	-83%
County Warrants Served	0	0	22	78	N/C	-72%
Felony Bench Warrants	0	0	2	8	N/C	-75%
Euthanized	74	35	918	799	111%	15%
Deceased Animals Landfill lbs.	2500	3020	37816	40440	-17%	-6%
Wildlife Euthanized	5	6	346	278	-17%	24%
Sent to Rescue Centers	3	2	65	28	50%	132%
Adoptions	49	39	530	469	26%	13%
Miles Driven	7,676	8869	87,110	81,183	-13%	7%

### FLEET MAINTNANCE

The Fleet Maintenance is responsible for all of the police vehicle maintenance upkeep, cleanliness, and purchasing. In addition,

this Division handles most of the purchasing of equipment, supplies, and uniforms for all of the Police Department.

## MONTHLY REPORT DECEMBER 2012

9 January 2013

Repair Costs by Model Year	This Month	This Month Last Year	YTD	Last YTD	Change By Month	Change YTD
95-99	\$0.00	\$0.00	\$0.00	\$0.00	N/C	N/C
2000	\$0.00	\$0.00	\$115.09	\$292.92	N/C	-61%
2001	\$0.00	\$0.00	\$300.46	\$1,082.20	N/C	-72%
2002	\$0.00	\$0.00	\$0.00	\$405.65	N/C	-100%
2003	\$0.00	\$0.00	\$0.00	\$90.00	N/C	-100%
2004	\$0.00	\$176.12	\$1,892.84	\$1,829.78	-100%	3%
2005	\$0.00	\$182.83	\$1,000.39	\$9,850.11	-100%	-90%
2006	\$1,480.39	\$2,730.09	\$44,628.63	\$37,535.77	-46%	19%
2007	\$362.86	\$1,604.59	\$17,667.74	\$18,332.96	-77%	-4%
2008	\$0.00	\$732.13	\$5,032.48	\$3,378.13	-100%	49%
2009	\$232.05	\$371.63	\$4,518.83	\$1,859.09	N/C	N/C
2010	\$0.00	\$0.00	\$992.18	\$433.45	N/C	N/C
2011	\$0.00	\$23.22	\$2,456.92	\$833.77	N/C	N/C
2012	\$0.00	n/a	n/a	n/a	N/C	N/C
Totals	\$2,075.30	\$5,820.61	\$78,605.56	\$75,923.83	-64%	4%

Routine Preventative Maintenance by Model Year	This Month	This Month Last Year	YTD	Last YTD	Change By Month	Change YTD
95-99	\$0.00	\$0.00	\$488.54	\$78.00	N/C	526%
2000	\$0.00	\$714.39	\$20.00	\$754.39	-100%	-97%
2001	\$0.00	\$210.35	\$0.00	\$1,230.75	-100%	-100%
2002	\$0.00	\$0.00	\$100.46	\$50.30	N/C	100%
2003	\$0.00	\$0.00	\$489.50	\$138.00	N/C	255%
2004	\$4.50	\$390.79	\$424.13	\$2,391.59	-99%	-82%
2005	\$0.00	\$442.64	\$1,197.24	\$4,593.25	-100%	-74%
2006	\$797.99	\$1,468.12	\$17,659.63	\$18,962.14	-46%	-7%
2007	\$724.84	\$583.20	\$10,597.63	\$11,482.33	24%	-8%
2008	\$0.00	\$20.00	\$6,081.60	\$2,725.23	-100%	123%
2009	\$1,417.07	\$225.00	\$9,715.21	\$5,076.17	N/C	N/C
2010	\$20.00	\$0.00	\$4,092.82	\$2,142.69	N/C	N/C
2011	\$66.50	\$192.00	\$2,727.87	\$692.00	N/C	N/C
2012	\$65.00	n/a	\$663.40	n/a	N/C	N/C
Totals	\$3,095.90	\$4,246.49	\$54,258.03	\$50,316.84	-27%	8%

### RECORDS

The Records Division is responsible for providing administrative and clerical support to the department. Major responsibilities include entering the accident and incident reports and tickets into the records database management

system, assisting the general public for report requests, performing criminal backgrounds, serving as a switchboard at times, performing validations, and setting up and managing the payment plans out of court.

## MONTHLY REPORT DECEMBER 2012

9 January 2013

RECORDS	This Month	This Month Last Year	YTD	Last YTD	Change By Month	Change YTD
Incident/Arrest Reports Processed	1109	1266	14776	15850	-12%	-7%
Accident Reports Processed	235	239	2586	2548	-2%	1%
Citations Processed	2527	3729	46525	52310	-32%	-11%
Warnings Processed	703	601	10048	7322	17%	37%
Backgrounds	8	5	216	197	60%	10%
Fingerprints	84	74	1324	1074	14%	23%
Photos	0	1	8	20	-100%	-60%
Accident Requests	101	169	1412	1417	-40%	0%
Accident Requests Online	122	100	1409	1683	22%	-16%
<b>TOTALS</b>	<b>4,889</b>	<b>6,184</b>	<b>78,304</b>	<b>82,421</b>	<b>-21%</b>	<b>-5%</b>

### PROFESSIONAL STANDARDS

The Office of Professional Standards, a unit within Administration, is charged with the compilation and updating of an extensive set of policies and procedures and providing a general operations guideline and code of conduct for officers to follow.

In the event that a member of the public does experience a negative interaction with an officer, mechanisms are in place for them to lodge a complaint. All complaints are reviewed and investigations completed in a timely manner.

Professional Standards	This Month	This Month Last Year	YTD	Last YTD	Change By Month	Change YTD
Opened (TOTAL)	8	8	69	53	0%	30%
Closed	8	8	69	560	0%	-88%
Inquiries	8	7	62	43	14%	44%
Formal Investigations	0	1	7	11	-100%	-36%
Sustained	7	5	51	41	40%	24%
Not-Sustained	0	0	1	6	N/C	-83%
Exonerated	1	0	5	2	N/C	150%
Unfounded	0	3	13	6	-100%	117%

*END OF REPORT*