

---

# JPD Monthly Report

---

February 2010

---

Heather Clements,  
Crime Analyst

---



## Executive Summary

The purpose of the Jonesboro Police Department Monthly Report is to compile data into one integrated report for review, allowing for a seamless flow of information for better decision-making. After each department collates their monthly numbers and sends it to Crime Analysis, it is organized into sections of departmental data, analyzed and packaged, and finally disseminated to department heads, the Chief of Police, the City Mayor, and the City Council. Major sections include Crime Analysis, Emergency 911, Uniform Police Division, Prowl, Criminal Investigative Division, Warrants, Drug Task Force, Traffic, Parking Enforcement, Animal Control, Fleet Maintenance, Records, and Professional Standards.

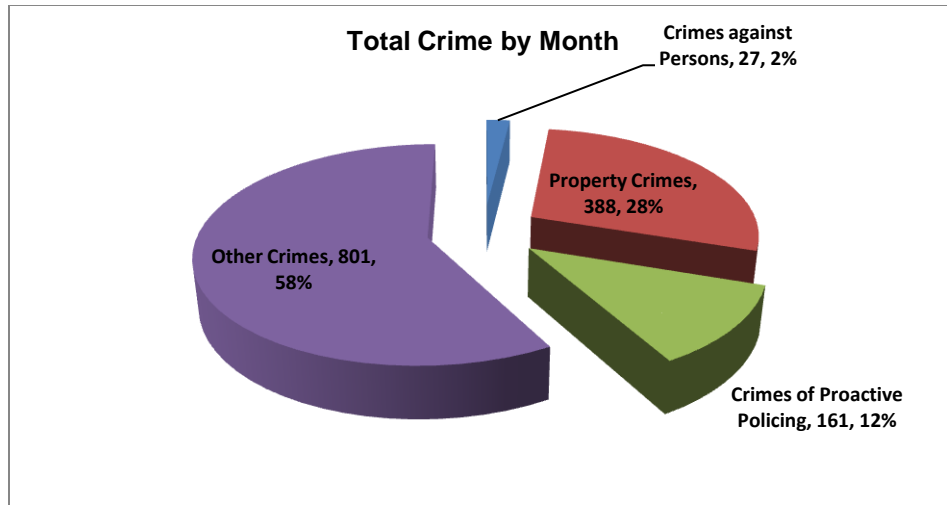
## Crime Analysis

The Crime Analysis division consists of a Crime Analyst and an assistant. The Crime Analyst position is responsible for the analysis and dissemination of crime activity data and the collection and maintenance of crime intelligence information for the city of Jonesboro. Additionally, the Crime Analyst is charged with providing the department with current and accurate crime maps, presenting crime activity data to audiences of interest, and responding to requests for crime data from civilians and departmental staff. Data exported from this division is used by field agents for more effective, efficient policing, administration for improved staffing decisions, and the Mayor's office for community decision making and enhanced public relations. This section is broken down by 6 sections: total crime, crimes against persons, property crimes, crimes of proactive policing, other crimes, and arrest demographics.

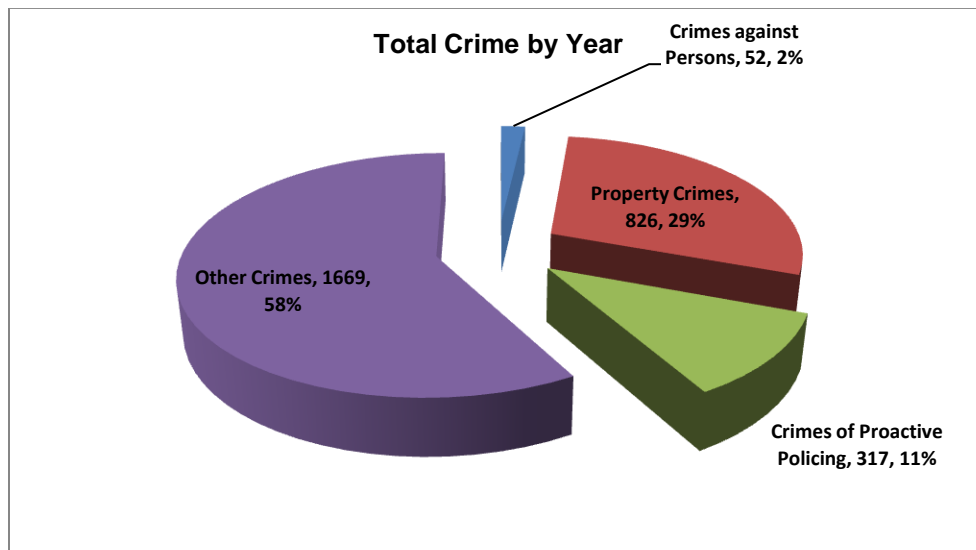
### Total Crime

The crime activity for this month is at a total of 1,377 offenses, up from 1,010 offenses last February, a 36% increase. Other crimes absorb the majority of this month's crime activity at 58% ( $n = 801$ ). Property crimes fall in second place with 28% ( $n = 388$ ). Following in third and fourth places are crimes of proactive policing with 12% ( $n = 161$ ), and crimes against persons with only 2% ( $n = 27$ ).

---

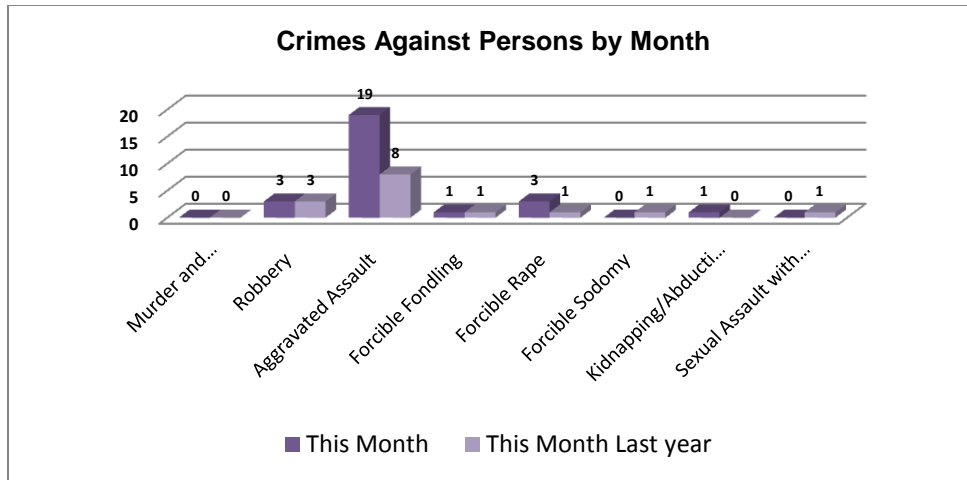


Year to date data includes January and February data combined, of which there is a total of 2,864 offenses, up from 2,243 last February, a 28% increase. Again, other crimes has the highest percentage to total crimes at 59% ( $n = 1,669$ ). Similar to this month's data, property crimes takes second place at 29% ( $n = 826$ ). Following are the crimes of proactive policing at 11% ( $n = 317$ ) and crimes against persons at 2% ( $n = 52$ ).

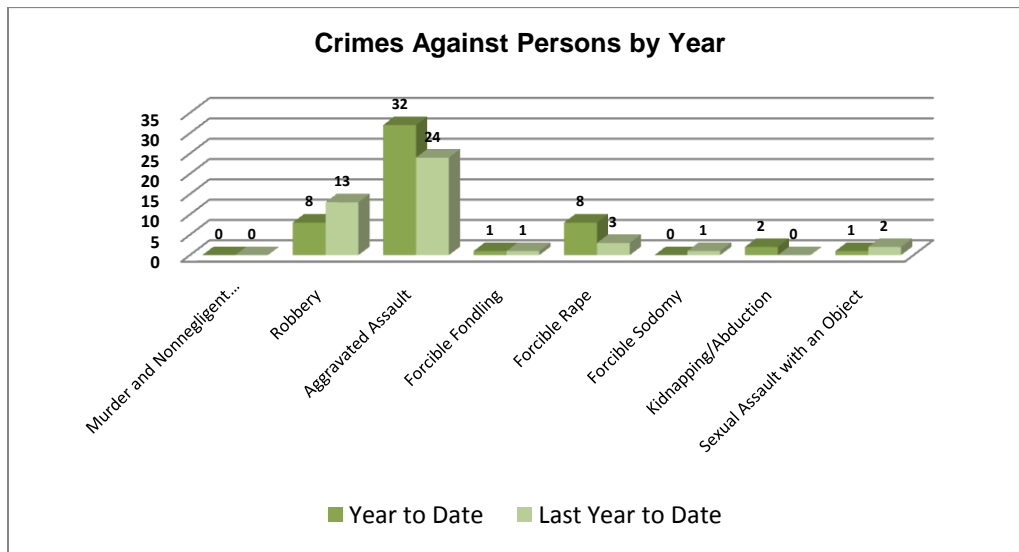


### Crimes against Persons

There are 8 crimes that make up this section. There were a total of 27 offenses in this area this month, up from 15 last February, a 80% increase. The following chart demonstrates this month's activity compared to February of last year's activity in all 8 areas. Significantly higher are the aggravated assaults up from 8 to 19, a 138% increase.

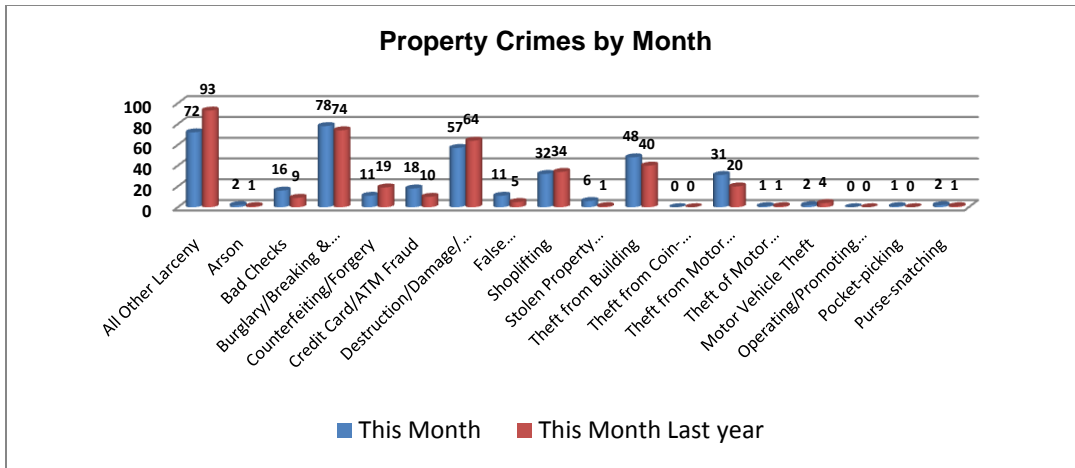


Below is a bar graph indicating the year to date data for crimes against persons. Total number of year to date crimes against persons is 52, up from 44 last year, a 18% increase. Although year to date robberies are down 38%, aggravated assault offenses are up from 24 to 32, a 33% increase and rape is up from 3 this time last year to 8 this year.

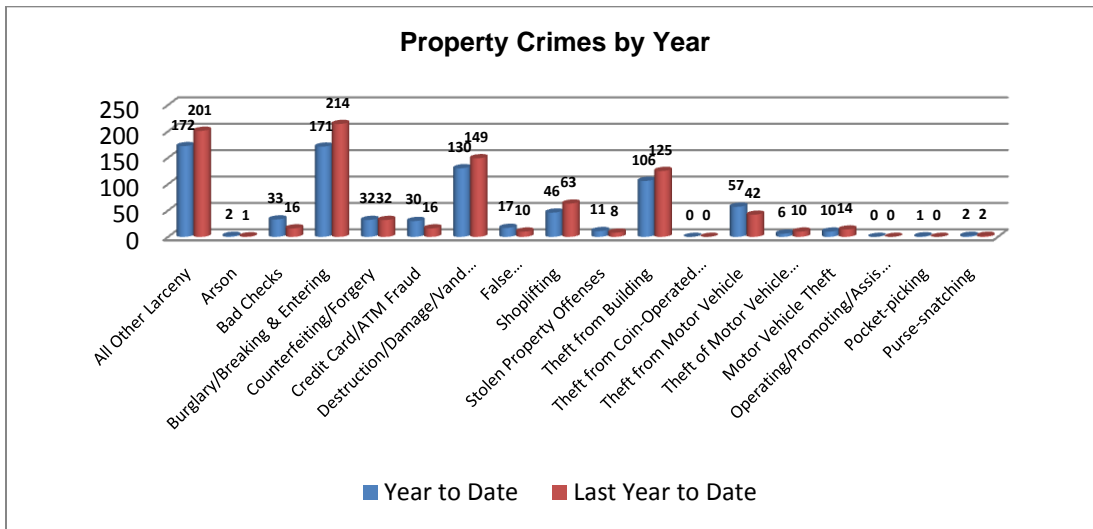


### Property Crimes

This section displays the criminal activity for 18 crimes, all against property. This month, there were a total of 388 property crimes, up from 376 last February. This is only a 3% increase in property crimes from last February. Those crimes in this category noticeably higher than last February are credit card fraud (80%), swindling (120%), thefts from buildings (20%), and thefts from motor vehicles (55%). Areas where crime is significantly down are larceny (23%), counterfeiting (42%), destruction to property (11%), and motor vehicle thefts (down from 4 to 2).

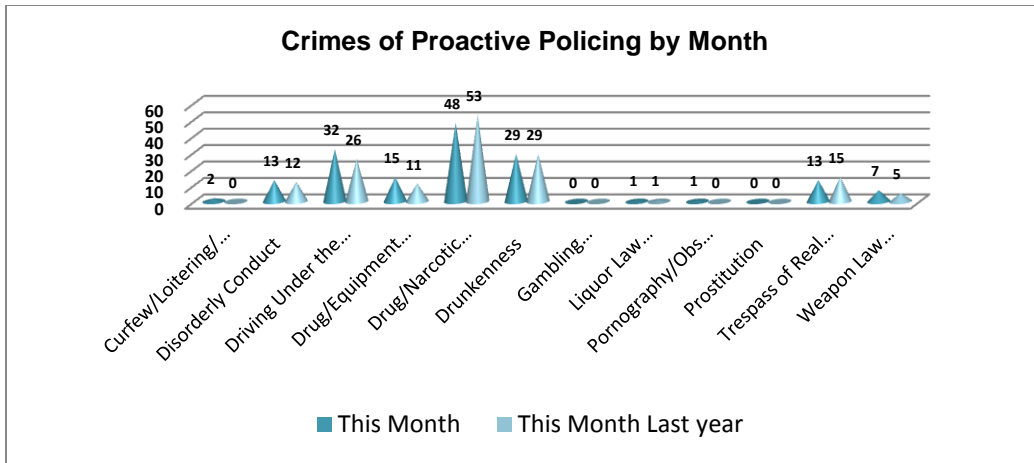


To date this year, 826 property offenses have occurred, down from 903 last year at this same time. This is a 9% decrease in property crimes from this time last year. Those crime areas that are down include larceny (14%), burglary (20%), destruction of property (13%), thefts from buildings (15%), theft of motor vehicle parts (40%), and motor vehicle thefts (29%). A few crimes have increased, such as, bad checks (106%) and thefts from motor vehicles (36%).

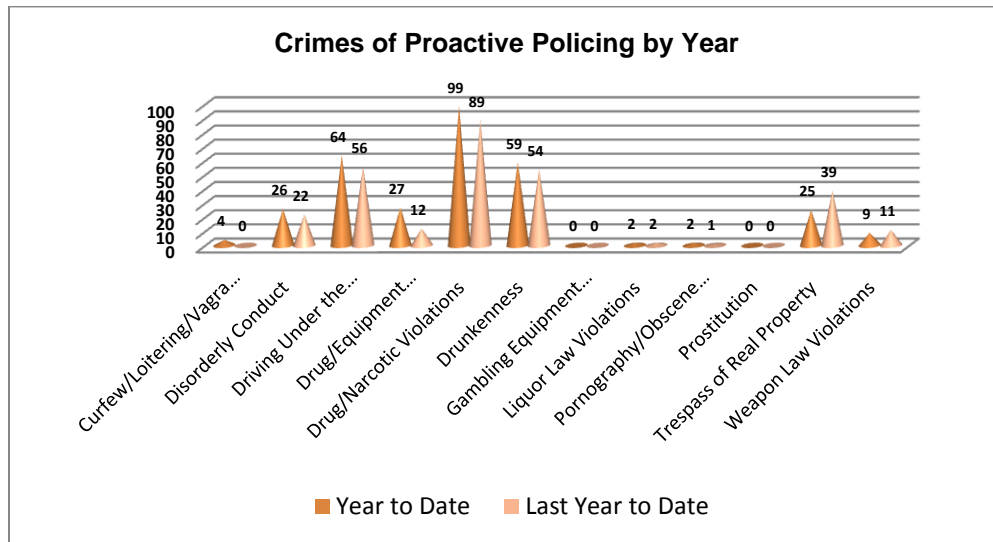


### Crimes of Proactive Policing

Crimes of proactive policing are those crimes that result from police officers actively policing the streets to combat certain types of street crime. Twelve crimes fall under this category. A total of 161 offenses have occurred this month, only a 6% increase from last February ( $n = 152$ ). One decrease can be noticed in drug/narcotic violations, down to 48 from 53 last February, a 9% decrease. Most of these areas have increased, such as, Driving under the influence (23%), drug/equipment violations (36%), and weapon law violations (up from 5 to 7).

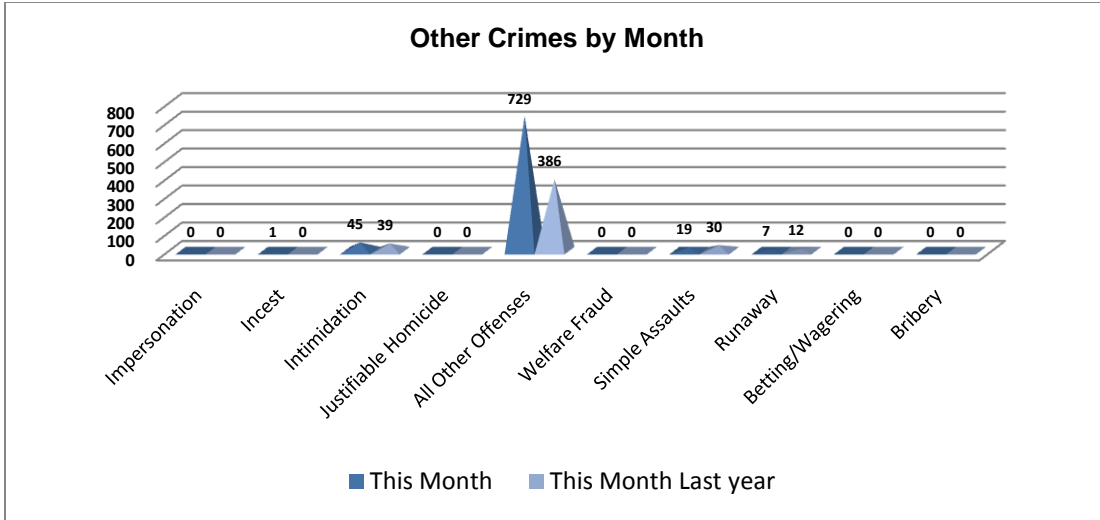


To date for the year, there have been 317 crimes of proactive policing. This is up from 286 last February, a 11% increase. Again, driving under the influence is up from last February (14%). Other increases include drug/equipment violations (125%), drug/narcotic violations (11%), and drunkenness (9%). Areas of decreased activity are trespassing (36%) and weapon law violations (down to 9 from 11).

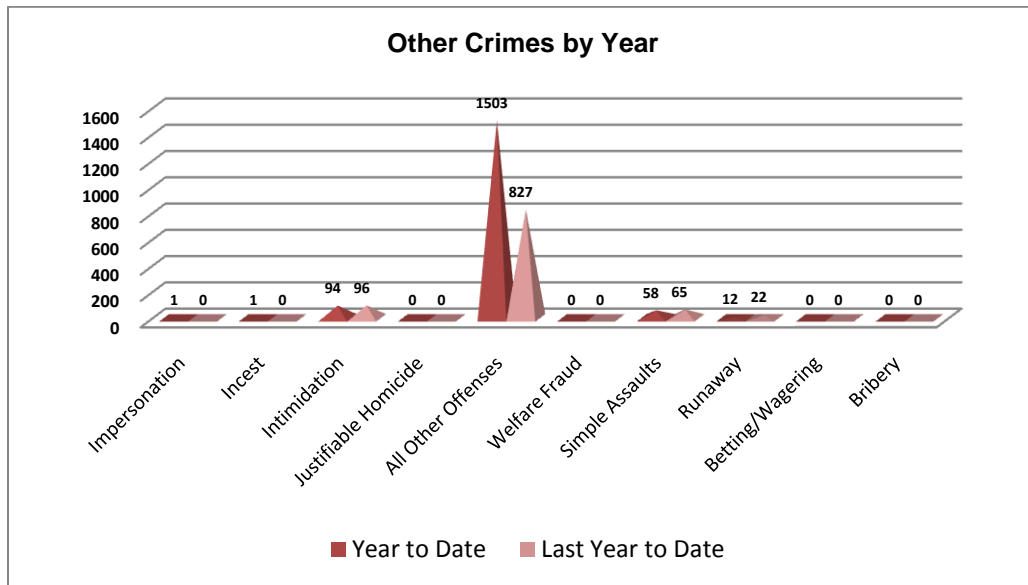


### Other Crimes

There are 10 crimes that fall into the other crimes category. This month, there have been a total of 801 other crimes up from 467 last February, a 72% increase. As indicated there is little change in most of these areas, with the exception of intimidation, which has increased by 15% and all other offenses, which have increased by 89%.

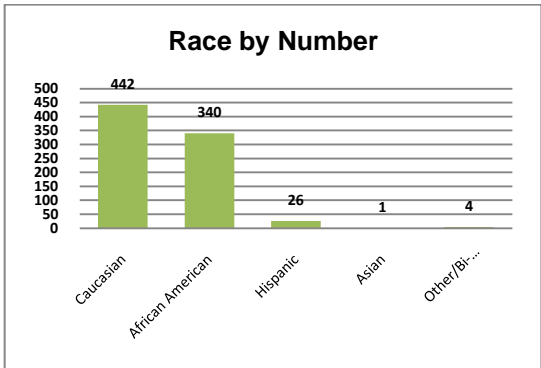
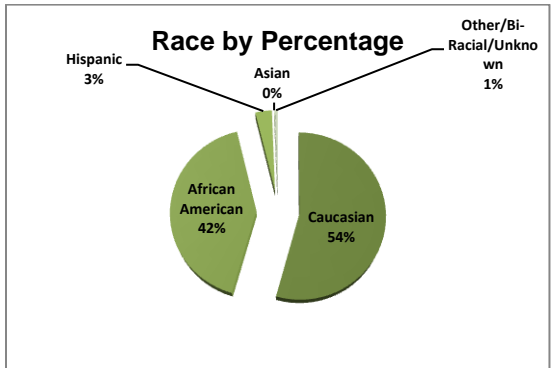
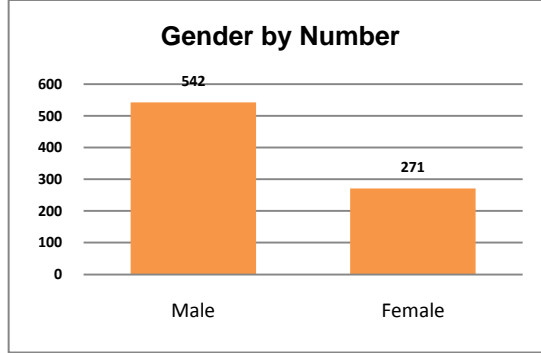
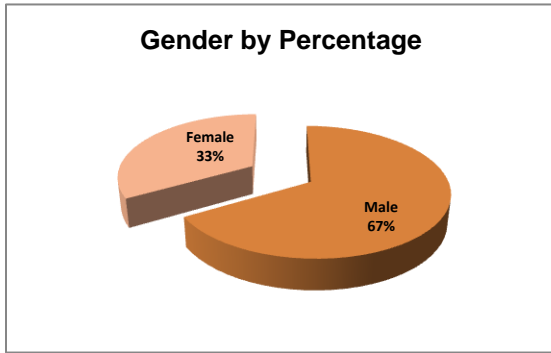


To date this year, there have been 1,669 other crimes, up from 1,010 last February, a 65% increase. The largest increase occurred, similar to above, in the all other offenses area ( $n = 1,503$ ), which accounts for a 82% increase.



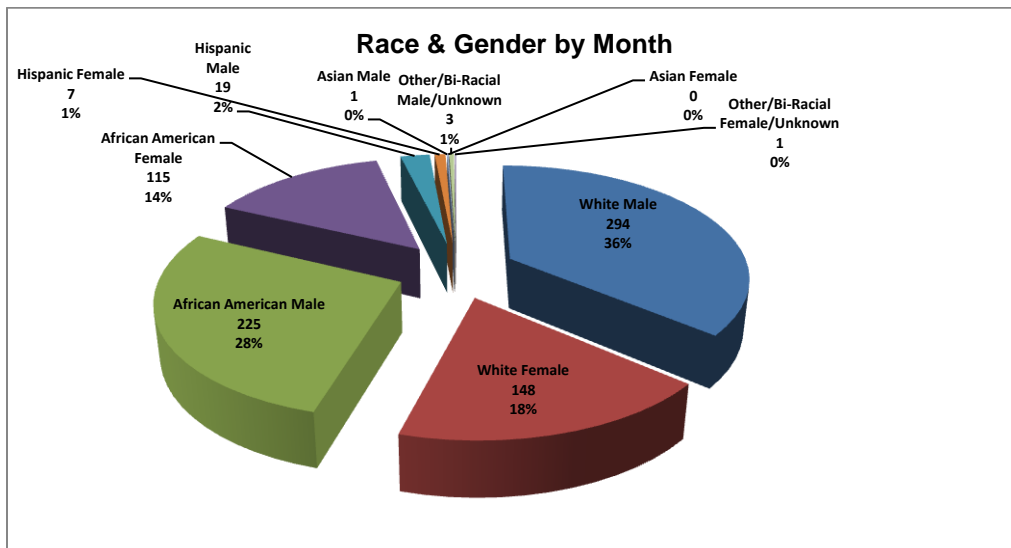
### Arrest Demographics

This section will break down race and gender for the 813 arrests this month. The majority of offenders have been male ( $n=542$ ), as opposed to female ( $n=271$ ) and Caucasian ( $n=442$ ) and African American ( $n=340$ ) as opposed to Hispanic ( $n=26$ ), Asian ( $n=1$ ), or other/unknown/bi-racial ( $n=4$ ).



\*Although the chart indicates a 0% for Asian (n = 1), the percentage is so small that excel rounds it to 0%.

Caucasian males make up the majority of offenders for the month of February, totaling 36% (n = 294)%. African American males account for 28% (n = 225) of the offenders this month. White females make up 18% (n = 148) and African American females make up 14% (n = 115). The remaining 4% is made up of Hispanic males and females, and 1 Asian male. This distribution can be reviewed in the pie chart below.





## Emergency 911

Also known as Public Safety Answering Point (PSAP), the Emergency 911 Division is responsible for answering all calls from public for emergency assistance, accessing the needed information to best assist, and then assigning the most efficient and effective emergency response. In addition, this division is responsible for setting priority call dispatching to field units including Police, Fire, and EMS. Emergency 911 also maintains all records for radio logs, calls for service, and other emergency service data collections.

Calls by Type	This Month	This Month Last Year	YTD	Last YTD	Change By Month	Change YTD
Land Line	815	964	1,649	2,108	-15%	-22%
Cell Phone	3,099	3,319	6,149	7,127	-7%	-14%
Admin Lines	14,555	15,673	30,279	34,487	-7%	-12%
<b>TOTALS</b>	<b>18,469</b>	<b>19,956</b>	<b>38,077</b>	<b>43,722</b>	<b>-7%</b>	<b>-13%</b>

Calls by Agency	This Month	This Month Last Year	YTD	Last YTD	Change By Month	Change YTD
Jonesboro PD Calls	5,443	7,545	11,261	10,468	-28%	8%
Craighead Cty Sheriff	882	1,156	1,817	1,966	-24%	-8%
Jonesboro Fire Dpt - dispatch	141	84	252	0	68%	N/C
Jonesboro Fire Dpt - Med Asst	104	343	228	706	-70%	-68%
Craighead Cty - Fire	55	78	111	180	-29%	-38%
Craighead Cty - 1st Responder	83	86	165	199	-3%	-17%
Emerson Ambulance	206	227	415	453	-9%	-8%
Medic One	259	330	562	630	-22%	-11%
Air Evac	0	0	0	0	N/C	N/C
Coroner	2	4	4	5	-50%	-20%
ARK State Police	18	9	31	21	100%	48%
Jonesboro Animal Control	58	29	116	45	100%	158%
Wreckers Called	156	172	329	324	-9%	2%
<b>TOTALS</b>	<b>7,407</b>	<b>10,063</b>	<b>15,291</b>	<b>14,997</b>	<b>-26%</b>	<b>2%</b>

Calls by Municipality	This Month	This Month Last Year	YTD	Last YTD	Change By Month	Change YTD
Bay PD	83	144	203	330	-42%	-38%
Bono PD	134	190	281	361	-29%	-22%
Brookland PD	194	206	400	456	-6%	-12%
Caraway PD	84	51	187	107	65%	75%
Cash PD	107	24	187	59	346%	217%
Egypt PD	3	17	15	41	-82%	-63%
Lake City PD	128	77	246	169	66%	46%
Monette PD	110	142	237	292	-23%	-19%
<b>TOTALS</b>	<b>843</b>	<b>851</b>	<b>1,756</b>	<b>1,815</b>	<b>-1%</b>	<b>-3%</b>

## Uniform Patrol Division

The UPD is responsible for responding to calls into the Emergency – 911 Division by civilians and are normally the first responders. Jonesboro is divided into 6 patrol districts. Officers from UPD are assigned to a district and work the same district every shift. In addition, when a Traffic Officer is not available, a UPD Officer will respond to traffic accidents and assist in directing traffic when necessary.

Incidents	This Month	This Month Last Year	YTD	Last YTD	Change By Month	Change YTD
Street Accidents	55	127	113	216	-57%	-48%
Private Property Accidents	42	52	60	94	-19%	-36%
Traffic Citations	774	596	1,637	1,222	30%	34%
DWI	22	18	45	41	22%	10%
Mis. Arrests	1,311	1,299	2,917	2,618	1%	11%
Felony Arrests	123	111	255	229	11%	11%
Value of Asstes Seized					N/C	N/C
Drug Arrests					N/C	N/C
Public Intoxication Arrests	13	10	18	17	30%	6%
Calls For Service	6,049	6,020	12,419	13,072	0%	-5%
Alarms	159	139	376	437	14%	-14%
Parking Citations	4	2	8	3	100%	167%
Written Warnings	638	396	1,221	919	61%	33%
<b>TOTALS</b>	<b>9,190</b>	<b>8,770</b>	<b>19,069</b>	<b>18,868</b>	<b>5%</b>	<b>1%</b>
Patrol Miles	52,482	54,082	113,470	119,520	-3%	-5%
Hours Worked	8,182	8,771	17,613	18,849	-7%	-7%

### Prowl

The Prowl unit is a uniformed street crimes unit specializing in criminal patrol, narcotics enforcement, gang investigation, and prostitution activity. The unit conducts directed patrols, investigates citizen complaints of street-level criminal activity, and directly assists the 2<sup>nd</sup> Judicial Drug Task Force. PROWL also assists any division within the Jonesboro Police Department at any time when needed.

Incidents	This Month	This Month Last Year	YTD	Last YTD	Change By Month	Change YTD
Street Accidents	0	0	0	0	N/C	N/C
Private Property Accidents	0	0	1	0	N/C	N/C
Traffic Citations	22	12	45	16	83%	181%
DWI	1	1	1	1	0%	0%
Mis. Arrests	137	50	183	111	174%	65%
Felony Arrests	26	33	49	44	-21%	11%
Drug Arrests	29	32	50	38	-9%	32%
Value of Asstes Seized	2,849	680	3,249	680	319%	378%
Public Intoxication Arrests	0	0	0	0	N/C	N/C
Calls For Service	89	35	190	63	154%	202%
Alarms	0	0	0	0	N/C	N/C
Parking Citations	0	0	0	0	N/C	N/C
Written Warnings	10	2	18	10	400%	80%
Assists	0	0	0	0	N/C	N/C
<b>TOTALS</b>	<b>3,163</b>	<b>845</b>	<b>3,786</b>	<b>963</b>	<b>274%</b>	<b>293%</b>
Value of Drugs Seized	\$18,535	\$44,160	\$21,975	\$45,860	-58%	-52%
Patrol Miles	4,750	4,270	10,000	8,020	11%	25%

### Criminal Investigative Division

The CID is responsible for conducting follow-up investigations into criminal acts reported to the Jonesboro Police Department. The primary goal is to collect and present evidence that conclusively leads to a successful arrest. Additionally, CID is charged with clearing additional crimes, recovering stolen property, preventing additional crimes, and gathering intelligence information.

Investigations	This Month	This Month Last Year	YTD	Last YTD	Change By Month	Change YTD
Criminal Investigations Assigned	53	96	124	176	-45%	-30%
Criminal Investigations Closed	54	81	176	159	-33%	11%
Cleared by Arrests	30	42	101	86	-29%	17%
Unfounded	6	16	16	22	-63%	-27%
Execeptionally Cleared	9	22	19	40	-59%	-53%
Filed With Prosecutors Office	5	1	29	4	400%	625%
<b>TOTALS</b>	<b>157</b>	<b>258</b>	<b>465</b>	<b>487</b>	<b>-39%</b>	<b>-5%</b>

Crimes Against Persons	This Month	This Month Last Year	YTD	Last YTD	Change By Month	Change YTD
Criminal Investigations Assigned	13	17	24	42	-24%	-43%
Criminal Investigations Closed	15	18	29	40	-17%	-28%
Cleared by Arrests	12	9	23	25	33%	-8%
Unfounded	0	4	2	5	-100%	-60%
Execeptionally Cleared	3	4	3	9	-25%	-67%
Filed With Prosecutors Office	0	1	1	1	-100%	0%
<b>TOTALS</b>	<b>43</b>	<b>53</b>	<b>82</b>	<b>122</b>	<b>-19%</b>	<b>-33%</b>

Property Crimes	This Month	This Month Last Year	YTD	Last YTD	Change By Month	Change YTD
Criminal Investigations Assigned	34	68	84	120	-50%	-30%
Criminal Investigations Closed	27	52	120	98	-48%	22%
Cleared by Arrests	16	33	72	60	-52%	20%
Unfounded	3	9	9	13	-67%	-31%
Execeptionally Cleared	6	10	15	23	-40%	-35%
Filed With Prosecutors Office	2	0	24	2	N/C	1100%
<b>TOTALS</b>	<b>88</b>	<b>172</b>	<b>324</b>	<b>316</b>	<b>-49%</b>	<b>3%</b>

Crimes Against Children	This Month	This Month Last Year	YTD	Last YTD	Change By Month	Change YTD
Criminal Investigations Assigned	2	8	9	9	-75%	0%
Criminal Investigations Closed	8	7	16	10	14%	60%
Cleared by Arrests	2	1	6	2	100%	200%
Unfounded	3	3	5	4	0%	25%
Execeptionally Cleared	0	3	1	3	-100%	-67%
Filed With Prosecutors Office	3	0	4	1	N/C	300%
<b>TOTALS</b>	<b>18</b>	<b>22</b>	<b>41</b>	<b>29</b>	<b>-18%</b>	<b>41%</b>

### Warrants

The Warrants Division is responsible for serving warrants, criminal summonses, and subpoenas that are issued by the District Court. On city court days, the Warrants Division provides a bailiff for court and a transport officer. In addition, this Division is responsible for transporting wanted persons arrested in other jurisdictions back to Jonesboro. The STEP program operates within this

division and is a grant-funded operation in which officers can get paid overtime to enforce the safety belt law.

The warrants division collected a total of \$28,331.42 in warrants this month. They issued 1,196 and served 2,064 warrants this month.

Arrests	This Month	This Month Last Year	YTD	Last YTD	Change By Month	Change YTD
Misdemeanor	1013	848	1995	1596	19%	25%
Felony	1	1	2	1	0%	100%
<b>Total Arrests</b>	<b>1014</b>	<b>849</b>	<b>1997</b>	<b>1597</b>	<b>19%</b>	<b>25%</b>

Warrants by Activity	This Month	This Month Last Year	YTD	Last YTD	Change By Month	Change YTD
Subpoenas	434	340	1002	861	28%	16%
Commitments	4	4	4	3	0%	33%
Traffic Citations			2		N/C	N/C
Complaints		1		6	-100%	-100%
Assist					N/C	N/C
Alarms					N/C	N/C

Hours by Activity	This Month	This Month Last Year	YTD	Last YTD	Change By Month	Change YTD
SI Criminal	167.37	159	390.5	253.95	5%	54%
Court	127.33	78.5	249.83	137.5	62%	82%
Prisoner Transport	21.67	62.5	34.34	219.33	-65%	-84%

Hours Worked	This Month	This Month Last Year	YTD	Last YTD	Change By Month	Change YTD
Regular Hours Worked	607	531	1202	1173	14%	2%
Overtime Hours Worked	2	8.83	8.5	18.25	-77%	-53%
<b>TOTAL Hours Worked</b>	<b>609</b>	<b>539.83</b>	<b>1210.5</b>	<b>1191.25</b>	<b>13%</b>	<b>2%</b>

Mileage	This Month	This Month Last Year	YTD	Last YTD	Change By Month	Change YTD
<b>Total Mileage</b>	<b>2755</b>	<b>2136</b>	<b>5439</b>	<b>4917</b>	<b>29%</b>	<b>11%</b>

STEP	This Month	This Month Last Year	YTD	Last YTD	Change By Month	Change YTD
DWI Arrest	1	2	1		-50%	N/C
DUI Arrest					N/C	N/C
Traffic Citations	61	62	143	153	-2%	-7%
Felony Arrests					N/C	N/C
Drug Arrests					N/C	N/C
<b>Hours Worked</b>	<b>124.5</b>	<b>103</b>	<b>251.5</b>	<b>224</b>	<b>21%</b>	<b>12%</b>
<b>Miles Driven</b>	<b>838</b>	<b>537</b>	<b>1860</b>	<b>1866</b>	<b>56%</b>	<b>0%</b>

### Drug Task Force

The DTF is responsible for investigating major drug traffickers in the area, including all types of illegal drugs. They work closely with local, state, and federal agencies to eradicate drugs from the community.

INVESTIGATIONS	This Month	This Month Last Year	YTD	Last YTD	Change By Month	Change YTD
Opened	29	33	58	52	-12%	12%
Closed	22	24	41	46	-8%	-11%
<b>TOTALS</b>	<b>29</b>	<b>37</b>	<b>66</b>	<b>64</b>	<b>-22%</b>	<b>3%</b>

With Nexus to Jonesboro	This Month	This Month Last Year	YTD	Last YTD	Change By Month	Change YTD
Opened	27	33	49	59	-18%	-17%
Closed		0		0	N/C	N/C
<b>TOTALS</b>	<b>27</b>	<b>33</b>	<b>49</b>	<b>59</b>	<b>-18%</b>	<b>-17%</b>

Outside Jonesboro (No Known Nexus)	This Month	This Month Last Year	YTD	Last YTD	Change By Month	Change YTD
Opened	1	0	2	2	N/C	0%
Closed	0	0		0	N/C	N/C
<b>TOTALS</b>	<b>1</b>	<b>0</b>	<b>2</b>	<b>2</b>	<b>N/C</b>	<b>0%</b>

ASSISTANCE RENDERED	This Month	This Month Last Year	YTD	Last YTD	Change By Month	Change YTD
Assist to Outside Agencies	4	0	8	3	N/C	167%
Assist to Jonesboro UPD/CID	10	20	22	31	-50%	-29%

ARRESTS	This Month	This Month Last Year	YTD	Last YTD	Change By Month	Change YTD
Miscellaneous	5	7	12	13	-29%	-8%
Felony	39	24	77	49	63%	57%
Marijuana	5	3	9	7	67%	29%
Cocaine	3	1	5	1	200%	400%
Crack Cocaine	3	3	6	7	0%	-14%
Methamphetamine/ICE	3	4	11	11	-25%	0%
LSD	0	0	0	0	N/C	N/C
Extasy (MDMA or Other Designer Drug)	0	2	1	2	-100%	-50%
Perscription	1	8	4	11	-88%	-64%
Opiates (Heroin,Opium)	0	0	0	0	N/C	N/C
Labs	7	2	7	6	250%	17%
All Other Drug Offenses	0	1	0	1	-100%	-100%

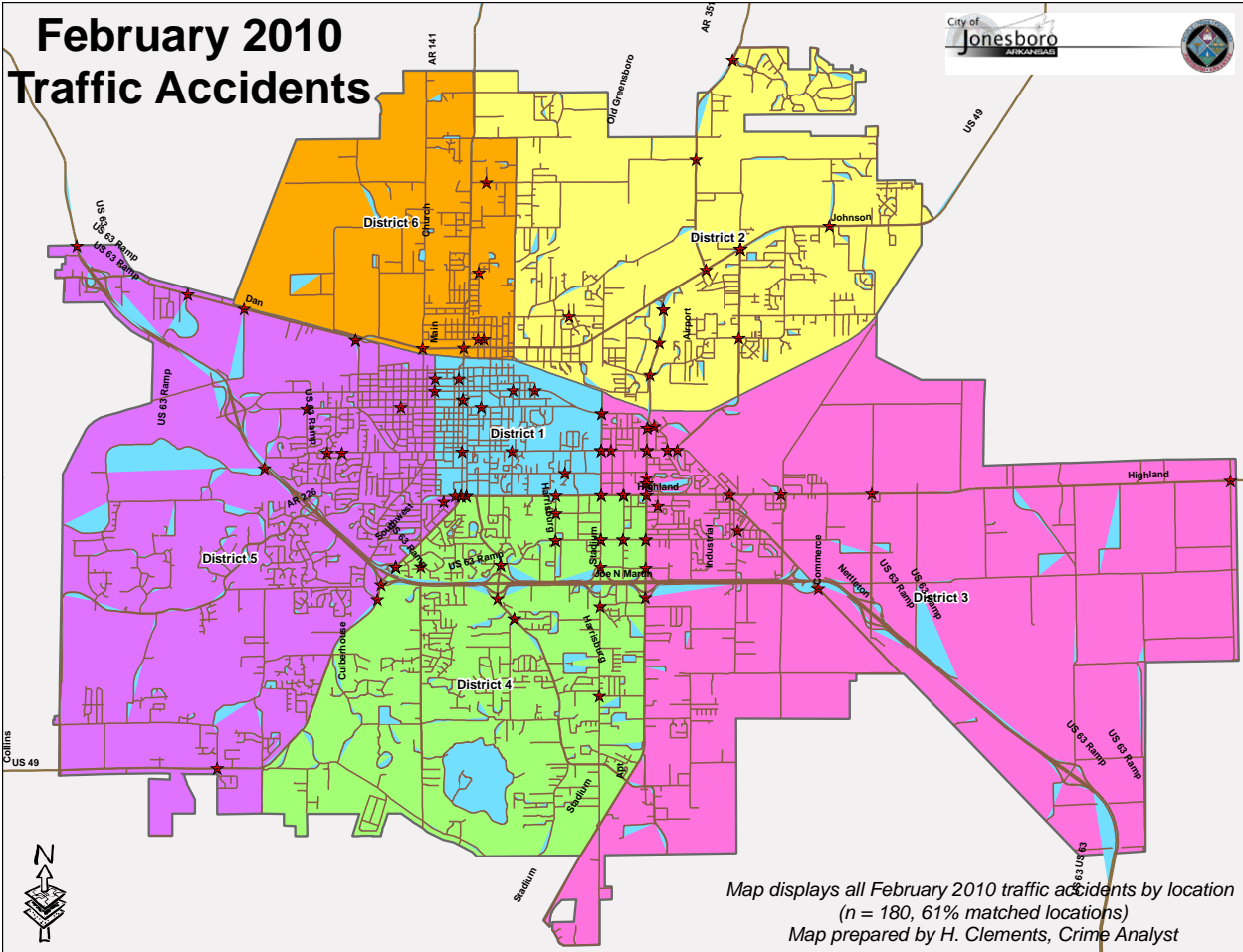
ASSET FORFEITURE	This Month	This Month Last Year	YTD	Last YTD	Change By Month	Change YTD
Vehicles Seized(No.)	0	0	0	1	N/C	-100%
Value of Assets Seized(Includes Value of vehicles)	\$3,000	\$2,145	\$3,000	\$9,845	40%	-70%
Asset Value Awarded to Jonesboro PD (State)		\$0	\$0	\$0	N/C	N/C
Asset Value Awarded to Jonesboro PD (Federal)		\$0	\$0	\$0	N/C	N/C
Asset Value Awarded to Jonesboro PD (Total)		\$0	\$0	\$0	N/C	N/C

ARRESTS DEMOGRAPHY	This Month	This Month Last Year	YTD	Last YTD	Change By Month	Change YTD
White	16	13	29	29	23%	0%
African American	8	12	13	18	-33%	-28%
Latino	0	1	6	2	-100%	200%
Asain	0	0	1	0	N/C	N/C
Other/Bi-Racial	0	0	0	0	N/C	N/C
Male	16	16	34	28	0%	21%
Female	3	10	8	12	-70%	-33%
White Male	12	6	21	16	100%	31%
White Female	3	7	8	10	-57%	-20%
African American Male	9	9	14	15	0%	-7%
African American Female	0	3	0	4	-100%	-100%
Latino Male	0	1	5	2	-100%	150%
Latino Female	0	0	0	0	N/C	N/C
Asain Male	0	0	1	0	N/C	N/C
Asain Female	0	0	0	0	N/C	N/C
Other/Bi-Racial Male	0	0	0	0	N/C	N/C
Other/Bi-Racial Female	0	0	0	0	N/C	N/C

**Traffic**

Comprised of three motor units and three Chargers, the Traffic Enforcement Unit responds to traffic accidents and provides increased enforcement in particularly challenging areas. This unit also provides extra coverage for specific congestion problems and special events in the community. Last, they work details targeting specific issues, such as DWI enforcement and traffic safety checkpoints.

Incidents	This Month	This Month Last Year	YTD	Last YTD	Change By Month	Change YTD
Street Accidents	117	114	254	244	3%	4%
Private Property Accidents	27	46	50	87	-41%	-43%
Traffic Citations	269	213	636	479	26%	33%
DWI	3	3	10	3	0%	233%
Mis. Arrests	19	15	46	37	27%	24%
Felony Arrests	5	1	7	2	400%	250%
Value of Asstes Seized	0	0	0	0	N/C	N/C
Drug Arrests	0	0	0	0	N/C	N/C
Public Intoxication Arrests	0	0	0	0	N/C	N/C
Calls For Service	243	210	531	458	16%	16%
Alarms	0	1	1	8	-100%	-88%
Parking Citations	0	7	0	22	-100%	-100%
Written Warnings	69	2	148	5	3350%	2860%
<b>TOTALS</b>	<b>752</b>	<b>612</b>	<b>1683</b>	<b>1345</b>	<b>23%</b>	<b>25%</b>
Patrol Miles	5,143	4,130	10,532	9,390	25%	12%
Hours Worked	728.5	645	1522.5	1533.5	13%	-1%



### Parking Enforcement

The Parking Enforcement Division is responsible for enforcing parking laws in the downtown area. This service provides a safe and convenient parking situation for the public.

CITATIONS ISSUED	This Month	This Month Last Year	YTD	Last YTD	Change By Month	Change YTD
Citations	35	88	71	54	-60%	31%
Verbal Warnings	0		0	0	N/C	N/C

MINUTES BY ACTIVITY	This Month	This Month Last Year	YTD	Last YTD	Change By Month	Change YTD
Office	525	1,040	1,085	4,210	-50%	-74%
Admin(Non-Office)	780	620	2,090	670	26%	212%
Community	0	0	0	300	N/C	-100%
Training	0	0	0	0	N/C	N/C
Patrol	3,435	4,070	6,755	5,530	-16%	22%

## Animal Control

The Animal Control Division is responsible for educating the public on safe and humane issues regarding animal treatment, enforcing all animal laws and ordinances, assisting the public in resolving animal issues, and protecting the safety and welfare of the citizens and animals in this community.

Incidents	This Month	This Month Last Year	YTD	Last YTD	Change By Month	Change YTD
Barking Complaints	2	3	6	9	-33%	-33%
Bite Reports	4	3	9	10	33%	-10%
Door Hangers	20	25	43	54	-20%	-20%
Welfare Checks	48	54	125	105	-11%	19%
Advised of Rights	204	227	385	505	-10%	-24%
Incident Reports	6	8	20	12	-25%	67%
Gone on Arrival	36	75	70	128	-52%	-45%
Complaints	578	404	1,162	807	43%	44%
Desk Complaints	984	686	1,718	1,459	43%	18%
Captured Dogs	126	96	248	268	31%	-7%
Captured Cats	4	1	21	3	300%	600%
Captured Wildlife	8	16	16	24	-50%	-33%
Chemical Captures	6	8	14	17	-25%	-18%
Traps	13	8	19	17	63%	12%
Deceased Animals	66	53	144	102	25%	41%
Assist J.P.D.	0	2	14	7	-100%	100%
Assist C.S.O.	0	1	0	1	-100%	-100%
Public Relations	436	150	851	335	191%	154%
CITATIONS ISSUED	29	16	44	79	81%	-44%
WARNINGS ISSUED	37	15	69	36	147%	92%
Physical Arrests	0	2	0	2	-100%	-100%
City Warrants Served	0	3	0	3	-100%	-100%
County Warrants Served	0	0	0	0	N/C	N/C
Euthanized	41	74	90	117	-45%	-23%
Euthanized for Humane Society	0	16	0	16	-100%	-100%
Deceased Animals Landfill lbs.	3,640	5,360	6,920	8,560	-32%	-19%
Wildlife Euthanized	8	16	16	24	-50%	-33%
Sent to Rescue Centers	5		27		N/C	N/C
Adoptions	50		82		N/C	N/C
Miles Driven	7,339	9,894	14,228	18,791	-26%	-24%

## Fleet Maintenance

The Fleet Maintenance is responsible for all of the police vehicle maintenance upkeep, cleanliness, and purchasing. In addition, this Division handles most of the purchasing of equipment, supplies, and uniforms for all of the Police Department.



Repair Costs by Model Year	This Month	This Month Last Year	YTD	Last YTD	Change By Month	Change YTD
95-99	\$0.00	\$69.77	\$0.00	\$69.77	-100%	-100%
2000	\$195.02	\$0.00	\$195.02	\$0.00	N/C	N/C
2001	\$21.40	\$0.00	\$21.40	\$0.00	N/C	N/C
2002	\$0.00	\$0.00	\$2,054.11	\$0.00	N/C	N/C
2003	\$0.00	\$15.73	\$0.00	\$139.14	-100%	-100%
2004	\$994.37	\$749.34	\$2,487.16	\$1,172.89	33%	112%
2005	\$1,463.36	\$15.73	\$2,335.51	\$26.53	9203%	8703%
2006	\$6,093.99	\$494.17	\$8,332.52	\$1,154.16	1133%	622%
2007	\$221.66	\$229.24	\$1,530.59	\$757.08	-3%	102%
2008	\$0.00	\$37.80	\$0.00	\$37.80	-100%	-100%
2009	\$0.00	n/a	\$0.00	n/a	N/C	N/C
<b>TOTALS</b>	<b>\$8,989.80</b>	<b>\$1,611.78</b>	<b>\$16,956.31</b>	<b>\$3,357.37</b>	<b>458%</b>	<b>405%</b>

Routine Preventative Maintenance by Model Year	This Month	This Month Last Year	YTD	Last YTD	Change By Month	Change YTD
95-99	\$0.00	\$0.00	\$0.00	\$0.00	N/C	N/C
2000	\$0.00	\$75.74	\$0.00	\$115.74	-100%	-100%
2001	\$20.00	\$695.94	\$40.00	\$768.33	-97%	-95%
2002	\$0.00	\$0.00	\$0.00	\$0.00	N/C	N/C
2003	\$20.00	\$20.00	\$80.00	\$548.13	0%	-85%
2004	\$700.51	\$724.21	\$1,144.86	\$1,497.01	-3%	-24%
2005	\$437.25	\$738.32	\$603.75	\$903.32	-41%	-33%
2006	\$1,771.16	\$1,462.49	\$2,990.87	\$1,928.49	21%	55%
2007	\$871.61	\$1,312.96	\$3,994.65	\$1,842.42	-34%	117%
2008	\$20.00	\$60.00	\$150.00	\$100.00	-67%	50%
2009	\$49.00	n/a	\$110.02	n/a	N/C	N/C
<b>TOTALS</b>	<b>\$3,889.53</b>	<b>\$5,089.66</b>	<b>\$9,114.15</b>	<b>\$7,703.44</b>	<b>-24%</b>	<b>18%</b>

## Records

The Records Division is responsible for providing administrative and clerical support to the department. Major responsibilities include entering the accident and incident reports and tickets into the records database management system, assisting the general public for report requests, performing criminal backgrounds, serving as a switchboard at times, performing validations, and setting up and managing the payment plans out of court.

RECORDS	This Month	This Month Last Year	YTD	Last YTD	Change By Month	Change YTD
Incident/Arrest Reports Processed	1,086	836	2,268	1,803	30%	26%
Accident Reports Processed	182	224	367	428	-19%	-14%
Citations Processed	3,645	2,902	7,747	6,128	26%	26%
Warnings Processed	333	255	607	595	31%	2%
Backgrounds	25	5	32	12	400%	167%
Fingerprints	88	64	227	146	38%	55%
Photos	0	0	0	0	N/C	N/C
Accident Requests	91	123	186	242	-26%	-23%
Accident Requests Online	135	166	279	309	-19%	-10%
<b>TOTALS</b>	<b>5,585</b>	<b>4,575</b>	<b>11,713</b>	<b>9,663</b>	<b>22%</b>	<b>21%</b>

## Professional Standards

The Office of Professional Standards, a unit within Administration, is charged with the compilation and updating of an extensive set of policies and procedures and providing a general operations guideline and code of conduct for officers to follow. In the event that a member of the

public does experience a negative interaction with an officer, mechanisms are in place for them to lodge a complaint. All complaints are reviewed and investigations completed in a timely manner.

	This Month	This Month Last Year	YTD	Last YTD	Change By Month	Change YTD
Opened (TOTAL)	10	7	17	12	43%	42%
Closed	10	7	17	10	43%	70%
Inquiries	10	4	16	8	150%	100%
Formal Investigations	0	1	1	2	-100%	-50%
Sustained	9	2	14	5	350%	180%
Not-Sustained	0	1	1	1	-100%	0%
Exhonerated	0	0	1	2	N/C	-50%
Unfounded	1	1	1	1	0%	0%