
JPD Monthly Report

March 2010

Heather Clements,
Crime Analyst



Executive Summary

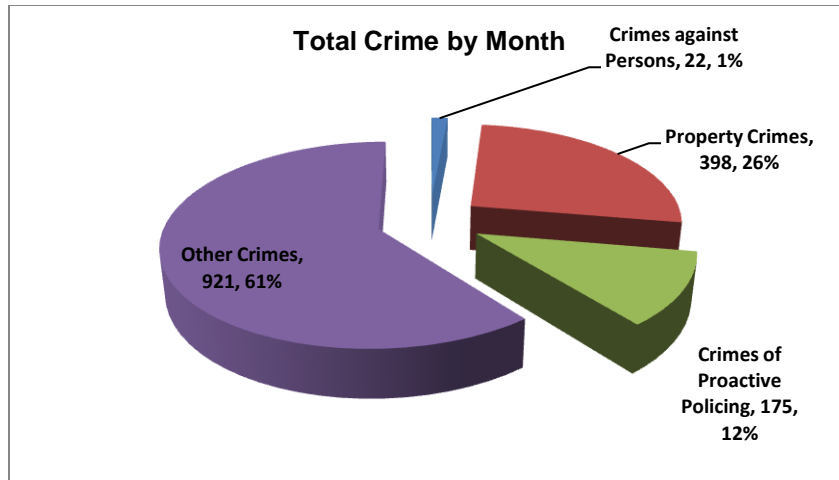
The purpose of the Jonesboro Police Department Monthly Report is to compile data into one integrated report for review, allowing for a seamless flow of information for better decision-making. After each department collates their monthly numbers and sends it to Crime Analysis, it is organized into sections of departmental data, analyzed and packaged, and finally disseminated to department heads, the Chief of Police, the City Mayor, and the City Council. Major sections include Crime Analysis, Emergency 911, Uniform Police Division, Prowl, Criminal Investigative Division, Warrants, Drug Task Force, Traffic, Parking Enforcement, Animal Control, Fleet Maintenance, Records, and Professional Standards.

Crime Analysis

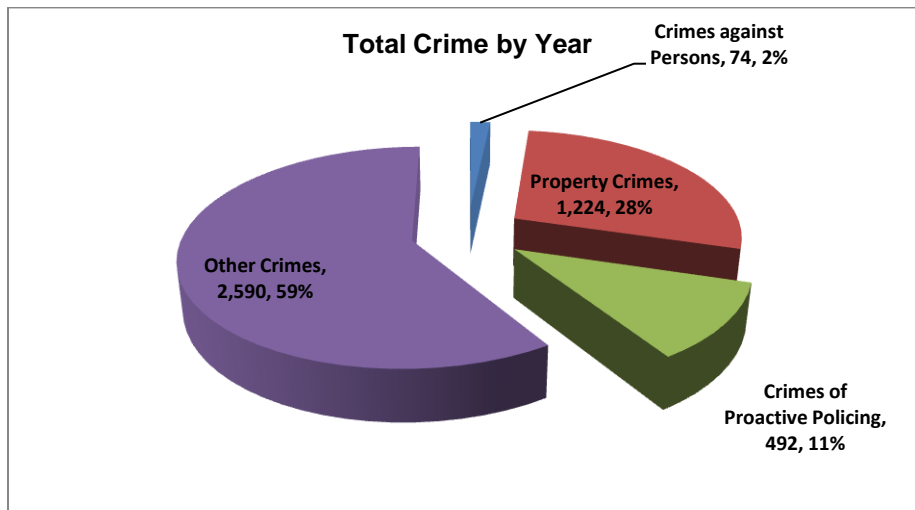
The Crime Analysis division consists of a Crime Analyst and an assistant. The Crime Analyst position is responsible for the analysis and dissemination of crime activity data and the collection and maintenance of crime intelligence information for the city of Jonesboro. Additionally, the Crime Analyst is charged with providing the department with current and accurate crime maps, presenting crime activity data to audiences of interest, and responding to requests for crime data from civilians and departmental staff. Data exported from this division is used by field agents for more effective, efficient policing, administration for improved staffing decisions, and the Mayor's office for community decision making and enhanced public relations. This section is broken down by 6 sections: total crime, crimes against persons, property crimes, crimes of proactive policing, other crimes, and arrest demographics.

Total Crime

The crime activity for this month is at a total of 1,516 offenses, up from 1,166 offenses last March, a 30% increase. Other crimes absorb the majority of this month's crime activity at 61% ($n = 921$). Property crimes fall in second place with 26% ($n = 398$). Following in third and fourth places are crimes of proactive policing at 12% ($n = 175$), and crimes against persons with only 1% ($n = 22$).

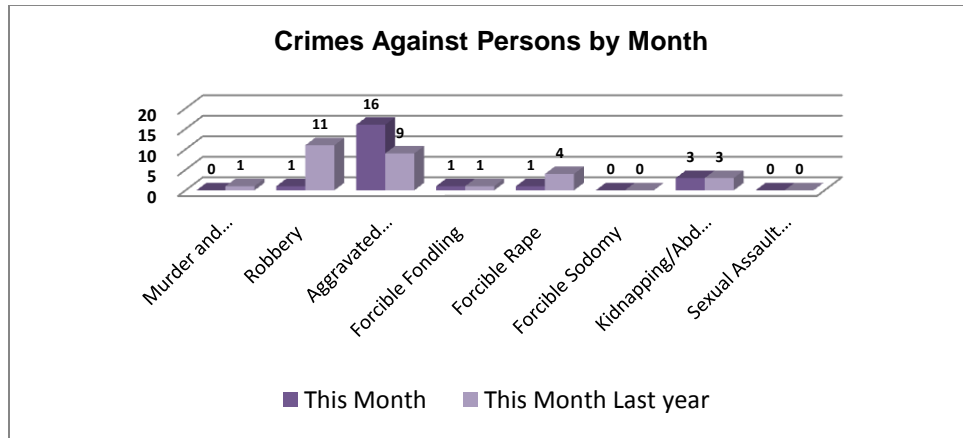


Year to date data includes January, February, and March data combined, of which there is a total of 4,380 offenses, up from 3,409 last March, a 28% increase. Again, other crimes has the highest percentage to total crimes at 59% ($n = 2,590$). Similar to this month's data, property crimes take second place at 28% ($n = 1,224$). Following are the crimes of proactive policing at 11% ($n = 492$) and crimes against persons at 2% ($n = 74$).

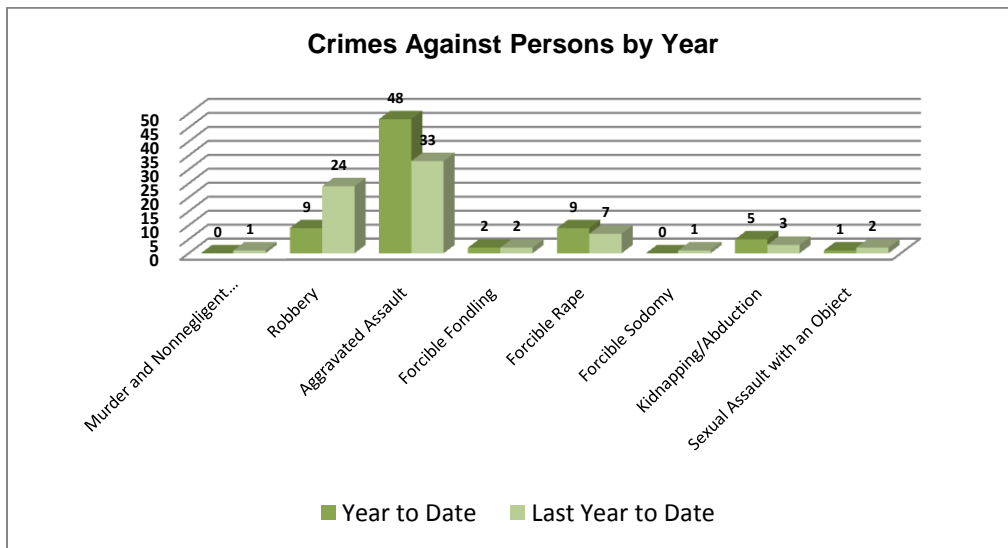


Crimes against Persons

There are 8 crimes that make up this section. There were a total of 22 offenses in this area this month, down from 29 last March, a 24% decrease. The following chart demonstrates this month's activity compared to March of last year's activity in all 8 areas. Significantly higher are the aggravated assaults up from 9 to 16, a 78% increase. Significantly lower are robberies, down from 11 to 1, a 91% decrease.

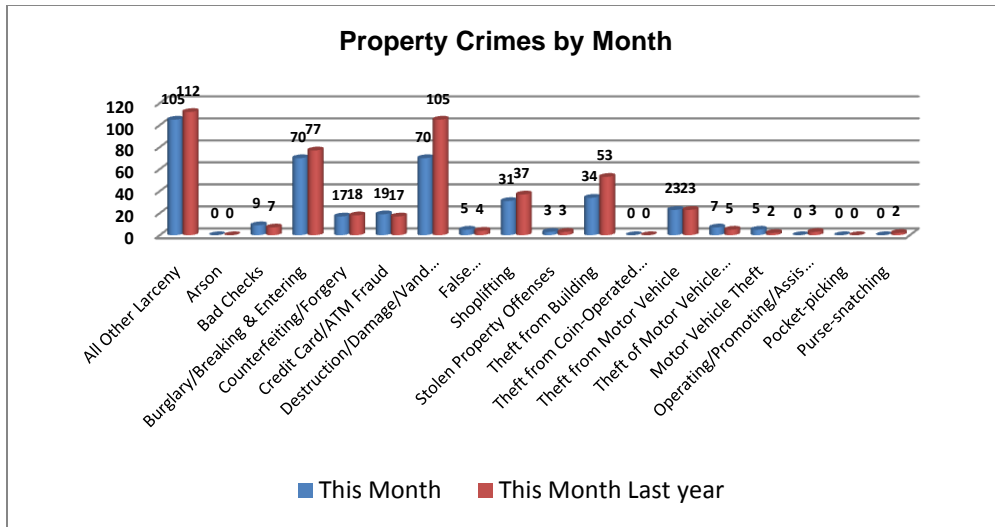


Below is a bar graph indicating the year to date data for crimes against persons. Total number of year to date crimes against persons is 74, up 1 from last year at this same time. Although year to date robberies are down 63%, aggravated assault offenses are up 45%.

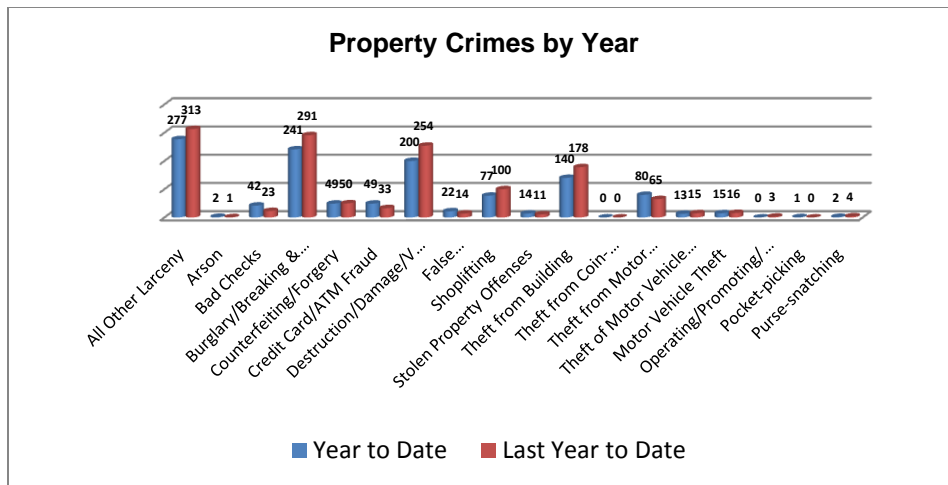


Property Crimes

This section displays the criminal activity for 18 crimes, all against property. This month, there were a total of 398 property crimes, down from 468 last February. This is an 15% decrease in property crimes from last March. Crimes in this category that are noticeably lower than last March are larceny, burglary, vandalism, shoplifting, and theft from buildings.

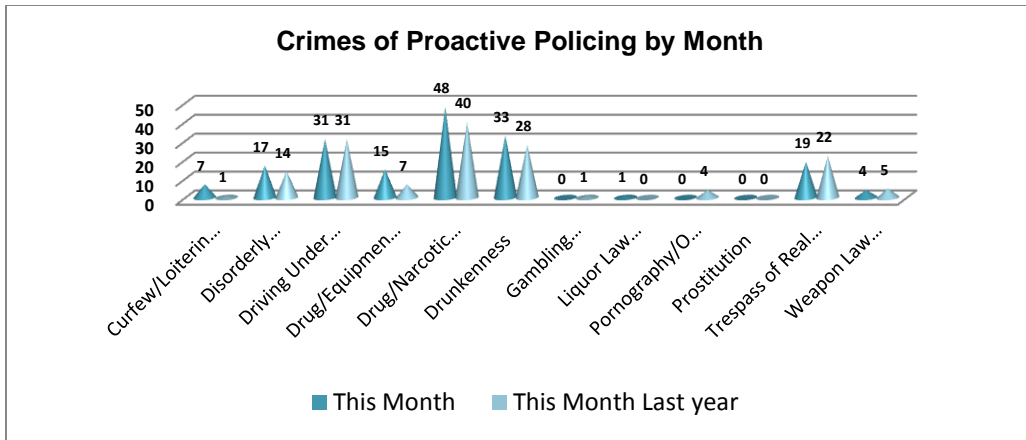


To date this year, 1,224 property offenses have occurred, down from 1,371 last year at this same time. This is a 11% decrease in property crimes from this time last year. Those crime areas that are down include larceny, burglary, vandalism, shoplifting, theft from buildings, theft of motor vehicle parts, and motor vehicle theft. A few crimes have increased, such as, bad checks, fraud, and theft from motor vehicle.

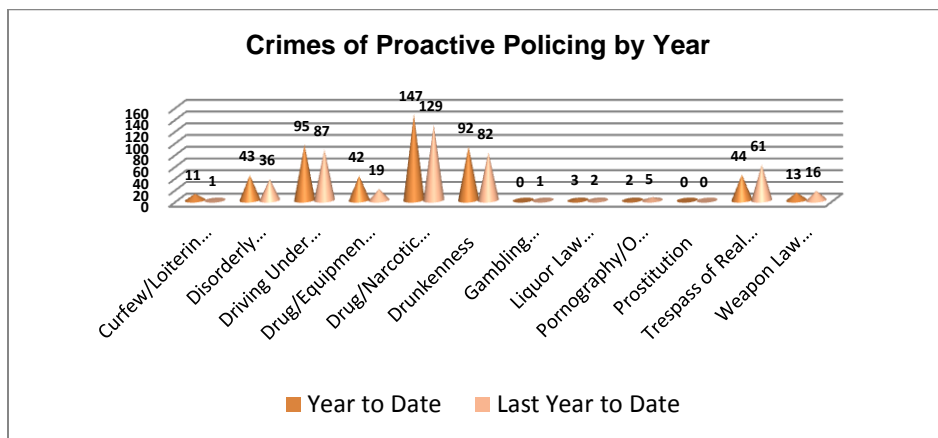


Crimes of Proactive Policing

Crimes of proactive policing are those crimes that result from police officers actively policing the streets to combat certain types of street crime. Twelve crimes fall under this category. A total of 175 offenses have occurred this month, a 14% increase from last March ($n = 153$). Curfew is up by 6 (from 1 to 7), drug/equipment violations are up to 15 from 7 (88%), drug/narcotic violations are up to 48 from 40 (12%), and drunkenness is up to 33 from 28 (14%). Among those categories that have decreased are pornography, trespassing, and weapon law violations.

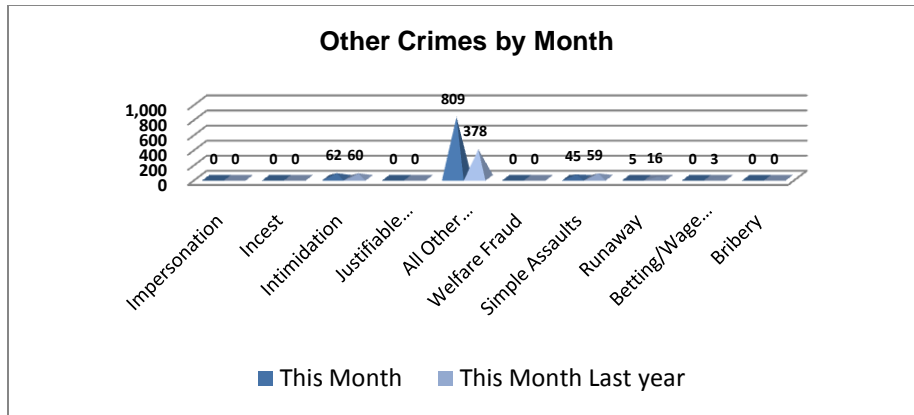


To date for the year, there have been 492 crimes of proactive policing. This is up from 439 last March, an 12% increase. Increases to date include curfew, disorderly conduct, DUI, drug/equipment violations, drug/narcotic violations, drunkenness, and liquor law violations. Decreases include gambling, pornography, trespassing, and weapon law violations.

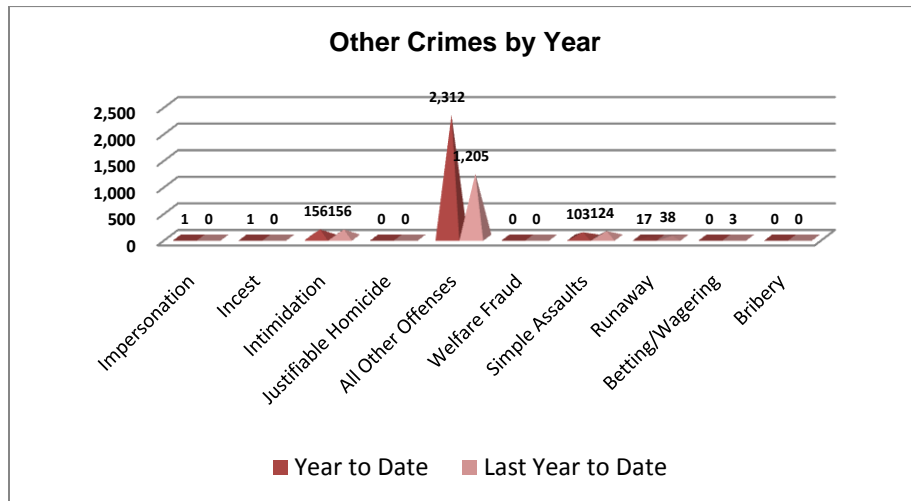


Other Crimes

There are 10 crimes that fall into the other crimes category. This month, there have been a total of 921 other crimes up from 516 last March, a 78% increase. The biggest change is a 114% increase in all other offenses. Significant decreases are simple assaults by 24% and a 69% decrease in runaways.

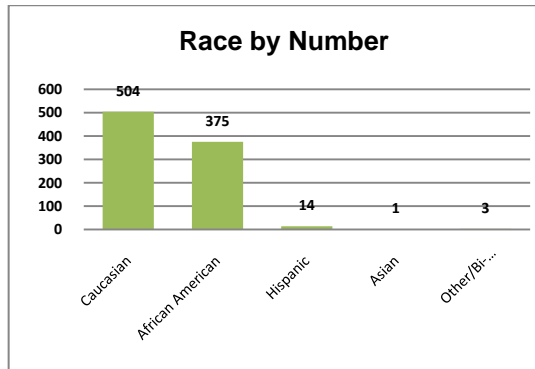
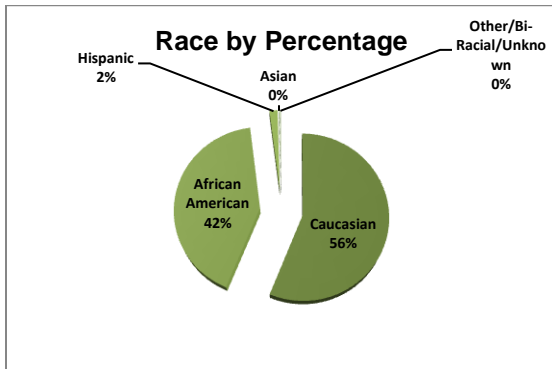
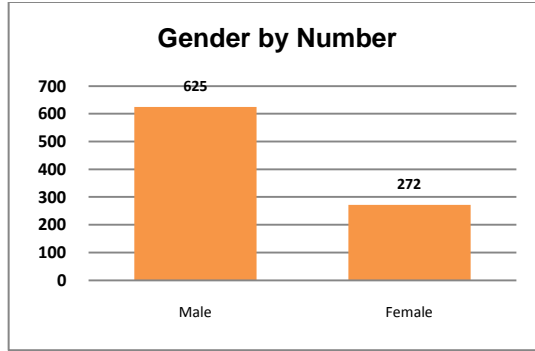
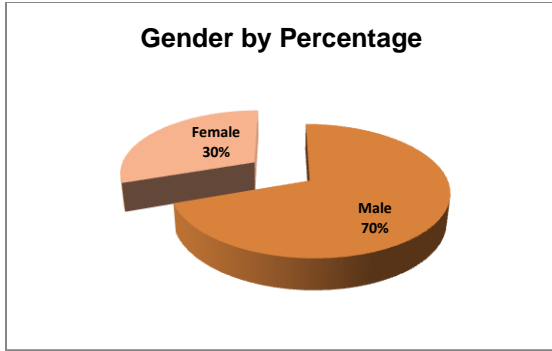


To date this year, there have been 2,590 other crimes, up from 1,526 last March, a 70% increase. The largest increase occurred, similar to above, in the all other offenses area ($n = 2,312$), which accounts for a 92% increase. Simple assaults decreased by 21, a 17% decrease.



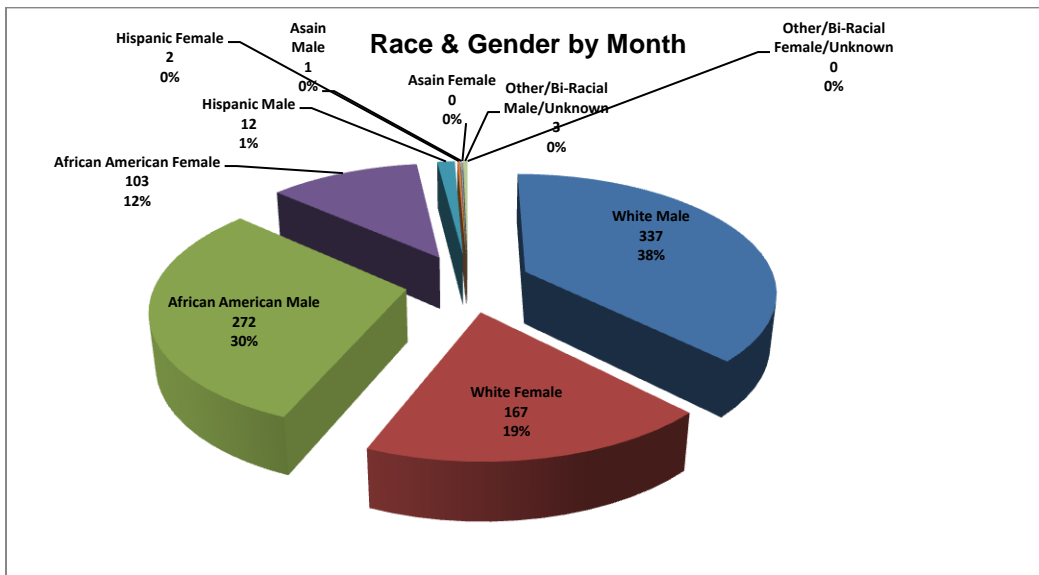
Arrest Demographics

This section will break down race and gender for the 897 arrests this month. The majority of offenders have been male ($n=625$), as opposed to female ($n=272$) and Caucasian ($n=504$) and African American ($n=375$) as opposed to Hispanic ($n=14$), Asian ($n=1$), or other/unknown/bi-racial ($n=3$).



*Although the chart indicates a 0% for Asian (n = 1, the percentage is so small that excel rounds it to 0%.

Caucasian males make up the majority of offenders for the month of March, totaling 38% (n = 337). African American males account for 30% (n = 272) of the offenders this month. White females make up 19% (n = 167) and African American females make up 12% (n = 103). The remaining 1% is made up of Hispanic males. This distribution can be reviewed in the pie chart below.



*Although the chart indicates a 0% for Asian males (n = 1) arrestees, the percentage is so small that excel rounds it to 0%.

Emergency 911

Also known as Public Safety Answering Point (PSAP), the Emergency 911 Division is responsible for answering all calls from public for emergency assistance, accessing the needed information to best assist, and then assigning the most efficient and effective emergency response. In addition, this division is responsible for setting priority call dispatching to field units including Police, Fire, and EMS. Emergency 911 also maintains all records for radio logs, calls for service, and other emergency service data collections.

Calls by Type	This Month	This Month Last Year	YTD	Last YTD	Change By Month	Change YTD
Land Line	894	978	2,552	3,057	-9%	-17%
Cell Phone	3,329	3,489	9,467	10,511	-5%	-10%
Admin Lines	15,049	17,557	45,336	51,466	-14%	-12%
TOTALS	19,272	22,024	57,355	65,034	-12%	-12%

Calls by Agency	This Month	This Month Last Year	YTD	Last YTD	Change By Month	Change YTD
Jonesboro PD Calls	6,370	7,849	17,630	21,154	-19%	-17%
Craighead Cty Sheriff	959	1,316	2,775	34,064	-27%	-92%
Jonesboro Fire Dpt - dispatch	157	156	460	510	1%	-10%
Jonesboro Fire Dpt - Med Asst	96	343	303	1,046	-72%	-71%
Craighead Cty - Fire	61	64	172	258	-5%	-33%
Craighead Cty - 1st Responder	61	104	226	300	-41%	-25%
Emerson Ambulance	258	138	673	589	87%	14%
Medic One	288	199	850	826	45%	3%
Air Evac	1	0	3	2	N/C	50%
Coroner	6	2	10	8	200%	25%
ARK State Police	9	6	40	38	50%	5%
Jonesboro Animal Control	52	12	168	35	333%	380%
Wreckers Called	193	285	522	720	-32%	-28%
TOTALS	8,511	10,474	23,832	59,550	-19%	-60%

Calls by Municipality	This Month	This Month Last Year	YTD	Last YTD	Change By Month	Change YTD
Bay PD	136	203	339	448	-33%	-24%
Bono PD	244	332	525	707	-27%	-26%
Brookland PD	232	231	632	711	0%	-11%
Caraway PD	91	53	278	161	72%	73%
Cash PD	64	77	251	178	-17%	41%
Egypt PD	14	24	29	65	-42%	-55%
Lake City PD	142	132	388	304	8%	28%
Monette PD	121	105	358	399	15%	-10%
TOTALS	1,044	1,157	2,800	2,973	-10%	-6%

Uniform Patrol Division

The UPD is responsible for responding to calls into the Emergency – 911 Division by civilians and are normally the first responders. Jonesboro is divided into 6 patrol districts. Officers from UPD are assigned to a district and work the same district every shift. In addition, when a Traffic Officer is not available, a UPD Officer will respond to traffic accidents and assist in directing traffic when necessary.

Incidents	This Month	This Month Last Year	YTD	Last YTD	Change By Month	Change YTD
Street Accidents	66	103	179	319	-36%	-44%
Private Property Accidents	32	44	92	138	-27%	-33%
Traffic Citations	937	665	2574	1887	41%	36%
DWI	20	22	65	63	-9%	3%
Mis. Arrests	1815	1383	4732	4001	31%	18%
Felony Arrests	175	102	430	331	72%	30%
Value of Asstes Seized					N/C	N/C
Drug Arrests					N/C	N/C
Public Intoxication Arrests	5	8	23	23	-38%	0%
Calls For Service	7202	7249	19621	20321	-1%	-3%
Alarms	198	216	574	653	-8%	-12%
Parking Citations	5	1	13	4	400%	225%
Written Warnings	737	495	1958	1414	49%	38%
TOTALS	11,192	10,288	30,261	29,154	9%	4%
Patrol Miles	58875	64982	172345	184502	-9%	-7%
Hours Worked	9405.17	9968	27018.17	28817.34	-6%	-6%

Prowl

The Prowl unit is a uniformed street crimes unit specializing in criminal patrol, narcotics enforcement, gang investigation, and prostitution activity. The unit conducts directed patrols, investigates citizen complaints of street-level criminal activity, and directly assists the 2nd Judicial Drug Task Force. PROWL also assists any division within the Jonesboro Police Department at any time when needed.

Incidents	This Month	This Month Last Year	YTD	Last YTD	Change By Month	Change YTD
Street Accidents	0	1	0	1	-100%	-100%
Private Property Accidents	0	0	1	0	N/C	N/C
Traffic Citations	41	8	86	24	413%	258%
DWI	0	0	1	1	N/C	0%
Mis. Arrests	128	18	311	129	611%	141%
Felony Arrests	22	23	71	67	-4%	6%
Drug Arrests	19	23	69	61	-17%	13%
Value of Asstes Seized	14779	21676	18028	22356	-32%	-19%
Public Intoxication Arrests	0	0	0	0	N/C	N/C
Calls For Service	66	52	256	115	27%	123%
Alarms	0	0	0	0	N/C	N/C
Parking Citations	0	0	0	0	N/C	N/C
Written Warnings	33	4	51	14	725%	264%
Assists	0	0	0	0	N/C	N/C
TOTALS	15,088	21,805	18,874	22,768	-31%	-17%
Value of Drugs Seized	\$2,900.00	\$11,130.00	\$24,857.00	\$56,990.00	-74%	-56%
Patrol Miles	5,300	4110	15300	12130	29%	26%

Criminal Investigative Division

The CID is responsible for conducting follow-up investigations into criminal acts reported to the Jonesboro Police Department. The primary goal is to collect and present evidence that conclusively leads to a successful arrest. Additionally, CID is charged with clearing additional crimes, recovering stolen property, preventing additional crimes, and gathering intelligence information.

Investigations	This Month	This Month Last Year	YTD	Last YTD	Change By Month	Change YTD
Criminal Investigations Assigned	91	101	215	277	-10%	-22%
Criminal Investigations Closed	110	61	286	220	80%	30%
Cleared by Arrests	55	29	156	115	90%	36%
Unfounded	10	11	26	33	-9%	-21%
Execeptionally Cleared	18	10	37	50	80%	-26%
Filed With Prosecutors Office	4	8	33	12	-50%	175%
TOTALS	288	220	753	707	31%	7%

Crimes Against Persons	This Month	This Month Last Year	YTD	Last YTD	Change By Month	Change YTD
Criminal Investigations Assigned	20	24	44	66	-17%	-33%
Criminal Investigations Closed	25	13	54	53	92%	2%
Cleared by Arrests	13	8	36	33	63%	9%
Unfounded	1	3	3	8	-67%	-63%
Execeptionally Cleared	9	1	12	10	800%	20%
Filed With Prosecutors Office	2	1	3	2	100%	50%
TOTALS	70	50	152	172	40%	-12%

Property Crimes	This Month	This Month Last Year	YTD	Last YTD	Change By Month	Change YTD
Criminal Investigations Assigned	66	64	150	184	3%	-18%
Criminal Investigations Closed	57	41	177	139	39%	27%
Cleared by Arrests	38	21	110	81	81%	36%
Unfounded	9	6	18	19	50%	-5%
Execeptionally Cleared	9	9	24	32	0%	-25%
Filed With Prosecutors Office	1	5	25	7	-80%	257%
TOTALS	180	146	504	462	23%	9%

Crimes Against Children	This Month	This Month Last Year	YTD	Last YTD	Change By Month	Change YTD
Criminal Investigations Assigned	1	7	10	16	-86%	-38%
Criminal Investigations Closed	5	4	21	14	25%	50%
Cleared by Arrests	4	0	10	2	N/C	400%
Unfounded	0	2	5	6	-100%	-17%
Execeptionally Cleared	0	0	1	3	N/C	-67%
Filed With Prosecutors Office	1	2	5	3	-50%	67%
TOTALS	11	15	52	44	-27%	18%

Warrants

The Warrants Division is responsible for serving warrants, criminal summonses, and subpoenas that are issued by the District Court. On city court days, the Warrants Division provides a bailiff for court and a transport officer. In addition, this Division is responsible for transporting wanted persons arrested in other jurisdictions back to Jonesboro. The STEP program operates within this

division and is a grant-funded operation in which officers can get paid overtime to enforce the safety belt law.

The warrants division collected a total of \$22,087.76 in warrants this month. They issued 3,149 and served 2,454 warrants this month.

Arrests	This Month	This Month Last Year	YTD	Last YTD	Change By Month	Change YTD
Misdemeanor	1059	860	3054	2456	23%	24%
Felony	2		4	1	N/C	300%
Total Arrests	1061	860	3058	2457	23%	24%

Warrants by Activity	This Month	This Month Last Year	YTD	Last YTD	Change By Month	Change YTD
Subpoenas	490	411	1492	1272	19%	17%
Commitments	5	6	9	9	-17%	0%
Traffic Citations			2		N/C	N/C
Complaints				6	N/C	-100%
Assist					N/C	N/C
Alarms					N/C	N/C

Hours by Activity	This Month	This Month Last Year	YTD	Last YTD	Change By Month	Change YTD
SI Criminal	193.17	155.67	583.67	409.62	24%	42%
Court	143.5	72	393.33	209.5	99%	88%
Prisoner Transport	38	126.17	72.34	345.5	-70%	-79%

Hours Worked	This Month	This Month Last Year	YTD	Last YTD	Change By Month	Change YTD
Regular Hours Worked	603.5	579	1805.5	1752	4%	3%
Overtime Hours Worked	3	12	11.5	30.25	-75%	-62%
TOTAL Hours Worked	606.5	591	1817	1782.25	3%	2%

Mileage	This Month	This Month Last Year	YTD	Last YTD	Change By Month	Change YTD
Total Mileage	3091	2688	8530	7605	15%	12%

STEP	This Month	This Month Last Year	YTD	Last YTD	Change By Month	Change YTD
DWI Arrest	1		2		N/C	N/C
DUI Arrest					N/C	N/C
Traffic Citations	252	130	395	283	94%	40%
Felony Arrests			1		N/C	N/C
Drug Arrests					N/C	N/C
Hours Worked	267.5	184	519	408	45%	27%
Miles Driven	1904	841	3764	2664	126%	41%

Drug Task Force

The DTF is responsible for investigating major drug traffickers in the area, including all types of illegal drugs. They work closely with local, state, and federal agencies to eradicate drugs from the community.

INVESTIGATIONS	This Month	This Month Last Year	YTD	Last YTD	Change By Month	Change YTD
Opened	42	45	100	97	-7%	3%
Closed	36	35	77	81	3%	-5%
TOTALS	48	46	114	110	4%	4%

With Nexus to Jonesboro	This Month	This Month Last Year	YTD	Last YTD	Change By Month	Change YTD
Opened	34	42	83	101	-19%	-18%
Closed		0		0	N/C	N/C
TOTALS	34	42	83	101	-19%	-18%

Outside Jonesboro (No Known Nexus)	This Month	This Month Last Year	YTD	Last YTD	Change By Month	Change YTD
Opened	4	0	6	2	N/C	200%
Closed	0	0		0	N/C	N/C
TOTALS	4	0	6	2	N/C	200%

ASSISTANCE RENDERED	This Month	This Month Last Year	YTD	Last YTD	Change By Month	Change YTD
Assist to Outside Agencies	6	4	14	7	50%	100%
Assist to Jonesboro UPD/CID	22	20	44	51	10%	-14%

ARRESTS	This Month	This Month Last Year	YTD	Last YTD	Change By Month	Change YTD
Miscellaneous	5	9	17	22	-44%	-23%
Felony	56	47	133	96	19%	39%
Marijuana	13	15	22	22	-13%	0%
Cocaine	3	1	8	2	200%	300%
Crack Cocaine	6	4	12	11	50%	9%
Methamphetamine/ICE	17	17	28	28	0%	0%
LSD	0	0	0	0	N/C	N/C
Extasy (MDMA or Other Designer Drug)	0	0	1	2	N/C	-50%
Perscription	5	3	9	14	67%	-36%
Opiates (Heroin,Opium)	0	0	0	0	N/C	N/C
Labs	7	3	14	9	133%	56%
All Other Drug Offenses	0	0	0	1	N/C	-100%

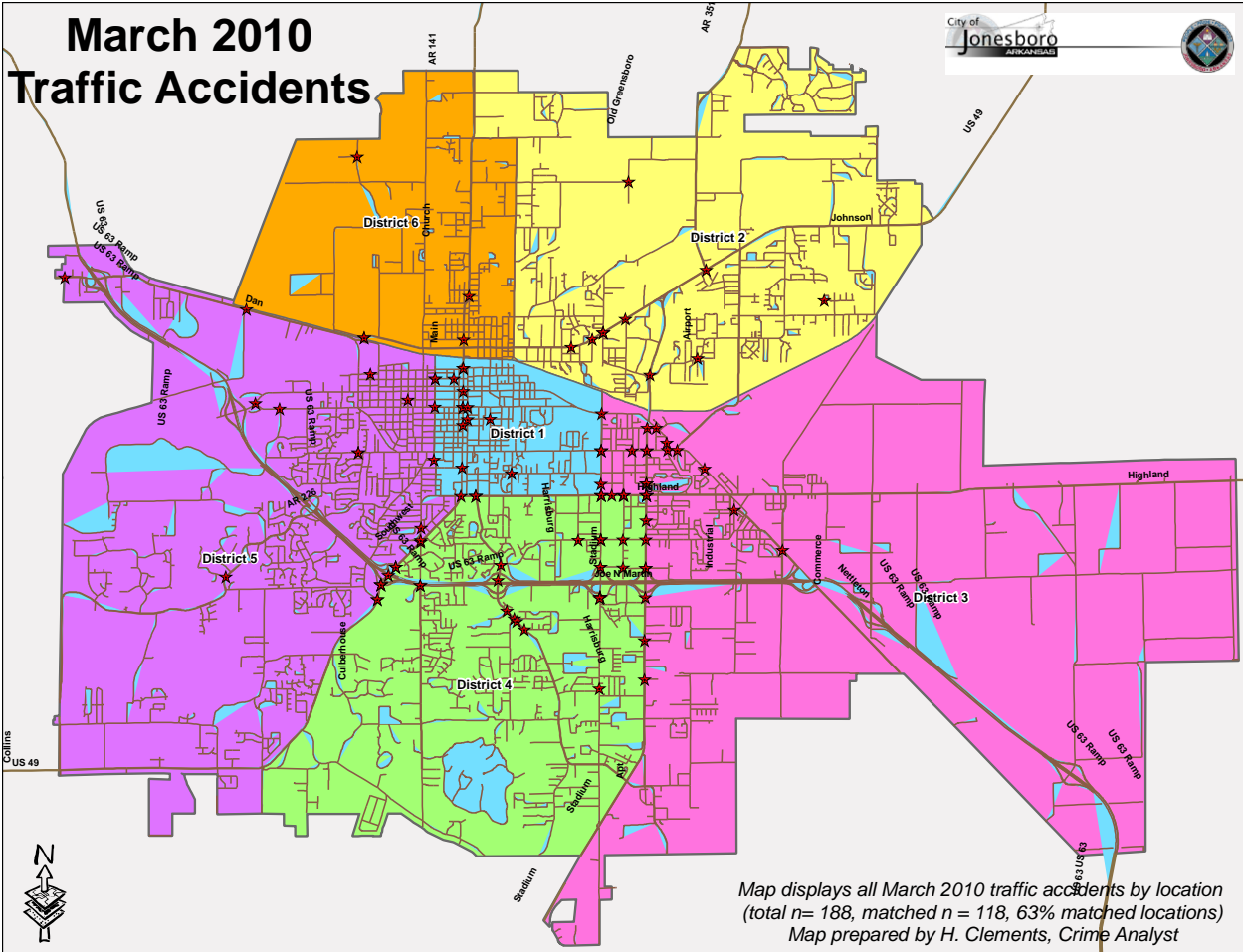
ASSET FORFEITURE	This Month	This Month Last Year	YTD	Last YTD	Change By Month	Change YTD
Vehicles Seized(No.)	0	1	0	2	-100%	-100%
Value of Assets Seized(Includes Value of vehicles)	\$5,857.00	\$4,700.00	\$8,857.00	\$14,545.00	25%	-39%
Asset Value Awarded to Jonesboro PD (State)		0	0	0	N/C	N/C
Asset Value Awarded to Jonesboro PD (Federal)		0	0	0	N/C	N/C
Asset Value Awarded to Jonesboro PD (Total)		0	0	0	N/C	N/C

ARRESTS DEMOGRAPHY	This Month	This Month Last Year	YTD	Last YTD	Change By Month	Change YTD
White	23	30	52	59	-23%	-12%
African American	12	15	25	33	-20%	-24%
Latino	0	0	6	2	N/C	200%
Asain	0	0	1	0	N/C	N/C
Other/Bi-Racial	0	0	0	0	N/C	N/C
Male	32	31	66	59	3%	12%
Female	3	9	11	21	-67%	-48%
White Male	20	21	41	37	-5%	11%
White Female	3	5	11	15	-40%	-27%
African American Male	12	6	26	21	100%	24%
African American Female	0	9	0	13	-100%	-100%
Latino Male	0	0	5	2	N/C	150%
Latino Female	0	0	0	0	N/C	N/C
Asain Male	0	0	1	0	N/C	N/C
Asain Female	0	0	0	0	N/C	N/C
Other/Bi-Racial Male	0	0	0	0	N/C	N/C
Other/Bi-Racial Female	0	0	0	0	N/C	N/C

Traffic

Comprised of three motor units and three Chargers, the Traffic Enforcement Unit responds to traffic accidents and provides increased enforcement in particularly challenging areas. This unit also provides extra coverage for specific congestion problems and special events in the community. Last, they work details targeting specific issues, such as DWI enforcement and traffic safety checkpoints.

Incidents	This Month	This Month Last Year	YTD	Last YTD	Change By Month	Change YTD
Street Accidents	122	135	376	379	-10%	-1%
Private Property Accidents	46	32	96	119	44%	-19%
Traffic Citations	462	335	1098	814	38%	35%
DWI	6	4	16	7	50%	129%
Mis. Arrests	15	49	61	86	-69%	-29%
Felony Arrests	0	1	7	3	-100%	133%
Value of Asstes Seized	0	0	0	0	N/C	N/C
Drug Arrests	0	0	0	0	N/C	N/C
Public Intoxication Arrests	1	0	1	0	N/C	N/C
Calls For Service	287	268	818	726	7%	13%
Alarms	1	3	2	11	-67%	-82%
Parking Citations	0	2	0	24	-100%	-100%
Written Warnings	70	3	218	8	2233%	2625%
TOTALS	1010	832	2693	2177	21%	24%
Patrol Miles	6,211	5,100	16,743	14,490	22%	16%
Hours Worked	810.5	832.5	2333	2366	-3%	-1%



Parking Enforcement

The Parking Enforcement Division is responsible for enforcing parking laws in the downtown area. This service provides a safe and convenient parking situation for the public.

CITATIONS ISSUED	This Month	This Month Last Year	YTD	Last YTD	Change By Month	Change YTD
Citations	73	80	144	370	-9%	-61%
Verbal Warnings	0	0	0	0	N/C	N/C

MINUTES BY ACTIVITY	This Month	This Month Last Year	YTD	Last YTD	Change By Month	Change YTD
Office	565	1085	4775	9080	-48%	-47%
Admin(Non-Office)	630	550	1330	3950	15%	-66%
Community	0	0	0	300	N/C	-100%
Training	0	0	0		N/C	N/C
Patrol	5645	6115	12400	18180	-8%	-32%

Animal Control

The Animal Control Division is responsible for educating the public on safe and humane issues regarding animal treatment, enforcing all animal laws and ordinances, assisting the public in resolving animal issues, and protecting the safety and welfare of the citizens and animals in this community.

Incidents	This Month	This Month Last Year	YTD	Last YTD	Change By Month	Change YTD
Barking Complaints	13	7	19	10	86%	90%
Bite Reports	4	9	13	12	-56%	8%
Door Hangers	55	18	98	43	206%	128%
Welfare Checks	133	64	258	118	108%	119%
Advised of Rights	235	316	620	543	-26%	14%
Incident Reports	6	21	26	29	-71%	-10%
Gone on Arrival	34	53	104	128	-36%	-19%
Complaints	853	678	2,014	1,082	26%	86%
Desk Complaints	1,015	906	2,733	1,592	12%	72%
Captured Dogs	133	153	381	249	-13%	53%
Captured Cats	11	1	32	2	1000%	1500%
Captured Wildlife	29	5	45	11	480%	309%
Chemical Captures	6	16	20	24	-63%	-17%
Traps	24	14	43	22	71%	95%
Deceased Animals	108	76	252	129	42%	95%
Assist J.P.D.	11	2	25	4	450%	525%
Assist C.S.O.	0	3	0	4	-100%	-100%
Public Relations	662	217	1,513	367	205%	312%
CITATIONS ISSUED	72	22	116	38	227%	205%
WARNINGS ISSUED	84	15	153	30	460%	410%
Physical Arrests	2	1	2	3	100%	-33%
City Warrants Served	0	3	0	6	-100%	-100%
County Warrants Served	0	0	0	0	N/C	N/C
Euthanized	70	52	160	126	35%	27%
Euthanized for Humane Society	0	38	0	54	-100%	-100%
Deceased Animals Landfill lbs.	5,180	4,320	12,100	12,880	20%	-6%
Wildlife Euthanized	29	5	45	29	480%	55%
Sent to Rescue Centers	8	37	35	37	-78%	-5%
Adoptions	39	26	121	26	50%	365%
Miles Driven	9,659	11,100	23,887	29,891	-13%	-20%

Fleet Maintenance

The Fleet Maintenance is responsible for all of the police vehicle maintenance upkeep, cleanliness, and purchasing. In addition, this Division handles most of the purchasing of equipment, supplies, and uniforms for all of the Police Department.

Repair Costs by Model Year	This Month	This Month Last Year	YTD	Last YTD	Change By Month	Change YTD
95-99	\$0.00	\$0.00	\$0.00	\$69.77	N/C	-100%
2000	\$0.00	\$0.00	\$195.02	\$0.00	N/C	N/C
2001	\$0.00	\$0.00	\$21.40	\$0.00	N/C	N/C
2002	\$0.00	\$0.00	\$2,054.11	\$0.00	N/C	N/C
2003	\$0.00	\$0.00	\$0.00	\$139.14	N/C	-100%
2004	\$2,121.14	\$751.12	\$4,608.30	\$1,924.01	182%	140%
2005	\$564.01	\$1,445.49	\$2,899.52	\$1,472.02	-61%	97%
2006	\$1,394.54	\$1,506.75	\$9,727.06	\$2,660.91	-7%	266%
2007	\$237.42	\$121.88	\$1,768.01	\$878.96	95%	101%
2008	\$22.46	\$0.00	\$22.46	\$37.80	N/C	-41%
2009	\$11.23	\$0.00	\$11.23	\$0.00	N/C	N/C
2010	\$0.00	n/a	\$0.00	n/a	N/C	N/C
TOTALS	\$4,350.80	\$3,825.24	\$21,307.11	\$7,182.61	14%	197%

Routine Preventative Maintenance by Model Year	This Month	This Month Last Year	YTD	Last YTD	Change By Month	Change YTD
95-99	\$0.00	\$93.27	\$0.00	\$93.27	-100%	-100%
2000	\$29.00	\$0.00	\$29.00	\$115.74	N/C	-75%
2001	\$0.00	\$258.63	\$40.00	\$1,026.96	-100%	-96%
2002	\$0.00	\$0.00	\$0.00	\$0.00	N/C	N/C
2003	\$84.37	\$33.00	\$164.37	\$581.13	156%	-72%
2004	\$ 632.73	\$93.00	\$ 1,777.59	\$1,590.01	580%	12%
2005	\$ 797.26	\$340.37	\$ 1,401.01	\$1,243.69	134%	13%
2006	\$1,059.12	\$2,160.77	\$4,049.99	\$4,089.26	-51%	-1%
2007	\$618.00	\$ 150.00	\$4,612.65	\$ 1,992.42	312%	132%
2008	\$614.27	\$ 66.50	\$764.27	\$ 166.50	824%	359%
2009	\$0.00	\$248.40	\$110.02	\$248.40	-100%	-56%
2010	\$394.00	n/a	\$394.00	n/a	N/C	N/C
TOTALS	\$4,228.75	\$3,443.94	\$13,342.90	\$11,147.38	23%	20%

Records

The Records Division is responsible for providing administrative and clerical support to the department. Major responsibilities include entering the accident and incident reports and tickets into the records database management system, assisting the general public for report requests, performing criminal backgrounds, serving as a switchboard at times, performing validations, and setting up and managing the payment plans out of court.

RECORDS	This Month	This Month Last Year	YTD	Last YTD	Change By Month	Change YTD
Incident/Arrest Reports Processed	1,250	1,023	3,518	2,826	22%	24%
Accident Reports Processed	191	250	558	678	-24%	-18%
Citations Processed	4,665	3,432	12,412	9,560	36%	30%
Warnings Processed	461	344	1,068	939	34%	14%
Backgrounds	15	8	47	20	88%	135%
Fingerprints	105	188	332	334	-44%	-1%
Photos	4	1	4	1	300%	300%
Accident Requests	102	132	288	374	-23%	-23%
Accident Requests Online	168	165	447	474	2%	-6%
TOTALS	6,961	5,543	18,674	15,206	26%	23%

Professional Standards

The Office of Professional Standards, a unit within Administration, is charged with the compilation and updating of an extensive set of policies and procedures and providing a general

operations guideline and code of conduct for officers to follow. In the event that a member of the public does experience a negative interaction with an officer, mechanisms are in place for them to lodge a complaint. All complaints are reviewed and investigations completed in a timely manner.

	This Month	This Month Last Year	YTD	Last YTD	Change By Month	Change YTD
Opened (TOTAL)	5	4	22	16	25%	38%
Closed	4	4	21	14	0%	50%
Inquiries	5	7	21	15	-29%	40%
Formal Investigations	0	0	1	2	N/C	-50%
Sustained	2	3	16	8	-33%	100%
Not-Sustained	1	0	2	1	N/C	100%
Exhonerated	0	2	1	4	-100%	-75%
Unfounded	1	2	2	3	-50%	-33%