

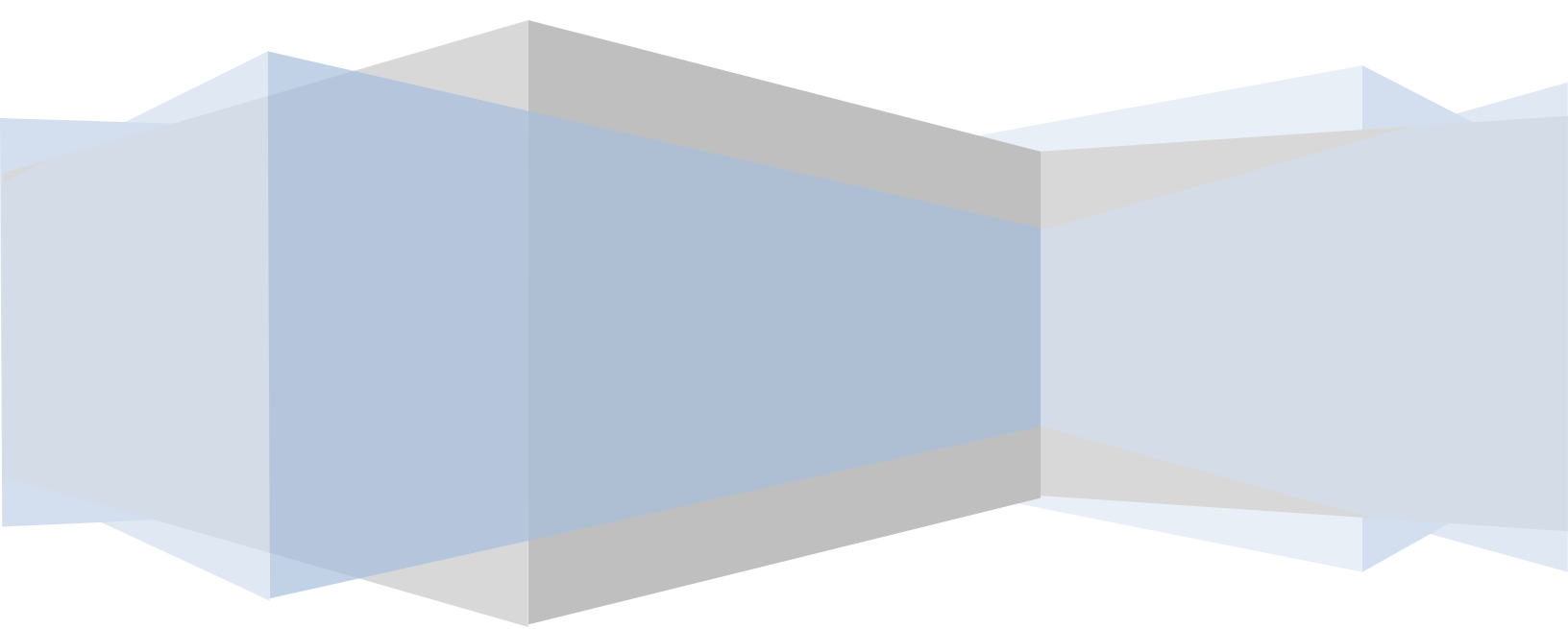
Jonesboro Police Department



# Monthly Report

March 2011

Basia Combs, Crime Analyst



## EXECUTIVE SUMMARY

The purpose of the Jonesboro Police Department Monthly Report is to compile data into one integrated report for review, allowing for a seamless flow of information for better decision-making. After each department collates their monthly numbers and sends it to the Office of Crime Analysis, it is organized into sections of departmental data, analyzed and packaged, and finally disseminated to department heads, the Chief of Police, the City Mayor, and the City Council. Major sections include Crime Analysis, Emergency 911, Uniform Police Division, Prowl, Criminal Investigative Division, Warrants, Drug Task Force, Traffic, Parking Enforcement, Animal Control, Fleet Maintenance, Records, and Professional Standards.

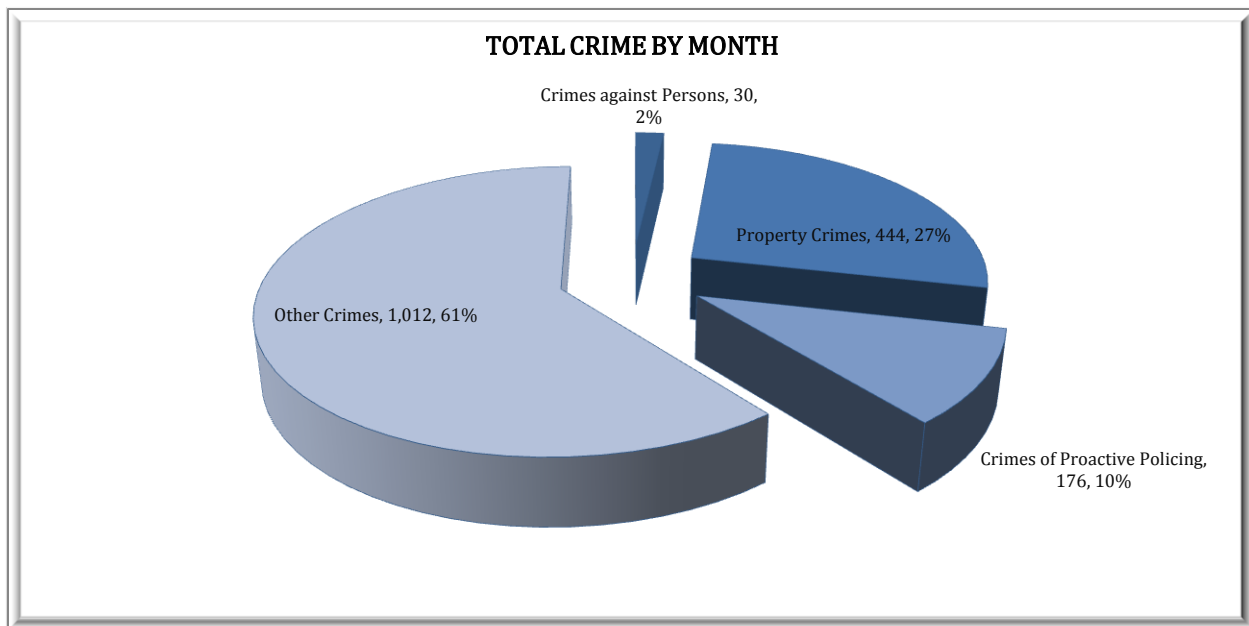
## CRIME ANALYSIS

The Crime Analysis division consists of one Crime Analyst and one part-time Crime Analyst Assistant. The Crime Analyst position is responsible for the analysis and dissemination of crime activity data and the collection and maintenance of crime intelligence information for the city of Jonesboro. Additionally, the Crime Analyst is charged with providing the department with current and accurate crime maps, presenting crime activity data to audiences of interest, and responding to requests for crime data from civilians and departmental staff. Data exported from this division is used by field agents for more effective, efficient policing, administration for improved staffing decisions, and the Mayor's office for community decision making and enhanced public relations. The following section is broken down into Total Crime, Crimes against Persons, Property Crimes, Crimes of Proactive Policing, Other Crimes, and Arrest Demographics.

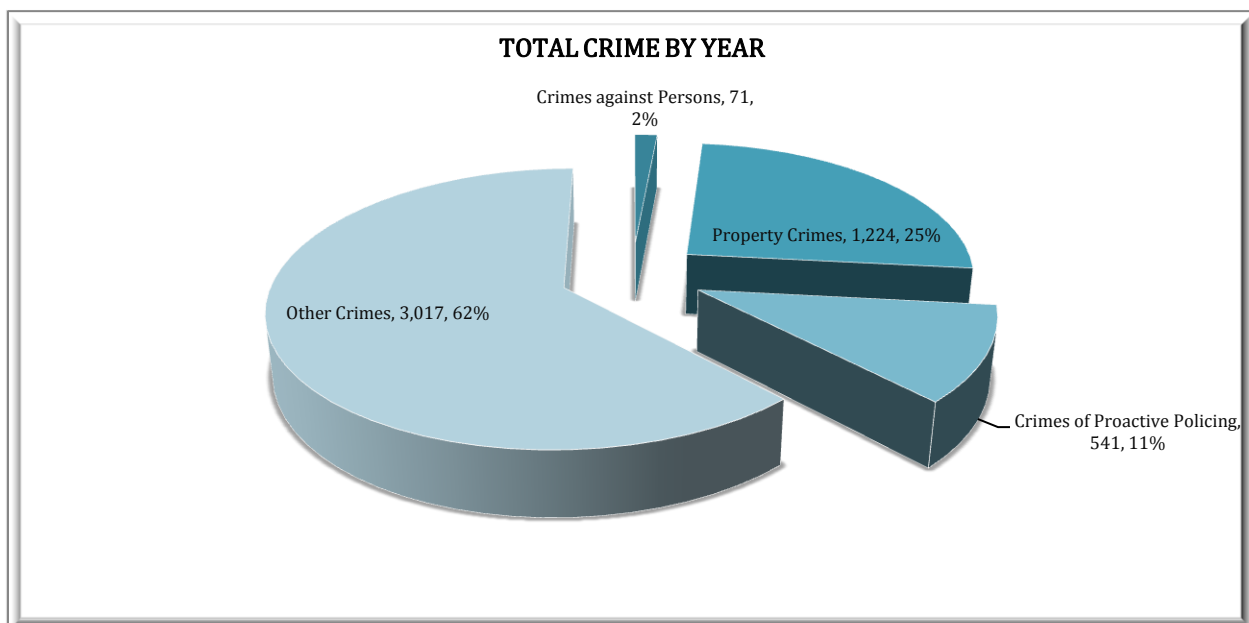
## TOTAL CRIME

The crime activity for the month of March, 2011, is at a total of 1,662 offenses, up from 1,516 offenses last March, a 10% increase. With Jonesboro population equal to 67,263, the crime rate is 24.71 crimes per 1,000 population for the month of March of this year, compared to the 23.55 crimes per 1,000 population last year, a 10% increase\*. Other Crimes absorb the majority, 61%, of this month's crime activity ( $n = 1,012$ ). Property crimes fall in second place with 27% ( $n = 444$ ). Following in third and fourth places are crimes of proactive policing at 10% ( $n = 176$ ) and crimes against persons at 2% ( $n = 30$ ).

\* Note: Numbers are based on 2010 population estimate = 64,374.

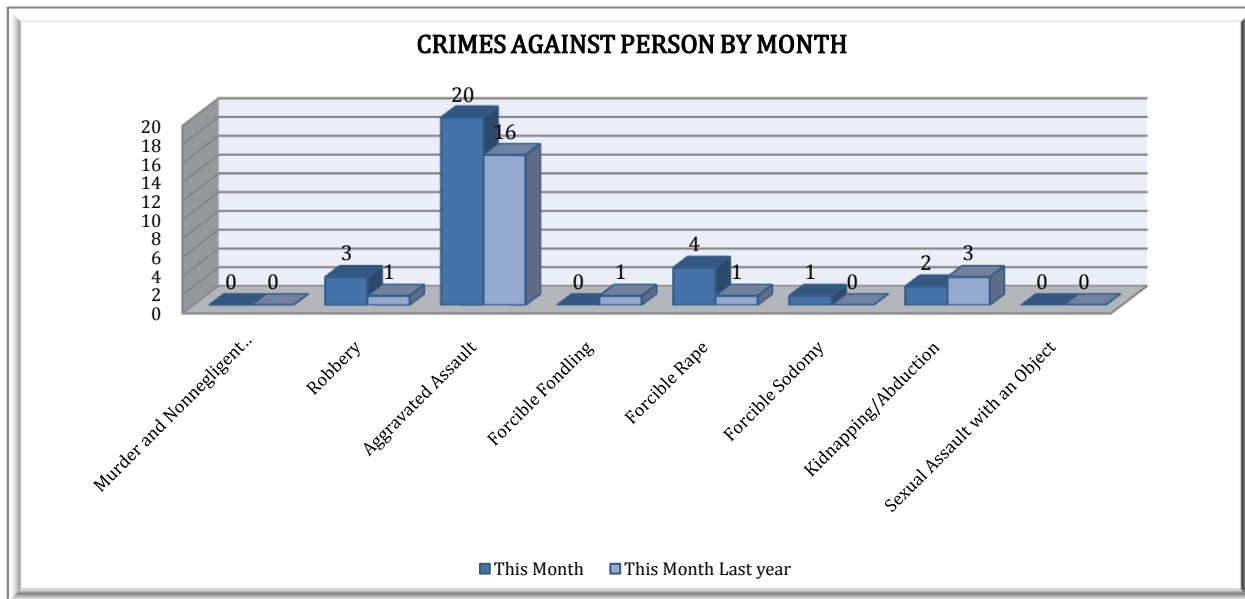


Year to date data includes number of crimes from January through March, of which there is a total of 4,853 offenses, up from 4,380 last March, an 11% increase. Again, Other Crimes have the highest percentage to total crimes at 62% ( $n = 3,017$ ). Similar to this month's data, Property Crimes take second place at 25% ( $n = 1,224$ ). Following are the crimes of Proactive Policing at 11% ( $n = 541$ ) and crimes against persons at 2% ( $n = 71$ ).

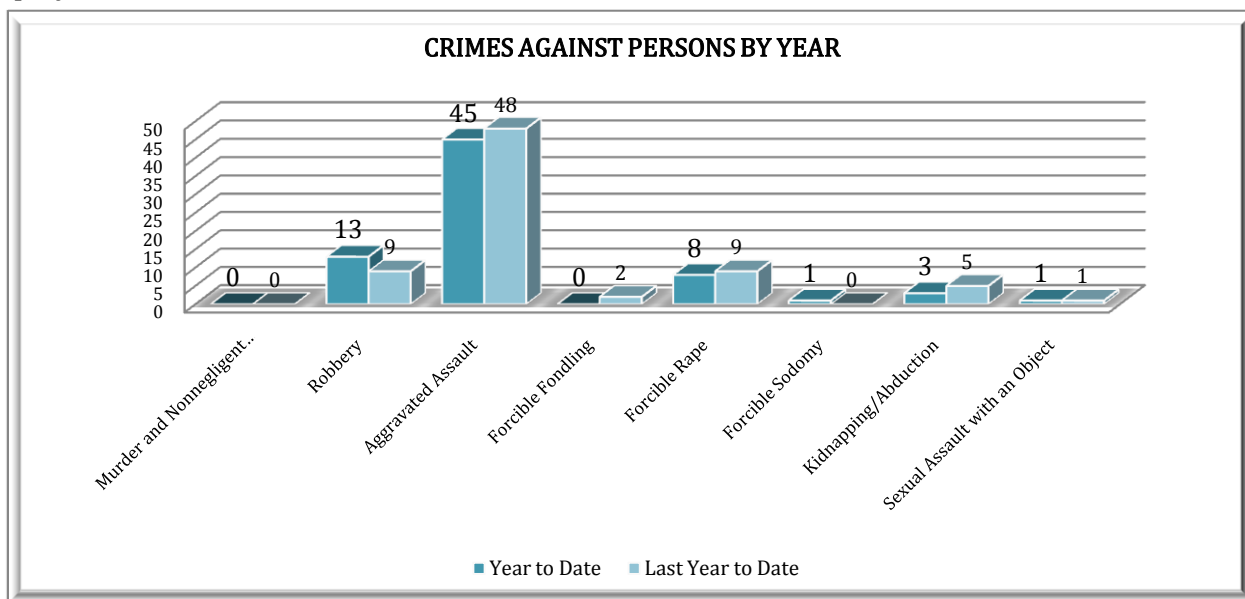


### CRIMES AGAINST PERSONS

There are 8 crimes that make up this section. There were a total of 30 offenses in this area this month, up from 22 last March, a 36% increase. The following chart demonstrates this month's activity compared to March of last year's activity. Aggravated Assaults are higher, up to 20 from 16, a 25% increase. There were also 3 more Forcible Rapes in Jonesboro this month.

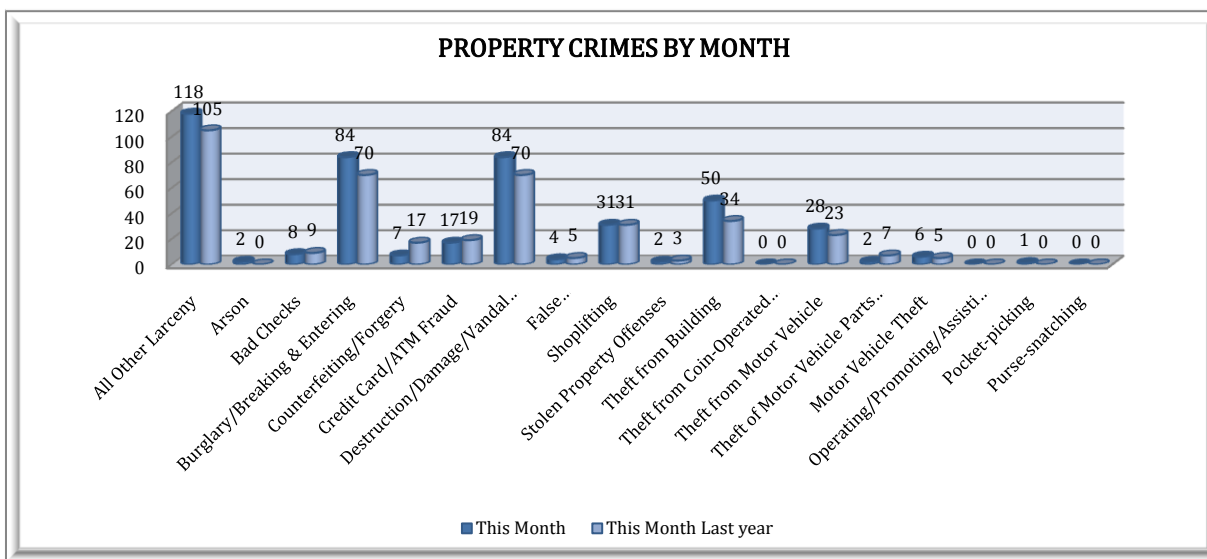


Bellows bar graph indicates the year to date data for Crimes against Persons. Total number of year to date Crimes against Persons this year is 71, down from 74 of last March, a 4% decrease. As for the year to date totals Aggravated Assaults are down by 6%; Robberies are up by 44%.

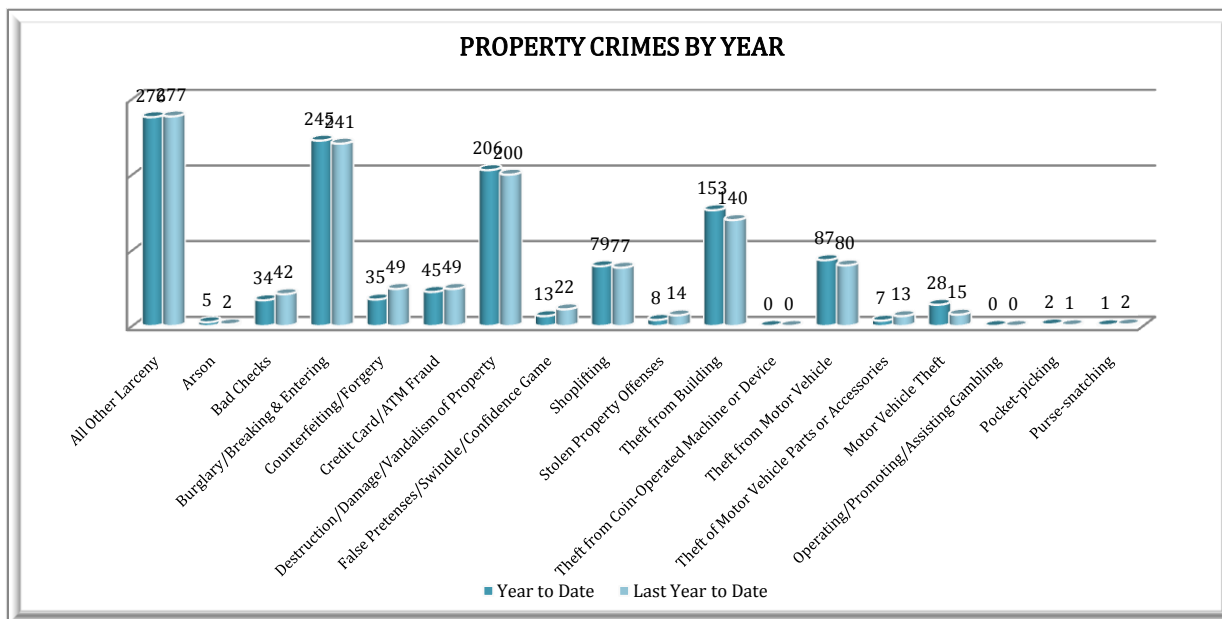


## PROPERTY CRIMES

This section displays the criminal activity for 18 crimes, all against property. This month, there were a total of 444 Property Crimes, a 12% increase from last March. The data indicates an evident drop of Counterfeiting/Forgery crimes, a 59% decrease, compared to March 2010. There is a significant increase within Theft from Building (up 47%), Burglary (up 20%), and Motor Vehicle Theft (up 20%).

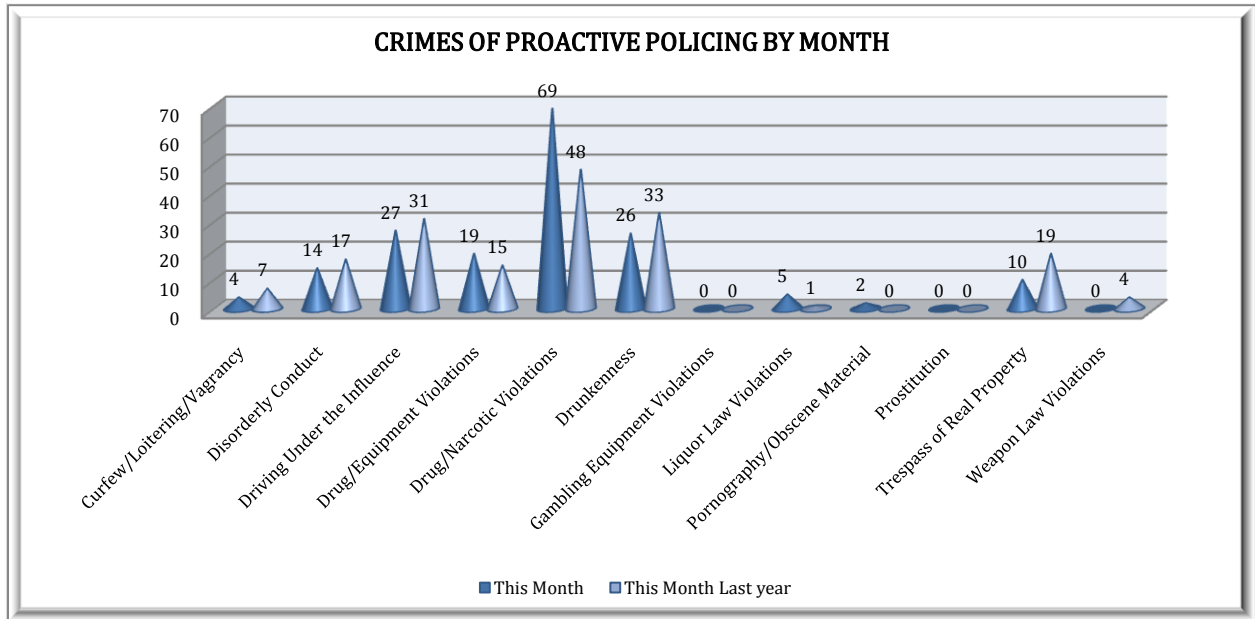


To date this year, 1,224 property offenses have occurred; the data indicates no percentage change when compared to last year's data at this same time. The Counterfeiting/Forgery category of crime indicates a 29% drop from last year and so are Stolen Property Offenses, a 43% decrease. The Motor Vehicle Theft shows 87% increase when compared to March 2010.

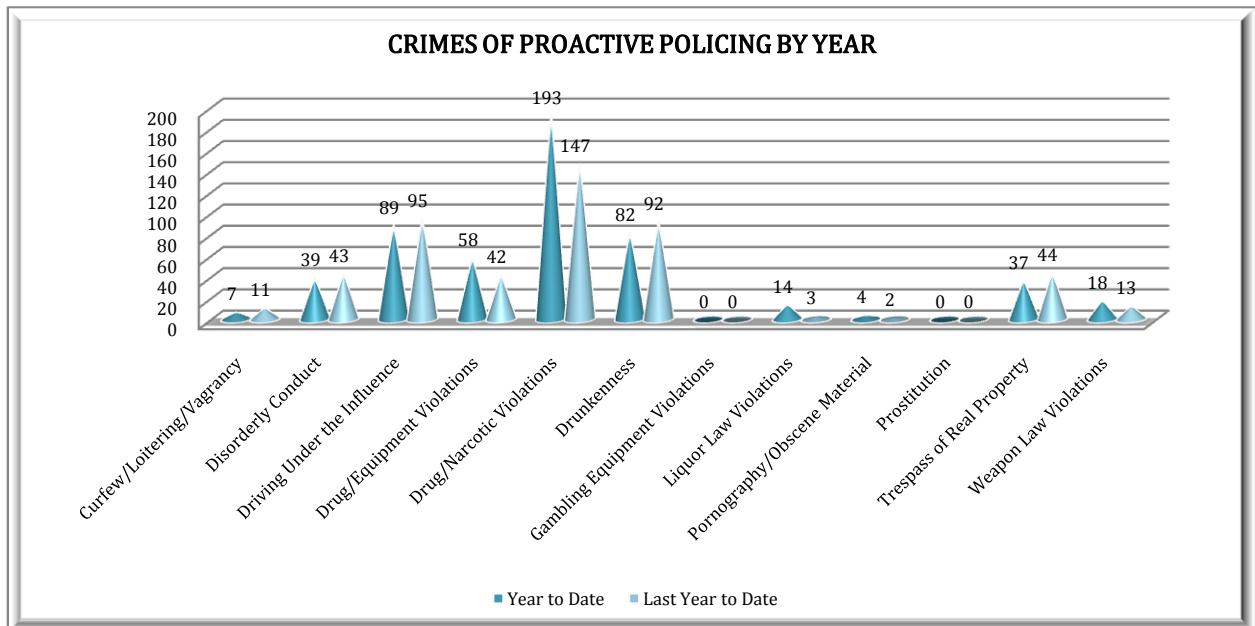


### CRIMES OF PROACTIVE POLICING

Crimes of Proactive Policing are those crimes that result from police officers actively policing the streets to combat certain types of street crime. As a chart below indicates, twelve crimes fall under this category. A total of 176 offenses have occurred this month, a 1% increase comparing to last March ( $n = 175$ ). This increase is mainly related to Drug/Narcotic Violations reported this month, which are up by 44%.

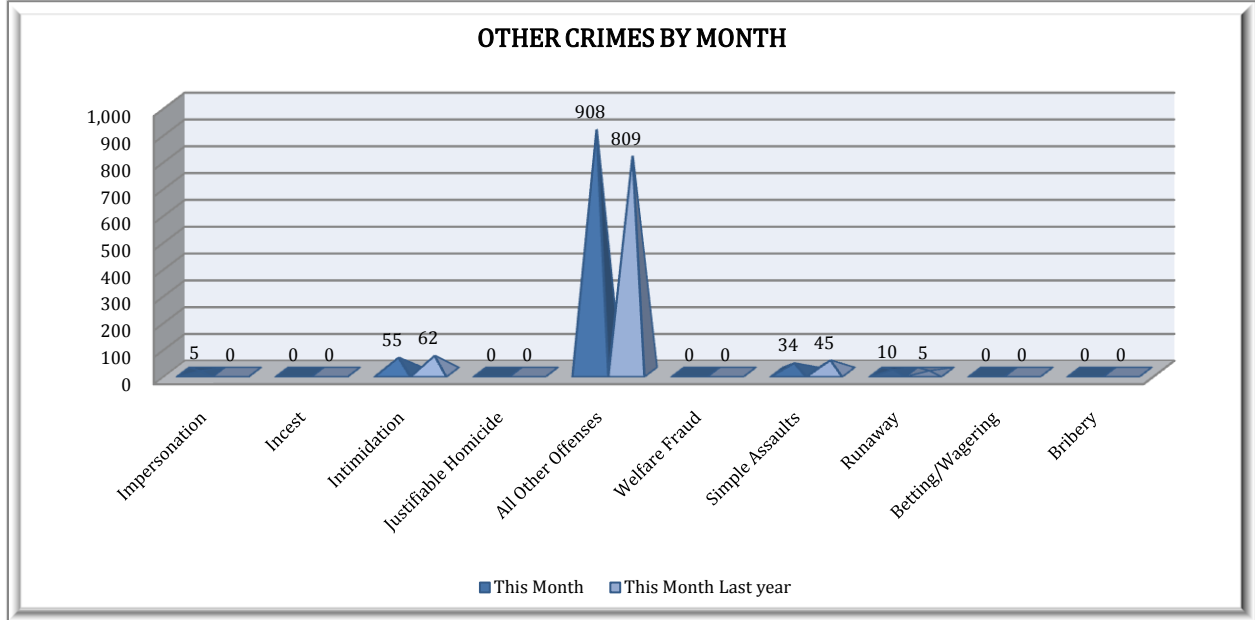


To date for the year 2011, there have been 541 crimes of proactive policing, up 10%. Again, Drug/Narcotic Violations indicate a significant increase within this crime category as they are up by 31%; Drug/Equipment Violations are 38% higher, compared to March 2010.

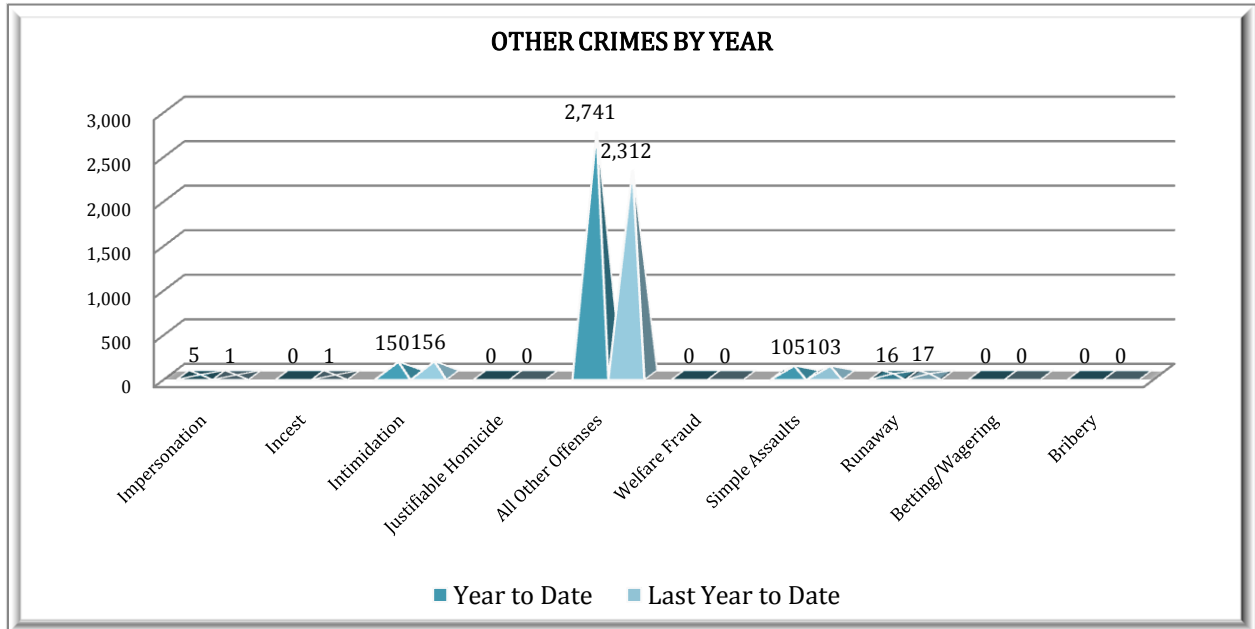


## OTHER CRIMES

There are 10 crimes that fall into the Other Crimes category. This month, there have been a total of 1012 Other Crimes, up from 921 last March, a 10% increase. Simple Assaults are down, a 24% decrease and so are Intimidations, indicating an 11% decrease.



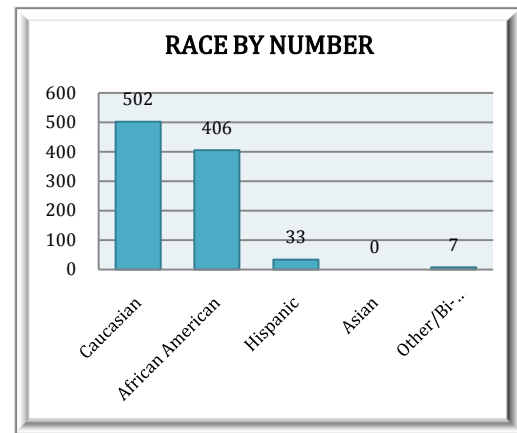
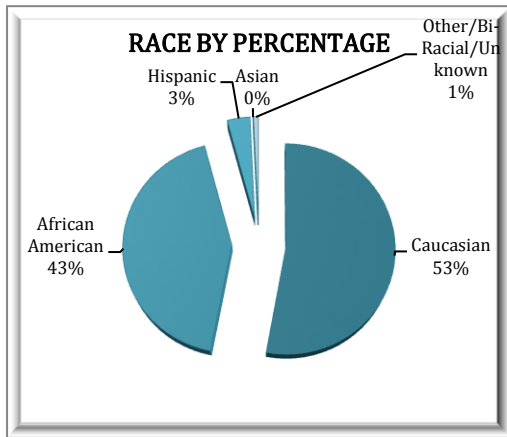
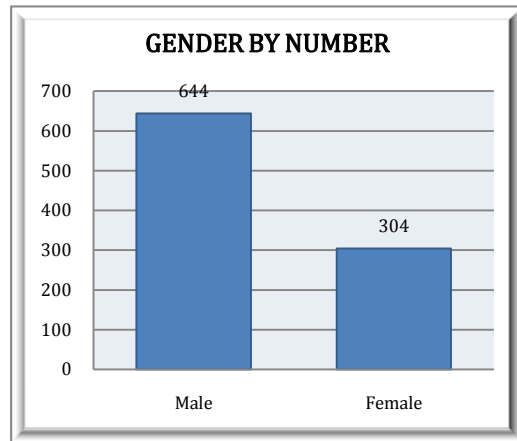
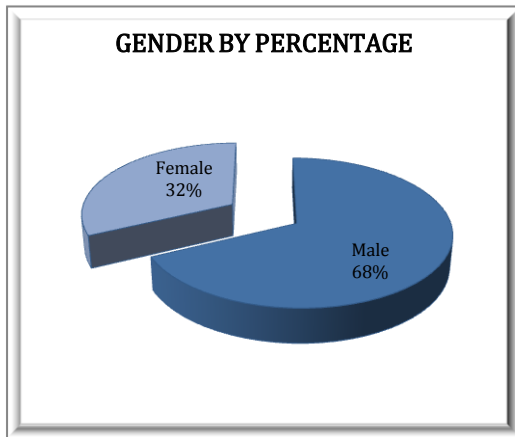
To date this year, there have been 3,017 Other Crimes, up from 2,590 last March, a 16% increase. Intimidations are down by 4%. All Other Crimes within the Other Crimes category are up 19%, compared to last year's totals.



**ARREST DEMOGRAPHICS**

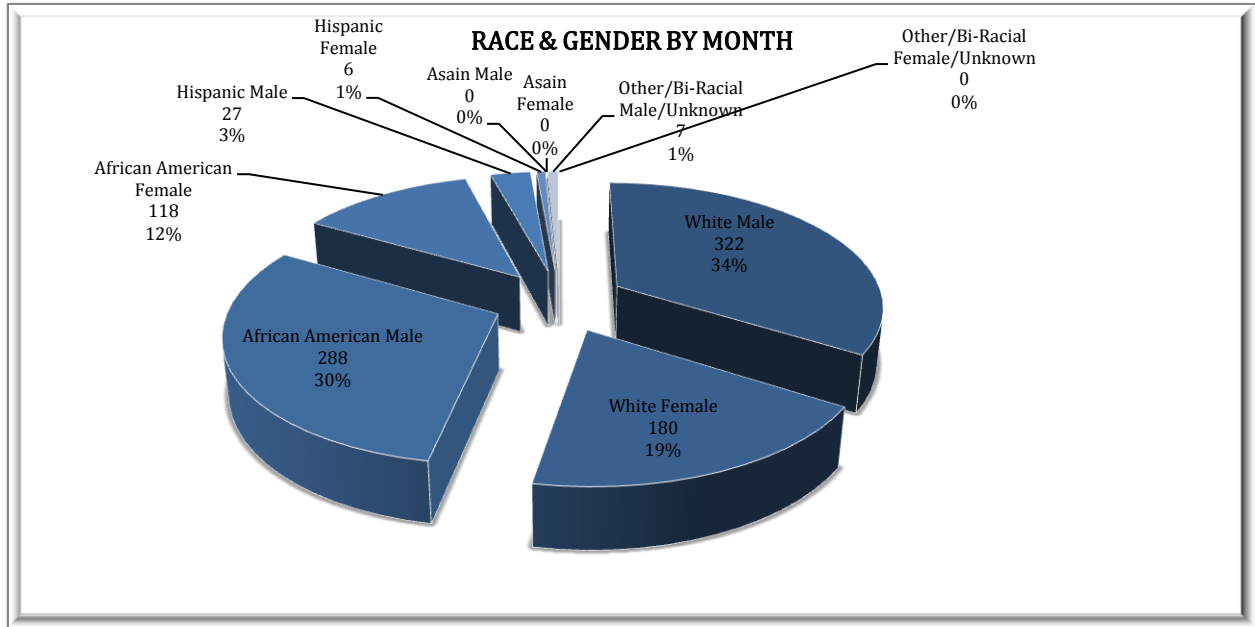
In March, there were a total of 948 arrests, as opposed to 897 arrests in March of last year, a 6% increase; that is 0.57 arrests per crime for March of this year, as opposed to 0.59 arrests per crime for March of last year, a 4% decrease of arrests per crime.

This section breaks down this month’s arrests by race and gender. The majority of offenders have been male ( $n = 644$ ), as opposed to female ( $n = 304$ ) and Caucasian ( $n = 502$ ) and African American ( $n = 406$ ) as opposed to Hispanic ( $n = 33$ ), Asian ( $n = 0$ ), or other/unknown/bi-racial ( $n = 7$ ).



Caucasian males make up the majority of offenders for the month of March, totaling 34% ( $n = 322$ ). African American males account for 30% ( $n = 288$ ) of the male offenders this month. Caucasian females make up 19% ( $n = 180$ ) and African American females make up 12% ( $n = 118$ ). Hispanic males make up 3% ( $n = 27$ ). There was a 1% of Hispanic Female arrestees ( $n = 6$ ) and a 1% of Other/Biracial Males ( $n = 7$ ). This distribution can be reviewed in the pie chart below.





### EMERGENCY 911

Also known as Public Safety Answering Point (PSAP), the Emergency 911 Division is responsible for answering all calls from public for emergency assistance, accessing the needed information to best assist, and then assigning the most efficient and effective emergency response. In addition, this division is responsible for setting priority call dispatching to field units including Police, Fire, and EMS. Emergency 911 also maintains all records for radio logs, calls for service, and other emergency service data collections.

Calls by Type	This Month	This Month Last Year	YTD	Last YTD	Change By Month	Change YTD
Land Line	799	894	2,229	2,543	-11%	-12%
Cell Phone	3,923	3,329	10,739	10,145	18%	6%
Admin Lines	15,775	15,049	46,221	45,328	5%	2%
<b>TOTALS</b>	<b>20,497</b>	<b>19,272</b>	<b>59,189</b>	<b>58,016</b>	<b>6%</b>	<b>2%</b>

Calls by Agency	This Month	This Month Last Year	YTD	Last YTD	Change By Month	Change YTD
Jonesboro PD Calls	7,115	6,370	18,604	17,630	12%	6%
Craighead Cty Sheriff	1,258	959	3,704	2,775	31%	33%
Jonesboro Fire Dpt - dispatch	195	157	560	460	24%	22%
Jonesboro Fire Dpt - Med Asst	114	96	343	324	19%	6%
Craighead Cty - Fire	59	61	155	172	-3%	-10%
Craighead Cty - 1st Responder	78	61	240	226	28%	6%
Emerson Ambulance	222	258	687	673	-14%	2%
Medic One	305	288	851	850	6%	0%
Air Evac	0	1	1	2	-100%	-50%
Coroner	6	6	13	10	0%	30%
ARK State Police	15	9	42	40	67%	5%
Jonesboro Animal Control	11	52	62	168	-79%	-63%
Wreckers Called	150	193	332	329	-22%	1%
<b>TOTALS</b>	<b>9,528</b>	<b>8,511</b>	<b>25,594</b>	<b>23,659</b>	<b>12%</b>	<b>8%</b>

Calls by Municipality	This Month	This Month Last Year	YTD	Last YTD	Change By Month	Change YTD
Bay PD	98	136	232	339	-28%	-32%
Bono PD	111	244	374	525	-55%	-29%
Brookland PD	141	232	467	582	-39%	-20%
Caraway PD	93	91	238	278	2%	-14%
Cash PD	19	64	72	251	-70%	-71%
Egypt PD	15	14	33	29	7%	14%
Lake City PD	90	142	264	388	-37%	-32%
Monette PD	125	121	349	358	3%	-3%
<b>TOTALS</b>	<b>692</b>	<b>1,044</b>	<b>2,029</b>	<b>2,750</b>	<b>-34%</b>	<b>-26%</b>

## UNIFORM PATROL DIVISION

The UPD is responsible for responding to calls into the Emergency – 911 Division by civilians and are normally the first responders. Jonesboro is divided into 6 patrol districts. Officers from UPD are assigned to a district and work the same district every shift. In addition, when a Traffic Officer is not available, a UPD Officer will respond to traffic accidents and assist in directing traffic when necessary.

Incidents	This Month	This Month Last Year	YTD	Last YTD	Change By Month	Change YTD
Calls for Service	7117		21583		N/C	N/C
Complaints / Calls	3,932		3,932		N/C	N/C
Assists	1,163		1,163		N/C	N/C
Incident Reports	977		1,809		N/C	N/C
Street Accidents	95		163		N/C	N/C
Private Property Accidents	44		82		N/C	N/C
Traffic Stops	2,212		4,632		N/C	N/C
Traffic Citations	799		1,530		N/C	N/C
DWI	26		783		N/C	N/C
Mis. Arrests	481		4,333		N/C	N/C
Felony Arrests	81		288		N/C	N/C
Warrants Served	1,589		2,981		N/C	N/C
Alarms	376		961		N/C	N/C
Written Warnings	884		1,562		N/C	N/C
<b>Totals</b>	<b>19,776</b>	<b>0</b>	<b>45,802</b>	<b>0</b>	<b>0</b>	<b>0</b>
Patrol Miles			69,606		N/C	N/C
Hours Worked	11,091		22,062		N/C	N/C

\* Due to an implementation of changes in reporting method as of this year, the last year data and thus, the change by year are intentionally omitted in the table above.

## PROWL

The Prowl unit is a uniformed street crimes unit specializing in criminal patrol, narcotics enforcement, gang investigation, and prostitution activity. The unit conducts directed patrols, investigates citizen complaints of street-level criminal activity, and directly assists the 2<sup>nd</sup> Judicial Drug Task Force. PROWL also assists any division within the Jonesboro Police Department at any time when needed.

Incidents	This Month	This Month Last Year	YTD	Last YTD	Change By Month	Change YTD
Street Accidents	0	0	0	0	N/C	N/C
Private Property Accidents	0	0	0	1	N/C	-100%
Traffic Citations	28	41	127	86	-32%	48%
DWI	1	0	0	1	N/C	-100%
Mis. Arrests	141	128	317	311	10%	2%
Felony Arrests	28	22	86	71	27%	21%
Drug Arrests	34	19	97	69	79%	41%
Public Intoxication Arrests	0	0	0	0	N/C	N/C
Calls For Service	68	66	287	256	3%	12%
Alarms	0	0	0	0	N/C	N/C
Parking Citations	0	0	0	0	N/C	N/C
Written Warnings	40	33	170	51	21%	233%
Assists	0	0	0	0	N/C	N/C
<b>TOTALS</b>	<b>340</b>	<b>309</b>	<b>1,084</b>	<b>846</b>	<b>10%</b>	<b>28%</b>

Value of Drugs Seized	\$15,440	\$2,900	\$28,490	\$24,857	432%	15%
Value of Assets Seized	367	14,779	16,646	18,028	-98%	-8%
Patrol Miles	5,600	5,300	15,170	15,300	6%	-1%

### CRIMINAL INVESTIGATIVE DIVISION

The CID is responsible for conducting follow-up investigations into criminal acts reported to the Jonesboro Police Department. The primary goal is to collect and present evidence that conclusively leads to a successful arrest. Additionally, CID is charged with clearing additional crimes, recovering stolen property, preventing additional crimes, and gathering intelligence information.

Investigations	This Month	This Month Last Year	YTD	Last YTD	Change By Month	Change YTD
Criminal Investigations Assigned	83	91	236	207	-9%	14%
Criminal Investigations Closed	75	110	227	251	-32%	-10%
Cleared by Arrests	61	55	147	162	11%	-9%
Unfounded	7	10	22	23	-30%	-4%
Exceptionally Cleared	11	18	33	30	-39%	10%
Filed With Prosecutors Office	2	4	10	31	-50%	-68%
<b>TOTALS</b>	<b>239</b>	<b>288</b>	<b>675</b>	<b>704</b>	<b>-17%</b>	<b>-4%</b>

Crimes Against Persons	This Month	This Month Last Year	YTD	Last YTD	Change By Month	Change YTD
Criminal Investigations Assigned	22	20	50	44	10%	14%
Criminal Investigations Closed	14	25	49	54	-44%	-9%
Cleared by Arrests	9	13	30	36	-31%	-17%
Unfounded	1	1	2	3	0%	-33%
Exceptionally Cleared	4	9	13	12	-56%	8%
Filed With Prosecutors Office	0	2	4	3	-100%	33%
<b>TOTALS</b>	<b>50</b>	<b>70</b>	<b>148</b>	<b>152</b>	<b>-29%</b>	<b>-3%</b>

Property Crimes	This Month	This Month Last Year	YTD	Last YTD	Change By Month	Change YTD
Criminal Investigations Assigned	56	66	161	150	-15%	7%
Criminal Investigations Closed	60	57	149	177	5%	-16%
Cleared by Arrests	50	38	113	110	32%	3%
Unfounded	3	9	14	18	-67%	-22%
Exceptionally Cleared	7	9	20	24	-22%	-17%
Filed With Prosecutors Office	0	1	2	25	-100%	-92%
<b>TOTALS</b>	<b>176</b>	<b>180</b>	<b>459</b>	<b>504</b>	<b>-2%</b>	<b>-9%</b>

Crimes Against Children	This Month	This Month Last Year	YTD	Last YTD	Change By Month	Change YTD
Criminal Investigations Assigned	3	1	10	10	200%	0%
Criminal Investigations Closed	7	5	16	21	40%	-24%
Cleared by Arrests	2	4	4	10	-50%	-60%
Unfounded	3	0	8	5	N/C	60%
Exceptionally Cleared	0	0	0	1	N/C	-100%
Filed With Prosecutors Office	2	1	4	5	100%	-20%
<b>TOTALS</b>	<b>17</b>	<b>11</b>	<b>42</b>	<b>52</b>	<b>55%</b>	<b>-19%</b>
Miscellaneous Investigations Assigned	2		14		N/C	N/C
Miscellaneous Investigations Cleared	4		14		N/C	N/C

## WARRANTS

The Warrants Division is responsible for serving warrants, criminal summonses, and subpoenas that are issued by the District Court. On city court days, the Warrants Division provides a bailiff for court and a transport officer. In addition, this Division is responsible for transporting wanted persons arrested in other jurisdictions back to Jonesboro. The STEP program operates within this division and is a grant-funded operation in which officers can get paid overtime to enforce the safety belt law.

Arrests	This Month	This Month Last Year	YTD	Last YTD	Change By Month	Change YTD
Misdemeanor	1561	1059	3186	2045	47%	56%
Felony	0	2	1	3	-100%	-67%
<b>Total Arrests</b>	<b>1561</b>	<b>1061</b>	<b>3187</b>	<b>2048</b>	<b>47%</b>	<b>56%</b>
Warrants by Activity	This Month	This Month Last Year	YTD	Last YTD	Change By Month	Change YTD
Subpoenas	644	490	855	1070	31%	-20%
Commitments	1	5	1	6	-80%	-83%
Traffic Citations	2	0	4	2	N/C	100%
Complaints	0	0	0	0	N/C	N/C
Assist	0	0	0	0	N/C	N/C
Alarms	0	0	0	0	N/C	N/C
Hours by Activity	This Month	This Month Last Year	YTD	Last YTD	Change By Month	Change YTD
SI Criminal	292	193.17	699	584.04	51%	20%
Court	127.5	143.5	482	494.33	-11%	-2%
Prisoner Transport	37.5	38	90	72.34	-1%	24%
<b>Hours Worked</b>	<b>This Month</b>	<b>This Month Last Year</b>	<b>YTD</b>	<b>Last YTD</b>	<b>Change By Month</b>	<b>Change YTD</b>
Regular Hours Worked	819	603.5	2054	1813.5	36%	13%
Overtime Hours Worked	11.5	3	25	11.5	283%	117%
<b>TOTAL Hours Worked</b>	<b>830.5</b>	<b>606.5</b>	<b>2079</b>	<b>1825</b>	<b>37%</b>	<b>14%</b>
Mileage	This Month	This Month Last Year	YTD	Last YTD	Change By Month	Change YTD
<b>Total Mileage</b>	<b>3139</b>	<b>3091</b>	<b>7741</b>	<b>8540</b>	<b>2%</b>	<b>-9%</b>
STEP	This Month	This Month Last Year	YTD	Last YTD	Change By Month	Change YTD
DWI Arrest	0	1	4	2	-100%	100%
DUI Arrest	0	0	0	0	N/C	N/C
Traffic Citations	135	215	572	360	-37%	59%
Felony Arrests	0	0	0	1	N/C	-100%
Drug Arrests	0	0	0	0	N/C	N/C
<b>STEP TOTALS</b>	<b>This Month</b>	<b>This Month Last Year</b>	<b>YTD</b>	<b>Last YTD</b>	<b>Change By Month</b>	<b>Change YTD</b>
<b>Hours Worked</b>	<b>91.5</b>	<b>262.5</b>	<b>268</b>	<b>514</b>	<b>-65%</b>	<b>-48%</b>
<b>Miles Driven</b>	<b>777</b>	<b>1848</b>	<b>2455</b>	<b>3713</b>	<b>-58%</b>	<b>-34%</b>

## DRUG TASK FORCE

The DTF is responsible for investigating major drug traffickers in the area, including all types of illegal drugs. They work closely with local, state, and federal agencies to eradicate drugs from the community.

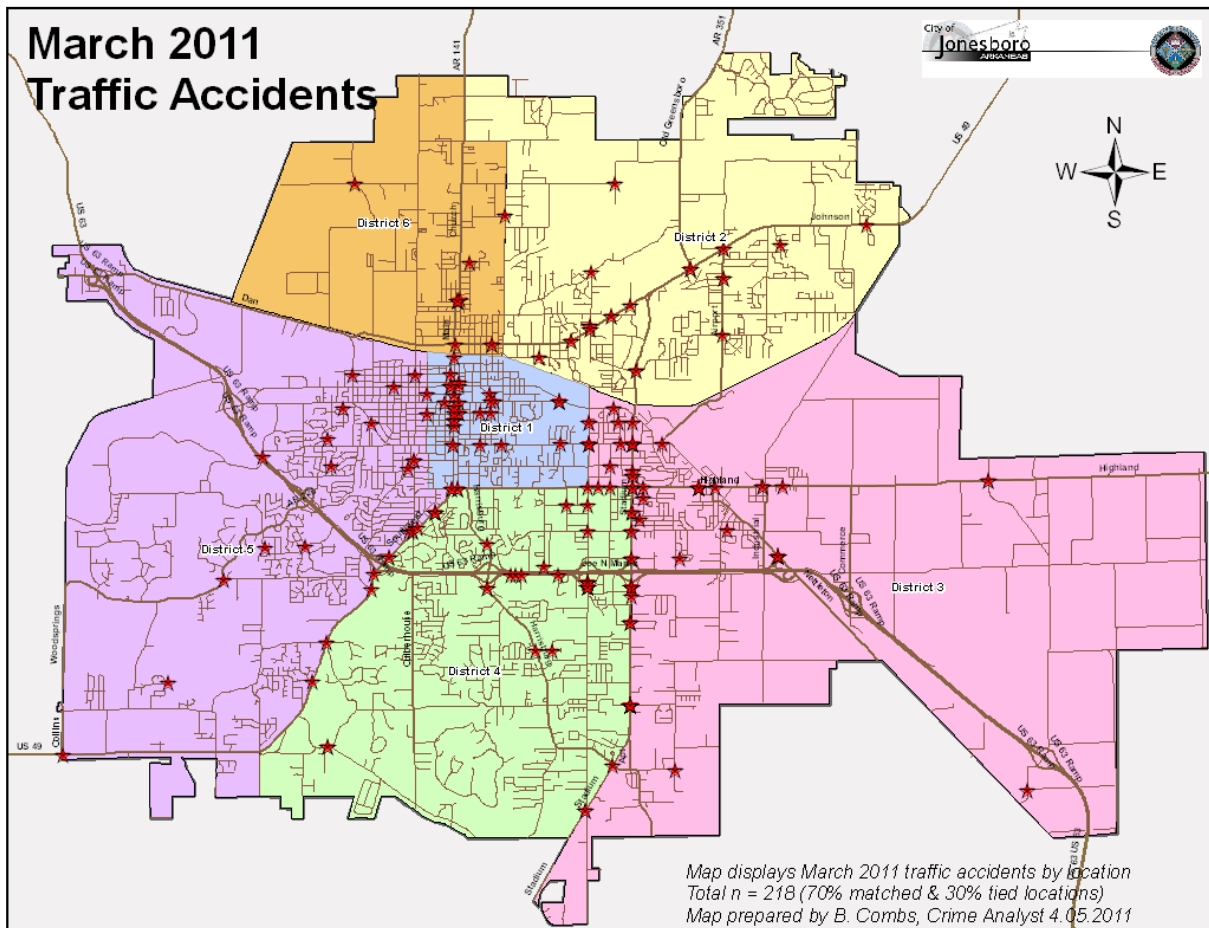
INVESTIGATIONS	This Month	This Month Last Year	YTD	Last YTD	Change By Month	Change YTD
Opened	27	42	108	100	-36%	8%
Closed	35	36	97	77	-3%	26%
<b>TOTAL</b>	<b>62</b>	<b>78</b>	<b>205</b>	<b>177</b>	<b>-21%</b>	<b>16%</b>
With Nexus to Jonesboro	This Month	This Month Last Year	YTD	Last YTD	Change By Month	Change YTD
Opened	32	34	108	83	-6%	30%
Closed		0		0	N/C	N/C
<b>TOTAL</b>	<b>32</b>	<b>34</b>	<b>108</b>	<b>83</b>	<b>-6%</b>	<b>30%</b>
Outside Jonesboro (No Known Nexus)	This Month	This Month Last Year	YTD	Last YTD	Change By Month	Change YTD
Opened	1	4	9	6	-75%	50%
Closed	0	0		0	N/C	N/C
<b>TOTAL</b>	<b>1</b>	<b>4</b>	<b>9</b>	<b>6</b>	<b>-75%</b>	<b>50%</b>
ASSISTANCE RENDERED	This Month	This Month Last Year	YTD	Last YTD	Change By Month	Change YTD
Assist to Outside Agencies	3	6	5	14	-50%	-64%
Assist to Jonesboro UPD/CID	17	22	55	44	-23%	25%
ARRESTS	This Month	This Month Last Year	YTD	Last YTD	Change By Month	Change YTD
Miscellaneous	11	5	35	17	120%	106%
Felony	38	56	167	133	-32%	26%
Marijuana	12	13	32	22	-8%	45%
Cocaine	0	3	4	8	-100%	-50%
Crack Cocaine	3	6	9	12	-50%	-25%
Methamphetamine/ICE	15	17	45	28	-12%	61%
LSD	0	0	0	0	N/C	N/C
Extasy (MDMA or Other Designer Drug)	0	0	0	1	N/C	-100%
Prescription	4	5	9	9	-20%	0%
Opiates (Heroin, Opium)	0	0	1	0	N/C	N/C
Labs	2	7	6	14	-71%	-57%
All Other Drug Offenses	0	0	0	0	N/C	N/C
ASSET FORFEITURE	This Month	This Month Last Year	YTD	Last YTD	Change By Month	Change YTD
Vehicles Seized(No.)	0	0	0	0	N/C	N/C
Value of Assets Seized(Includes Value of vehicles)	\$0	\$5,857	\$15,905	\$8,857	-100%	80%
Asset Value Awarded to Jonesboro PD (State)		\$0	\$0	\$0	N/C	N/C
Asset Value Awarded to Jonesboro PD (Federal)		\$0	\$0	\$0	N/C	N/C
Asset Value Awarded to Jonesboro PD (Total)		\$0	\$0	\$0	N/C	N/C
ARRESTS DEMOGRAPHY	This Month	This Month Last Year	YTD	Last YTD	Change By Month	Change YTD
White	21	23	66	52	-9%	27%
African American	14	12	35	25	17%	40%
Latino	0	0	1	6	N/C	-83%
Asian	0	0	0	1	N/C	-100%
Other/Bi-Racial	0	0	0	0	N/C	N/C
Male	30	32	80	66	-6%	21%
Female	5	3	21	11	67%	91%
White Male	17	20	48	41	-15%	17%
White Female	4	3	18	11	33%	64%
African American Male	13	12	32	26	8%	23%
African American Female	1	0	2	0	N/C	N/C
Latino Male	0	0	1	5	N/C	-80%
Latino Female	0	0	0	0	N/C	N/C
Asian Male	0	0	0	1	N/C	-100%
Asian Female	0	0	0	0	N/C	N/C
Other/Bi-Racial Male	0	0	0	0	N/C	N/C
Other/Bi-Racial Female	0	0	0	0	N/C	N/C

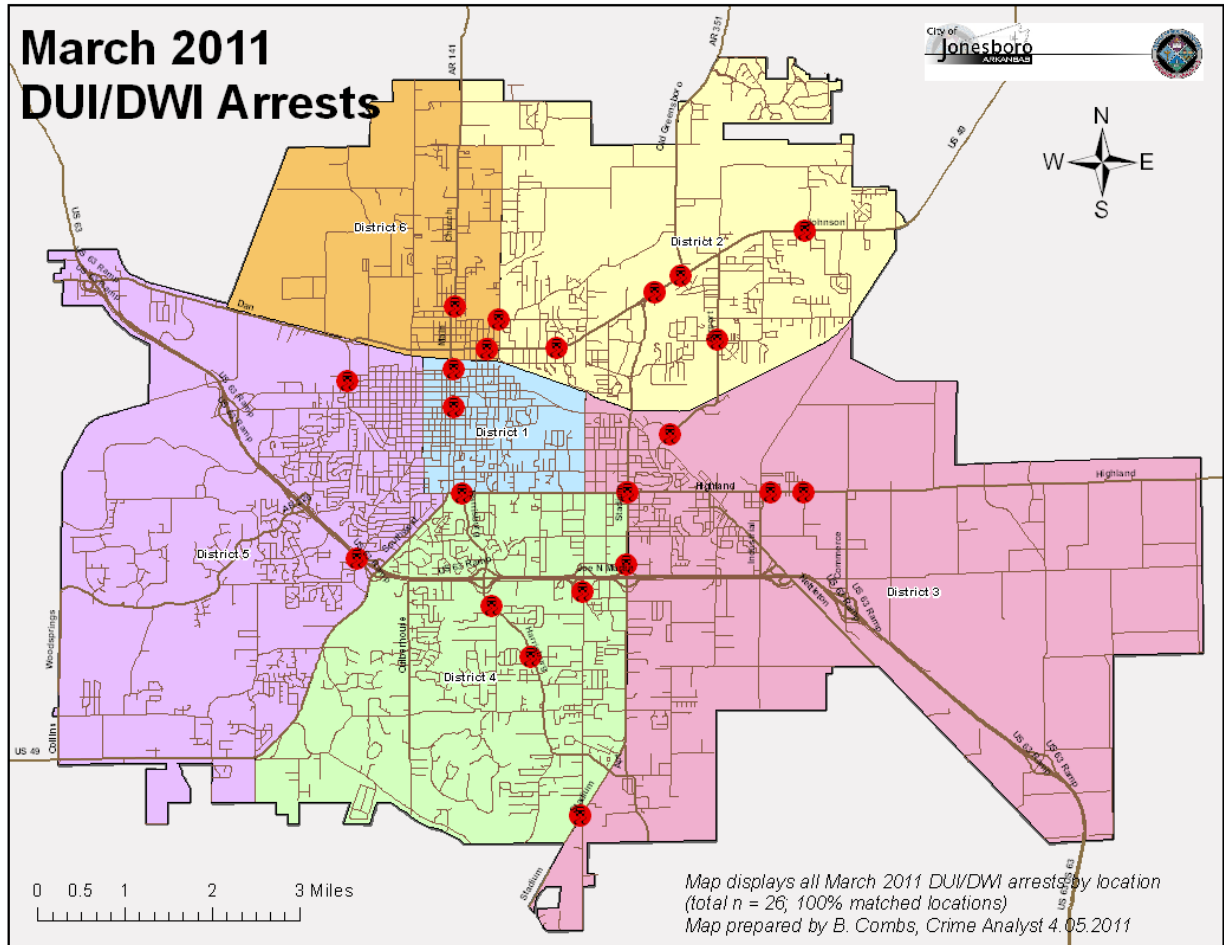
## TRAFFIC

Comprised of three motor units and three Chargers, the Traffic Enforcement Unit responds to traffic accidents and provides increased enforcement in particularly

challenging areas. This unit also provides extra coverage for specific congestion problems and special events in the community. Last, they work details targeting specific issues, such as DWI enforcement and traffic safety checkpoints.

Incidents	This Month	This Month Last Year	YTD	Last YTD	Change By Month	Change YTD
Street Accidents	139	122	392	380	14%	3%
Private Property Accidents	29	46	116	97	-37%	20%
Traffic Citations	159	462	477	1100	-66%	-57%
DWI	4	6	12	16	-33%	-25%
Mis. Arrests	5	15	39	61	-67%	-36%
Felony Arrests	1	0	5	7	N/C	-29%
Drug Arrests	0	0	0	0	N/C	N/C
Public Intoxication Arrests	0	1	0	1	-100%	-100%
Calls For Service	239	287	812	827	-17%	-2%
Alarms	1	1	7	2	0%	250%
Parking Citations	0	0	0	0	N/C	N/C
Written Warnings	102	70	395	225	46%	76%
<b>TOTALS</b>	<b>679</b>	<b>1010</b>	<b>2255</b>	<b>2716</b>	<b>-33%</b>	<b>-17%</b>
Value of Asstes Seized	\$0	\$0	\$0	\$0	N/C	N/C
Patrol Miles	3,517	6,211	10,080	16,868	-43%	-40%
Hours Worked	669	810.5	1629.5	2357	-17%	-31%





### PARKING ENFORCEMENT

The Parking Enforcement Division is responsible for enforcing parking laws in the downtown area. This service provides a safe and convenient parking situation for the public.

CITATIONS ISSUED	This Month	This Month Last Year	YTD	Last YTD	Change By Month	Change YTD
Citations	35	73		144	-52%	-100%
Verbal Warnings	12				N/C	N/C
MINUTES BY ACTIVITY	This Month	This Month Last Year	YTD	Last YTD	Change By Month	Change YTD
Office	515	565	1,635	4,775	-9%	-66%
Admin(Non-Office)	1,100	630	2,520	1,330	75%	89%
Community	0				N/C	N/C
Training	0				N/C	N/C
Patrol	5,165	5,645	13,610	12,400	-9%	10%

### ANIMAL CONTROL

The Animal Control Division is responsible for educating the public on safe and humane issues regarding animal treatment, enforcing all animal laws and ordinances, assisting the

public in resolving animal issues, and protecting the safety and welfare of the citizens and animals in this community.

Incidents	This Month	This Month Last Year	YTD	Last YTD	Change By Month	Change YTD
Barking Complaints	19	13	43	19	46%	126%
Bite Reports	14	4	29	13	250%	123%
Door Hangers	41	55	96	98	-25%	-2%
Welfare Checks	91	133	277	251	-32%	10%
Advised of Rights	641	235	1,606	620	173%	159%
Incident Reports	2	6	5	26	-67%	-81%
Gone on Arrival	39	34	97	104	15%	-7%
Complaints	702	853	1,874	2,014	-18%	-7%
Desk Complaints	1,696	1,015	4,476	2,733	67%	64%
Captured Dogs	139	133	406	381	5%	7%
Captured Cats	5	11	13	32	-55%	-59%
Captured Wildlife	12	29	35	45	-59%	-22%
Chemical Captures	7	6	14	20	17%	-30%
Traps	13	24	31	43	-46%	-28%
Deceased Animals	64	108	204	252	-41%	-19%
Assist J.P.D.	10	11	25	25	-9%	0%
Assist C.S.O.	3	0	5	0	N/C	N/C
Public Relations	914	662	2,123	1,513	38%	40%
CITATIONS ISSUED	94	72	275	116	31%	137%
WARNINGS ISSUED	56	84	151	153	-33%	-1%
Physical Arrests	4	2	6	2	100%	200%
City Warrants Served	3	0	21	0	N/C	N/C
County Warrants Served	0	0	0	0	N/C	N/C
Euthanized	58	70	136	160	-17%	-15%
Euthanized for Humane Society					N/C	N/C
Deceased Animals Landfill lbs.	3,760	5,180	9,280	12,100	-27%	-23%
Wildlife Euthanized	12	29	35	45	-59%	-22%
Sent to Rescue Centers	0	8	12	35	-100%	-66%
Adoptions	36	39	124	121	-8%	2%
Miles Driven	7,964	9,659	21,049	23,887	-18%	-12%

## FLEET MAINTENANCE

The Fleet Maintenance is responsible for all of the police vehicle maintenance upkeep, cleanliness, and purchasing. In addition, this Division handles most of the purchasing of equipment, supplies, and uniforms for all of the Police Department.

Repair Costs by Model Year	This Month	This Month Last Year	YTD	Last YTD	Change By Month	Change YTD
95-99	\$0.00	\$0.00	\$0.00	\$0.00	N/C	N/C
2000	\$0.00	\$0.00	\$150.44	\$195.02	N/C	-23%
2001	\$0.00	\$0.00	\$11.61	\$21.40	N/C	-46%
2002	\$0.00	\$0.00	\$0.00	\$2,054.11	N/C	-100%
2003	\$0.00	\$0.00	\$0.00	\$0.00	N/C	N/C
2004	\$499.10	\$2,121.14	\$781.92	\$4,608.30	-76%	-83%
2005	\$2,633.66	\$564.01	\$3,296.60	\$2,899.52	367%	14%
2006	\$58.05	\$1,394.54	\$5,683.41	\$9,727.06	-96%	-42%
2007	\$956.80	\$237.42	\$2,262.12	\$1,768.01	303%	28%
2008	\$22.00	\$22.46	\$1,186.95	\$22.46	-2%	5185%
2009	\$11.61	\$11.23	\$96.03	\$11.23	N/C	N/C
2010	\$0.00	\$0.00	\$0.00	n/a	N/C	N/C
<b>TOTALS</b>	<b>\$4,181.22</b>	<b>\$4,350.80</b>	<b>\$13,469.08</b>	<b>\$21,307.11</b>	<b>-4%</b>	<b>-37%</b>



<b>Routine Preventative Maintenance by Model Year</b>	<b>This Month</b>	<b>This Month Last Year</b>	<b>YTD</b>	<b>Last YTD</b>	<b>Change By Month</b>	<b>Change YTD</b>
95-99	\$0.00	\$0.00	\$0.00	\$0.00	N/C	N/C
2000	\$20.00	\$29.00	\$20.00	\$29.00	-31%	-31%
2001	\$28.00	\$0.00	\$28.00	\$40.00	N/C	-30%
2002	\$0.00	\$0.00	\$10.30	\$0.00	N/C	N/C
2003	\$29.00	\$84.37	\$29.00	\$164.37	-66%	-82%
2004	\$430.39	\$632.73	\$1,063.51	\$1,777.59	-32%	-40%
2005	\$415.70	\$797.26	\$1,226.94	\$1,401.01	-48%	-12%
2006	\$2,100.98	\$1,059.12	\$5,381.49	\$4,049.99	98%	33%
2007	\$719.86	\$618.00	\$2,425.47	\$4,612.65	16%	-47%
2008	\$20.00	\$614.27	\$493.07	\$764.27	-97%	-35%
2009	\$324.31	\$0.00	\$605.77	\$110.02	N/C	N/C
2010	\$831.37	\$394.00	\$831.37	\$394.00	N/C	N/C
<b>TOTALS</b>	<b>\$4,919.61</b>	<b>\$4,228.75</b>	<b>\$12,114.92</b>	<b>\$13,342.90</b>	<b>16%</b>	<b>-9%</b>

## RECORDS

The Records Division is responsible for providing administrative and clerical support to the department. Major responsibilities include entering the accident and incident reports and tickets into the records database management system, assisting the general public for report requests, performing criminal backgrounds, serving as a switchboard at times, performing validations, and setting up and managing the payment plans out of court.

<b>RECORDS</b>	<b>This Month</b>	<b>This Month Last Year</b>	<b>YTD</b>	<b>Last YTD</b>	<b>Change By Month</b>	<b>Change YTD</b>
Incident/Arrest Reports Processed	1,411	1,250	3,810	3,518	13%	8%
Accident Reports Processed	218	191	585	558	14%	5%
Citations Processed	4,795	4,665	13,596	12,412	3%	10%
Warnings Processed	960	461	2,213	1,068	108%	107%
Backgrounds	40	15	82	47	167%	74%
Fingerprints	84	105	349	332	-20%	5%
Photos	10	4	10	4	150%	150%
Accident Requests	107	102	289	288	5%	0%
Accident Requests Online	173	168	473	447	3%	6%
<b>TOTALS</b>	<b>7,798</b>	<b>6,961</b>	<b>21,407</b>	<b>18,674</b>	<b>12%</b>	<b>15%</b>

## PROFESSIONAL STANDARDS

The Office of Professional Standards, a unit within Administration, is charged with the compilation and updating of an extensive set of policies and procedures and providing a general operations guideline and code of conduct for officers to follow. In the event that a member of the public does experience a negative interaction with an officer, mechanisms are in place for them to lodge a complaint. All complaints are reviewed and investigations completed in a timely manner.

<b>Professional Standards</b>	<b>This Month</b>	<b>This Month Last Year</b>	<b>YTD</b>	<b>Last YTD</b>	<b>Change By Month</b>	<b>Change YTD</b>
Opened (TOTAL)	3	5	15	22	-40%	-32%
Closed	3	4	13	21	-25%	-38%
Inquiries	3	5	14	21	-40%	-33%
Formal Investigations	0	0	1	1	N/C	0%
Sustained	3	2	10	16	50%	-38%
Not-Sustained	0	1	0	2	-100%	-100%
Exhonerated	0	0	0	1	N/C	-100%
Unfounded	0	2	3	3	-100%	0%