

JONESBORO POLICE DEPARTMENT

Monthly Report

April 2013

IN THIS REPORT

CRIME ANALYSIS	1
Total Crime	2
Crimes against Person	3
Property Crimes	4
Crimes of Proactive Policing	5
Other Crimes.....	6
Arrests Demographics	7
EMERGENCY 911	9
UPD	10
_PROWL	10
CID	11
WARRANTS	12
DRUG TASK FORCE	13
TRAFFIC	14
Maps	15
ANIMAL CONTROL	16
FLEET MAINTENANCE	16
RECORDS	17
PROFESSIONAL	
STANDARDS	18

The purpose of the Jonesboro Police Department Monthly Report is to compile data into one integrated report for review, allowing for a seamless flow of information for better decision-making. After each department collates their monthly numbers and sends it to the Office of Crime Analysis, it is organized into sections of departmental data, analyzed and packaged, and finally disseminated to department heads, the Chief of Police, the City Mayor, and the City Council. Major sections include Crime Analysis, Emergency 911, Uniform Police Division, Prowl, Criminal Investigative Division, Warrants, Drug Task Force, Traffic, Parking Enforcement, Animal Control, Fleet Maintenance, Records, and Professional Standards.

CRIME ANALYSIS

The Crime Analysis division consists of one Crime Analyst and one part-time Crime Analyst Assistant. The Crime Analyst position is responsible for the analysis and dissemination of crime activity data and the collection and maintenance of crime intelligence information for the city of Jonesboro. Additionally, the Crime Analyst is charged with providing the department with current and accurate crime maps, presenting crime activity data to audiences of interest, and with responding to requests for crime data from civilians and departmental staff. Data exported from this division is used by field agents for more effective, efficient policing, administration for improved staffing decisions, and the Mayor's office for community decision making and enhanced public relations. The following section is broken down into Total Crime, Crimes against Persons, Property Crimes, Crimes of Proactive Policing, Other Crimes, Arrest Demographics, and Total Crime Monthly Comparison.

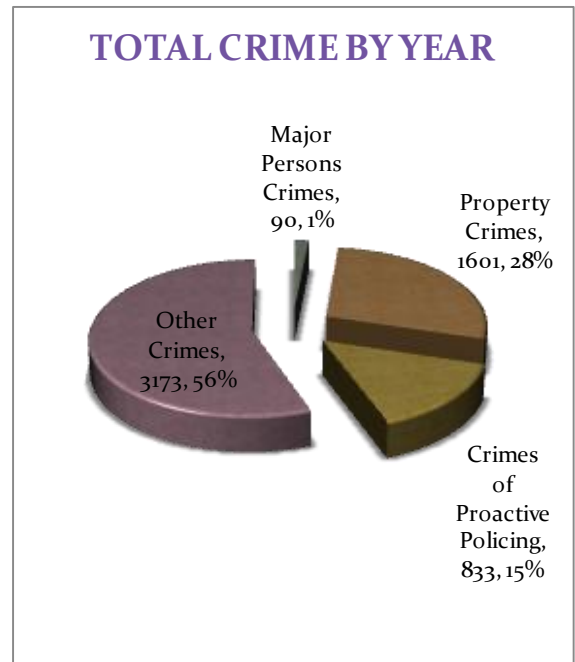
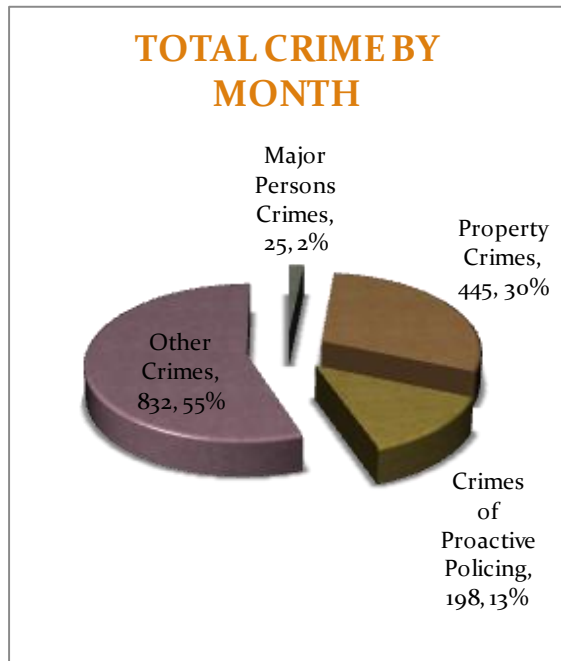
MONTHLY REPORT APRIL 2013

May 9, 2013

TOTAL CRIME

The crime activity for the month of April 2013 was at a total of 1,500 NIBRIS reportable offenses, a 4% decrease, comparing to the total of offenses reported in April of the last year. With Jonesboro population estimated to be equal to 69,856, the crime rate in April of this year was at 21 crimes per 1,000 population, comparing to 23 crimes per 1,000 population last year¹, a 5% decrease. As indicated on a pie chart below, Other Crimes absorb the majority, 55%, of this month's crime activity ($n = 832$). Property Crimes fall into a second place and comprise of 30% of all the crimes ($n = 445$). Following in third and fourth places are, respectively, Crimes of Proactive Policing comprising of 13% ($n = 198$) of all the crimes, and Crimes against Persons, comprising of 2% ($n = 25$) of all the crimes this month.

Year to date data includes number of crimes from January through April 2013. A total of 5,697 NIBRIS reportable offenses were reported in 2013, an 11% decrease, comparing to the same period last year. The year to date crime rate amounts to 82 offenses per 1,000 population, compared to 94 offenses per 1,000 population last year (down 13%). To date this year, 56% of all the crimes is attributed to Other Crimes category ($n = 3,173$). Property Crimes amount to 28% of all the crimes ($n = 1601$), Crimes of Proactive Policing comprise of 15% of all the crimes to date, where $n = 833$; Crimes against Persons comprise of 1% of a total year to date number of crimes ($n = 90$).

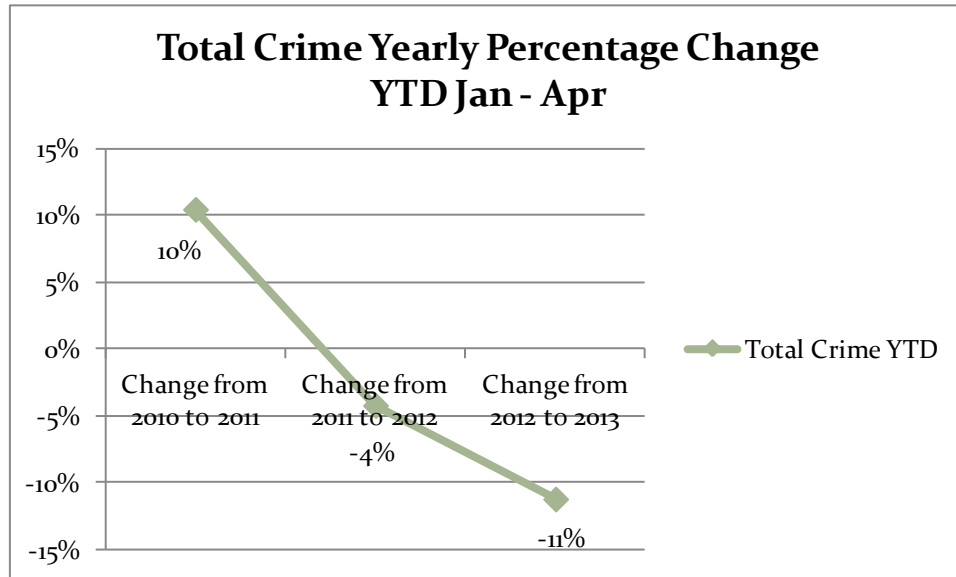
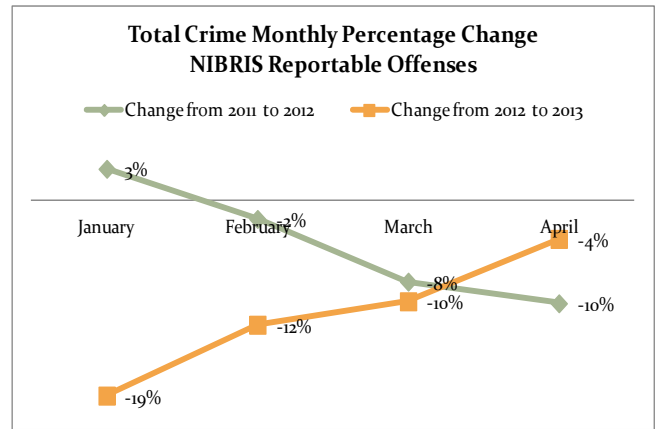
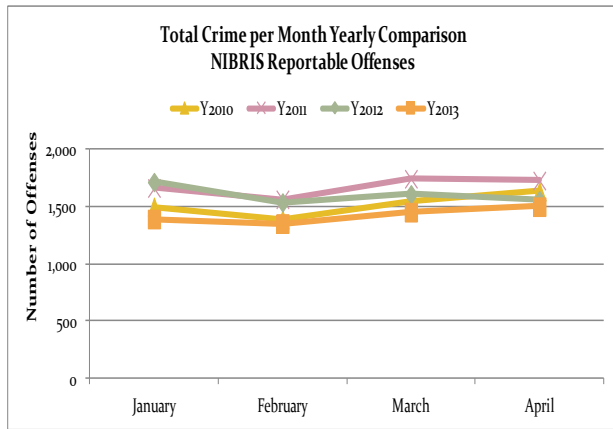


Line charts on the following page depict frequencies of crime and a monthly and yearly percentage change from the last year.

¹ Note: Population numbers are based on 2011 & 2012 population estimate, where 2011 population estimate is 68,547.

MONTHLY REPORT APRIL 2013

9 May 2013



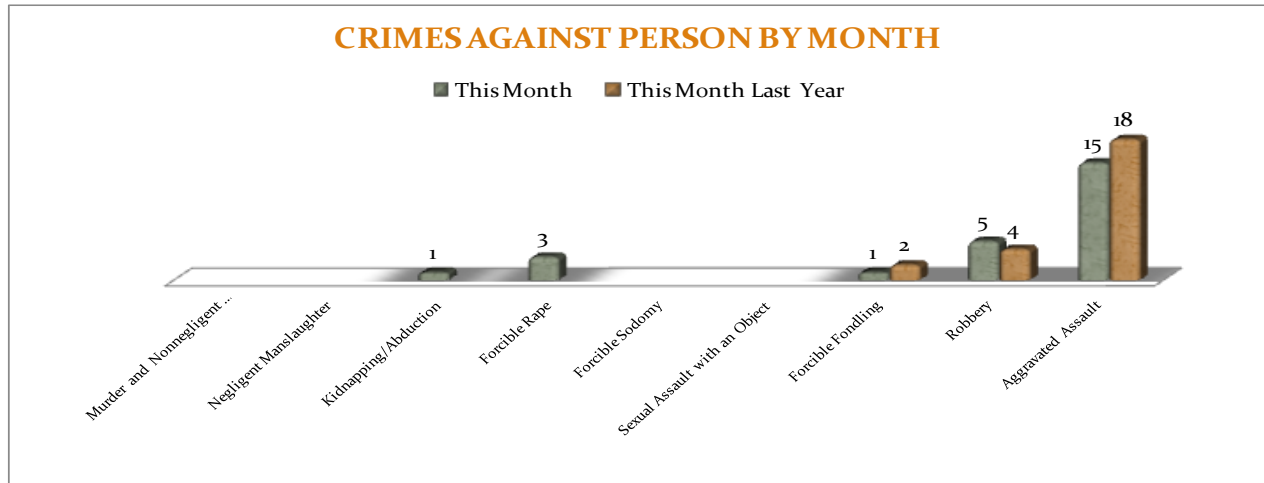
CRIMES AGAINST PERSONS

There are 9 crimes that make up this section. There were a total of 25 offenses in this area in April this year, a 1 more offense, when comparing to the last year's total in April.

Aggravated Assaults are down 17%. As demonstrated on the bar chart below, there are no significant changes in frequencies for the crimes in this category.

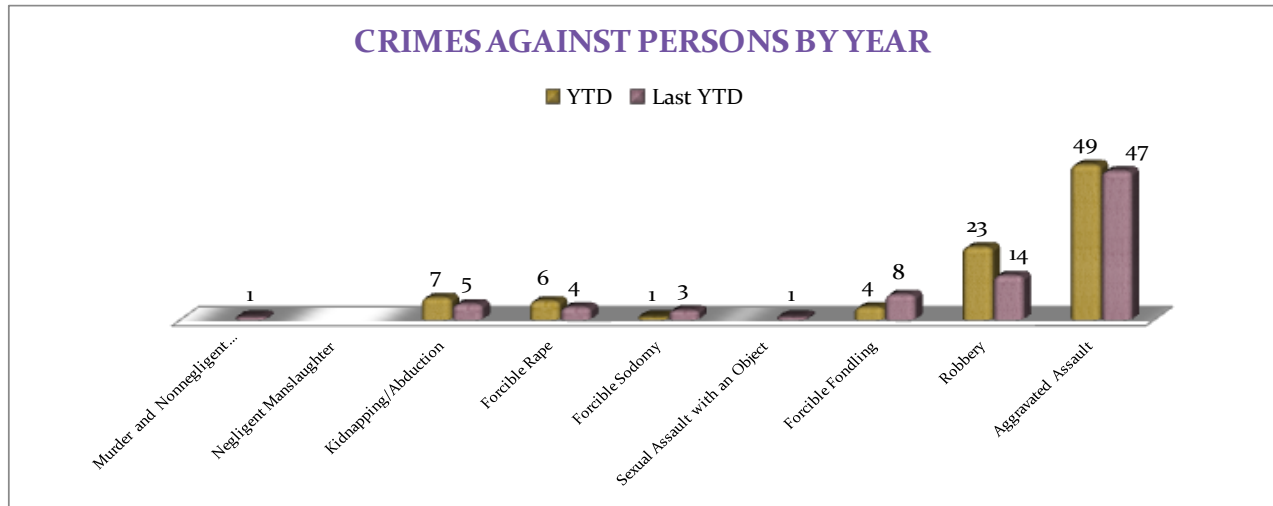
MONTHLY REPORT APRIL 2013

9 May 2013



A bar graph below shows the year to date data for Crimes against Persons, which amounts to a total of 90 incidents for this category of crimes, an 8% increase, comparing to the year to date data of last

year. There were nine more Robberies to date this year, resulting in escalation of the overall percentage change. There are no other significant changes in frequencies for the crimes in this category.



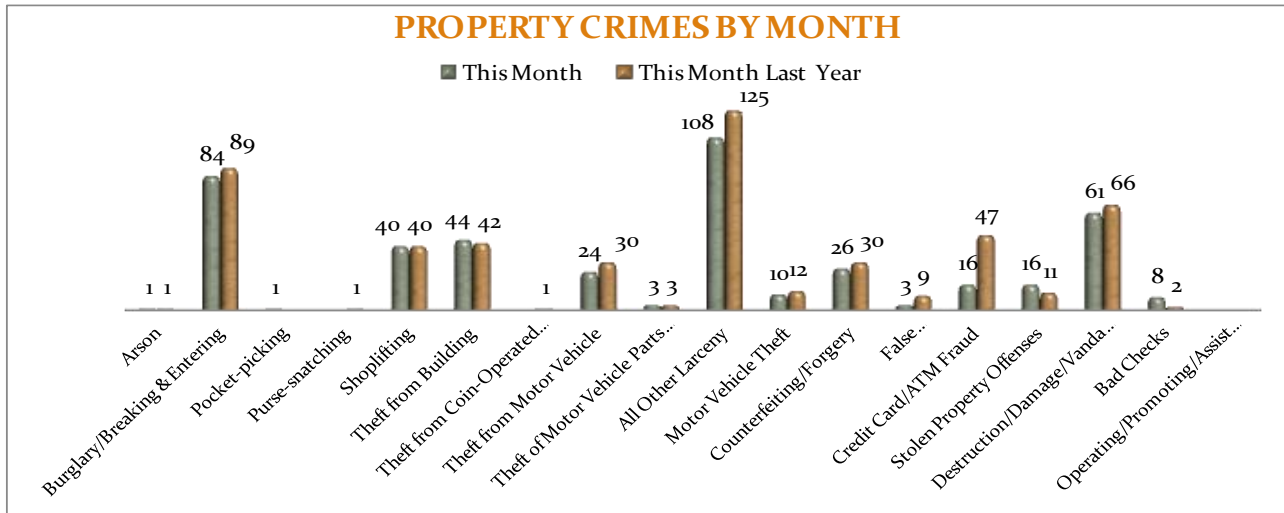
PROPERTY CRIMES

This section displays the criminal activity for 18 crimes, all against property. This month, there were a total of 445 Property Crimes, a 13% decrease comparing to April of the last year. The data indicates a significant change

in Credit Card/ATM Fraud (down 66%) and in All Other Larceny (down 14%). No other significant changes are noted this month for this crime category.

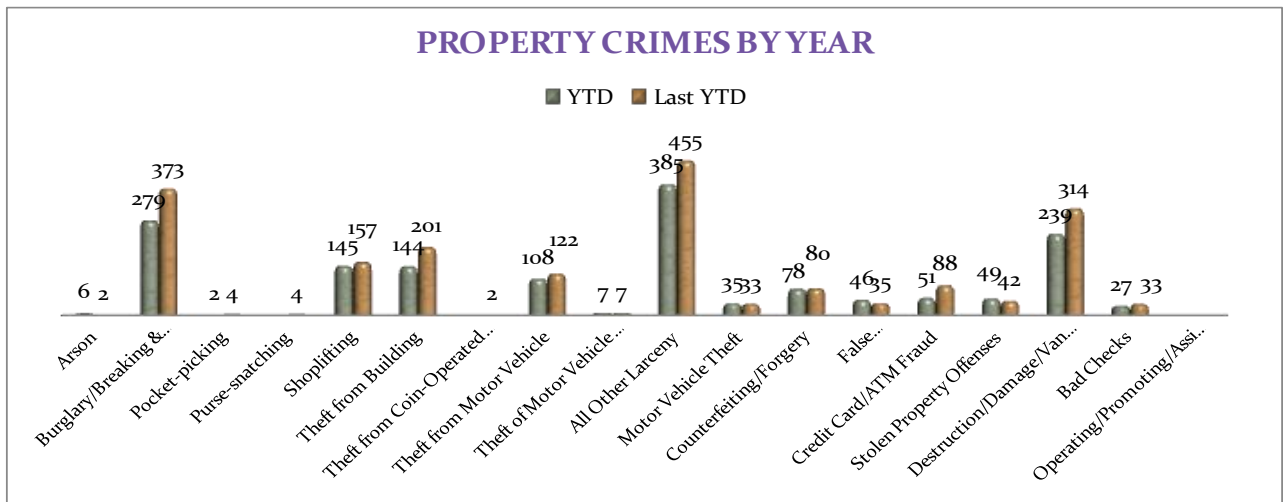
MONTHLY REPORT APRIL 2013

9 May 2013



To date this year, 1601 property offenses have occurred, an 18% decrease, comparing to the last year's data at this same time. The following significant changes are noted this year: Credit Card/ATM Fraud is down, -42%; Theft from Building is down, -28%,

Destruction/ Damage/Vandalism of Property is down, -24%, and All Other Larceny is down, -15%. There are no other statistically significant changes noted for other offenses in this category.



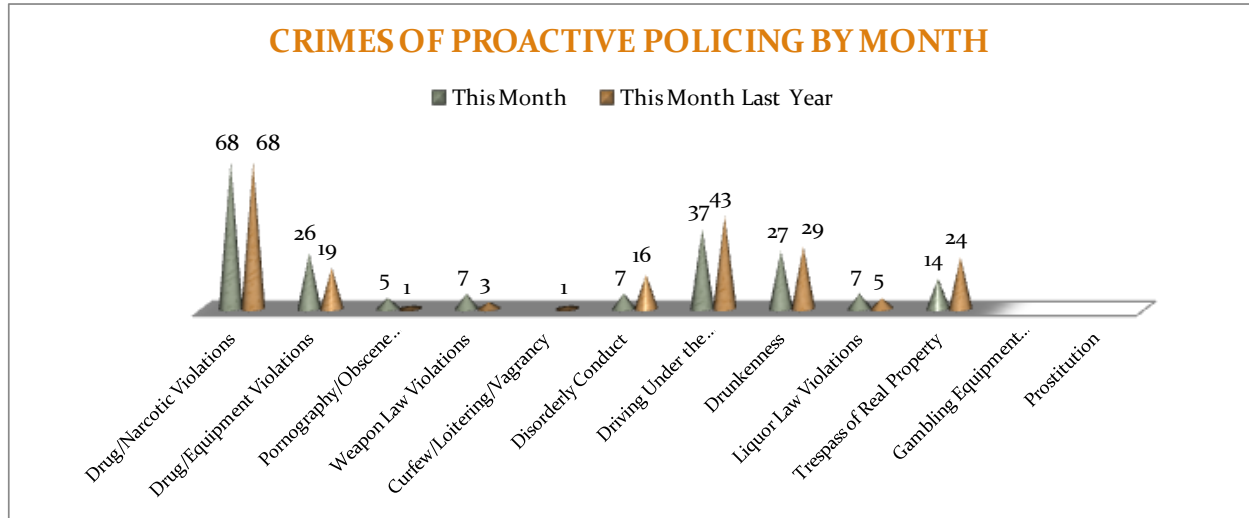
CRIMES OF PROACTIVE POLICING

Crimes of Proactive Policing are those crimes that result from police officers actively policing the streets to combat certain types of street crime. As a chart below indicates, twelve crimes fall under this category. A total of 198 offenses have been reported this month, a 5% decrease, comparing to April of

the last year. Drug/Equipment Violations are up, +37%. Driving under the Influence is down, -14% and Disorderly Conduct is down, -56%. There are no other statistically significant changes noted for other offenses in this category.

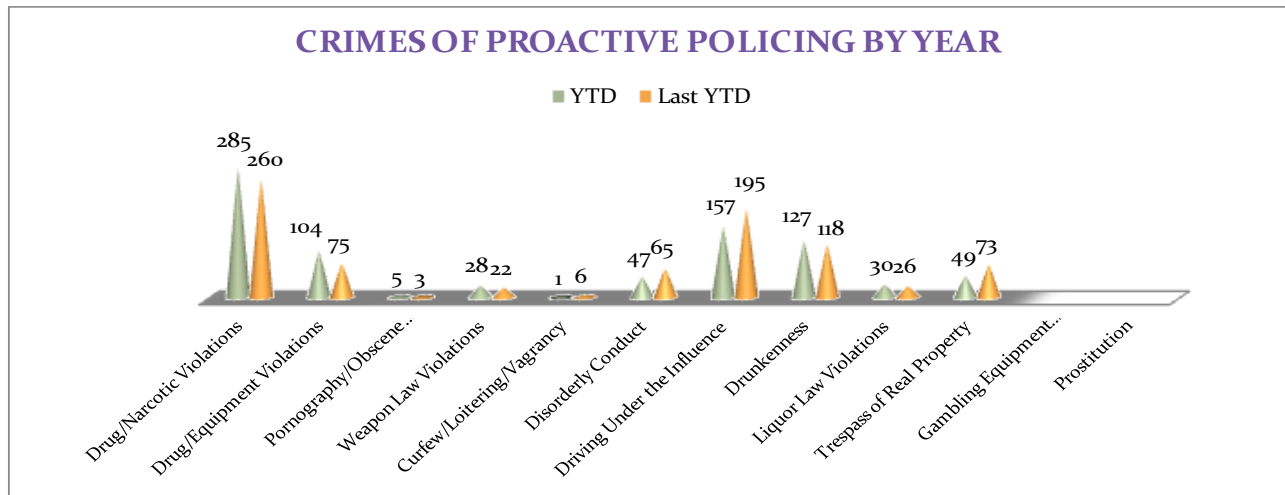
MONTHLY REPORT APRIL 2013

9 May 2013



To date for the year 2013, there have been 833 crimes of proactive policing reported, a 1% decrease when comparing to the last year's to date data. Drug/ Narcotic Violations are up 10%, Drug / Equipment Violations are

up 39%, and Drunkenness is up 8%, while Driving Under Influence is down 19% and Disorderly Conduct is down 28%. There are no other statistically significant changes noted for other offenses in this category.



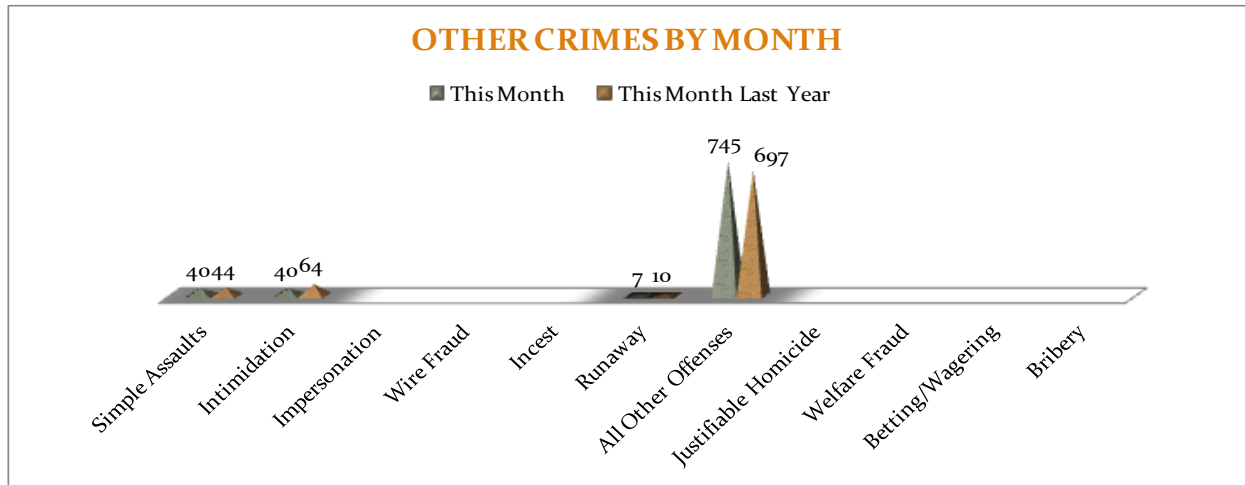
OTHER CRIMES

There are 11 crimes that fall into the Other Crimes category. This month, there have been a total of 832 Other Crimes reported, a 2% increase, comparing to April of the last

year. Intimidation decreased by 38%, while All Other Offences increased by 7%. No other significant changes are noted in this category of crimes this month.

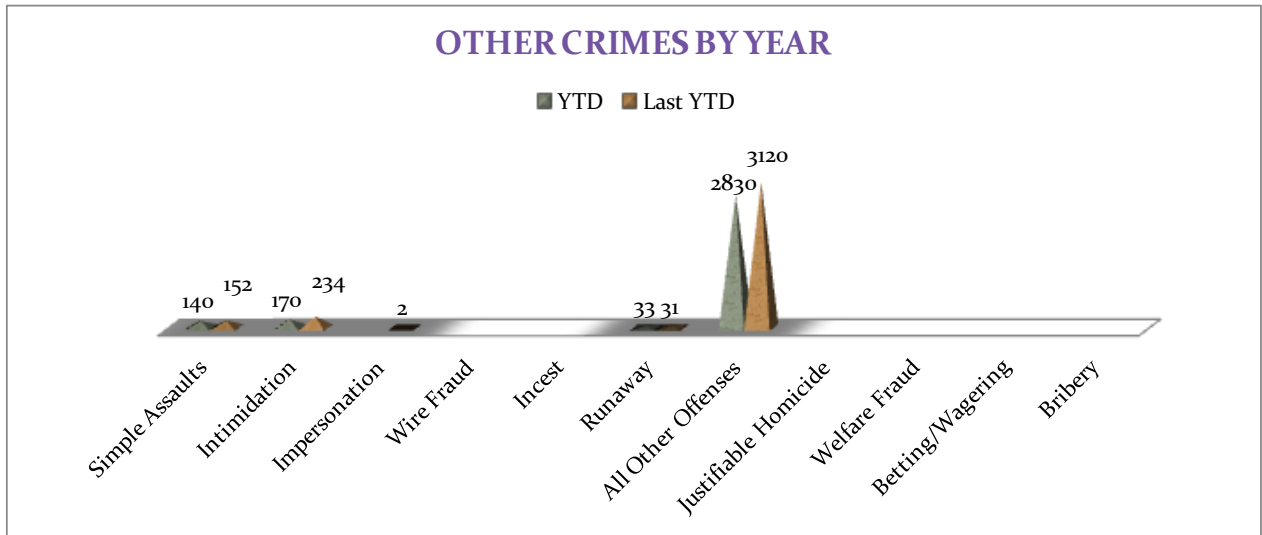
MONTHLY REPORT APRIL 2013

9 May 2013



To date this year, there have been 3,539 Other Crimes offenses reported, a 10% decrease comparing to the last year's to date data. Intimidation offenses are down 27%, Simple Assaults decreased by 8%, and All

Other Offenses decreased by 9%. No other significant changes have been observed for other offenses within this category, comparing to the last year's data.



ARREST DEMOGRAPHICS

In April 2013, there were a total of 935 arrests carried out by the Jonesboro Police Department. Comparing with the last year's data for the month of April, there was a 14%

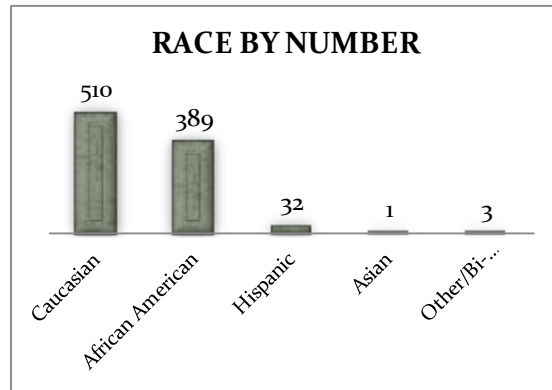
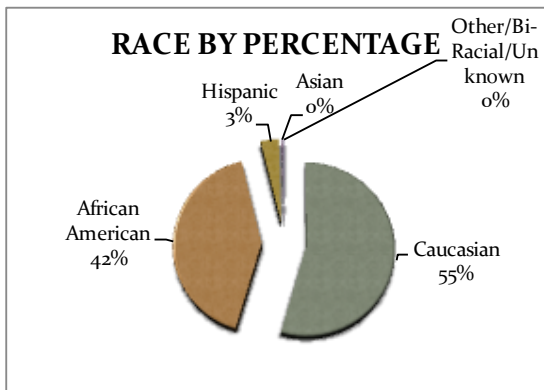
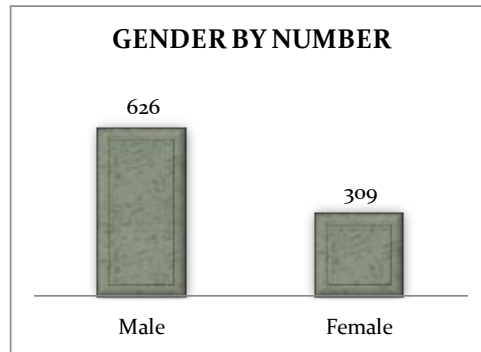
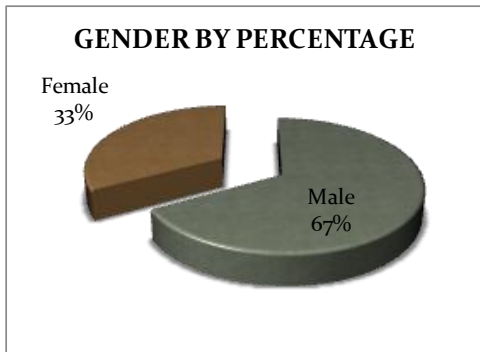
increase in arrests this month, which results in 62 arrests per 100 offenses in April of this year, comparing to 53 arrests per 100 offenses last year, an 18% increase for arrests per 100

MONTHLY REPORT APRIL 2013

9 May 2013

offenses. This section breaks down this month's arrests by race and gender. The majority of arrestees, 67%, have been male ($n = 626$), as opposed to 33% of female arrestees ($n = 309$). As for the racial/ethnic

composition, the majority of arrestees have been Caucasian (55%) and African American (42%) as opposed to Hispanic (3%), Asian (0%), or other/unknown/bi-racial (0%).

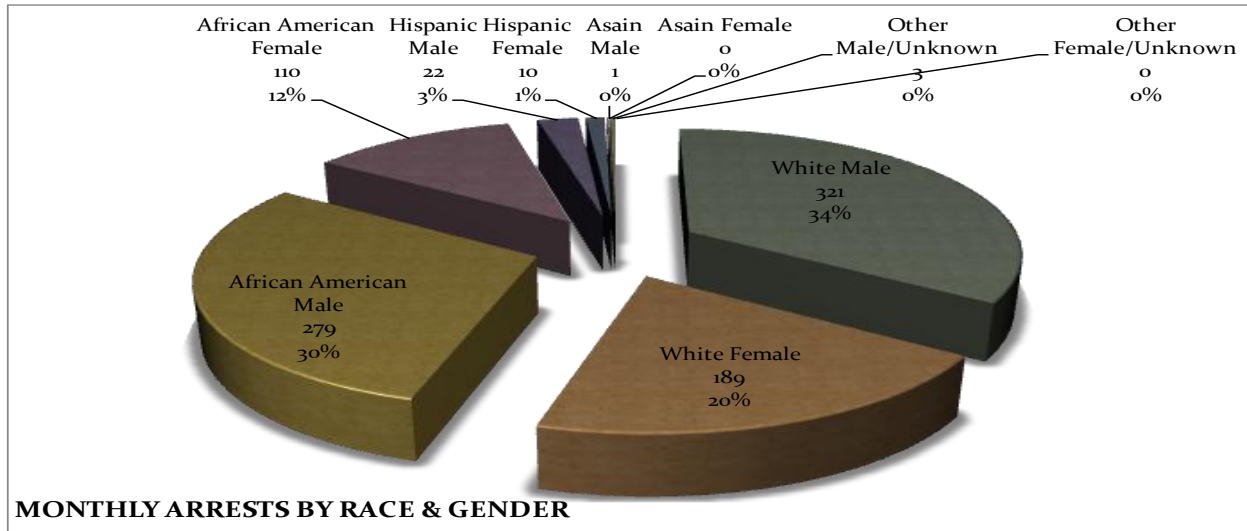


Caucasian males make up the majority, 34%, of arrestees this month ($n = 321$). African American males make up 30% of arrestees for the month of April ($n = 279$). Caucasian females make up 20% ($n = 189$) and African American females make up 12% ($n = 110$) of arrestees this month. Hispanic males make

up 3% ($n = 28$), Hispanic Male make up 3% of arrestees this month ($n = 22$), while Hispanic Females make up 1% of arestees this mont ($n = 10$). There were 1 Asain male and 3 Males of unknown race or ethnicity arested in April.

MONTHLY REPORT APRIL 2013

9 May 2013



EMERGENCY 911

Also known as Public Safety Answering Point (PSAP), the Emergency 911 Division is responsible for answering all calls from public for emergency assistance, accessing the needed information to best assist, and then assigning the most efficient and effective emergency response. In addition,

this division is responsible for setting priority call dispatching to field units including Police, Fire, and EMS. Emergency 911 also maintains all records for radio logs, calls for service, and other emergency service data collections.

Calls by Type	This Month	This Month Last Year	YTD	Last YTD	Change By Month	Change YTD
Land Line E911	652	775	2,770	3,053	-16%	-9%
Cell Phone E911	4,187	3,828	15,904	15,622	9%	2%
Admin Lines-non emer	14,542	15,678	56,814	61,942	-7%	-8%
TOTALS	19,381	20,281	75,488	80,617	-4%	-6%
Calls by Agency	This Month	This Month Last Year	YTD	Last YTD	Change By Month	Change YTD
Jonesboro PD Calls	6,841	6,752	26,004	27,539	1%	-6%
Craighead Cty Sheriff	1,175	1,160	4,747	5,036	1%	-6%
Jonesboro Fire Dpt - dispatch	210	232	820	849	-9%	-3%
Jonesboro Fire Dpt - Med Asst	126	126	536	433	0%	24%
Craighead Cty - Fire	49	66	170	273	-26%	-38%
Craighead Cty - 1st Responder	105	113	408	419	-7%	-3%
Emerson Ambulance	243	373	1,117	1,088	-35%	3%
Medic One	313	236	1,218	1,064	33%	14%
Air Evac	0	2	2	3	-100%	-33%
Coroner	3	2	17	13	50%	31%
ARK State Police	10	19	36	61	-47%	-41%
Jonesboro Animal Control	1	1	8	5	0%	60%
Wreckers Called	162	151	699	641	7%	9%
TOTALS	9,238	9,233	35,782	37,424	0%	-4%

MONTHLY REPORT APRIL 2013

9 May 2013

Calls by Municipality	This Month	This Month Last Year	YTD	Last YTD	Change By Month	Change YTD
Bay PD	140	70	454	462	100%	-2%
Bono PD	250	259	1059	1048	-3%	1%
Brookland PD	132	133	430	738	-1%	-42%
Caraway PD	50	127	288	656	-61%	-56%
Cash PD	5	31	11	99	-84%	-89%
Egypt PD	7	8	17	35	-13%	-51%
Lake City PD	132	158	478	648	-16%	-26%
Monette PD	114	147	395	669	-22%	-41%
TOTALS	830	933	3,132	4,355	-11%	-28%

UNIFORM PATROL DIVISION

The UPD is responsible for responding to calls into the Emergency - 911 Division by civilians and are normally the first responders. Jonesboro is divided into 6 patrol districts. Officers from UPD are

assigned to a district and work the same district every shift. In addition, when a Traffic Officer is not available, a UPD Officer will respond to traffic accidents and assist in directing traffic when necessary.

Incidents	This Month	This Month Last Year	YTD	Last YTD	Change By Month	Change YTD
Calls for Service	6,842	6,752	28,412	28,169	1%	1%
Complaints	3,831	4,138	17,237	15,785	-7%	9%
Assists	917	1,256	3,879	4,793	-27%	-19%
Incident Reports	896	897	3,254	3,378	0%	-4%
Street Accidents	71	90	278	295	-21%	-6%
Private Property Accidents	34	59	150	191	-42%	-21%
Traffic Stops	2,125	1,679	9,649	8,547	27%	13%
Traffic Citations	609	626	2,417	2,760	-3%	-12%
Written Warnings	980	871	3,860	3,570	13%	8%
DWI	30	31	130	164	-3%	-21%
Mis. Arrests	477	446	1,732	1,895	7%	-9%
Felony Arrests	95	79	426	354	20%	20%
Warrants Served	1,222	1,237	3,207	5,369	-1%	-40%
Alarms	313	269	1,119	1,259	16%	-11%
TOTALS	18,442	18,430	75,750	76,529	0%	-1%
Hours Worked	7,124	9,035	29,323	36,162	-21%	-19%

PROWL

The Prowl unit is a uniformed street crimes unit specializing in criminal patrol, narcotics enforcement, gang investigation, and prostitution activity. The unit conducts directed patrols, investigates citizen

complaints of street-level criminal activity, and directly assists the 2nd Judicial Drug Task Force. PROWL also assists any division within the Jonesboro Police Department at any time when needed.

MONTHLY REPORT APRIL 2013

9 May 2013

Incidents	This Month	This Month Last Year	YTD	Last YTD	Change By Month	Change YTD
Street Accidents	0	0	0	0	N/C	N/C
Private Property Accidents	1	1	1	1	0%	0%
Traffic Citations	18	49	60	121	-63%	-50%
DWI	0	1	0	1	-100%	-100%
Mis. Arrests	152	372	445	720	-59%	-38%
Felony Arrests	24	33	99	111	-27%	-11%
Drug Arrests	31	34	123	120	-9%	3%
Public Intoxication Arrests	0	1	0	1	-100%	-100%
Calls For Service	84	89	250	290	-6%	-14%
Alarms	0	0	0	0	N/C	N/C
Parking Citations	0	0	0	0	N/C	N/C
Written Warnings	70	35	235	164	100%	43%
Assists	0	0	0	0	N/C	N/C
TOTALS	380	615	1,213	1,529	-38%	-21%
Value of Drugs Seized	\$ 23,000	\$ 3,180	\$ 58,840	\$ 39,265	623%	50%
Value of Asstes Seized	\$ -	\$ 861	\$ 3,053	\$ 24,218	-100%	-87%
Patrol Miles	7,550	5,800	29,200	23,250	30%	26%

CRIMINAL INVESTIGATIVE DIVISION

The CID is responsible for conducting follow-up investigations into criminal acts reported to the Jonesboro Police Department. The primary goal is to collect and present evidence that conclusively leads

to a successful arrest. Additionally, CID is charged with clearing additional crimes, recovering stolen property, preventing additional crimes, and gathering intelligence information.

Investigations	This Month	This Month Last Year	YTD	Last YTD	Change By Month	Change YTD
Criminal Investigations Assigned	117	72	441	258	63%	71%
Criminal Investigations Closed	86	38	309	179	126%	73%
Cleared by Arrests	62	25	200	121	148%	65%
Unfounded	8	4	28	20	100%	40%
Exceptionally Cleared	13	4	50	16	225%	213%
Filed With Prosecutors Office	3	3	23	13	0%	77%
TOTALS	289	146	1051	607	98%	73%
Crimes Against Persons	This Month	This Month Last Year	YTD	Last YTD	Change By Month	Change YTD
Criminal Investigations Assigned	26	23	96	62	13%	55%
Criminal Investigations Closed	29	12	102	51	142%	100%
Cleared by Arrests	25	11	74	40	127%	85%
Unfounded	2	0	10	4	N/C	150%
Exceptionally Cleared	2	0	11	2	N/C	450%
Filed With Prosecutors Office	0	1	7	6	-100%	17%
TOTALS	84	47	300	165	79%	82%
Property Crimes	This Month	This Month Last Year	YTD	Last YTD	Change By Month	Change YTD
Criminal Investigations Assigned	84	46	312	179	83%	74%
Criminal Investigations Closed	51	20	167	109	155%	53%
Cleared by Arrests	35	14	116	79	157%	47%
Unfounded	3	2	10	14	50%	-29%
Exceptionally Cleared	10	4	33	13	150%	154%
Filed With Prosecutors Office	2	2	8	5	0%	60%
TOTALS	186	88	646	399	111%	62%

MONTHLY REPORT APRIL 2013

9 May 2013

Crimes Against Children	This Month	This Month Last Year	YTD	Last YTD	Change By Month	Change YTD
Criminal Investigations Assigned	7	1	26	7	600%	271%
Criminal Investigations Closed	6	0	32	6	N/C	433%
Cleared by Arrests	1	0	10	2	N/C	400%
Unfounded	3	2	9	3	50%	200%
Exceptionally Cleared	1	0	5	1	N/C	400%
Filed With Prosecutors Office	1	0	8	3	N/C	167%
TOTALS	19	3	90	22	533%	309%
Miscellaneous Investigations Assigned	0	2	7	8	-100%	-13%
Miscellaneous Investigations Cleared	0	2	3	6	-100%	-50%
FINGERPRINTS	This Month	This Month Last Year	YTD	Last YTD	Change By Month	Change YTD
Rolled for the Public	198	127	n/a	n/a	n/a	n/a

WARRANTS

The Warrants Division is responsible for serving warrants, criminal summonses, and subpoenas that are issued by the District Court. On city court days, the Warrants Division provides a bailiff for court and a transport officer. In addition, this Division is

responsible for transporting wanted persons arrested in other jurisdictions back to Jonesboro. The STEP program operates within this division and is a grant-funded operation in which officers can get paid overtime to enforce the safety belt law.

Arrests	This Month	This Month Last Year	YTD	Last YTD	Change By Month	Change YTD
Misdemeanor	1065	1199	3792	5417	-11%	-30%
Felony	0	0	0	2	N/C	-100%
Total Arrests	1065	1199	3792	5419	-11%	-30%

Warrants by Activity	This Month	This Month Last Year	YTD	Last YTD	Change By Month	Change YTD
Subpoenas	388	420	2325	1598	-8%	45%
Commitments	2	4	15	17	-50%	-12%
Traffic Citations	6	0	8	11	N/C	-27%
Complaints	4	3	9	4	33%	125%
Assist		1	2	1	-100%	100%
Alarms		0	0	0	N/C	N/C

Hours by Activity	This Month	This Month Last Year	YTD	Last YTD	Change By Month	Change YTD
SI Criminal	248	141	855.15	866.5	76%	-1%
Court	120	131	472.17	452.33	-8%	4%
Prisoner Transport	27	51.5	117.17	132	-48%	-11%

Hours Worked	This Month	This Month Last Year	YTD	Last YTD	Change By Month	Change YTD
Regular Hours Worked	639.5	559	2431.5	4153	14%	-41%
Overtime Hours Worked	2	3	12.8	18	-33%	-29%
TOTAL Hours Worked	641.5	562	2444.3	4171	14%	-41%

Mileage	This Month	This Month Last Year	YTD	Last YTD	Change By Month	Change YTD
Total Mileage	3336	2798	12026	10260	19%	17%

Note: STEP statistics are not included in this report

MONTHLY REPORT APRIL 2013

9 May 2013

DRUG TASK FORCE

The DTF is responsible for investigating major drug traffickers in the area, including all types of illegal drugs.

The DTF works closely with local, state, and federal agencies to eradicate drugs from the community.

INVESTIGATIONS	This Month	This Month Last Year	YTD	Last YTD	Change By Month	Change YTD
Opened	14	24	74	102	-42%	-27%
Closed	15	26	59	84	-42%	-30%
TOTAL	29	50	133	186	-42%	-28%
With Nexus to Jonesboro	This Month	This Month Last Year	YTD	Last YTD	Change By Month	Change YTD
Opened	17	25	78	98	-32%	-20%
Closed	0	0	0	0	N/C	N/C
TOTAL	17	25	78	98	-32%	-20%
Outside Jonesboro (No Known Nexus)	This Month	This Month Last Year	YTD	Last YTD	Change By Month	Change YTD
Opened	0	0	0	3	1300%	-100%
Closed	0	0	0	0	0%	N/C
TOTAL	0	0	0	3	N/C	-100%
ASSISTANCE RENDERED	This Month	This Month Last Year	YTD	Last YTD	Change By Month	Change YTD
Assist to Outside Agencies	0	2	0	9	-100%	-100%
Assist to Jonesboro UPD/CID	7	14	33	57	-50%	-42%
ARRESTS	This Month	This Month Last Year	YTD	Last YTD	Change By Month	Change YTD
Miscellaneous	6	8	24	38	-25%	-37%
Felony	17	32	101	115	-47%	-12%
Marijuana	3	8	25	17	-63%	47%
Cocaine	3	1	7	7	200%	0%
Crack Cocaine	0	9	4	15	-100%	-73%
Methamphetamine/ICE	6	9	38	37	-33%	3%
LSD	0	0	0	0	N/C	N/C
Extasy (MDMA or Other Designer Drug)	0	0	0	0	N/C	N/C
Prescription	5	3	15	8	67%	88%
Opiates (Heroin, Opium)	0	0	0	0	N/C	N/C
Labs	1	0	1	2	N/C	-50%
All Other Drug Offenses	4	6	33	10	-33%	230%
ASSET FORFEITURE	This Month	This Month Last Year	YTD	Last YTD	Change By Month	Change YTD
Vehicles Seized (No.)	\$ -	\$ -	\$ -	\$ -	N/C	N/C
Value of Assets Seized (Includes Value of vehicles)	\$ -	\$ -	\$ -	\$ 2,400.00	N/C	-100%
Asset Value Awarded to Jonesboro PD (State)	\$ -	\$ -	\$ -	\$ -	N/C	N/C
Asset Value Awarded to Jonesboro PD (Federal)	\$ -	\$ -	\$ -	\$ -	N/C	N/C
Asset Value Awarded to Jonesboro PD (Total)	\$ -	\$ -	\$ -	\$ -	N/C	N/C

MONTHLY REPORT APRIL 2013

9 May 2013

ARRESTS DEMOGRAPHICS	This Month	This Month Last Year	YTD	Last YTD	Change By Month	Change YTD
White	7	9	49	41	-22%	20%
African American	4	12	22	36	-67%	-39%
Latino	1	1	4	11	0%	-64%
Asian	0	0	0	0	N/C	N/C
Other/Bi-Racial	0	0	0	0	N/C	N/C
Male	12	18	58	66	-33%	-12%
Female	0	4	18	22	-100%	-18%
White Male	7	5	35	25	40%	40%
White Female	0	4	14	14	-100%	0%
African American Male	4	10	19	29	-60%	-34%
African American Female	0	0	3	6	N/C	-50%
Latino Male	1	1	3	9	0%	-67%
Latino Female	0	0	0	0	N/C	N/C
Asian Male	0	0	0	0	N/C	N/C
Asian Female	0	0	0	0	N/C	N/C
Other/Bi-Racial Male	0	0	0	0	N/C	N/C
Other/Bi-Racial Female	0	0	0	0	N/C	N/C

TRAFFIC

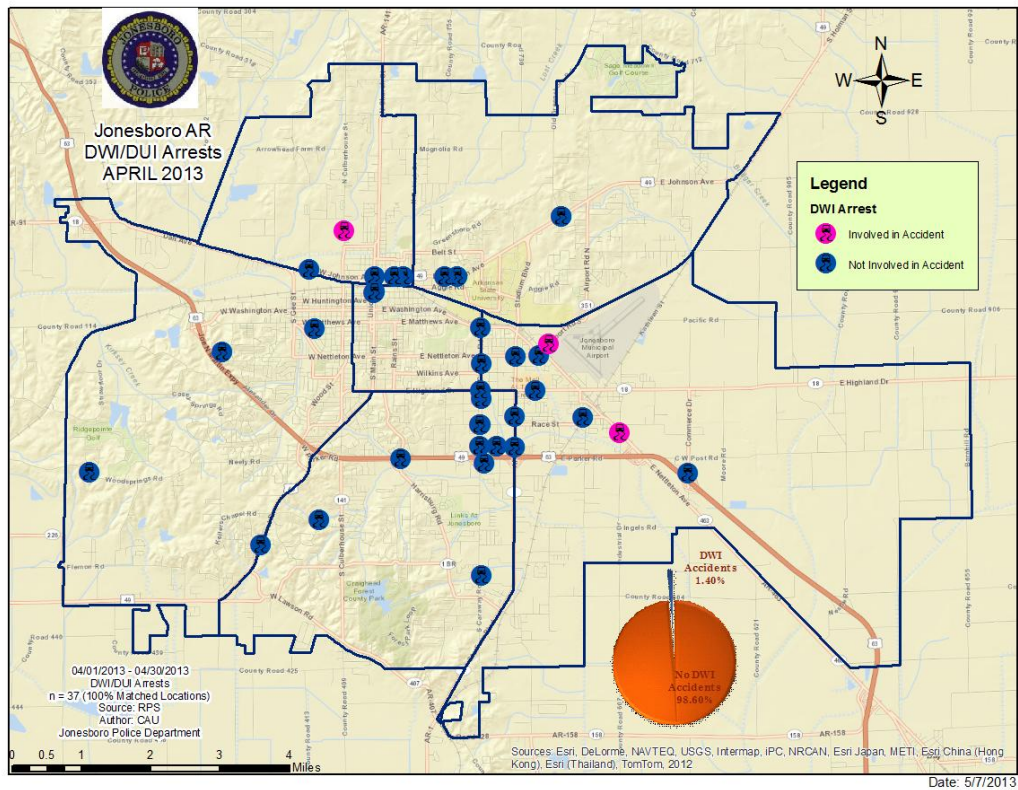
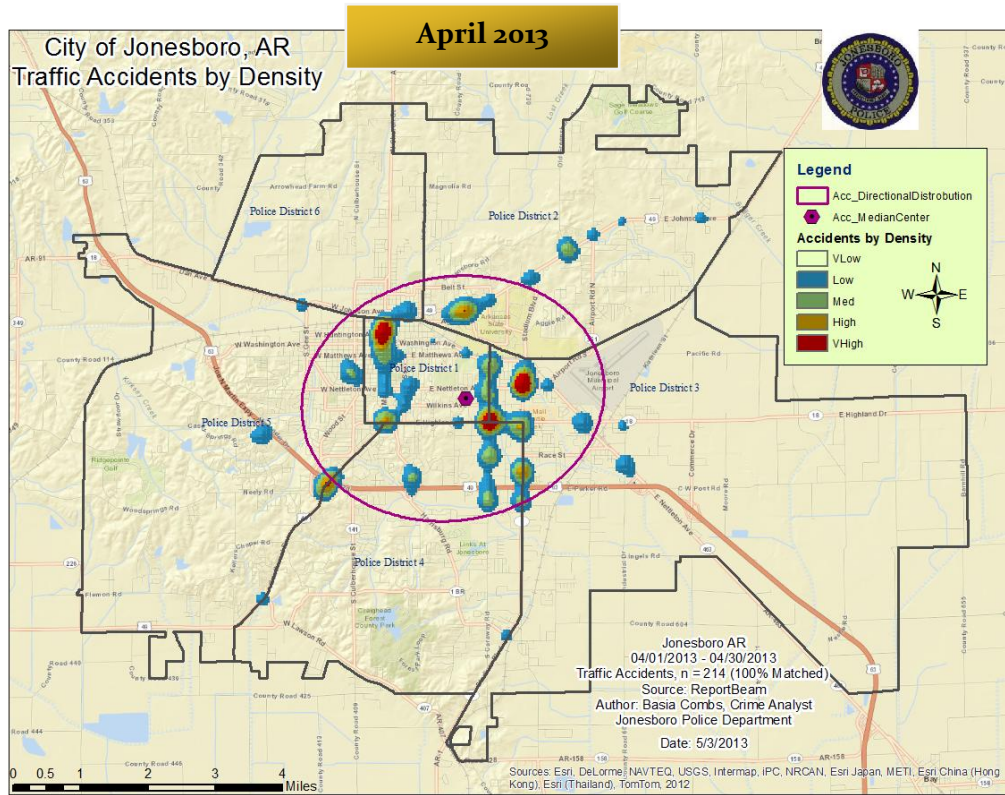
Comprised of three motor units and three Chargers, the Traffic Enforcement Unit responds to traffic accidents and provides increased enforcement in particularly challenging areas. This unit also provides

extra coverage for specific congestion problems and special events in the community. Last, they work details targeting specific issues, such as DWI enforcement and traffic safety checkpoints.

Incidents	This Month	This Month Last Year	YTD	Last YTD	Change By Month	Change YTD
Street Accidents	147	134	548	556	10%	-1%
Private Property Accidents	40	41	139	155	-2%	-10%
Traffic Citations	118	125	383	538	-6%	-29%
DWI	4	6	6	12	-33%	-50%
Mis. Arrests	6	32	23	32	-81%	-28%
Felony Arrests	2	1	4	1	100%	300%
Drug Arrests	0	0	0	0	N/C	N/C
Public Intoxication Arrests	0	0	0	0	N/C	N/C
Calls For Service	263	268	842	965	-2%	-13%
Alarms	0	0	0	0	N/C	N/C
Parking Citations	0	0	0	0	N/C	N/C
Written Warnings	144	110	373	423	31%	-12%
TOTALS	724	717	2318	2682	1%	-14%
Value of Asstes Seized	\$0	\$0	\$0	\$0	N/C	N/C
Patrol Miles	4,011	5,620	15,089	23,218	-29%	-35%
Hours Worked	815	806.5	3023	3411	1%	-11%

MONTHLY REPORT APRIL 2013

9 May 2013



MONTHLY REPORT APRIL 2013

9 May 2013

ANIMAL CONTROL

The Animal Control Division is responsible for educating the public on safe and humane issues regarding animal treatment, enforcing all animal laws and ordinances, assisting the

public in resolving animal issues, and protecting the safety and welfare of the citizens and animals in this community.

Incident/Service	This Month	This Month Last Year	YTD	Last YTD	Change By Month	Change YTD
Barking Complaints	21	17	43	38	24%	13%
Bite Reports	7	11	16	33	-36%	-52%
Door Hangers	61	46	204	214	33%	-5%
Welfare Checks	70	71	174	462	-1%	-62%
Advised of Rights	1083	915	3780	3350	18%	13%
Incident Reports	6	8	10	25	-25%	-60%
Gone on Arrival	60	59	181	194	2%	-7%
Complaints	801	853	2900	3166	-6%	-8%
Desk Complaints	1483	1145	5681	5370	30%	6%
Captured Dogs	128	155	538	609	-17%	-12%
Captured Cats	12	1	58	19	1100%	205%
Captured Wildlife	66	21	109	73	214%	49%
Chemical Captures	1	2	4	9	-50%	-56%
Traps	34	53	89	85	-36%	5%
Deceased Animals	90	71	228	354	27%	-36%
Assist J.P.D.	4	9	15	19	-56%	-21%
Assist C.S.O.	0	0	4	0	N/C	N/C
Public Relations	292	507	1348	1803	-42%	-25%
Incident/Service	This Month	This Month Last Year	YTD	Last YTD	Change By Month	Change YTD
CITATIONS ISSUED	43	40	141	238	8%	-41%
WARNINGS ISSUED	98	84	378	178	17%	112%
Physical Arrests	2	1	11	4	100%	175%
City Warrants Served	4	2	30	19	100%	58%
County Warrants Served	0	6	2	6	-100%	-67%
Felony Bench Warrants	0	0	1	0	N/C	N/C
Euthanized	54	46	280	252	17%	11%
Deceased Animals Landfill lbs.	6420	2550	15880	12550	152%	27%
Wildlife Euthanized	66	21	109	73	214%	49%
Sent to Rescue Centers	17	3	19	37	467%	-49%
Adoptions	43	46	151	181	-7%	-17%
Miles Driven	9,382	7364	34,327	27,466	27%	25%

FLEET MAINTNANCE

The Fleet Maintenance is responsible for all of the police vehicle maintenance upkeep, cleanliness, and purchasing. In addition, this

Division handles most of the purchasing of equipment, supplies, and uniforms for all of the Police Department.

MONTHLY REPORT APRIL 2013

9 May 2013

Repair Costs by Model Year	This Month	This Month Last Year	YTD	Last YTD	Change By Month	Change YTD
95-99	\$0.00	\$0.00	\$0.00	\$0.00	N/C	N/C
2000	\$0.00	\$0.00	\$0.00	\$0.00	N/C	N/C
2001	\$0.00	\$0.00	\$0.00	\$300.46	N/C	-100%
2002	\$0.00	\$0.00	\$0.00	\$0.00	N/C	N/C
2003	\$977.43	\$0.00	\$1,205.15	\$0.00	N/C	N/C
2004	\$0.00	\$259.75	\$37.43	\$1,402.82	-100%	-97%
2005	\$0.00	\$41.61	\$0.00	\$598.07	-100%	-100%
2006	\$12,089.21	\$4,280.74	\$14,317.04	\$10,982.79	182%	30%
2007	\$5,324.83	\$2,406.85	\$10,171.13	\$6,039.05	121%	68%
2008	\$974.38	\$1,213.25	\$2,244.87	\$1,911.41	-20%	17%
2009	\$444.69	\$0.00	\$1,367.86	\$440.38	N/C	N/C
2010	\$11.61	\$0.00	\$442.57	\$489.28	N/C	N/C
2011	\$642.16	\$131.54	\$1,108.59	\$601.23	N/C	N/C
2012	\$0.00	\$0.00	\$0.00	\$0.00	N/C	N/C
2013	\$0.00	n/a	\$0.00	n/a	N/C	N/C
Totals	\$20,464.31	\$8,333.74	\$30,894.64	\$22,765.49	146%	36%

Routine Preventative Maintenance by Model Year	This Month	This Month Last Year	YTD	Last YTD	Change By Month	Change YTD
95-99	\$174.13	\$72.00	\$174.13	\$72.00	142%	142%
2000	\$0.00	\$0.00	\$20.00	\$20.00	N/C	0%
2001	\$20.00	\$0.00	\$186.59	\$0.00	N/C	N/C
2002	\$0.00	\$0.00	\$0.00	\$100.46	N/C	-100%
2003	\$0.00	\$0.00	\$327.59	\$172.00	N/C	90%
2004	\$20.00	\$9.00	\$545.89	\$158.00	122%	246%
2005	\$833.58	\$13.50	\$1,341.32	\$405.35	6075%	231%
2006	\$2,024.15	\$1,486.52	\$6,393.65	\$7,316.13	36%	-13%
2007	\$2,265.56	\$428.50	\$5,174.90	\$4,722.00	429%	10%
2008	\$84.50	\$209.95	\$2,092.45	\$1,682.49	-60%	24%
2009	\$868.57	\$313.03	\$2,539.96	\$2,882.40	N/C	N/C
2010	\$0.00	\$366.63	\$523.89	\$1,009.78	N/C	N/C
2011	\$820.99	\$160.00	\$5,135.34	\$556.50	N/C	N/C
2012	\$0.00	\$352.81	\$353.42	\$352.81	N/C	N/C
2013	\$0.00	n/a	\$732.37	n/a	N/C	N/C
Totals	\$7,111.48	\$3,411.94	\$25,541.50	\$19,449.92	108%	31%

RECORDS

The Records Division is responsible for providing administrative and clerical support to the department. Major responsibilities include entering the accident and incident reports and tickets into the records database management system, assisting the general

public for report requests, performing criminal backgrounds, serving as a switchboard at times, performing validations, and setting up and managing the payment plans out of court.

RECORDS	This Month	This Month Last Year	YTD	Last YTD	Change By Month	Change YTD
Incident/Arrest Reports Processed	1300	1328	4799	5118	-2%	-6%
Accident Reports Processed	214	217	819	827	-1%	-1%
Citations Processed	3701	4072	13259	17140	-9%	-23%
Warnings Processed	1044	882	3609	3281	18%	10%
Backgrounds	8	8	75	56	0%	34%
Photos	0	0	3	0	N/C	N/C
Accident Requests	99	110	455	511	-10%	-11%
Accident Requests Online	142	132	532	426	8%	25%
TOTALS	6,508	6,749	23,551	27,359	-4%	-14%

MONTHLY REPORT APRIL 2013

9 May 2013

PROFESSIONAL STANDARDS

The Office of Professional Standards, a unit within Administration, is charged with the compilation and updating of an extensive set of policies and procedures and providing a general operations guideline and code of conduct for officers to follow. In the event

that a member of the public does experience a negative interaction with an officer, mechanisms are in place for them to lodge a complaint. All complaints are reviewed and investigations completed in a timely manner.

Professional Standards	This Month	This Month Last Year	YTD	Last YTD	Change By Month	Change YTD
Opened (TOTAL)	5	14	11	29	-64%	-62%
Closed	5	12	10	27	-58%	-63%
Inquiries	3	12	8	21	-75%	-62%
Formal Investigations	2	2	3	3	0%	0%
Sustained	3	10	7	23	-70%	-70%
Not-Sustained	0	0	0	0	N/C	N/C
Exonerated	2	0	2	1	N/C	100%
Unfounded	2	4	4	5	-50%	-20%

END OF REPORT



Contact Information

Basia Combs, MPA, CCIA | Crime Analyst | Office of Crime Analysis & Criminal Intelligence
Jonesboro Police Department | 410 W Washington Ave | Jonesboro, AR 72401
Ph: 870-336-7196 | E-mail: bcombs@jonesboro.org | www.jonesboropolice.com