

JONESBORO POLICE DEPARTMENT

Monthly Report

July 2013

IN THIS REPORT

CRIME ANALYSIS	1
Total Crime	2
Crimes against Person	3
Property Crimes	4
Crimes of Proactive Policing	5
Other Crimes.....	6
Arrests Demographics	7
EMERGENCY 911	9
UPD	10
_PROWL	10
CID	11
WARRANTS	12
DRUG TASK FORCE	13
TRAFFIC	14
Maps	15
ANIMAL CONTROL	16
FLEET MAINTENANCE	16
RECORDS	17
PROFESSIONAL	
STANDARDS	18

The purpose of the Jonesboro Police Department Monthly Report is to compile data into one integrated report for review, allowing for a seamless flow of information for better decision-making. After each department collates their monthly numbers and sends it to the Office of Crime Analysis, it is organized into sections of departmental data, analyzed and packaged, and finally disseminated to department heads, the Chief of Police, the City Mayor, and the City Council. Major sections include Crime Analysis, Emergency 911, Uniform Police Division, Prowl, Criminal Investigative Division, Warrants, Drug Task Force, Traffic, Parking Enforcement, Animal Control, Fleet Maintenance, Records, and Professional Standards.

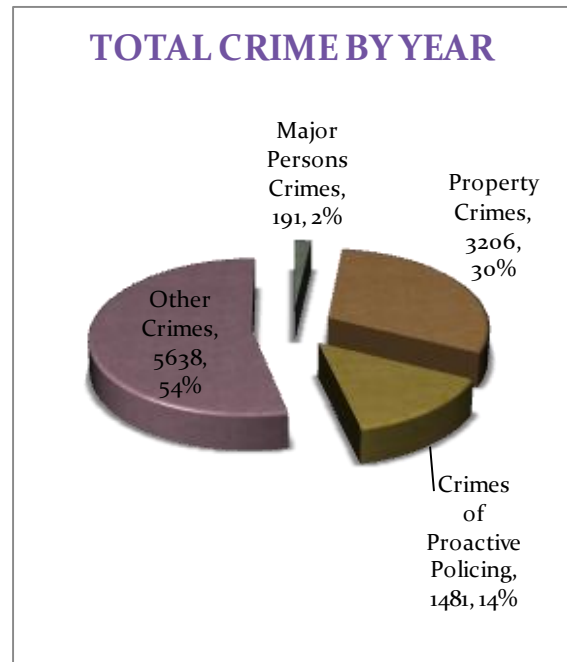
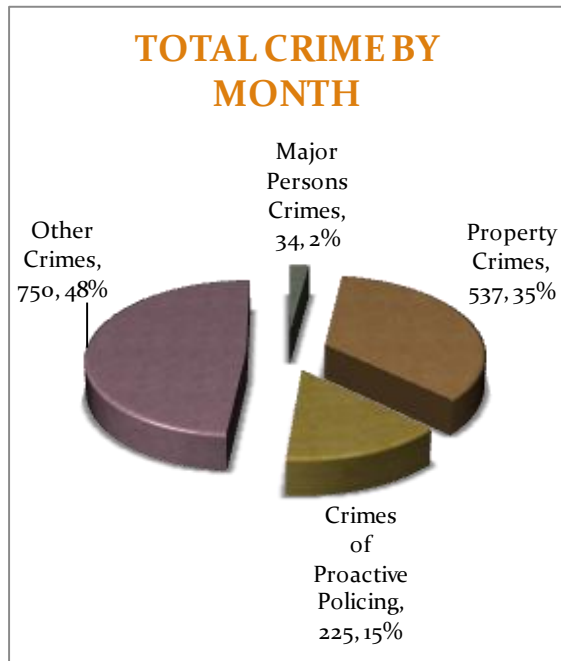
CRIME ANALYSIS

The Crime Analysis division consists of one Crime Analyst and one part-time Crime Analyst Assistant. The Crime Analyst position is responsible for the analysis and dissemination of crime activity data and the collection and maintenance of crime intelligence information for the city of Jonesboro. Additionally, the Crime Analyst is charged with providing the department with current and accurate crime maps, presenting crime activity data to audiences of interest, and with responding to requests for crime data from civilians and departmental staff. Data exported from this division is used by field agents for more effective, efficient policing, administration for improved staffing decisions, and the Mayor's office for community decision making and enhanced public relations. The following section is broken down into Total Crime, Crimes against Persons, Property Crimes, Crimes of Proactive Policing, Other Crimes, Arrest Demographics, and Total Crime Monthly Comparison.

TOTAL CRIME

The crime activity for the month of July 2013 was at a total of 1,546 NIBRIS reportable offenses, a 2% increase, comparing to the total of offenses reported in July of the last year. With Jonesboro population estimated to be equal to 69,856, the crime rate in July of this year was at 22 crimes per 1,000 population, comparing to 22 crimes per 1,000 population last year¹, no change. As indicated on a pie chart below, Other Crimes absorb the majority, 48%, of this month's crime activity (n = 750). Property Crimes fall into a second place and comprise of 35% of all the crimes (n = 537). Following in third and fourth places are, respectively, Crimes of Proactive Policing, comprising of 15% (n = 225) of all the crimes, and Crimes against Persons, comprising of 2% (n = 34) of all the crimes this month.

Year to date data includes number of crimes from January through July 2013. A total of 10,516 NIBRIS reportable offenses were reported in 2013, a 6% decrease, comparing to the same period last year. The year to date crime rate amounts to 151 offenses per 1,000 population, compared to 163 offenses per 1,000 population last year (down 2%). To date this year, 54% of all the crimes is attributed to Other Crimes category (n = 5,638). Property Crimes amount to 30% of all the crimes (n = 3,206), Crimes of Proactive Policing comprise of 14% of all the crimes to date, where n = 1,481; Crimes against Persons comprise of 2% of a total year to date number of crimes (n = 191).

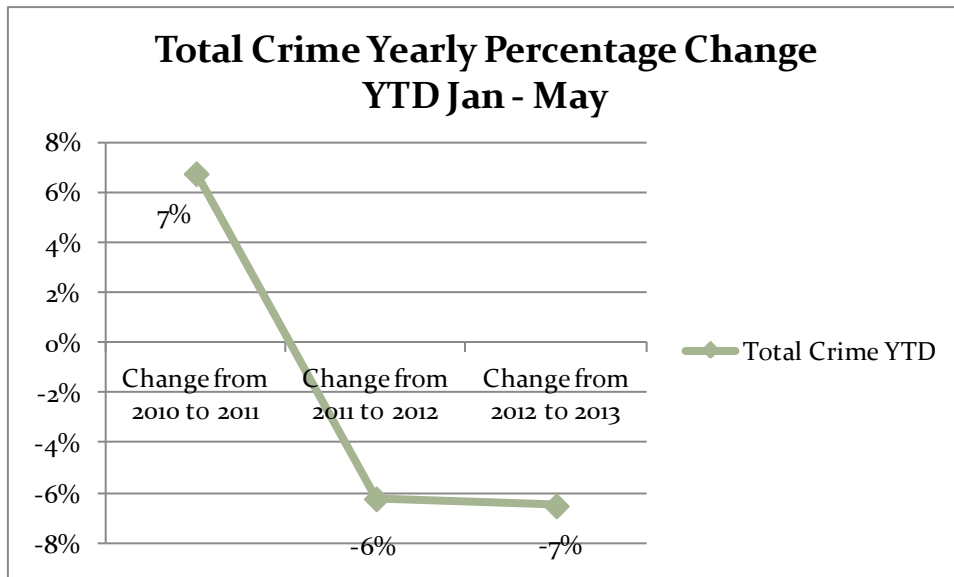
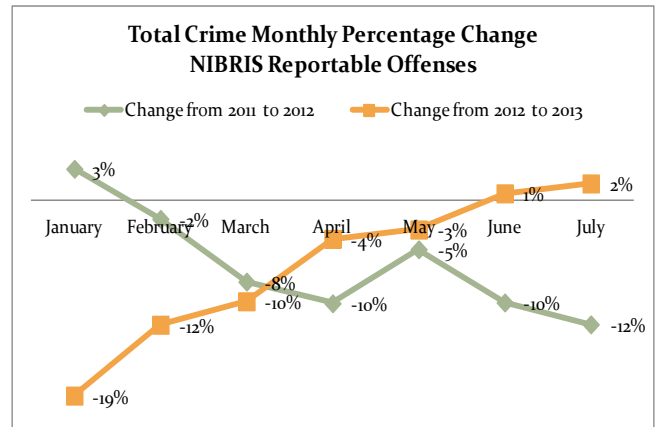
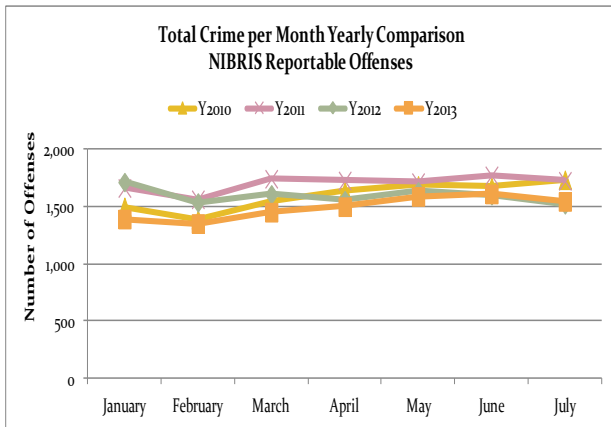


Line charts on the following page depict frequencies of crime and a monthly and yearly percentage change from the last year.

¹ Note: Population numbers are based on 2011 & 2012 population estimate, where 2011 population estimate is 68,547.

MONTHLY REPORT JULY 2013

9 August 2013



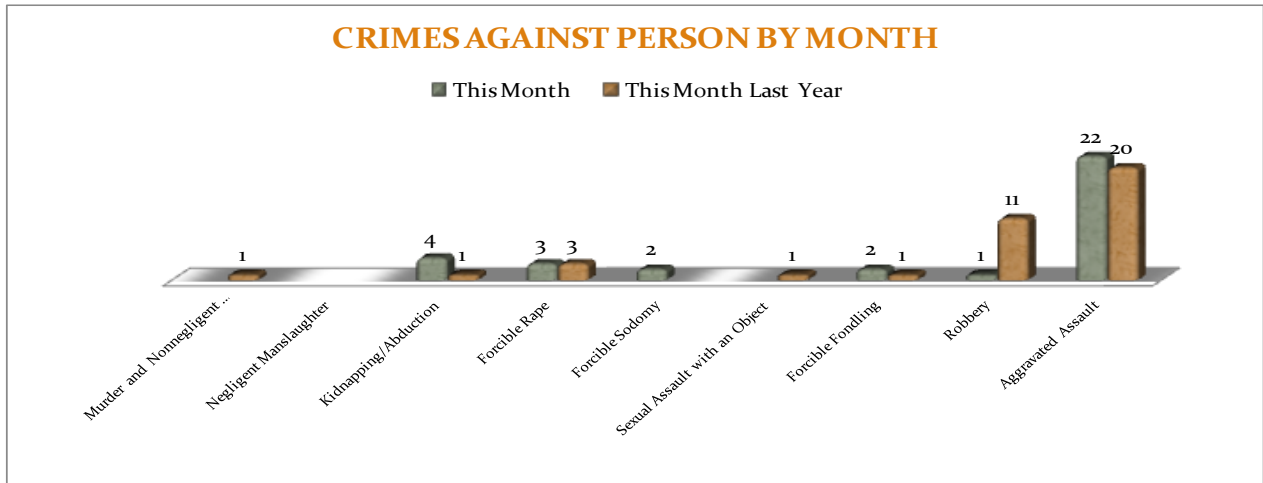
CRIMES AGAINST PERSONS

There are 9 crimes that make up this section. There were a total of 40 offenses in this area in July this year, a 33% increase comparing to July of the last year. Robbery is up by 3

offenses, but kidnapping/Abduction is down 3 offenses. As demonstrated on the bar chart below, there are no significant changes in frequencies for the crimes in this category.

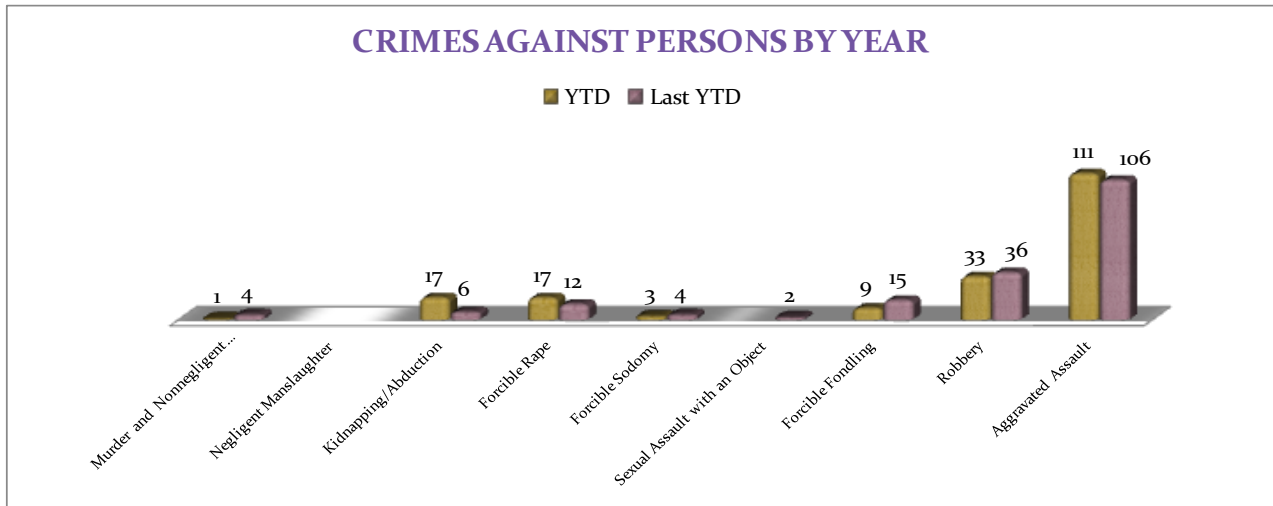
MONTHLY REPORT JULY 2013

9 August 2013



A bar graph below shows the year to date data for Crimes against Persons, which amounts to a total of 156 incidents for this category of crimes, no change, comparing to the year to date data of last year. There was

a 67% decrease in Murder and Nonnegligent Manslaughter. Kidnapping/Abduction is up 8 offenses. There are no other significant changes in frequencies for the crimes in this category.



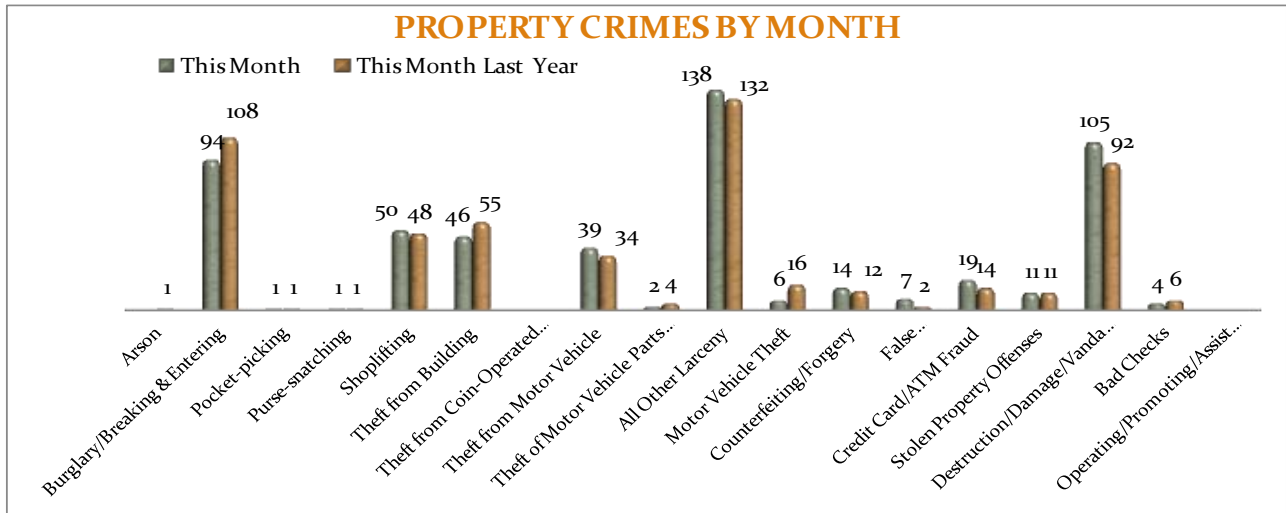
PROPERTY CRIMES

This section displays the criminal activity for 18 crimes, all against property. This month, there were a total of 525 Property Crimes, a 8% increase comparing to July of the last year. The data indicates a significant change

in Stolen Property Offenses (up 122%) and Destruction/Damage/Vandalism of Property is up 25%. No other significant changes are noted this month for this crime category.

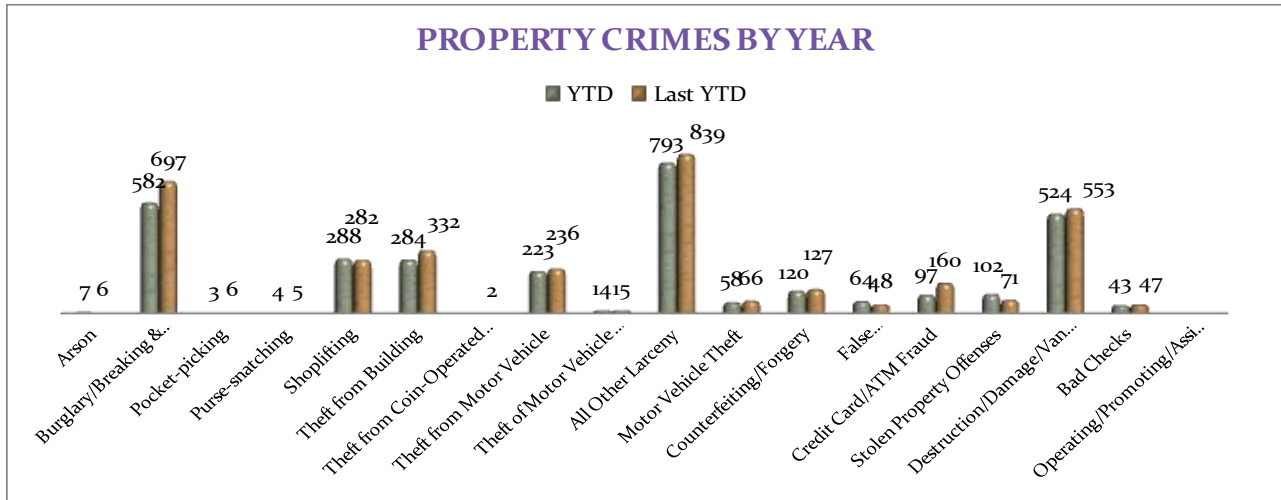
MONTHLY REPORT JULY 2013

9 August 2013



To date this year, 2647 property offenses have occurred, a 10% decrease, comparing to the last year's data at this same time. The following significant changes are noted this year: Credit Card/ATM Fraud is down, -47%;

Burglary/Breaking & Entering is down, -23%, Theft from Building is down, -17%. Stolen Property Offenses are up, 47%. There are no other statistically significant changes noted for other offenses in this category.



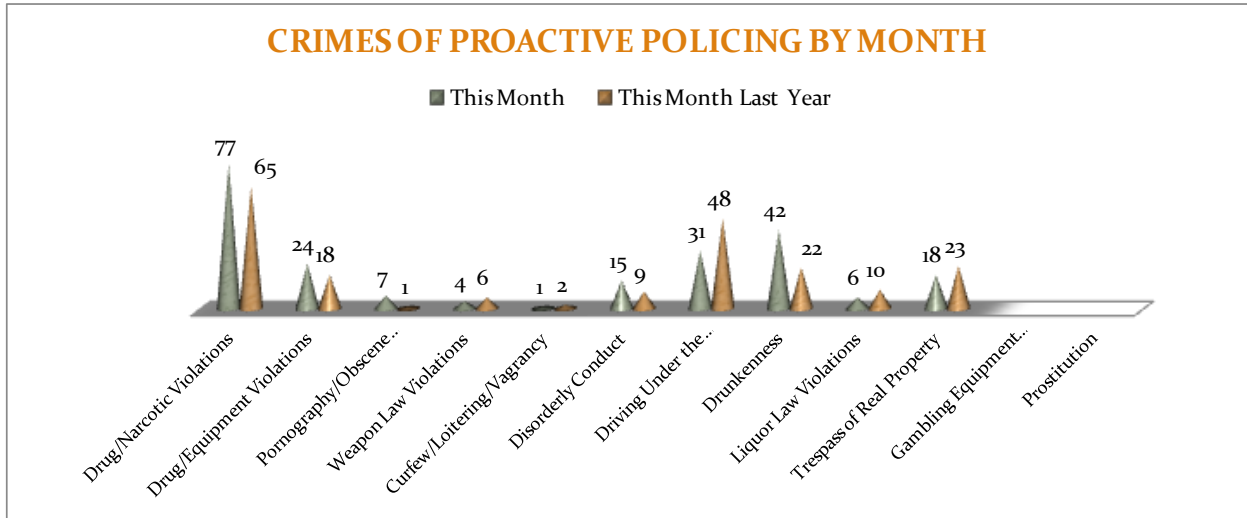
CRIMES OF PROACTIVE POLICING

Crimes of Proactive Policing are those crimes that result from police officers actively policing the streets to combat certain types of street crime. As a chart below indicates, twelve crimes fall under this category. A total of 198 offenses have been reported this month, a 18% decrease, comparing to July of

the last year. Drug/Narcotic Violations are down, -32% and Drunkenness is up +23%. Driving under the Influence is down, -34%. There are no other statistically significant changes noted for other offenses in this category.

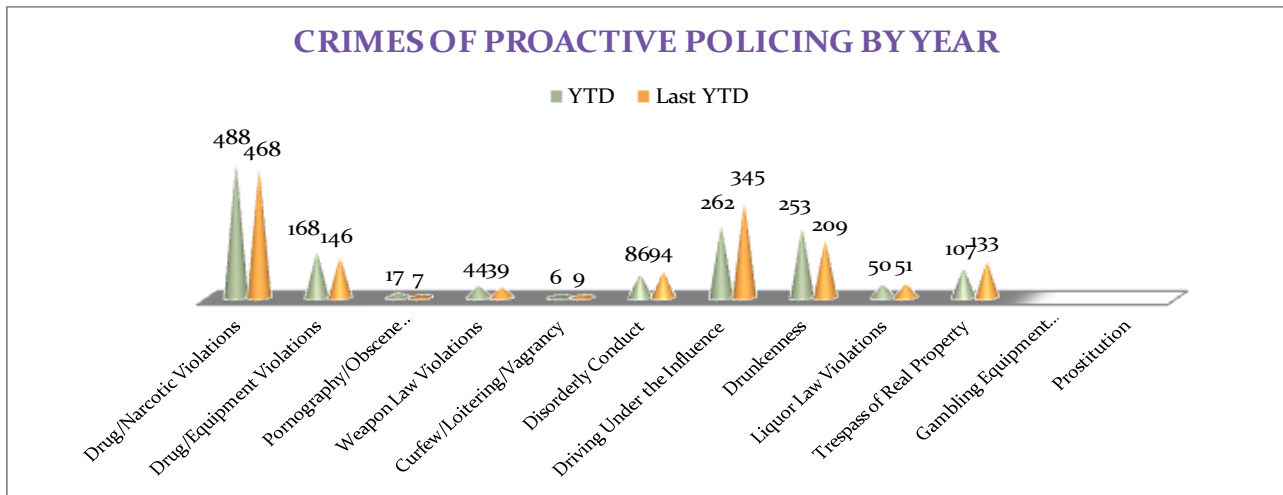
MONTHLY REPORT JULY 2013

9 August 2013



To date for the year 2013, there have been 1254 crimes of proactive policing reported, a 3% decrease when comparing to the last year's to date data. Drug / Equipment Violations are up 13%, and Drunkenness is

up 11%, while Driving Under the Influence is down 22% and Disorderly Conduct is down 16%. There are no other statistically significant changes noted for other offenses in this category.



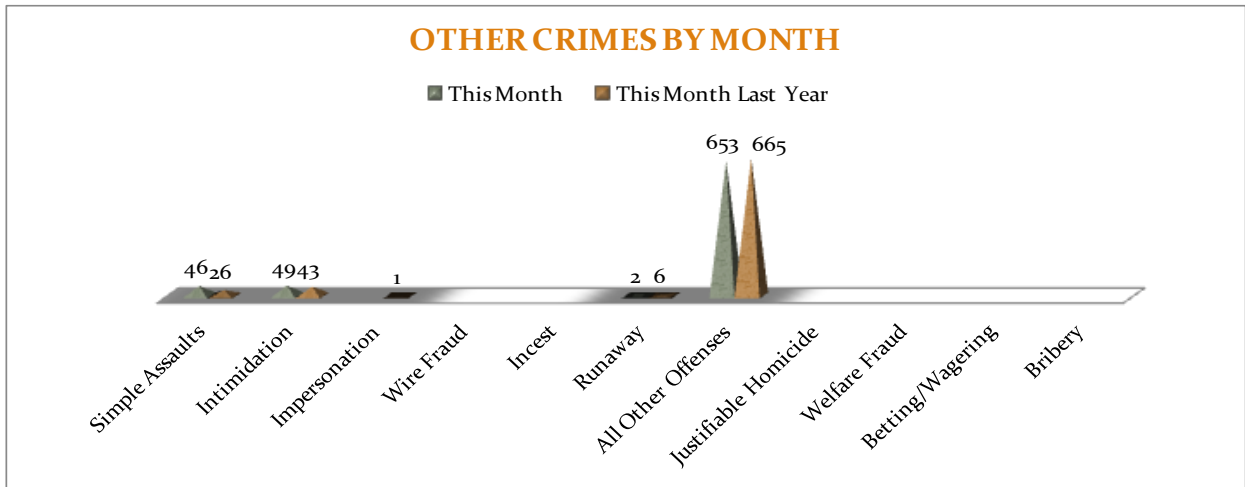
OTHER CRIMES

There are 11 crimes that fall into the Other Crimes category. This month, there have been a total of 824 Other Crimes reported, a 2% decrease, comparing to July of the last

year. Simple Assaults increased by 25%, while All Other Offences decreased by 4%. No other significant changes are noted in this category of crimes this month.

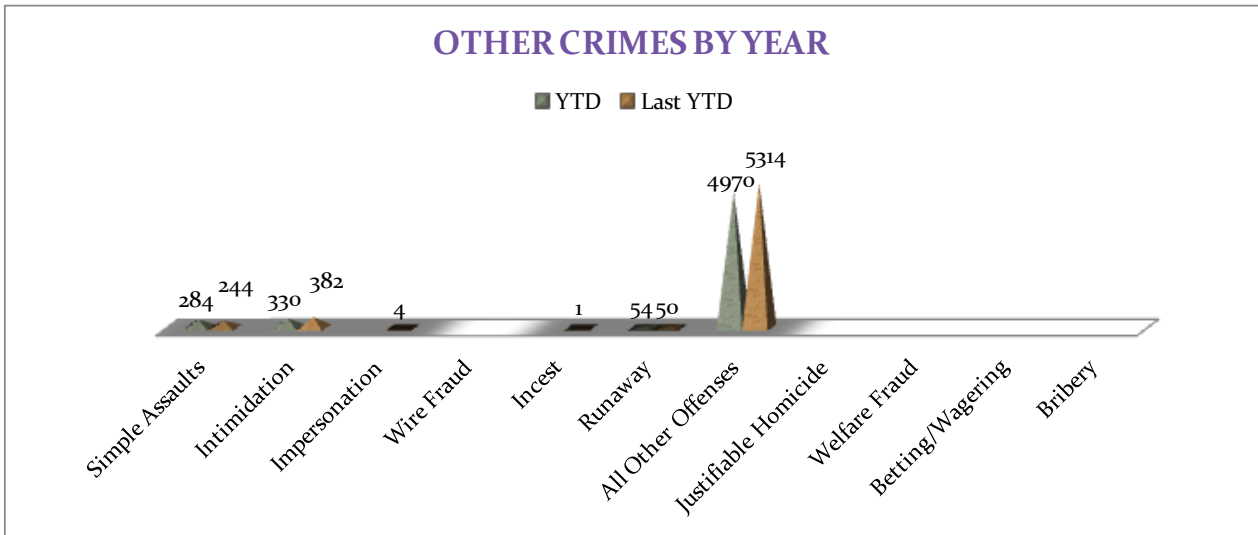
MONTHLY REPORT JULY 2013

9 August 2013



To date this year, there have been 4881 Other Crimes offenses reported, a 7% decrease comparing to the last year's to date data. Intimidation offenses are down 18%, Simple Assaults increased by 10%, and All

Other Offenses decreased by 7%. No other significant changes have been observed for other offenses within this category, comparing to the last year's data.



ARREST DEMOGRAPHICS

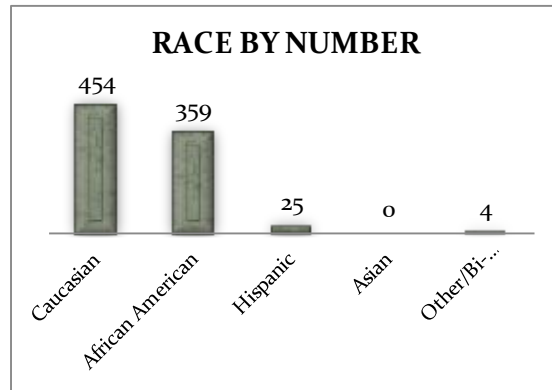
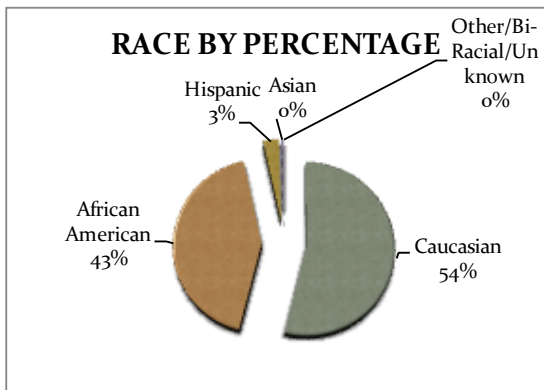
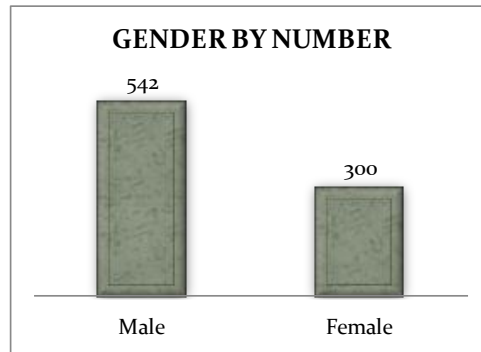
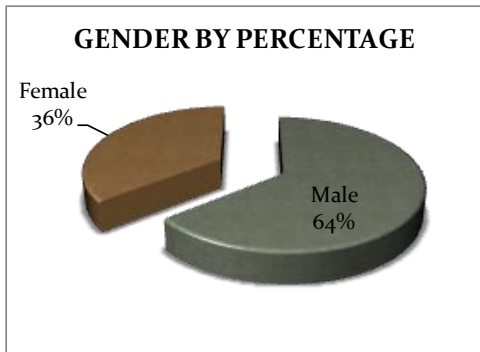
In July 2013, there were a total of 878 arrests carried out by the Jonesboro Police Department. Comparing with the last year's data for the month of July, there was a 2%

increase in arrests this month, which results in 55 arrests per 100 offenses in July of this year, comparing to 54 arrests per 100 offenses last year, a 3.1% increase for arrests per 100

9 August 2013

offenses. This section breaks down this month's arrests by race and gender. The majority of arrestees, 69%, have been male ($n = 606$), as opposed to 31% of female arrestees ($n = 270$). As for the racial/ethnic

composition, the majority of arrestees have been Caucasian (56%) and African American (40%) as opposed to Hispanic (3%), Asian (0%), or other/unknown/bi-racial (1%).

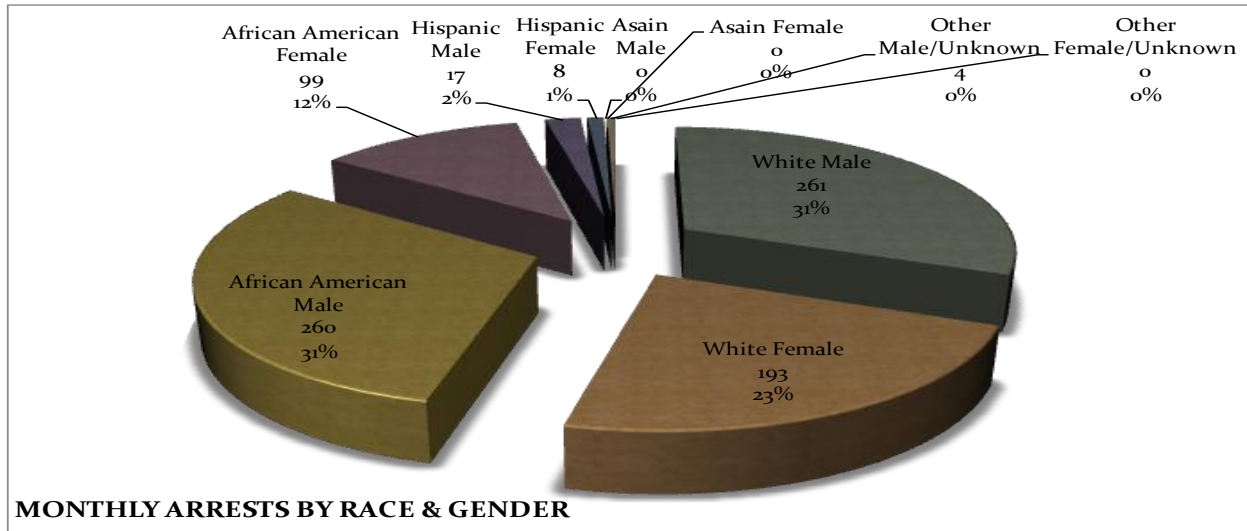


Caucasian males make up the majority, 36%, of arrestees this month ($n = 315$). African American males make up 30% of arrestees for the month of July ($n = 260$). Caucasian females make up 20% ($n = 172$) and African American females make up 11% ($n = 93$) of arrestees this month. Hispanic males make

up 3% ($n = 26$), while Hispanic Females make up 0% of arestees this month ($n = 4$). There were 0 Asain male and 5 Males of unknown race or ethnicity and 1 female of unknown race or ethnicity arested in July.

MONTHLY REPORT JULY 2013

9 August 2013



EMERGENCY 911

Also known as Public Safety Answering Point (PSAP), the Emergency 911 Division is responsible for answering all calls from public for emergency assistance, accessing the needed information to best assist, and then assigning the most efficient and effective emergency response. In addition,

this division is responsible for setting priority call dispatching to field units including Police, Fire, and EMS. Emergency 911 also maintains all records for radio logs, calls for service, and other emergency service data collections.

Calls by Type	This Month	This Month Last Year	YTD	Last YTD	Change By Month	Change YTD
Land Line Eq11	908	901	5,652	5,530	1%	2%
Cell Phone Eq11	4,683	4,794	29,839	29,001	-2%	3%
Admin Lines-non emer	14,978	16,643	101,325	120,061	-10%	-16%
TOTALS	20,569	22,338	136,816	154,592	-8%	-11%
Calls by Agency	This Month	This Month Last Year	YTD	Last YTD	Change By Month	Change YTD
Jonesboro PD Calls	7,240	6,755	46,752	48,926	7%	-4%
Craighead Cty Sheriff	1,433	1,287	9,051	8,868	11%	2%
Jonesboro Fire Dpt - dispatch	183	222	1,361	1,531	-18%	-11%
Jonesboro Fire Dpt - Med Asst	144	126	971	830	14%	17%
Craighead Cty - Fire	45	69	293	493	-35%	-41%
Craighead Cty - 1st Responder	102	113	752	761	-10%	-1%
Emerson Ambulance	312	297	1,974	2,104	5%	-6%
Medic One	319	333	2,209	1,961	-4%	13%
Air Evac	0	0	2	5	N/C	-60%
Coroner	3	8	24	26	-63%	-8%
ARK State Police	5	15	73	104	-67%	-30%
Jonesboro Animal Control	2	4	13	15	-50%	-13%
Wreckers Called	190	194	1,183	1,180	-2%	0%
TOTALS	9,978	9,423	64,658	66,804	6%	-3%

MONTHLY REPORT JULY 2013

9 August 2013

Calls by Municipality	This Month	This Month Last Year	YTD	Last YTD	Change By Month	Change YTD
Bay PD	143	154	911	809	-7%	13%
Bono PD	263	296	1978	1862	-11%	6%
Brookland PD	185	115	971	1174	61%	-17%
Caraway PD	71	84	453	1003	-15%	-55%
Cash PD	128	47	338	212	172%	59%
Egypt PD	30	4	90	53	650%	70%
Lake City PD	132	130	920	1082	2%	-15%
Monette PD	192	104	910	1030	85%	-12%
TOTALS	1,144	934	6,571	7,225	22%	-9%

UNIFORM PATROL DIVISION

The UPD is responsible for responding to calls into the Emergency - 911 Division by civilians and are normally the first responders. Jonesboro is divided into 6 patrol districts. Officers from UPD are

assigned to a district and work the same district every shift. In addition, when a Traffic Officer is not available, a UPD Officer will respond to traffic accidents and assist in directing traffic when necessary.

Incidents	This Month	This Month Last Year	YTD	Last YTD	Change By Month	Change YTD
Calls for Service	7,240	6,755	46,754	46,754	7%	0%
Complaints / Calls	4,642	4,127	29,957	28,707	12%	4%
Assists	1,020	1,094	10,095	8,568	-7%	18%
Incident Reports	998	788	7,160	6,822	27%	5%
Street Accidents	70	68	616	587	3%	5%
Private Property Accidents	28	31	337	309	-10%	9%
Traffic Stops	2,166	1,971	16,365	14,779	10%	11%
Traffic Citations	553	541	5,323	5,015	2%	6%
Written Warnings	893	718	6,959	4,872	24%	43%
DWI	27	38	295	164	-29%	80%
Mis. Arrests	483	415	3,836	3,499	16%	10%
Felony Arrests	130	76	820	661	71%	24%
Warrants Served	1,110	1,278	10,673	10,144	-13%	5%
Alarms	363	395	2,748	2,258	-8%	22%
TOTALS	19,723	18,295	141,938	133,139	8%	7%
Hours Worked	8,452	8,244	69,916	69,982	3%	0%

PROWL

The Prowl unit is a uniformed street crimes unit specializing in criminal patrol, narcotics enforcement, gang investigation, and prostitution activity. The unit conducts directed patrols, investigates citizen

complaints of street-level criminal activity, and directly assists the 2nd Judicial Drug Task Force. PROWL also assists any division within the Jonesboro Police Department at any time when needed.

MONTHLY REPORT JULY 2013

9 August 2013

Incidents	This Month	This Month Last Year	YTD	Last YTD	Change By Month	Change YTD
Street Accidents	0	0	0	0	N/C	N/C
Private Property Accidents	0	0	2	1	N/C	100%
Traffic Citations	50	31	144	243	61%	-41%
DWI	0	0	0	1	N/C	-100%
Mis. Arrests	52	187	705	1,415	-72%	-50%
Felony Arrests	35	19	188	193	84%	-3%
Drug Arrests	21	22	188	196	-5%	-4%
Public Intoxication Arrests	0	0	0	1	N/C	-100%
Calls For Service	72	139	518	681	-48%	-24%
Alarms	0	0	0	0	N/C	N/C
Parking Citations	0	0	0	0	N/C	N/C
Written Warnings	96	85	446	405	13%	10%
Assists	0	0	0	0	N/C	N/C
TOTALS	326	483	2,191	3,136	-33%	-30%
Value of Drugs Seized	\$ 6,000.00	\$ 5,650.00	\$ 81,840.00	\$ 69,835.00	6%	17%
Value of Asstes Seized	\$ 14,800.00	\$ 200.00	\$ 27,403.00	\$ 32,618.00	7300%	-16%
Patrol Miles	6,950	6,850	51,700	42,600	1%	21%

CRIMINAL INVESTIGATIVE DIVISION

The CID is responsible for conducting follow-up investigations into criminal acts reported to the Jonesboro Police Department. The primary goal is to collect and present evidence that conclusively leads

to a successful arrest. Additionally, CID is charged with clearing additional crimes, recovering stolen property, preventing additional crimes, and gathering intelligence information.

Investigations	This Month	This Month Last Year	YTD	Last YTD	Change By Month	Change YTD
Criminal Investigations Assigned	170	64	839	481	166%	74%
Criminal Investigations Closed	110	64	573	354	72%	62%
Cleared by Arrests	62	43	350	243	44%	44%
Unfounded	20	4	67	39	400%	72%
Exceptionally Cleared	17	5	92	33	240%	179%
Filed With Prosecutors Office	9	11	43	33	-18%	30%
Crimes Against Persons	This Month	This Month Last Year	YTD	Last YTD	Change By Month	Change YTD
Criminal Investigations Closed	34	24	184	119	42%	55%
Cleared by Arrests	22	17	128	86	29%	49%
Unfounded	4	2	18	10	100%	80%
Exceptionally Cleared	4	2	23	9	100%	156%
Filed With Prosecutors Office	4	3	15	14	33%	7%
Property Crimes	This Month	This Month Last Year	YTD	Last YTD	Change By Month	Change YTD
Criminal Investigations Assigned	102	36	555	326	183%	70%
Criminal Investigations Closed	67	33	317	208	103%	52%
Unfounded	14	2	39	25	600%	56%
Exceptionally Cleared	12	3	61	23	300%	165%
Filed With Prosecutors Office	4	4	16	11	0%	45%
Crimes Against Children	This Month	This Month Last Year	YTD	Last YTD	Change By Month	Change YTD
Criminal Investigations Assigned	16	2	58	14	700%	314%
Criminal Investigations Closed	7	6	51	22	17%	132%
Cleared by Arrests	3	2	21	10	50%	110%
Unfounded	2	0	11	5	N/C	120%

MONTHLY REPORT JULY 2013

9 August 2013

Filed With Prosecutors Office	1	4	12	9	-75%	33%
Miscellaneous Investigations Assigned	3	2	5	3	50%	67%
Miscellaneous Investigations Cleared	2	1	14	11	100%	27%
FINGERPRINTS	This Month	This Month Last Year	YTD	Last YTD	Change By Month	Change YTD
Rolled for the Public	170	87	-	-	n/a	n/a

WARRANTS

The Warrants Division is responsible for serving warrants, criminal summonses, and subpoenas that are issued by the District Court. On city court days, the Warrants Division provides a bailiff for court and a transport officer. In addition, this Division is responsible for transporting wanted persons arrested in other jurisdictions back to

Jonesboro. The STEP program operates within this division and is a grant-funded operation in which officers can get paid overtime to enforce the safety belt law.

***Due to technical difficulties the stats for Warrants Division are unavailable for this month.**

Arrests	This Month	This Month Last Year	YTD	Last YTD	Change By Month	Change YTD
Misdemeanor	1	1129	4828	7256	-100%	-33%
Felony	2	0	2	2	N/C	0%
Total Arrests	3	1129	4830	7258	-100%	-33%
Warrants by Activity	This Month	This Month Last Year	YTD	Last YTD	Change By Month	Change YTD
Subpoenas	679	492	3743	2525	38%	48%
Commitments	4	0	23	17	N/C	35%
Traffic Citations	1	1	9	15	0%	-40%
Complaints	2	0	12	7	N/C	71%
Assist	0	0	2	1	N/C	100%
Alarms	0	0	0	0	N/C	N/C
Hours by Activity	This Month	This Month Last Year	YTD	Last YTD	Change By Month	Change YTD
SI Criminal	141	216	1231.15	1417.5	-35%	-13%
Court	138	126.5	724.17	825	9%	-12%
Prisoner Transport	54.5	22.5	205.67	207	142%	-1%
Hours Worked	This Month	This Month Last Year	YTD	Last YTD	Change By Month	Change YTD
Regular Hours Worked	553	585	3641.5	5829	-5%	-38%
Overtime Hours Worked	4	8	19.8	46	-50%	-57%
TOTAL Hours Worked	557	593	3661.3	5875	-6%	-38%
Mileage	This Month	This Month Last Year	YTD	Last YTD	Change By Month	Change YTD
Total Mileage	3593	2909	19397	18298	24%	6%

MONTHLY REPORT JULY 2013

9 August 2013

STEP	This Month	This Month Last Year	YTD	Last YTD	Change By Month	Change YTD
DWI Arrest		0	0	7	N/C	-100%
DUI Arrest		0	0	0	N/C	N/C
Traffic Citations		90	125	1583	-100%	-92%
Felony Arrests		1	1	6	-100%	-83%
Drug Arrests		0	0	1	N/C	-100%
STEP TOTALS	0	91	126	1597	-100%	-92%
STEP Hours Worked		75.5	135	1035.5	-100%	-87%
STEP Miles Driven		478	776	5244.4	-100%	-85%

DRUG TASK FORCE

The DTF is responsible for investigating major drug traffickers in the area, including all types of illegal drugs.

The DTF works closely with local, state, and federal agencies to eradicate drugs from the community.

INVESTIGATIONS	This Month	This Month Last Year	YTD	Last YTD	Change By Month	Change YTD
Opened	33	17	152	172	94%	-12%
Closed	20	15	110	137	33%	-20%
TOTAL	53	32	262	309	66%	-15%
With Nexus to Jonesboro	This Month	This Month Last Year	YTD	Last YTD	Change By Month	Change YTD
Opened	13	15	127	163	-13%	-22%
Closed	0	0	0	0	N/C	N/C
TOTAL	13	15	127	163	-13%	-22%
Outside Jonesboro (No Known Nexus)	This Month	This Month Last Year	YTD	Last YTD	Change By Month	Change YTD
Opened	1	1	3	8	1300%	-63%
Closed	0	0	0	0	0%	N/C
TOTAL	1	1	3	8	0%	-63%
ASSISTANCE RENDERED	This Month	This Month Last Year	YTD	Last YTD	Change By Month	Change YTD
Assist to Outside Agencies	0	16	0	56	-100%	-100%
Assist to Jonesboro UPD/CID	0	11	51	90	-100%	-43%
ARRESTS	This Month	This Month Last Year	YTD	Last YTD	Change By Month	Change YTD
Miscellaneous	13	3	44	49	333%	-10%
Felony	36	16	185	177	125%	5%
Marijuana	8	2	41	25	300%	64%
Cocaine	0	1	7	13	-100%	-46%
Crack Cocaine	3	1	7	19	200%	-63%
Methamphetamine/ICE	18	6	71	54	200%	31%
LSD	0	0	0	0	N/C	N/C
Extasy (MDMA or Other Designer Drug)	1	0	3	0	N/C	N/C
Prescription	7	3	25	12	133%	108%
Opiates (Heroin, Opium)	0	1	0	1	-100%	-100%
Labs	1	1	2	5	0%	-60%
All Other Drug Offenses	11	2	59	23	450%	157%
ASSET FORFEITURE	This Month	This Month Last Year	YTD	Last YTD	Change By Month	Change YTD
Vehicles Seized (No.)	0	0	2	1	N/C	100%
Value of Assets Seized(Includes Value of vehicles)	\$ -	\$ 16,326.00	\$ 6,700.00	\$ 23,726.00	-100%	-72%
Asset Value Awarded to Jonesboro PD (State)	\$ -	\$ -	\$ -	\$ -	N/C	N/C
Asset Value Awarded to Jonesboro PD (Federal)	\$ -	\$ -	\$ -	\$ -	N/C	N/C
Asset Value Awarded to Jonesboro PD (Total)	\$ -	\$ -	\$ -	\$ -	N/C	N/C

MONTHLY REPORT JULY 2013

9 August 2013

ARRESTS DEMOGRAPHICS	This Month	This Month Last Year	YTD	Last YTD	Change By Month	Change YTD
White	19	12	107	78	58%	37%
African American	7	3	35	52	133%	-33%
Latino	0	3	4	16	-100%	-75%
Asian	0	0	0	0	N/C	N/C
Other/Bi-Racial	0	0	0	0	N/C	N/C
Male	17	13	98	103	31%	-5%
Female	9	5	39	43	80%	-9%
White Male	10	9	64	46	11%	39%
White Female	9	3	33	29	200%	14%
African American Male	7	2	30	41	250%	-27%
African American Female	0	1	5	10	-100%	-50%
Latino Male	0	2	3	13	-100%	-77%
Latino Female	0	1	0	1	-100%	-100%
Asian Male	0	0	0	0	N/C	N/C
Asian Female	0	0	0	0	N/C	N/C
Other/Bi-Racial Male	0	0	0	0	N/C	N/C
Other/Bi-Racial Female	0	0	0	0	N/C	N/C

TRAFFIC

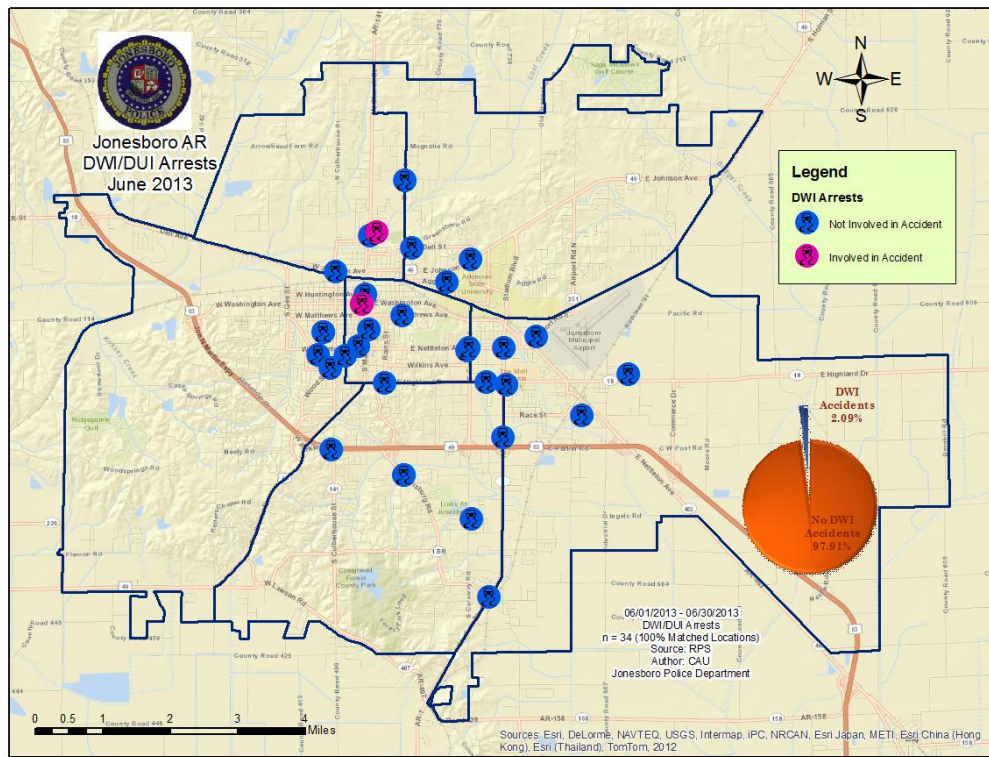
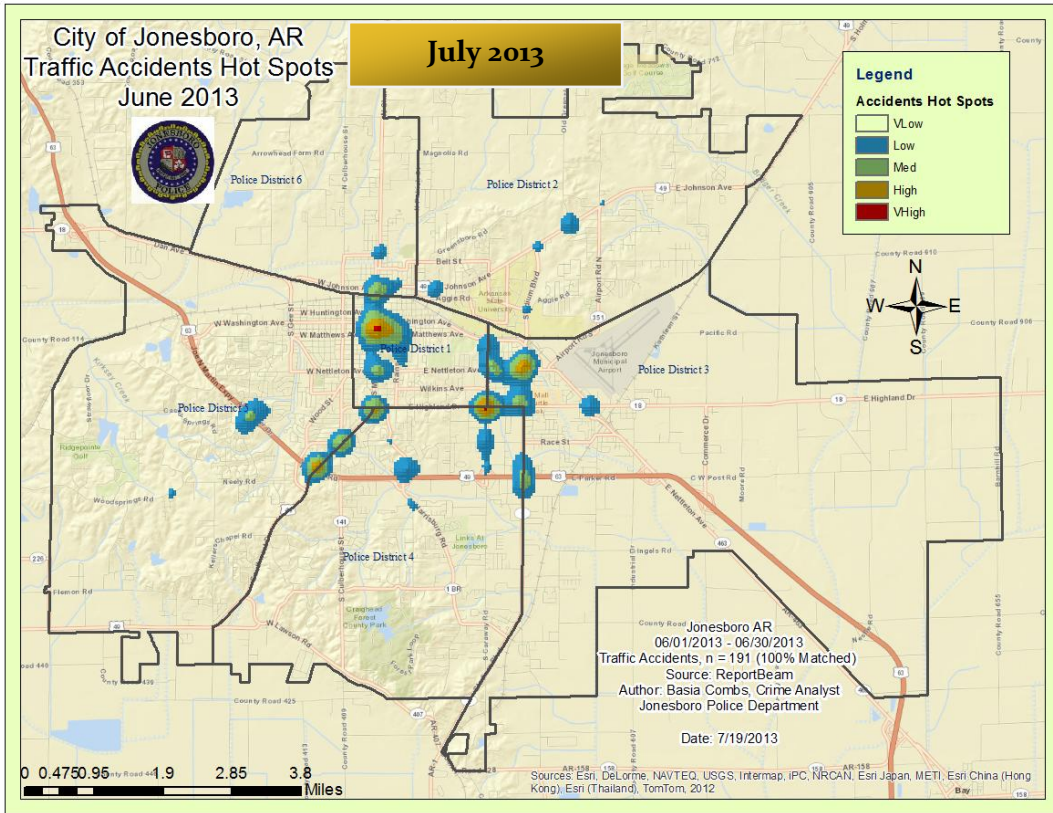
Comprised of three motor units and three Chargers, the Traffic Enforcement Unit responds to traffic accidents and provides increased enforcement in particularly challenging areas. This unit also provides

extra coverage for specific congestion problems and special events in the community. Last, they work details targeting specific issues, such as DWI enforcement and traffic safety checkpoints.

Incidents	This Month	This Month Last Year	YTD	Last YTD	Change By Month	Change YTD
Street Accidents	130	138	920	872	-6%	6%
Private Property Accidents	42	42	285	287	0%	-1%
Traffic Citations	115	131	642	1258	-12%	-49%
DWI	1	1	8	24	0%	-67%
Mis. Arrests	14	3	50	134	367%	-63%
Felony Arrests	0	0	4	13	N/C	-69%
Drug Arrests	0	0	0	0	N/C	N/C
Public Intoxication Arrests	0	0	0	1	N/C	-100%
Calls For Service	241	234	1561	1890	3%	-17%
Alarms	0	0	0	11	N/C	-100%
Parking Citations	0	0	0	0	N/C	N/C
Written Warnings	142	109	992	574	30%	73%
TOTALS	685	658	4462	5064	4%	-12%
Value of Asstes Seized	\$ -	\$ -	\$ -	\$ -	N/C	N/C
Patrol Miles	4,726	4,288	30,241	33,050	10%	-8%
Hours Worked	836	851	5496	5279	-2%	4%

MONTHLY REPORT JULY 2013

9 August 2013



MONTHLY REPORT JULY 2013

9 August 2013

ANIMAL CONTROL

The Animal Control Division is responsible for educating the public on safe and humane issues regarding animal treatment, enforcing all animal laws and ordinances, assisting the

public in resolving animal issues, and protecting the safety and welfare of the citizens and animals in this community.

Incident/Service	This Month	This Month Last Year	YTD	Last YTD	Change By Month	Change YTD
Barking Complaints	2	3	59	57	-33%	4%
Bite Reports	7	8	37	57	-13%	-35%
Door Hangers	45	30	362	298	50%	21%
Welfare Checks	76	74	373	630	3%	-41%
Advised of Rights	972	630	6834	5677	54%	20%
Incident Reports	2	2	14	43	0%	-67%
Gone on Arrival	44	64	354	398	-31%	-11%
Complaints	654	767	4966	5202	-15%	-5%
Desk Complaints	1595	1919	10589	10200	-17%	4%
Captured Dogs	126	140	1035	1003	-10%	3%
Captured Cats	17	28	118	68	-39%	74%
Captured Wildlife	95	75	321	240	27%	34%
Chemical Captures	0	2	4	20	-100%	-80%
Traps	69	55	300	271	25%	11%
Deceased Animals	20	86	318	593	-77%	-46%
Assist J.P.D.	9	15	35	43	-40%	-19%
Assist C.S.O.	2	2	6	3	0%	100%
Public Relations	906	1310	2843	4204	-31%	-32%
Incident/Service	This Month	This Month Last Year	YTD	Last YTD	Change By Month	Change YTD
CITATIONS ISSUED	69	33	307	359	109%	-14%
WARNINGS ISSUED	This Month	This Month Last Year	YTD	Last YTD	Change By Month	Change YTD
Physical Arrests	149	24	744	249	521%	199%
City Warrants Served	7	2	26	10	250%	160%
County Warrants Served	7	12	45	37	-42%	22%
Felony Bench Warrants	0	0	3	14	N/C	-79%
Euthanized	0	1	2	2	-100%	0%
Euthanized	72	93	672	512	-23%	31%
Deceased Animals Landfill lbs.	1100	2640	25480	24076	-58%	6%
Wildlife Euthanized	95	75	321	230	27%	40%
Sent to Rescue Centers	2	1	29	51	100%	-43%
Adoptions	36	45	259	326	-20%	-21%
Miles Driven	9,165	7958	63,166	49,539	15%	28%

FLEET MAINTNANCE

The Fleet Maintenance is responsible for all of the police vehicle maintenance upkeep, cleanliness, and purchasing. In addition, this

Division handles most of the purchasing of equipment, supplies, and uniforms for all of the Police Department.

MONTHLY REPORT JULY 2013

9 August 2013

Repair Costs by Model Year	This Month	This Month Last Year	YTD	Last YTD	Change By Month	Change YTD
95-99	\$ -	\$ -	\$ -	\$ -	N/C	N/C
2000	\$ -	\$ -	\$ -	\$ -	N/C	N/C
2001	\$ -	\$ -	\$ -	\$ 300.46	N/C	-100%
2002	\$ -	\$ -	\$ -	\$ -	N/C	N/C
2003	\$ 586.80	\$ -	\$ 1,791.95	\$ -	N/C	N/C
2004	\$ -	\$ -	\$ 1,968.79	\$ 1,414.43	N/C	39%
2005	\$ 257.01	\$ -	\$ 257.01	\$ 712.04	N/C	-64%
2006	\$ 2,902.75	\$ 1,566.55	\$ 24,286.84	\$ 25,877.40	85%	-6%
2007	\$ 5,793.07	\$ 1,505.16	\$ 20,531.69	\$ 8,188.94	285%	151%
2008	\$ 2,136.35	\$ -	\$ 4,932.39	\$ 2,116.72	N/C	133%
2009	\$ 551.06	\$ 11.61	\$ 2,442.29	\$ 1,640.33	N/C	N/C
2010	\$ -	\$ 11.61	\$ 442.57	\$ 500.89	N/C	N/C
2011	\$ 230.57	\$ 156.09	\$ 1,762.75	\$ 952.88	N/C	N/C
2012	\$ -	\$ -	\$ -	\$ -	N/C	N/C
2013	\$ 11.66	n/a	\$ 53.80	n/a	N/C	N/C
Totals	\$ 12,469.27	\$ 3,251.02	\$ 58,470.08	\$ 41,704.09	284%	40%

Routine Preventative Maintenance by Model Year	This Month	This Month Last Year	YTD	Last YTD	Change By Month	Change YTD
95-99	\$ -	\$ -	\$ 174.13	\$ 72.00	N/C	142%
2000	\$ -	\$ -	\$ 20.00	\$ 20.00	N/C	0%
2001	\$ -	\$ -	\$ 186.59	\$ -	N/C	N/C
2002	\$ -	\$ -	\$ 20.00	\$ 100.46	N/C	-80%
2003	\$ -	\$ -	\$ 347.59	\$ 172.00	N/C	102%
2004	\$ 87.55	\$ 77.45	\$ 657.94	\$ 295.45	13%	123%
2005	\$ 20.00	\$ 122.00	\$ 1,430.32	\$ 649.35	-84%	120%
2006	\$ 967.34	\$ 983.49	\$ 9,436.10	\$ 10,627.10	-2%	-11%
2007	\$ 545.85	\$ 338.41	\$ 7,876.28	\$ 6,802.78	61%	16%
2008	\$ 190.00	\$ 267.25	\$ 3,807.47	\$ 2,387.06	-29%	60%
2009	\$ 171.00	\$ 111.00	\$ 3,611.45	\$ 5,579.42	N/C	N/C
2010	\$ 249.26	\$ 228.53	\$ 1,140.17	\$ 1,892.99	N/C	N/C
2011	\$ 533.00	\$ 226.50	\$ 7,341.19	\$ 1,213.50	N/C	N/C
2012	\$ 20.00	\$ 20.00	\$ 428.42	\$ 372.81	N/C	N/C
2013	\$ 142.00	n/a	\$ 1,081.93		N/C	N/C
Totals	\$ 2,926.00	\$ 2,374.63	\$ 37,559.58	\$ 30,184.92	23%	24%

RECORDS

The Records Division is responsible for providing administrative and clerical support to the department. Major responsibilities include entering the accident and incident reports and tickets into the records database management system, assisting the general

public for report requests, performing criminal backgrounds, serving as a switchboard at times, performing validations, and setting up and managing the payment plans out of court.

RECORDS	This Month	This Month Last Year	YTD	Last YTD	Change By Month	Change YTD
Incident/Arrest Reports Processed	1303	1189	8707	8833	10%	-1%
Accident Reports Processed	198	202	1437	1404	-2%	2%
Citations Processed	3232	3908	23258	29764	-17%	-22%
Warnings Processed	879	846	6042	6106	4%	-1%
Backgrounds	9	24	118	101	-63%	17%
Fingerprints	0	87	639	801	-100%	-20%
Photos	0	1	3	4	-100%	-25%
Accident Requests	96	141	746	857	-32%	-13%
Accident Requests Online	139	104	910	747	34%	22%

MONTHLY REPORT JULY 2013

9 August 2013

PROFESSIONAL STANDARDS

The Office of Professional Standards, a unit within Administration, is charged with the compilation and updating of an extensive set of policies and procedures and providing a general operations guideline and code of conduct for officers to follow. In the event

that a member of the public does experience a negative interaction with an officer, mechanisms are in place for them to lodge a complaint. All complaints are reviewed and investigations completed in a timely manner.

Professional Standards	This Month	This Month Last Year	YTD	Last YTD	Change By Month	Change YTD
Opened (TOTAL)	3	4	19	46	-25%	-59%
Closed	3	4	18	44	-25%	-59%
Inquiries	1	1	13	34	0%	-62%
Formal Investigations	2	3	7	7	-33%	0%
Sustained	2	2	12	34	0%	-65%
Not-Sustained	1	0	2	1	N/C	100%
Exonerated	1	2	4	3	-50%	33%
Unfounded	0	2	5	8	-100%	-38%

END OF REPORT



Contact Information

Basia Combs, MPA, CCIA | Crime Analyst | Office of Crime Analysis & Criminal Intelligence
Jonesboro Police Department | 410 W Washington Ave | Jonesboro, AR 72401
Ph: 870-336-7196 | E-mail: bcombs@jonesboro.org | www.jonesboropolice.com