

JONESBORO POLICE DEPARTMENT

Monthly Report

March 2013

IN THIS REPORT

CRIME ANALYSIS	1
Total Crime	2
Crimes against Person	3
Property Crimes	4
Crimes of Proactive Policing	5
Other Crimes.....	6
Arrests Demographics	7
EMERGENCY 911	9
UPD	9
_PROWL	10
CID	10
WARRANTS	11
DRUG TASK FORCE	12
TRAFFIC	13
Maps	14
ANIMAL CONTROL	15
FLEET MAINTENANCE 15	
RECORDS	16
PROFESSIONAL	
STANDARDS	16

The purpose of the Jonesboro Police Department Monthly Report is to compile data into one integrated report for review, allowing for a seamless flow of information for better decision-making. After each department collates their monthly numbers and sends it to the Office of Crime Analysis, it is organized into sections of departmental data, analyzed and packaged, and finally disseminated to department heads, the Chief of Police, the City Mayor, and the City Council. Major sections include Crime Analysis, Emergency 911, Uniform Police Division, Prowl, Criminal Investigative Division, Warrants, Drug Task Force, Traffic, Parking Enforcement, Animal Control, Fleet Maintenance, Records, and Professional Standards.

CRIME ANALYSIS

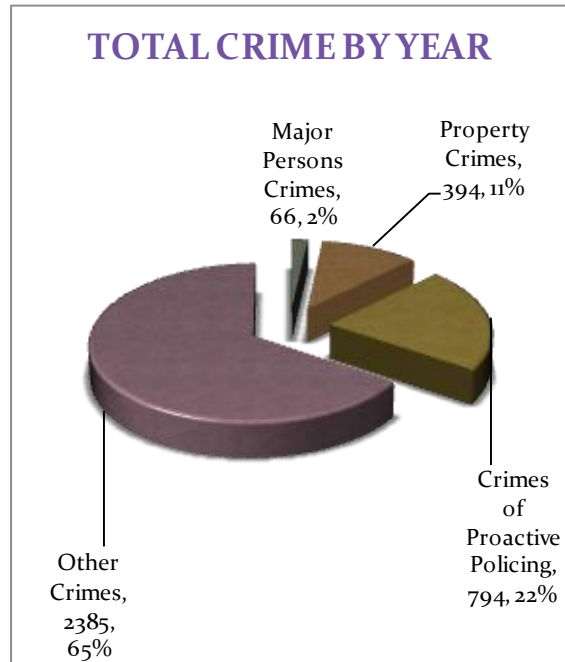
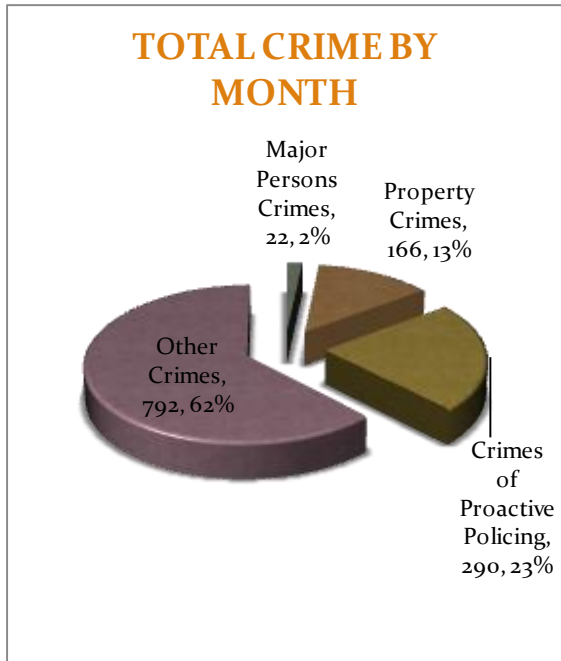
The Crime Analysis division consists of one Crime Analyst and one part-time Crime Analyst Assistant. The Crime Analyst position is responsible for the analysis and dissemination of crime activity data and the collection and maintenance of crime intelligence information for the city of Jonesboro. Additionally, the Crime Analyst is charged with providing the department with current and accurate crime maps, presenting crime activity data to audiences of interest, and with responding to requests for crime data from civilians and departmental staff. Data exported from this division is used by field agents for more effective, efficient policing, administration for improved staffing decisions, and the Mayor's office for community decision making and enhanced public relations. The following section is broken down into Total Crime, Crimes against Persons, Property Crimes, Crimes of Proactive Policing, Other Crimes, Arrest Demographics, and Total Crime Monthly Comparison.

April 10, 2013

TOTAL CRIME

The crime activity for the month of March 2013 was at a total of 1,270 NIBRIS reportable offenses, a 1% decrease, comparing to the total of offenses reported in March of the last year. With Jonesboro population estimated to be equal to 69,856, the crime rate in March of this year was at 18 crimes per 1,000 population, comparing to 19 crimes per 1,000 population last year¹, a 3% decrease. As indicated on a pie chart below, Other Crimes absorb the majority, 62%, of this month's crime activity (n = 792). Crimes of Proactive Policing fall into a second place and comprise of 23% of all the crimes (n = 290). Following in third and fourth places are, respectively, Property Crimes comprising of 13% (n = 166) of all the crimes, and Crimes against Persons, comprising of 2% (n = 22) of all the crimes this month.

Year to date data includes number of crimes from January through March 2013. A total of 3,639 NIBRIS reportable offenses were reported in 2013, an 8% decrease, comparing to the same period last year. The year to date crime rate amounts to 52 offenses per 1,000 population, compared to 57 offenses per 1,000 population last year (down 9%). To date this year, 65% of all the crimes is attributed to Other Crimes category (n = 2,385). Crimes of Proactive Policing amount to 22% of all the crimes (n = 794), Property Crimes comprise of 11% of all the crimes to date, where n = 394; Crimes against Persons comprise of 2% of a total year to date number of crimes (n = 66).

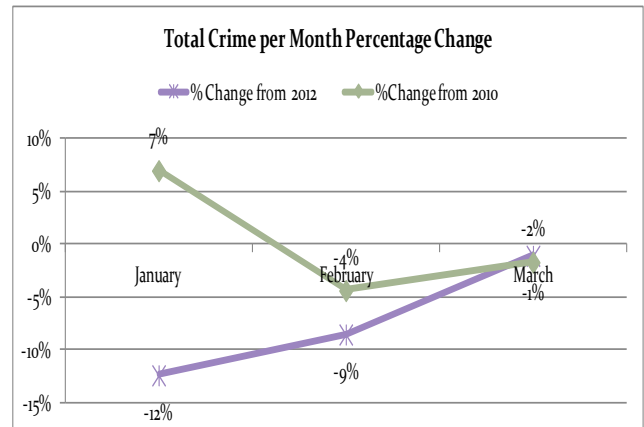
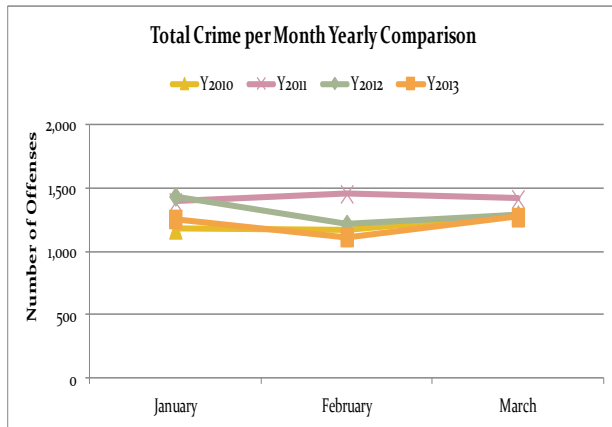


Line charts on the following page depict frequencies of crime and a yearly percentage change from the last year.

¹ Note: Population numbers are based on 2011 & 2012 population estimate, where 2011 population estimate is 68,547.

MONTHLY REPORT MARCH 2013

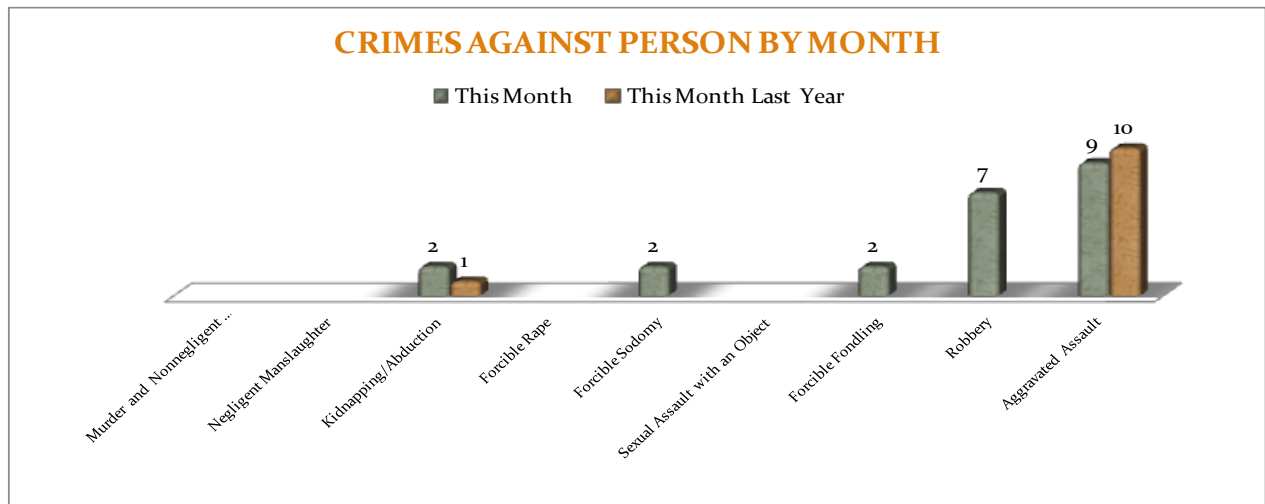
10 April 2013



CRIMES AGAINST PERSONS

There are 9 crimes that make up this section. There were a total of 22 offenses in this area in March this year, 11 more offenses when comparing to the last year's total in March. This increase is largely due to 7 more incidents of Robberies reported in March

this year, resulting in a 700% increase and affecting the overall percentage change for the Major Persons Crimes. As demonstrated on the bar chart below, there are no significant changes in frequencies for the crimes in this category.

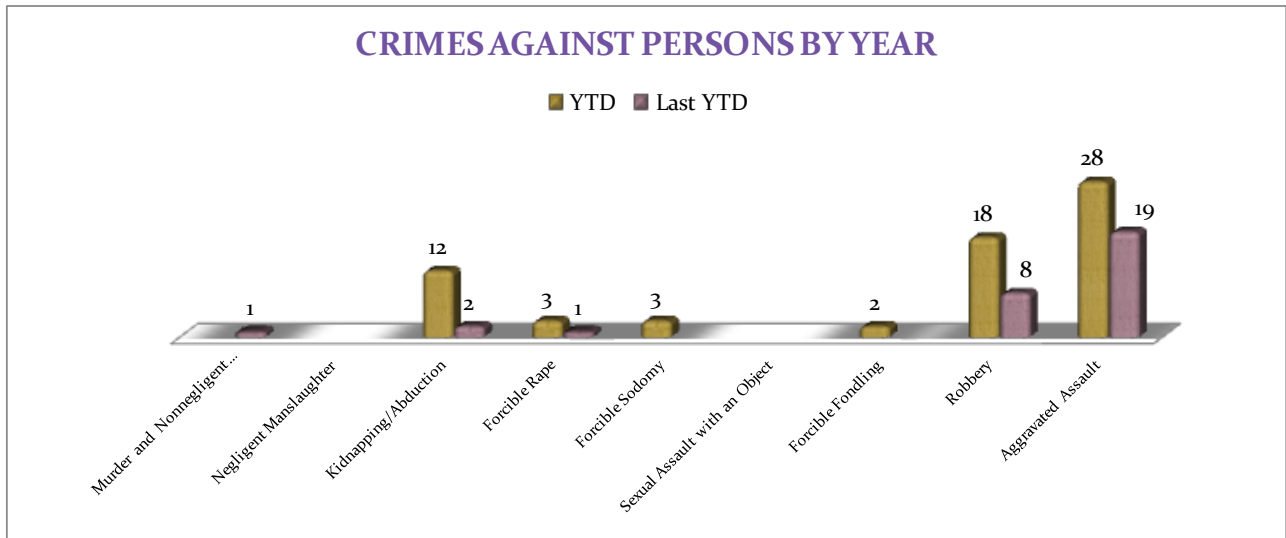


A bar graph on the following page shows the year to date data for Crimes against Persons, which amounts to a total of 66 incidents for this category of crimes, a 113% increase, comparing to the year to date data of last year. Again, this increase is largely due to three more incidents reported for Forcible

Sodomy, two more incidents of Forcible Fondling, and to 2 more incidents of Forcible Rape; moreover, there were ten more Robberies and ten more Kidnappings/ Abductions to date this year, resulting in escalation of the overall percentage change. Aggravated Assaults are up 47%.

MONTHLY REPORT MARCH 2013

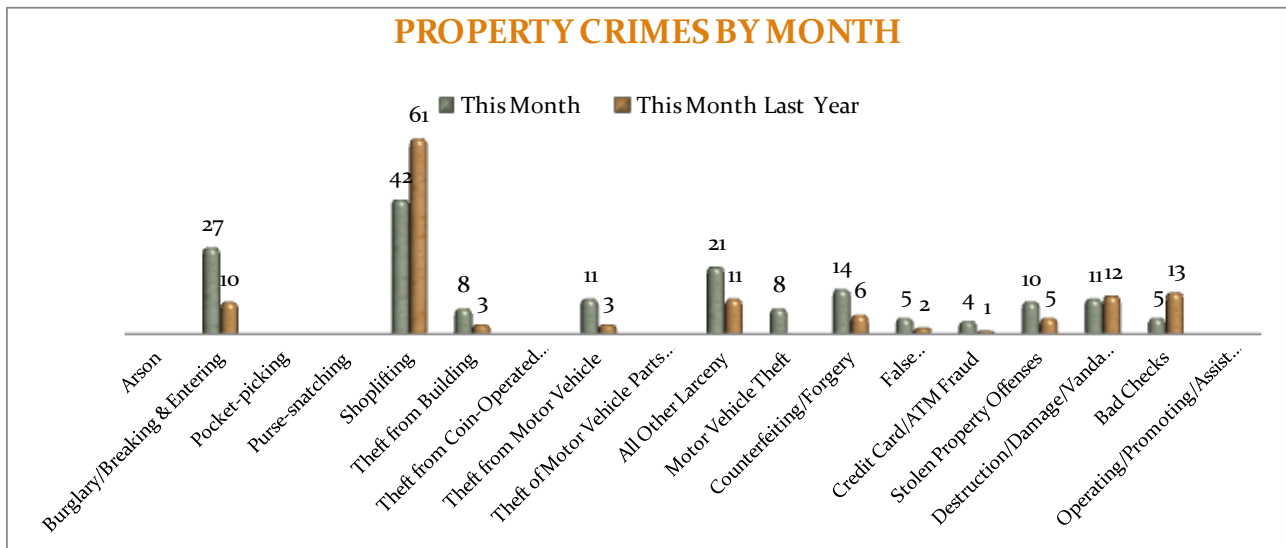
10 April 2013



PROPERTY CRIMES

This section displays the criminal activity for 18 crimes, all against property. This month, there were a total of 166 Property Crimes, a 31% increase comparing to March of the last year. The data indicates a significant change

in Shoplifting (down 31%). There were 17 more offenses reported for Burglary/Breaking & Entering. No other significant changes are noted this month for this crime category.

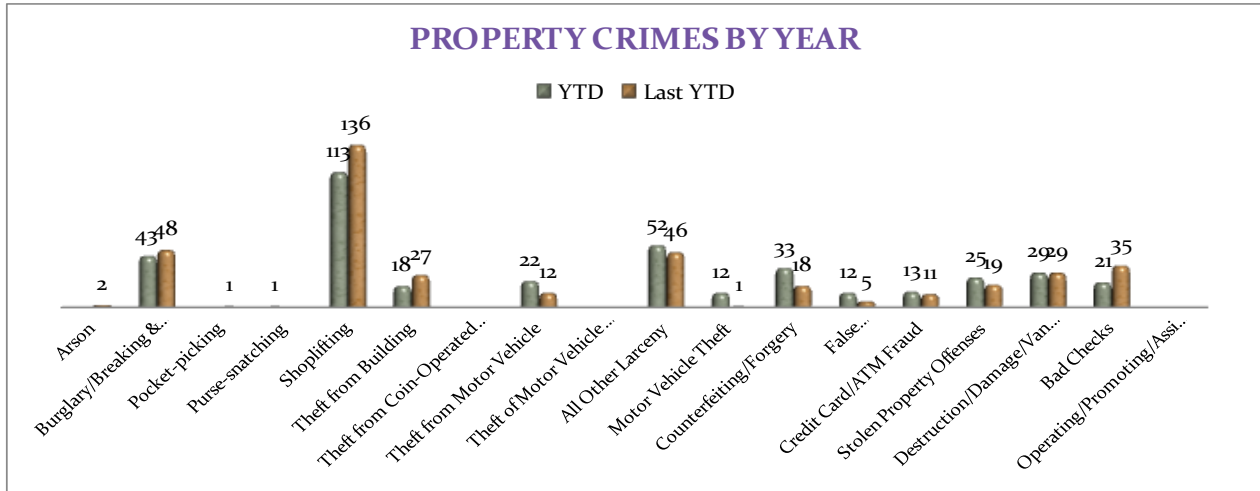


MONTHLY REPORT MARCH 2013

10 April 2013

To date this year, 394 property offenses have occurred, a 1% increase, comparing to the last year's data at this same time. The following significant changes are noted this year: Shoplifting is down, -17%; Bad Checks

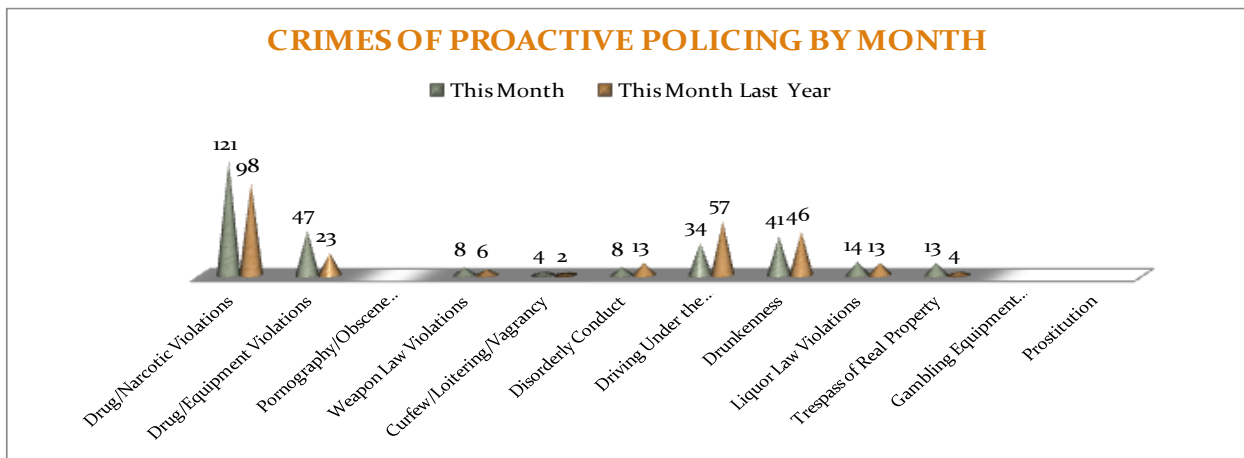
are down, -40%, while All Other Larceny is up, +13, Counterfeiting / Forgery is up, +83%. There are no other statistically significant changes noted for other offenses in this category.



CRIMES OF PROACTIVE POLICING

Crimes of Proactive Policing are those crimes that result from police officers actively policing the streets to combat certain types of street crime. As a chart below indicates, twelve crimes fall under this category. A total of 290 offenses have been reported this month, an 11% increase, comparing to March

of the last year. Drug/Narcotic Violations are 23% up and Drug/Equipment Violations are up 104%, while Driving Under the Influence is down 40% and Drunkenness is down 11%. There are no other statistically significant changes noted for other offenses in this category.

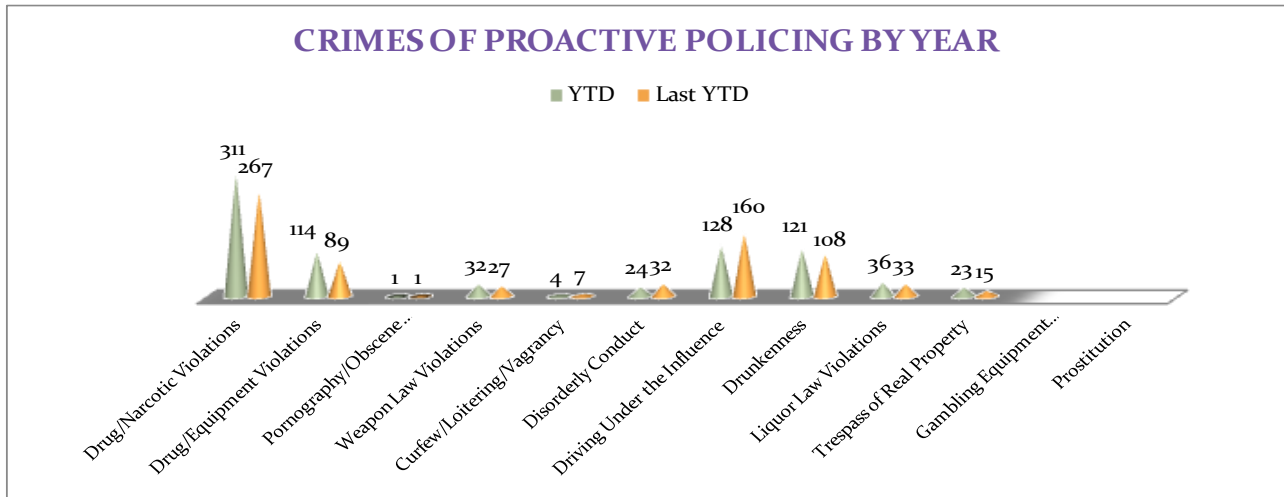


MONTHLY REPORT MARCH 2013

10 April 2013

To date for the year 2013, there have been 794 crimes of proactive policing reported, a 7% increase when comparing to the last year's to date data. Drug/ Narcotic Violations are up 16%, Drug / Equipment Violations are up 28%, Drunkenness is up 12%, and

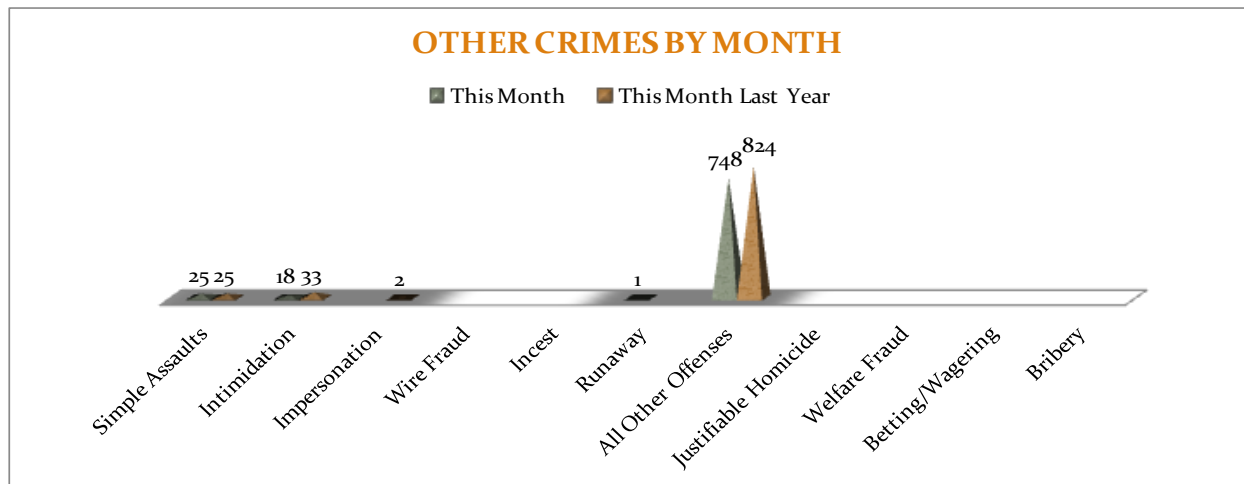
Trespass of Real Property is up 53% this year, while Driving Under Influence is down 20%. There are no other statistically significant changes noted for other offenses in this category.



OTHER CRIMES

There are 11 crimes that fall into the Other Crimes category. This month, there have been a total of 792 Other Crimes reported, a 10% decrease, comparing to March of the last

year (n = 884). Intimidation decreased by 45% and All other Offences decreased by 9%. No other significant changes are noted in this category of crimes this month.

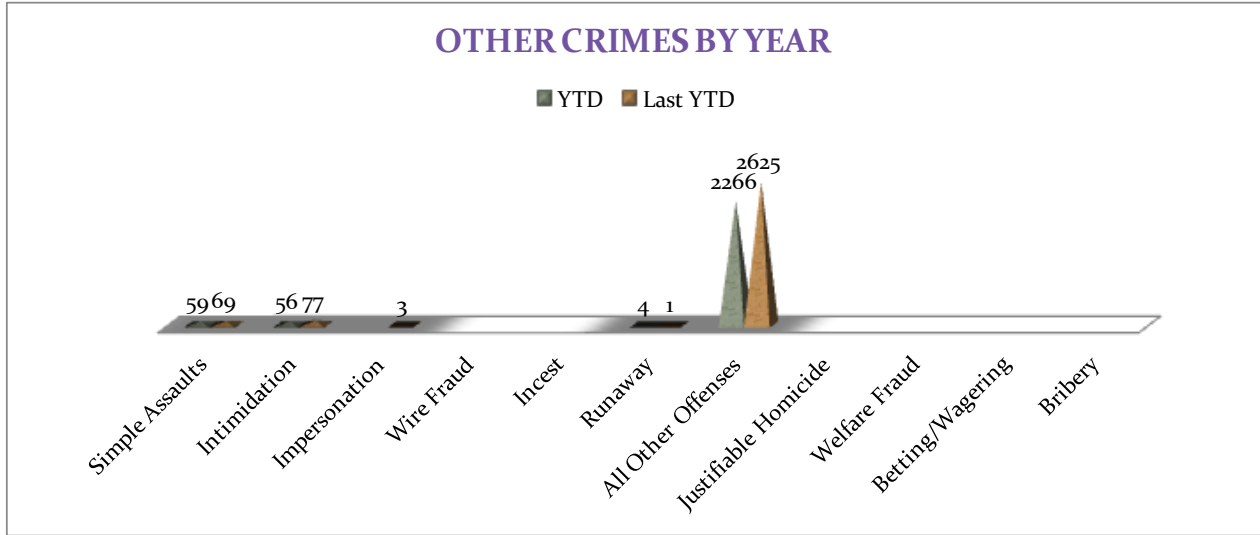


MONTHLY REPORT MARCH 2013

10 April 2013

To date this year, there have been 2385 Other Crimes offenses reported, a 14% decrease comparing to the last year's to date data. Intimidation offenses are down 27%, Simple Assaults decreased by 14%, and All

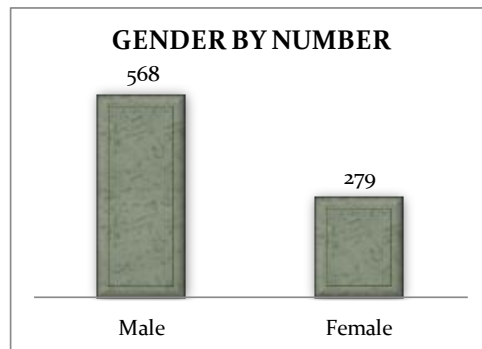
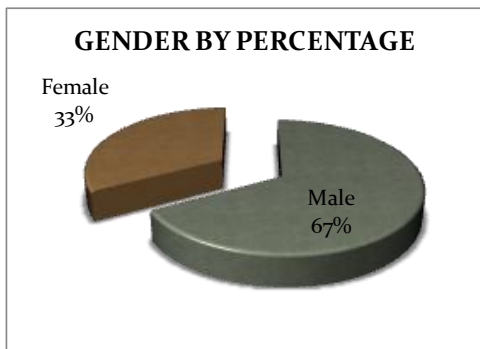
Other Offenses decreased by 14%. No other statistically significant changes have been observed for other offenses within this category, comparing to the last year's data.



ARREST DEMOGRAPHICS

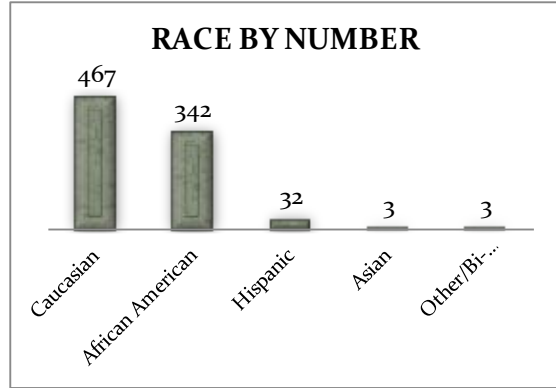
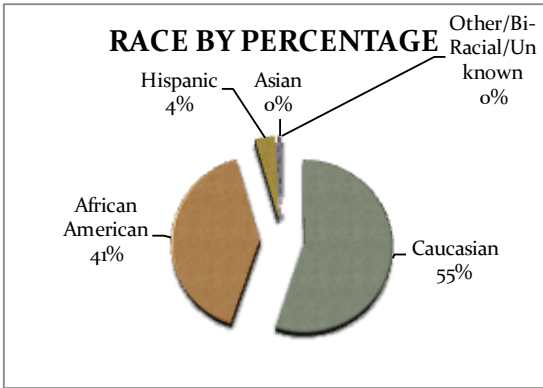
In March 2013, there were a total of 847 arrests carried out by the Jonesboro Police Department. Comparing with the last year's data for the month of March, there was a 4% decrease in arrests this month, which results in 67 arrests per 100 offenses in March of this year, comparing to 69 arrests per 100 offenses last year, a 3% decrease for arrests per 100 offenses. This section breaks down this month's arrests by race and gender. The

majority of arrestees, 67%, have been male ($n = 568$), as opposed to 33% of female arrestees ($n = 279$). As for the racial/ethnic composition, the majority of arrestees have been Caucasian (55%) and African American (41%) as opposed to Hispanic (4%), Asian (0%), or other/unknown/bi-racial (0%).



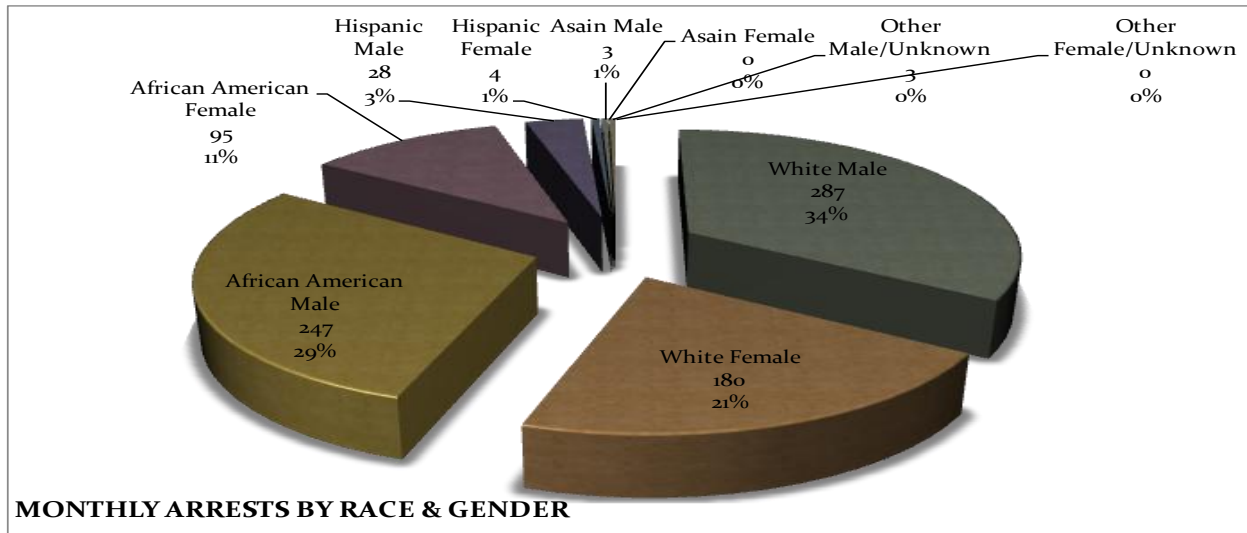
MONTHLY REPORT MARCH 2013

10 April 2013



Caucasian males make up the majority, 34%, of arrestees this month ($n = 287$). African American males make up 29% of arrestees for the month of March ($n = 247$). Caucasian females make up 21% ($n = 180$) and African American females make up 11% ($n = 95$) of

arrestees this month. Hispanic males make up 3% ($n = 28$), and Hispanic Females make up 1% ($n = 4$) of arrestees this month. There were 3 Asian males and 3 Males of unknown race or ethnicity arrested in March.



EMERGENCY 911

Also known as Public Safety Answering Point (PSAP), the Emergency 911 Division is responsible for answering all calls from public for emergency assistance, accessing the needed information to best assist, and then assigning the most efficient and effective emergency response. In addition,

this division is responsible for setting priority call dispatching to field units including Police, Fire, and EMS. Emergency 911 also maintains all records for radio logs, calls for service, and other emergency service data collections.

MONTHLY REPORT MARCH 2013

10 April 2013

Calls by Type	This Month	This Month Last Year	YTD	Last YTD	Change By Month	Change YTD
Land Line E911	683	784	2,118	2,278	-13%	-7%
Cell Phone E911	3,936	3,996	11,717	11,794	-2%	-1%
Admin Lines-non emer	14,270	16,142	42,272	46,264	-12%	-9%
TOTALS	18,889	20,922	56,107	60,336	-10%	-7%
Calls by Agency	This Month	This Month Last Year	YTD	Last YTD	Change By Month	Change YTD
Jonesboro PD Calls	6,098	6,794	19,163	20,787	-10%	-8%
Craighead Cty Sheriff	1,161	1,193	3,572	3,878	-3%	-8%
Jonesboro Fire Dpt - dispatch	199	258	610	617	-23%	-1%
Jonesboro Fire Dpt - Med Asst	148	122	410	307	21%	34%
Craighead Cty - Fire	52	92	121	207	-43%	-42%
Craighead Cty - 1st Responder	91	98	303	306	-7%	-1%
Emerson Ambulance	259	280	874	815	-8%	7%
Medic One	336	272	905	828	24%	9%
Air Evac	1	1	2	1	0%	100%
Coroner	4	4	14	11	0%	27%
ARK State Police	8	14	26	42	-43%	-38%
Jonesboro Animal Control	2	1	7	4	100%	75%
Wreckers Called	155	176	537	490	-12%	10%
TOTALS	8,514	9,305	26,544	28,293	-9%	-6%
Calls by Municipality	This Month	This Month Last Year	YTD	Last YTD	Change By Month	Change YTD
Bay PD	96	147	314	392	-35%	-20%
Bono PD	281	285	809	789	-1%	3%
Brookland PD	96	202	298	605	-52%	-51%
Caraway PD	81	190	238	529	-57%	-55%
Cash PD	2	21	6	68	-90%	-91%
Egypt PD	6	14	10	27	-57%	-63%
Lake City PD	134	173	346	490	-23%	-29%
Monette PD	105	168	281	522	-38%	-46%
TOTALS	801	1,200	2,302	3,422	-33%	-33%

UNIFORM PATROL DIVISION

The UPD is responsible for responding to calls into the Emergency – 911 Division by civilians and are normally the first responders. Jonesboro is divided into 6 patrol districts. Officers from UPD are

assigned to a district and work the same district every shift. In addition, when a Traffic Officer is not available, a UPD Officer will respond to traffic accidents and assist in directing traffic when necessary.

Incidents	This Month	This Month Last Year	YTD	Last YTD	Change By Month	Change YTD
Calls For Service	6,098	6,801	21,570	21,417	-10%	1%
Complaints	3,811	4,392	13,406	11,647	-13%	15%
Assists	942	1,286	2,962	3,537	-27%	-16%
Incident Reports	784	873	2,358	2,481	-10%	-5%
Street Accidents	97	90	203	205	8%	-1%
Private Property Accidents	53	50	116	132	6%	-12%
Traffic Stops	2,234	2,246	7,524	6,868	-1%	10%
Traffic Citations	572	769	1,808	2,134	-26%	-15%
Written Warnings	832	854	2,880	2,699	-3%	7%
DWI	25	48	100	133	-48%	-25%
Mis. Arrests	436	491	1,255	1,449	-11%	-13%
Felony Arrests	114	104	331	275	10%	20%
Warrants Served	1,129	1,388	3,207	4,132	-19%	-22%
Alarms	327	338	806	990	-3%	-19%
TOTALS	17,454	19,730	58,526	58,099	-12%	1%
Hours Worked	9,340	9,074	23,942	27,127	3%	-12%

MONTHLY REPORT MARCH 2013

10 April 2013

PROWL

The Prowl unit is a uniformed street crimes unit specializing in criminal patrol, narcotics enforcement, gang investigation, and prostitution activity. The unit conducts directed patrols, investigates citizen

complaints of street-level criminal activity, and directly assists the 2nd Judicial Drug Task Force. PROWL also assists any division within the Jonesboro Police Department at any time when needed.

Incidents	This Month	This Month Last Year	YTD	Last YTD	Change By Month	Change YTD
Street Accidents	0	0	0	0	N/C	N/C
Private Property Accidents	0	0	0	0	N/C	N/C
Traffic Citations	18	8	42	72	125%	-42%
DWI	0	0	0	0	N/C	N/C
Mis. Arrests	109	141	293	348	-23%	-16%
Felony Arrests	31	35	75	78	-11%	-4%
Drug Arrests	29	37	92	86	-22%	7%
Public Intoxication Arrests	0	0	0	0	N/C	N/C
Calls For Service	75	80	166	201	-6%	-17%
Alarms	0	0	0	0	N/C	N/C
Parking Citations	0	0	0	0	N/C	N/C
Written Warnings	82	34	165	129	141%	28%
Assists	0	0	0	0	N/C	N/C
TOTALS	344	335	833	914	3%	-9%
Value of Drugs Seized	\$ 5,610	\$ 24,435	\$ 35,840	\$ 36,085	-77%	-1%
Value of Asstes Seized	\$ 1,732	\$ 8,007	\$ 3,053	\$ 23,357	-78%	-87%
Patrol Miles	7,350	6,300	21,650	17,450	17%	24%

CRIMINAL INVESTIGATIVE DIVISION

The CID is responsible for conducting follow-up investigations into criminal acts reported to the Jonesboro Police Department. The primary goal is to collect and present evidence that conclusively leads

to a successful arrest. Additionally, CID is charged with clearing additional crimes, recovering stolen property, preventing additional crimes, and gathering intelligence information.

Investigations	This Month	This Month Last Year	YTD	Last YTD	Change By Month	Change YTD
Criminal Investigations Assigned	118	46	324	186	157%	74%
Criminal Investigations Closed	83	41	223	141	102%	58%
Cleared by Arrests	55	27	138	96	104%	44%
Unfounded	5	7	20	16	-29%	25%
Exceptionally Cleared	11	2	37	12	450%	208%
Filed With Prosecutors Office	11	2	20	10	450%	100%
TOTALS	283	125	762	461	126%	65%
Crimes Against Persons	This Month	This Month Last Year	YTD	Last YTD	Change By Month	Change YTD
Criminal Investigations Assigned	29	12	70	39	142%	79%
Criminal Investigations Closed	29	13	73	39	123%	87%
Cleared by Arrests	19	9	49	29	111%	69%
Unfounded	2	2	8	4	0%	100%
Exceptionally Cleared	3	1	9	2	200%	350%
Filed With Prosecutors Office	5	1	7	5	400%	40%
TOTALS	87	38	216	118	129%	83%

MONTHLY REPORT MARCH 2013

10 April 2013

Property Crimes	This Month	This Month Last Year	YTD	Last YTD	Change By Month	Change YTD
Criminal Investigations Assigned	82	31	228	133	165%	71%
Criminal Investigations Closed	41	25	116	89	64%	30%
Cleared by Arrests	32	18	80	65	78%	23%
Unfounded	1	6	7	12	-83%	-42%
Exceptionally Cleared	7	1	23	9	600%	156%
Filed With Prosecutors Office	1	0	6	3	N/C	100%
TOTALS	164	81	460	311	102%	48%
Crimes Against Children	This Month	This Month Last Year	YTD	Last YTD	Change By Month	Change YTD
Criminal Investigations Assigned	5	1	19	6	400%	217%
Criminal Investigations Closed	12	0	26	6	N/C	333%
Cleared by Arrests	4	0	9	2	N/C	350%
Unfounded	2	0	6	1	N/C	500%
Exceptionally Cleared	1	0	4	1	N/C	300%
Filed With Prosecutors Office	5	1	7	3	400%	133%
TOTALS	29	2	71	19	1350%	274%
Miscellaneous Investigations Assigned	2	2	7	6	0%	17%
Miscellaneous Investigations Cleared	1	2	3	4	-50%	-25%
FINGERPRINTS	This Month	This Month Last Year	YTD	Last YTD	Change By Month	Change YTD
Rolled for the Public	296	155	n/a	n/a	n/a	n/a

WARRANTS

The Warrants Division is responsible for serving warrants, criminal summonses, and subpoenas that are issued by the District Court. On city court days, the Warrants Division provides a bailiff for court and a transport officer. In addition, this Division is

responsible for transporting wanted persons arrested in other jurisdictions back to Jonesboro. The STEP program operates within this division and is a grant-funded operation in which officers can get paid overtime to enforce the safety belt law.

Arrests	This Month	This Month Last Year	YTD	Last YTD	Change By Month	Change YTD
Misdemeanor	974	1491	2727	4218	-35%	-35%
Felony	0	0	0	2	N/C	-100%
Total Arrests	974	1491	2727	4220	-35%	-35%
Warrants by Activity	This Month	This Month Last Year	YTD	Last YTD	Change By Month	Change YTD
Subpoenas	479	237	1937	1178	102%	64%
Commitments	8	8	13	13	0%	0%
Traffic Citations	2	0	2	11	N/C	-82%
Complaints	3	0	5	1	N/C	400%
Assist	0	0	2	0	N/C	N/C
Alarms	0	0	0	0	N/C	N/C
Hours by Activity	This Month	This Month Last Year	YTD	Last YTD	Change By Month	Change YTD
SI Criminal	150.82	235.5	607.15	725.5	-36%	-16%
Court	110.33	104.5	352.17	321.33	6%	10%
Prisoner Transport	23.5	38.5	90.17	80.5	-39%	12%
Hours Worked	This Month	This Month Last Year	YTD	Last YTD	Change By Month	Change YTD
Regular Hours Worked	546	551	1792	1797	-1%	0%
Overtime Hours Worked	2.3	3	10.8	15	-23%	-28%
TOTAL Hours Worked	548.3	554	1802.8	1812	-1%	-1%
Mileage	This Month	This Month Last Year	YTD	Last YTD	Change By Month	Change YTD
Total Mileage	2246	2476	8690	7462	-9%	16%

MONTHLY REPORT MARCH 2013

10 April 2013

STEP	This Month	This Month Last Year	YTD	Last YTD	Change By Month	Change YTD
DWI Arrest	0	2	0	5	-100%	-100%
DUI Arrest	0	0	0	0	N/C	N/C
Traffic Citations	30	222	125	694	-86%	-82%
Felony Arrests	0	1	1	2	-100%	-50%
Drug Arrests	0	0	0	0	N/C	N/C
STEP TOTALS	30	225	126	701	-87%	-82%
STEP Hours Worked	16	175.5	135	512.5	-91%	-74%
STEP Miles Driven	54	1101.4	776	3450.4	-95%	-78%

DRUG TASK FORCE

The DTF is responsible for investigating major drug traffickers in the area, including all types of illegal drugs.

The DTF works closely with local, state, and federal agencies to eradicate drugs from the community.

INVESTIGATIONS	This Month	This Month Last Year	YTD	Last YTD	Change By Month	Change YTD
Opened	25	31	60	78	-19%	-23%
Closed	23	22	44	58	5%	-24%
TOTAL	48	53	104	136	-9%	-24%
With Nexus to Jonesboro	This Month	This Month Last Year	YTD	Last YTD	Change By Month	Change YTD
Opened	24	27	61	73	-11%	-16%
Closed	0	0	0	0	N/C	N/C
TOTAL	24	27	61	73	-11%	-16%
Outside Jonesboro (No Known Nexus)	This Month	This Month Last Year	YTD	Last YTD	Change By Month	Change YTD
Opened	0	2	0	3	1300%	-100%
Closed	0	0	0	0	0%	N/C
TOTAL	0	2	0	3	-100%	-100%
ASSISTANCE RENDERED	This Month	This Month Last Year	YTD	Last YTD	Change By Month	Change YTD
Assist to Outside Agencies	0	1	0	7	-100%	-100%
Assist to Jonesboro UPD/CID	18	18	26	43	0%	-40%
ARRESTS	This Month	This Month Last Year	YTD	Last YTD	Change By Month	Change YTD
Miscellaneous	7	8	18	30	-13%	-40%
Felony	39	37	84	83	5%	1%
Marijuana	14	4	22	9	250%	144%
Cocaine	2	2	4	6	0%	-33%
Crack Cocaine	2	2	4	6	0%	-33%
Methamphetamine/ICE	14	10	32	28	40%	14%
LSD	0	0	0	0	N/C	N/C
Extasy (MDMA or Other Designer Drug)	1	1	0	0	0%	N/C
Prescription	5	2	10	5	150%	100%
Opiates (Heroin, Opium)	0	0	0	0	N/C	N/C
Labs	0	0	0	2	N/C	-100%
All Other Drug Offenses	15	4	29	4	275%	625%
ASSET FORFEITURE	This Month	This Month Last Year	YTD	Last YTD	Change By Month	Change YTD
Vehicles Seized (No.)	\$ -	\$ -	\$ -	\$ -	N/C	N/C
Value of Assets Seized (Includes Value of vehicles)	\$ -	\$ -	\$ -	\$ 2,400.00	N/C	-100%
Asset Value Awarded to Jonesboro PD (State)	\$ -	\$ -	\$ -	\$ -	N/C	N/C
Asset Value Awarded to Jonesboro PD (Federal)	\$ -	\$ -	\$ -	\$ -	N/C	N/C
Asset Value Awarded to Jonesboro PD (Total)	\$ -	\$ -	\$ -	\$ -	N/C	N/C

MONTHLY REPORT MARCH 2013

10 April 2013

ARRESTS DEMOGRAPHICS	This Month	This Month Last Year	YTD	Last YTD	Change By Month	Change YTD
White	22	13	42	32	69%	31%
African American	7	14	18	24	-50%	-25%
Latino	1	1	3	10	0%	-70%
Asian	0	0	0	0	N/C	N/C
Other/Bi-Racial	0	0	0	0	N/C	N/C
Male	21	22	46	48	-5%	-4%
Female	9	8	18	18	13%	0%
White Male	14	7	28	20	100%	40%
White Female	8	4	14	10	100%	40%
African American Male	6	12	15	19	-50%	-21%
African American Female	1	2	3	6	-50%	-50%
Latino Male	1	1	2	8	0%	-75%
Latino Female	0	0	0	0	N/C	N/C
Asian Male	0	0	0	0	N/C	N/C
Asian Female	0	0	0	0	N/C	N/C
Other/Bi-Racial Male	0	0	0	0	N/C	N/C
Other/Bi-Racial Female	0	0	0	0	N/C	N/C

TRAFFIC

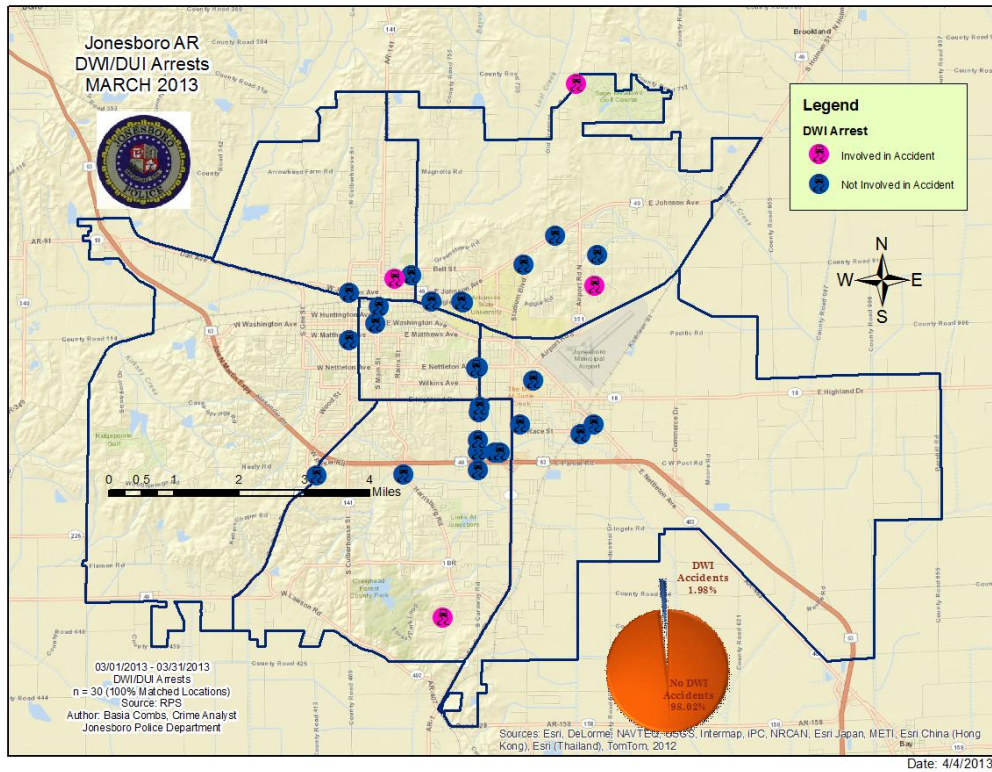
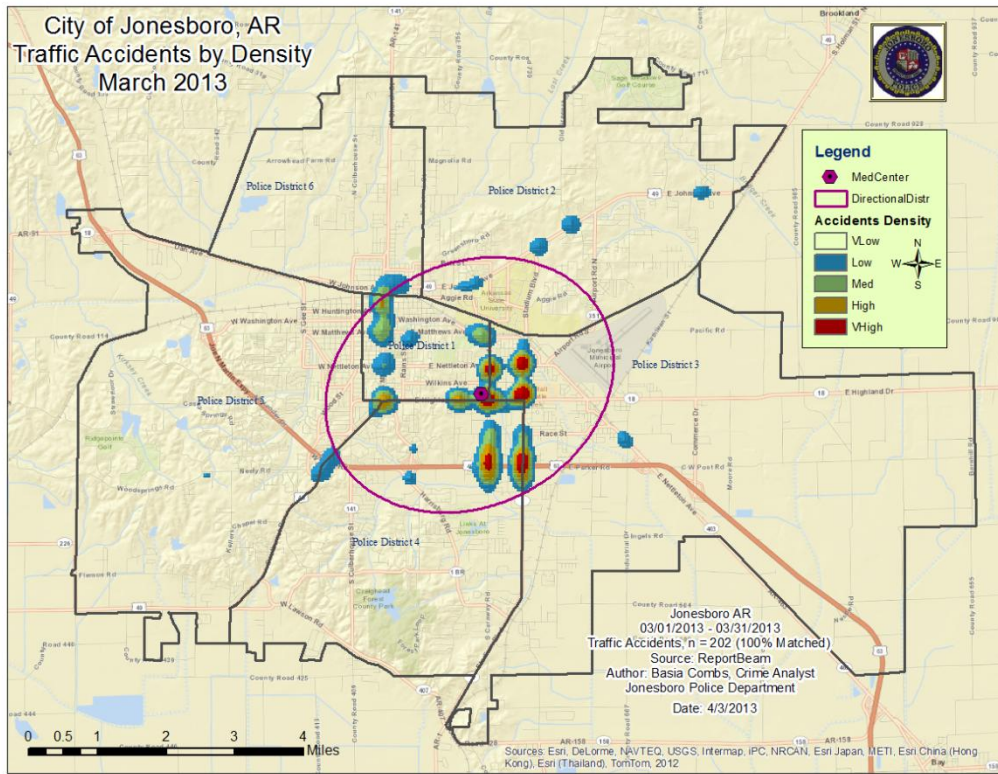
Comprised of three motor units and three Chargers, the Traffic Enforcement Unit responds to traffic accidents and provides increased enforcement in particularly challenging areas. This unit also provides

extra coverage for specific congestion problems and special events in the community. Last, they work details targeting specific issues, such as DWI enforcement and traffic safety checkpoints.

Incidents	This Month	This Month Last Year	YTD	Last YTD	Change By Month	Change YTD
Street Accidents	108	147	401	422	-27%	-5%
Private Property Accidents	37	35	99	114	6%	-13%
Traffic Citations	69	145	265	413	-52%	-36%
DWI	1	2	2	6	-50%	-67%
Mis. Arrests	12	21	17	41	-43%	-59%
Felony Arrests	0	0	2	0	N/C	N/C
Drug Arrests	0	0	0	0	N/C	N/C
Public Intoxication Arrests	0	0	0	0	N/C	N/C
Calls For Service	179	241	579	697	-26%	-17%
Alarms	0	0	0	0	N/C	N/C
Parking Citations	0	0	0	0	N/C	N/C
Written Warnings	57	113	229	313	-50%	-27%
TOTALS	463	704	1594	2006	-34%	-21%
Value of Asstes Seized	\$0	\$0	\$0	\$0	N/C	N/C
Patrol Miles	4,063	5,648	11,078	17,598	-28%	-37%
Hours Worked	581	774	2208	2604.5	-25%	-15%

MONTHLY REPORT MARCH 2013

10 April 2013



MONTHLY REPORT MARCH 2013

10 April 2013

ANIMAL CONTROL

The Animal Control Division is responsible for educating the public on safe and humane issues regarding animal treatment, enforcing all animal laws and ordinances, assisting the

public in resolving animal issues, and protecting the safety and welfare of the citizens and animals in this community.

Incident/Service	This Month	This Month Last Year	YTD	Last YTD	Change By Month	Change YTD
Barking Complaints	6	9	22	21	-33%	5%
Bite Reports	3	13	9	22	-77%	-59%
Door Hangers	41	54	143	168	-24%	-15%
Welfare Checks	26	168	104	391	-85%	-73%
Advised of Rights	738	772	2697	2435	-4%	11%
Incident Reports	1	8	4	17	-88%	-76%
Gone on Arrival	40	41	121	135	-2%	-10%
Complaints	512	959	2099	2313	-47%	-9%
Desk Complaints	1595	1604	4198	4225	-1%	-1%
Captured Dogs	141	114	410	454	24%	-10%
Captured Cats	31	12	46	18	158%	156%
Captured Wildlife	16	33	43	52	-52%	-17%
Chemical Captures	1	1	3	7	0%	-57%
Traps	14	23	55	32	-39%	72%
Deceased Animals	39	109	138	283	-64%	-51%
Assist J.P.D.	3	6	11	10	-50%	10%
Assist C.S.O.	2	0	4	0	N/C	N/C
Public Relations	356	397	1056	1296	-10%	-19%
Incident/Service	This Month	This Month Last Year	YTD	Last YTD	Change By Month	Change YTD
CITATIONS ISSUED	29	47	98	198	-38%	-51%
WARNINGS ISSUED	82	22	280	94	273%	198%
Physical Arrests	0	3	9	3	-100%	200%
City Warrants Served	0	9	26	17	-100%	53%
County Warrants Served	0	0	2	0	N/C	N/C
Felony Bench Warrants	0	0	1	0	N/C	N/C
Euthanized	80	72	226	206	11%	10%
Deceased Animals Landfill lbs.	3380	2600	9460	10000	30%	-5%
Wildlife Euthanized	16	33	43	52	-52%	-17%
Sent to Rescue Centers	2	13	2	34	-85%	-94%
Adoptions	40	42	108	135	-5%	-20%
Miles Driven	9,244	7485	24,794	20,102	24%	23%

FLEET MAINTNANCE

The Fleet Maintenance is responsible for all of the police vehicle maintenance upkeep, cleanliness, and purchasing. In addition, this

Division handles most of the purchasing of equipment, supplies, and uniforms for all of the Police Department.

Repair Costs by Model Year	This Month	This Month Last Year	YTD	Last YTD	Change By Month	Change YTD
95-99	\$0.00	\$0.00	\$0.00	\$0.00	N/C	N/C
2000	\$0.00	\$0.00	\$0.00	\$0.00	N/C	N/C
2001	\$0.00	\$0.00	\$0.00	\$300.46	N/C	-100%
2002	\$0.00	\$0.00	\$0.00	\$0.00	N/C	N/C
2003	\$227.72	\$0.00	\$227.72	\$0.00	N/C	N/C
2004	\$37.43	\$0.00	\$37.43	\$1,143.07	N/C	-97%
2005	\$0.00	\$0.00	\$0.00	\$556.46	N/C	-100%
2006	\$813.59	\$3,432.87	\$2,227.83	\$6,702.05	-76%	-67%
2007	\$477.72	\$1,423.99	\$4,846.30	\$3,632.20	-66%	33%
2008	\$18.54	\$290.19	\$1,270.49	\$698.16	-94%	82%
2009	\$132.87	\$301.15	\$923.17	\$440.38	N/C	N/C
2010	\$0.00	\$489.28	\$430.96	\$489.28	N/C	N/C
2011	\$132.87	\$0.00	\$466.43	\$469.69	N/C	N/C
2012	\$0.00	\$0.00	\$0.00	\$0.00	N/C	N/C
2013	\$0.00	n/a	\$0.00	n/a	N/C	N/C
Totals	\$1,840.74	\$5,937.48	\$10,430.33	\$14,431.75	-69%	-28%

MONTHLY REPORT MARCH 2013

10 April 2013

Routine Preventative Maintenance by Model Year	This Month	This Month Last Year	YTD	Last YTD	Change By Month	Change YTD
95-99	\$0.00	\$0.00	\$0.00	\$0.00	N/C	N/C
2000	\$0.00	\$20.00	\$20.00	\$20.00	-100%	0%
2001	\$166.59	\$0.00	\$166.59	\$0.00	N/C	N/C
2002	\$0.00	\$80.46	\$0.00	\$100.46	-100%	-100%
2003	\$85.00	\$80.00	\$327.59	\$172.00	6%	90%
2004	\$30.00	\$20.00	\$525.89	\$149.00	50%	253%
2005	\$0.00	\$93.50	\$507.74	\$391.85	-100%	30%
2006	\$1,261.24	\$1,838.73	\$4,369.50	\$5,829.61	-31%	-25%
2007	\$1,184.49	\$340.25	\$2,909.34	\$4,293.50	248%	-32%
2008	\$854.82	\$120.00	\$2,007.95	\$1,472.54	612%	36%
2009	\$1,113.79	\$570.62	\$1,671.39	\$2,569.37	N/C	N/C
2010	\$313.89	\$176.20	\$523.89	\$643.15	N/C	N/C
2011	\$1,413.61	\$164.50	\$4,314.35	\$396.50	N/C	N/C
2012	\$333.42	\$0.00	\$353.42	\$0.00	N/C	N/C
2013	\$162.75	n/a	\$732.37	n/a	N/C	N/C
Totals	\$6,919.60	\$3,504.26	\$18,430.02	\$16,037.98	97%	15%

RECORDS

The Records Division is responsible for providing administrative and clerical support to the department. Major responsibilities include entering the accident and incident reports and tickets into the records database management system, assisting the general

public for report requests, performing criminal backgrounds, serving as a switchboard at times, performing validations, and setting up and managing the payment plans out of court.

RECORDS	This Month	This Month Last Year	YTD	Last YTD	Change By Month	Change YTD
Incident/Arrest Reports Processed	1159	1240	3499	3790	-7%	-8%
Accident Reports Processed	201	226	605	610	-11%	-1%
Citations Processed	3242	4571	9558	13068	-29%	-27%
Warnings Processed	805	649	2565	2399	24%	7%
Backgrounds	23	13	67	48	77%	40%
Fingerprints	236	155	639	388	52%	65%
Photos	0	0	3	0	N/C	N/C
Accident Requests	93	105	356	401	-11%	-11%
Accident Requests Online	113	118	390	294	-4%	33%
TOTALS	5,872	7,077	17,682	20,998	-17%	-16%

PROFESSIONAL STANDARDS

The Office of Professional Standards, a unit within Administration, is charged with the compilation and updating of an extensive set of policies and procedures and providing a general operations guideline and code of conduct for officers to follow. In the event

that a member of the public does experience a negative interaction with an officer, mechanisms are in place for them to lodge a complaint. All complaints are reviewed and investigations completed in a timely manner.

MONTHLY REPORT MARCH 2013

10 April 2013

Professional Standards	This Month	This Month Last Year	YTD	Last YTD	Change By Month	Change YTD
Opened (TOTAL)	0	5	6	15	-100%	-60%
Closed	0	5	5	15	-100%	-67%
Inquiries	0	0	5	9	N/C	-44%
Formal Investigations	0	0	1	1	N/C	0%
Sustained	0	4	4	13	-100%	-69%
Not-Sustained	0	0	0	0	N/C	N/C
Exonerated	0	0	0	1	N/C	-100%
Unfounded	0	1	2	1	-100%	100%

END OF REPORT



Contact Information

Basia Combs, MPA, CCIA | Crime Analyst | Office of Crime Analysis & Criminal Intelligence
Jonesboro Police Department | 410 W Washington Ave | Jonesboro, AR 72401
Ph: 870-336-7196 | E-mail: bcombs@jonesboro.org | www.jonesboropolice.com