

JONESBORO POLICE DEPARTMENT

Monthly Report

May 2013

IN THIS REPORT

CRIME ANALYSIS	1
Total Crime	2
Crimes against Person	3
Property Crimes	4
Crimes of Proactive Policing	5
Other Crimes.....	6
Arrests Demographics	7
EMERGENCY 911	9
UPD	10
_PROWL	10
CID	11
WARRANTS	12
DRUG TASK FORCE	13
TRAFFIC	14
Maps	15
ANIMAL CONTROL	16
FLEET MAINTENANCE	16
RECORDS	17
PROFESSIONAL	
STANDARDS	18

The purpose of the Jonesboro Police Department Monthly Report is to compile data into one integrated report for review, allowing for a seamless flow of information for better decision-making. After each department collates their monthly numbers and sends it to the Office of Crime Analysis, it is organized into sections of departmental data, analyzed and packaged, and finally disseminated to department heads, the Chief of Police, the City Mayor, and the City Council. Major sections include Crime Analysis, Emergency 911, Uniform Police Division, Prowl, Criminal Investigative Division, Warrants, Drug Task Force, Traffic, Parking Enforcement, Animal Control, Fleet Maintenance, Records, and Professional Standards.

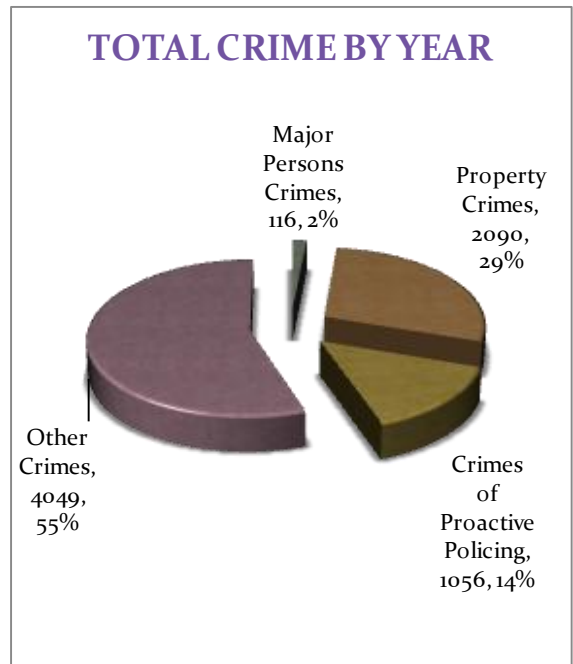
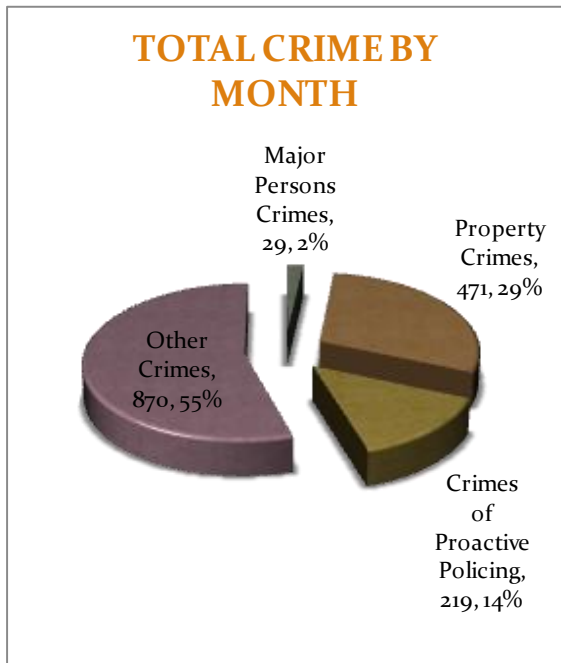
CRIME ANALYSIS

The Crime Analysis division consists of one Crime Analyst and one part-time Crime Analyst Assistant. The Crime Analyst position is responsible for the analysis and dissemination of crime activity data and the collection and maintenance of crime intelligence information for the city of Jonesboro. Additionally, the Crime Analyst is charged with providing the department with current and accurate crime maps, presenting crime activity data to audiences of interest, and with responding to requests for crime data from civilians and departmental staff. Data exported from this division is used by field agents for more effective, efficient policing, administration for improved staffing decisions, and the Mayor's office for community decision making and enhanced public relations. The following section is broken down into Total Crime, Crimes against Persons, Property Crimes, Crimes of Proactive Policing, Other Crimes, Arrest Demographics, and Total Crime Monthly Comparison.

TOTAL CRIME

The crime activity for the month of May 2013 was at a total of 1,589 NIBRIS reportable offenses, a 3% decrease, comparing to the total of offenses reported in May of the last year. With Jonesboro population estimated to be equal to 69,856, the crime rate in May of this year was at 23 crimes per 1,000 population, comparing to 24 crimes per 1,000 population last year¹, a 5% decrease. As indicated on a pie chart below, Other Crimes absorb the majority, 55%, of this month's crime activity (n = 870). Property Crimes fall into a second place and comprise of 29% of all the crimes (n = 471). Following in third and fourth places are, respectively, Crimes of Proactive Policing comprising of 14% (n = 219) of all the crimes, and Crimes against Persons, comprising of 2% (n = 29) of all the crimes this month.

Year to date data includes number of crimes from January through May 2013. A total of 7,311 NIBRIS reportable offenses were reported in 2013, a 9% decrease, comparing to the same period last year. The year to date crime rate amounts to 105 offenses per 1,000 population, compared to 117 offenses per 1,000 population last year (down 11%). To date this year, 55% of all the crimes is attributed to Other Crimes category (n = 4,049). Property Crimes amount to 29% of all the crimes (n = 2,090), Crimes of Proactive Policing comprise of 14% of all the crimes to date, where n = 1,056; Crimes against Persons comprise of 2% of a total year to date number of crimes (n = 116).

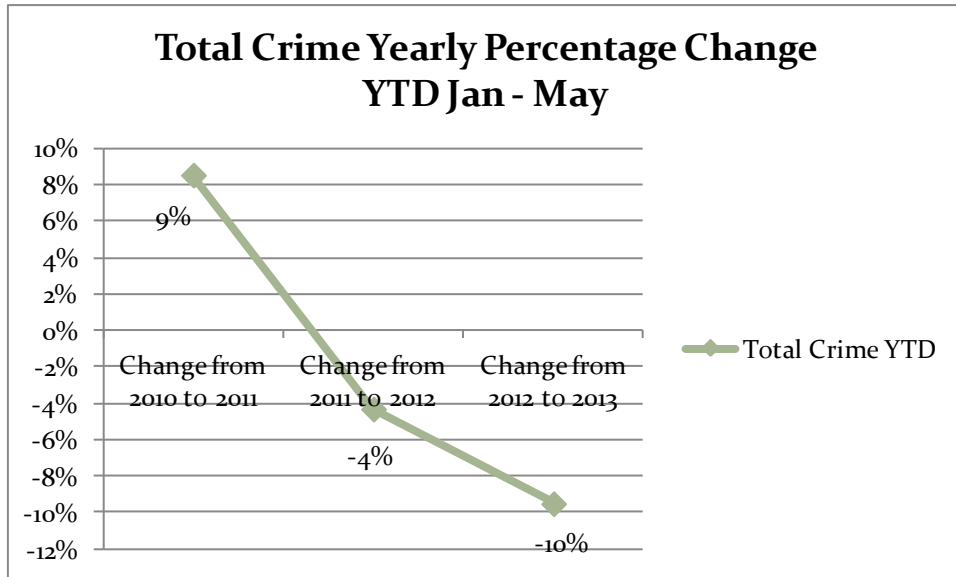
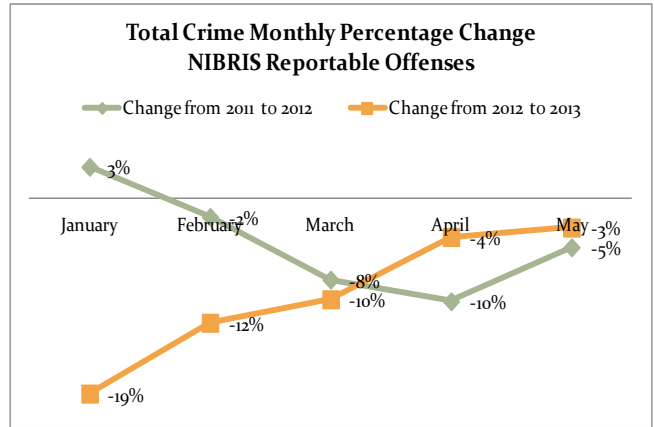
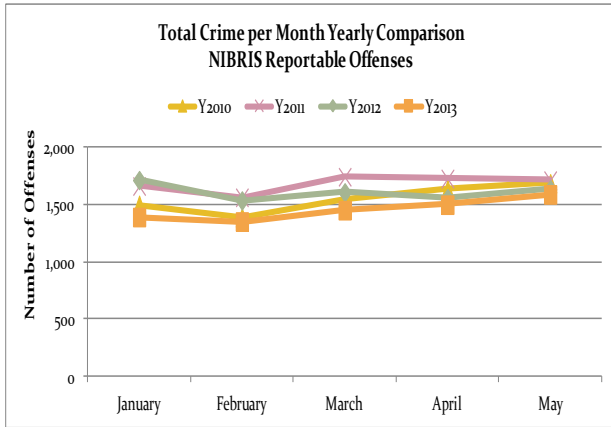


Line charts on the following page depict frequencies of crime and a monthly and yearly percentage change from the last year.

¹ Note: Population numbers are based on 2011 & 2012 population estimate, where 2011 population estimate is 68,547.

MONTHLY REPORT MAY 2013

11 June 2013



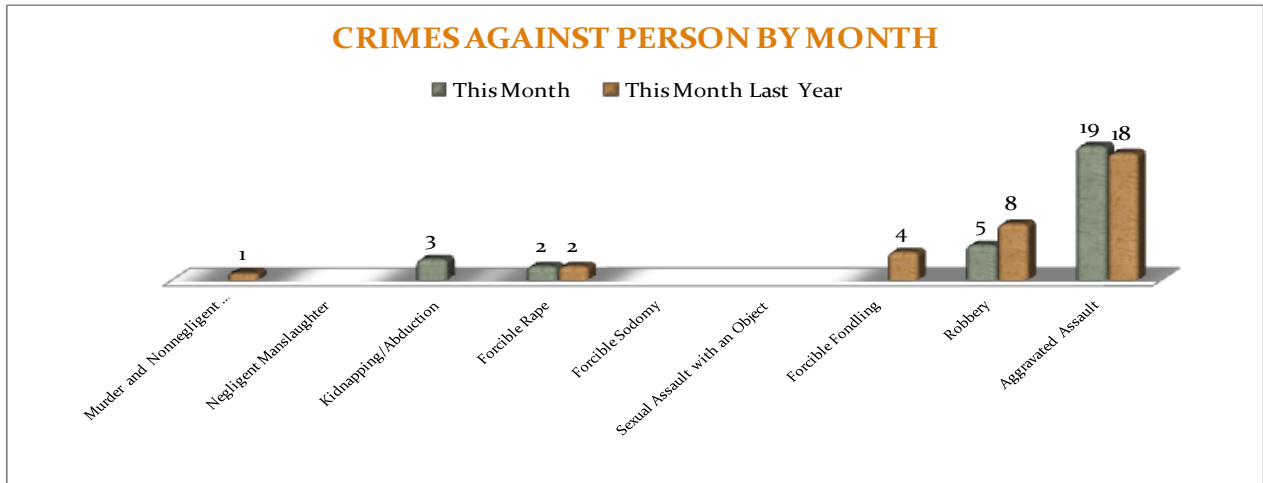
CRIMES AGAINST PERSONS

There are 9 crimes that make up this section. There were a total of 29 offenses in this area in May this year, a 12% decrease comparing to May of the last year. Forcible Fondling is

down by 4 offenses and robbery is down by 38%. As demonstrated on the bar chart below, there are no significant changes in frequencies for the crimes in this category.

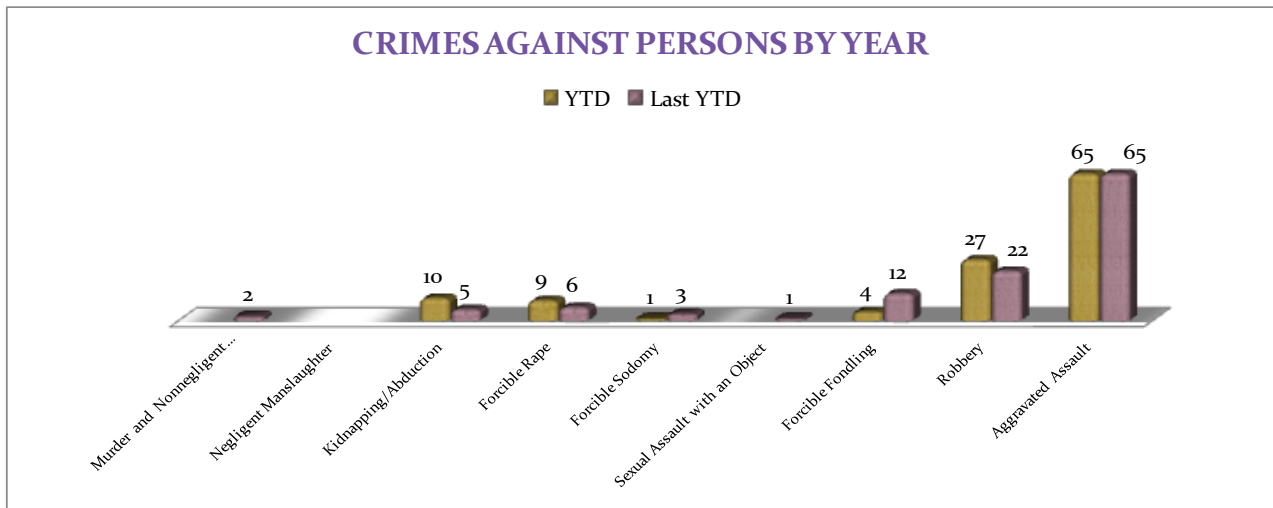
MONTHLY REPORT MAY 2013

11 June 2013



A bar graph below shows the year to date data for Crimes against Persons, which amounts to a total of 116 incidents for this category of crimes, no change, comparing to the year to date data of last year. There was

a 67% decrease in Forcible Fondling. Robbery is up 23%. There are no other significant changes in frequencies for the crimes in this category.



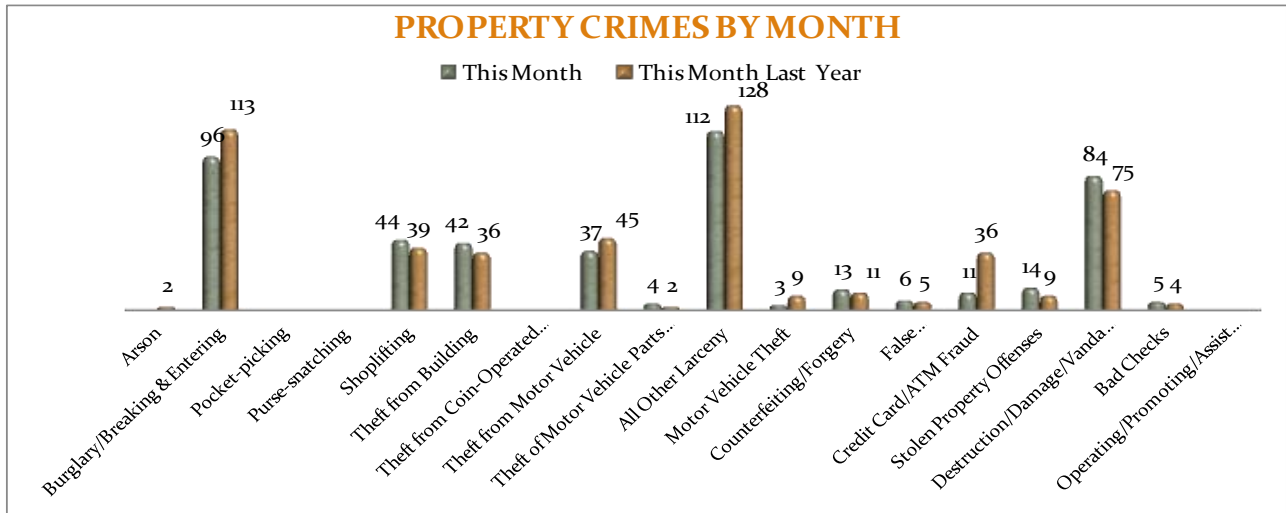
PROPERTY CRIMES

This section displays the criminal activity for 18 crimes, all against property. This month, there were a total of 471 Property Crimes, a 8% decrease comparing to May of the last year. The data indicates a significant change

in Credit Card/ATM Fraud (down 69%) and in All Other Larceny (down 13%). No other significant changes are noted this month for this crime category.

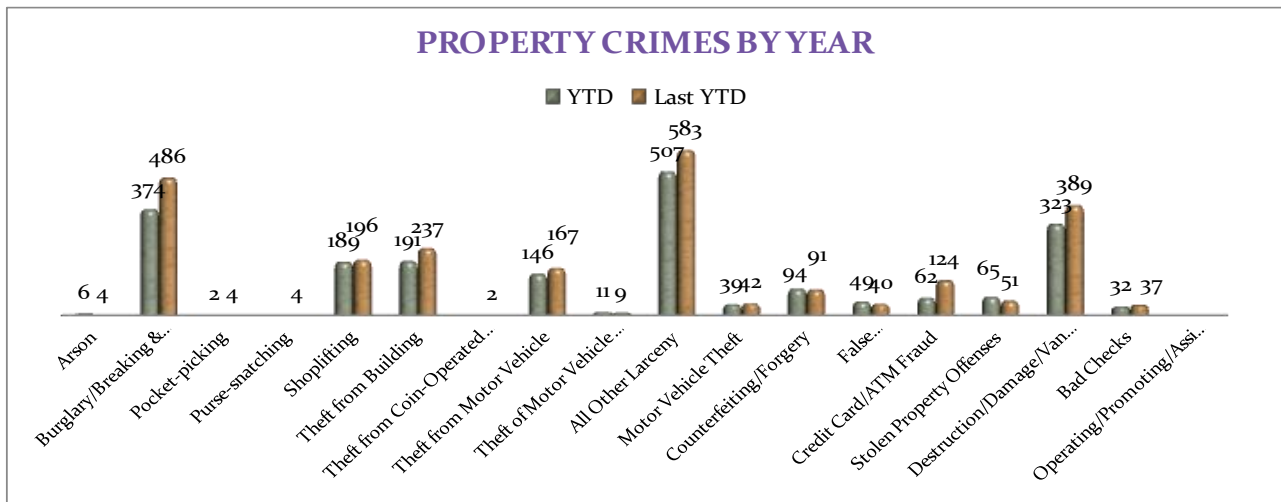
MONTHLY REPORT MAY 2013

11 June 2013



To date this year, 2090 property offenses have occurred, a 15% decrease, comparing to the last year's data at this same time. The following significant changes are noted this year: Credit Card/ATM Fraud is down, -50%; Burglary/Breaking & Entering is down, -23%,

Theft from Building is down, -19%, and Destruction/ Damage/Vandalism of Property is down, -17%. There are no other statistically significant changes noted for other offenses in this category.



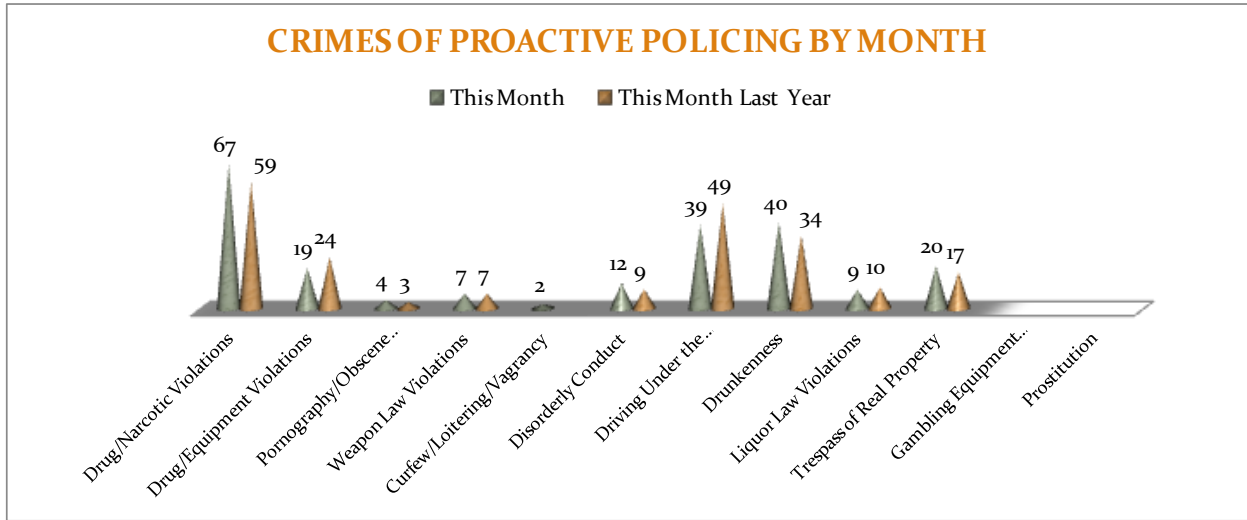
CRIMES OF PROACTIVE POLICING

Crimes of Proactive Policing are those crimes that result from police officers actively policing the streets to combat certain types of street crime. As a chart below indicates, twelve crimes fall under this category. A total of 219 offenses have been reported this month, a 3% increase, comparing to May of

the last year. Drug/Narcotic Violations are up, +14% and Disorderly Conduct is up +33%. Driving under the Influence is down, -20%. There are no other statistically significant changes noted for other offenses in this category.

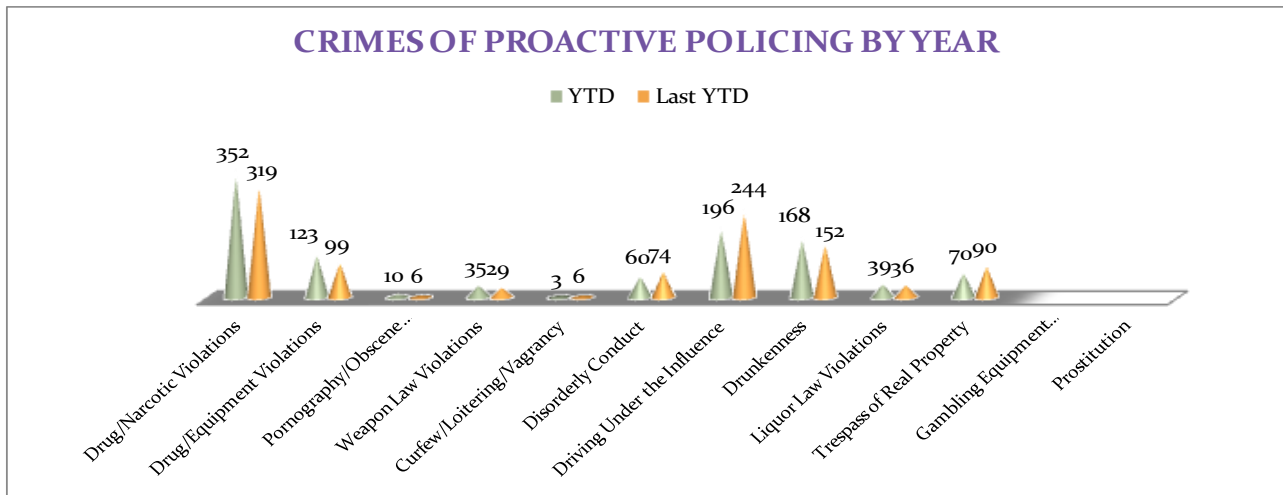
MONTHLY REPORT MAY 2013

11 June 2013



To date for the year 2013, there have been 1056 crimes of proactive policing reported, no change when comparing to the last year's to date data. Drug/ Narcotic Violations are up 10%, Drug / Equipment Violations are up

24%, and Drunkenness is up 11%, while Driving Under Influence is down 20% and Disorderly Conduct is down 19%. There are no other statistically significant changes noted for other offenses in this category.



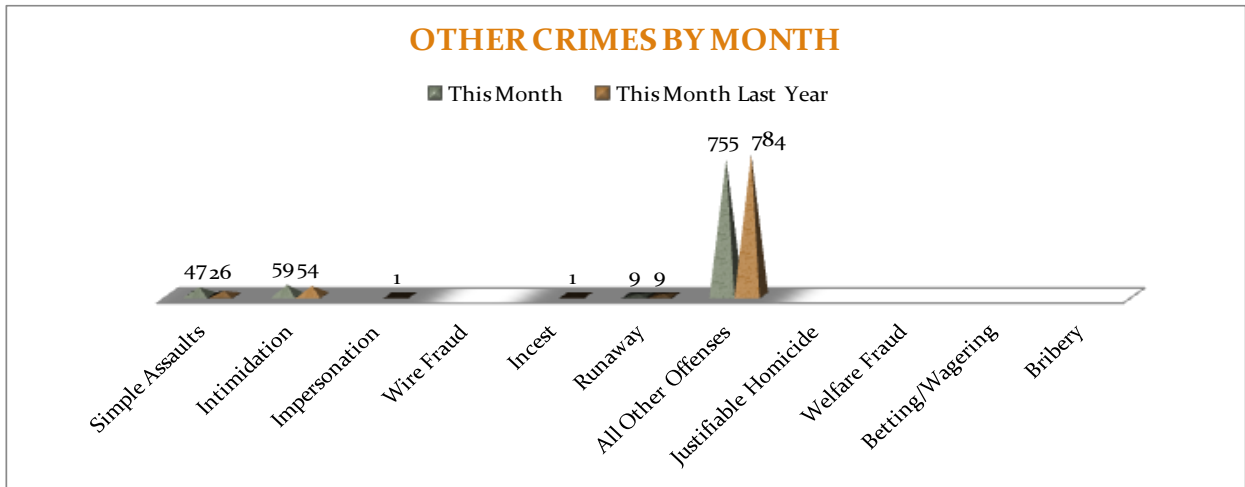
OTHER CRIMES

There are 11 crimes that fall into the Other Crimes category. This month, there have been a total of 870 Other Crimes reported, a 1% decrease, comparing to May of the last

year. Simple Assaults increased by 81%, while All Other Offences decreased by 4%. No other significant changes are noted in this category of crimes this month.

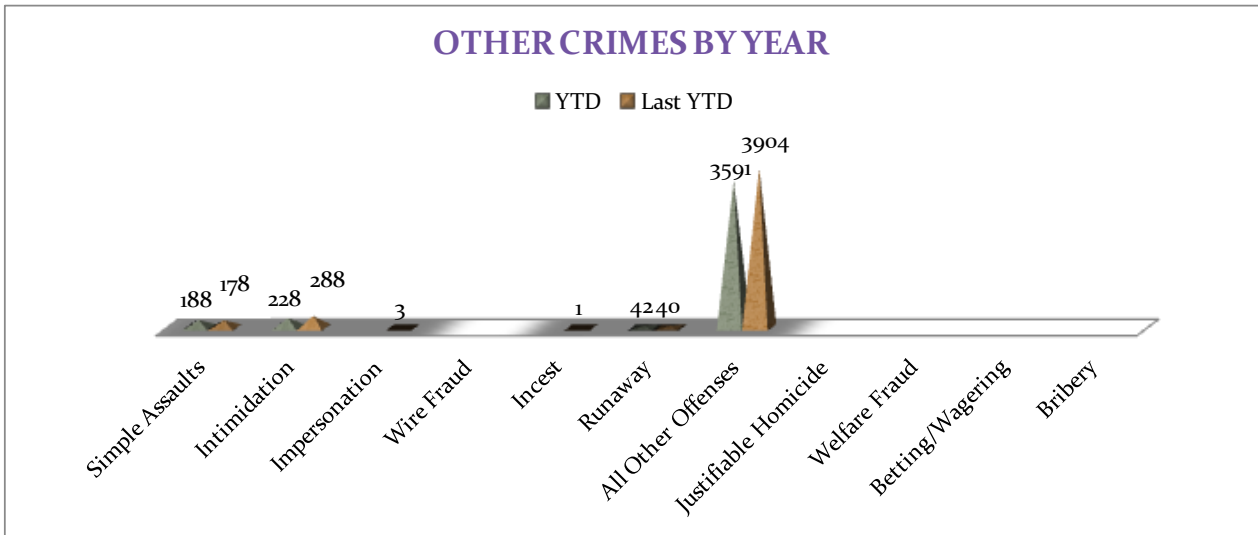
MONTHLY REPORT MAY 2013

11 June 2013



To date this year, there have been 4,049 Other Crimes offenses reported, an 8% decrease comparing to the last year's to date data. Intimidation offenses are down 21%, Simple Assaults increased by 6%, and All

Other Offenses decreased by 8%. No other significant changes have been observed for other offenses within this category, comparing to the last year's data.



ARREST DEMOGRAPHICS

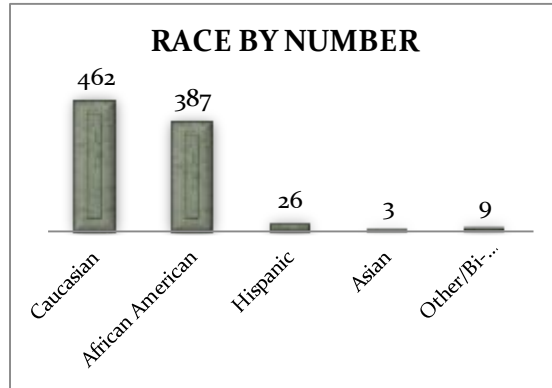
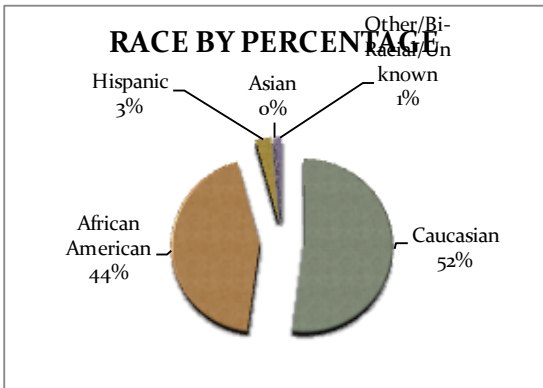
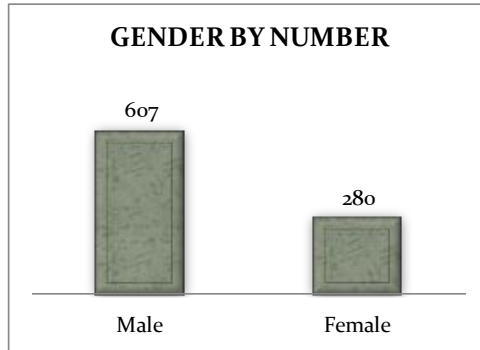
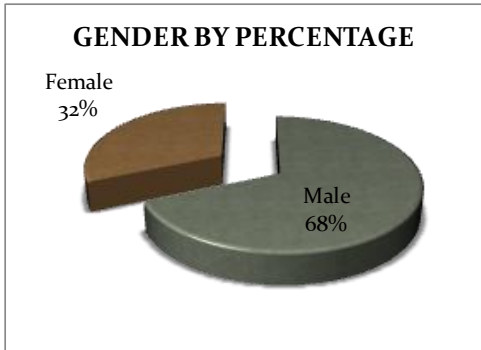
In May 2013, there were a total of 887 arrests carried out by the Jonesboro Police Department. Comparing with the last year's data for the month of May, there was a 1%

decrease in arrests this month, which results in 56 arrests per 100 offenses in May of this year, comparing to 54 arrests per 100 offenses last year, a 2.3% increase for arrests per 100

11 June 2013

offenses. This section breaks down this month's arrests by race and gender. The majority of arrestees, 68%, have been male ($n = 607$), as opposed to 32% of female arrestees ($n = 280$). As for the racial/ethnic

composition, the majority of arrestees have been Caucasian (52%) and African American (44%) as opposed to Hispanic (3%), Asian (0%), or other/unknown/bi-racial (1%).

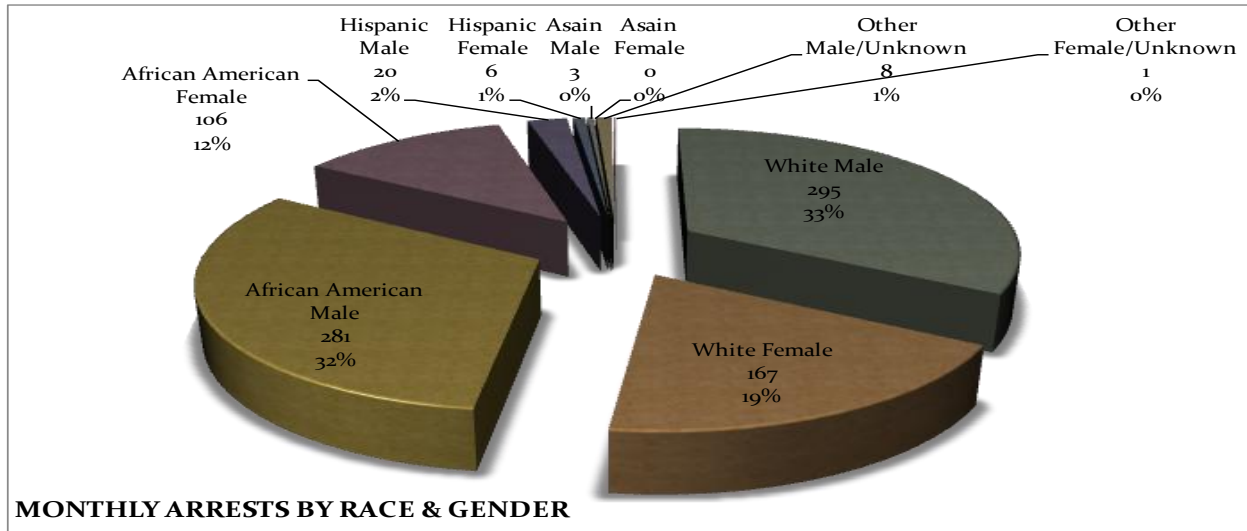


Caucasian males make up the majority, 33%, of arrestees this month ($n = 295$). African American males make up 32% of arrestees for the month of May ($n = 281$). Caucasian females make up 19% ($n = 167$) and African American females make up 12% ($n = 106$) of arrestees this month. Hispanic males make

up 2% ($n = 20$), while Hispanic Females make up 1% of arestees this mont ($n = 6$). There were 3 Asain male and 8 Males of unknown race or ethnicity and 1 female of unknown race or ethnicity arested in May.

MONTHLY REPORT MAY 2013

11 June 2013



EMERGENCY 911

Also known as Public Safety Answering Point (PSAP), the Emergency 911 Division is responsible for answering all calls from public for emergency assistance, accessing the needed information to best assist, and then assigning the most efficient and effective emergency response. In addition,

this division is responsible for setting priority call dispatching to field units including Police, Fire, and EMS. Emergency 911 also maintains all records for radio logs, calls for service, and other emergency service data collections.

Calls by Type	This Month	This Month Last Year	YTD	Last YTD	Change By Month	Change YTD
Land Line E911	901	761	3,671	3,814	18%	-4%
Cell Phone E911	4,483	4,205	20,387	19,827	7%	3%
Admin Lines-non emer	15,156	16,958	71,970	78,900	-11%	-9%
TOTALS	20,540	21,924	96,028	102,541	-6%	-6%
Calls by Agency	This Month	This Month Last Year	YTD	Last YTD	Change By Month	Change YTD
Jonesboro PD Calls	7,023	7,232	33,027	34,771	-3%	-5%
Craighead Cty Sheriff	1,327	1,289	6,074	6,325	3%	-4%
Jonesboro Fire Dpt - dispatch	177	222	997	1,071	-20%	-7%
Jonesboro Fire Dpt - Med Asst	136	127	672	560	7%	20%
Craighead Cty - Fire	36	70	206	343	-49%	-40%
Craighead Cty - 1st Responder	125	110	533	529	14%	1%
Emerson Ambulance	278	339	1,395	1,427	-18%	-2%
Medic One	324	252	1,542	1,316	29%	17%
Air Evac	0	0	2	3	N/C	-33%
Coroner	2	2	19	15	0%	27%
ARK State Police	16	12	52	73	33%	-29%
Jonesboro Animal Control	2	0	10	5	N/C	100%
Wreckers Called	157	158	856	799	-1%	7%
TOTALS	9,603	9,813	45,385	47,237	-2%	-4%

MONTHLY REPORT MAY 2013

11 June 2013

Calls by Municipality	This Month	This Month Last Year	YTD	Last YTD	Change By Month	Change YTD
Bay PD	129	111	583	573	16%	2%
Bono PD	337	213	1396	1261	58%	11%
Brookland PD	156	176	586	914	-11%	-36%
Caraway PD	43	121	331	777	-64%	-57%
Cash PD	68	42	79	141	62%	-44%
Egypt PD	17	10	34	44	70%	-23%
Lake City PD	175	123	653	771	42%	-15%
Monette PD	146	132	541	801	11%	-32%
TOTALS	1,071	928	4,203	5,282	15%	-20%

UNIFORM PATROL DIVISION

The UPD is responsible for responding to calls into the Emergency – 911 Division by civilians and are normally the first responders. Jonesboro is divided into 6 patrol districts. Officers from UPD are

assigned to a district and work the same district every shift. In addition, when a Traffic Officer is not available, a UPD Officer will respond to traffic accidents and assist in directing traffic when necessary.

Incidents	This Month	This Month Last Year	YTD	Last YTD	Change By Month	Change YTD
Calls for Service	7,023	7,232	35,435	35,401	-3%	0%
Complaints	4,509	3,963	21,746	19,748	14%	10%
Assists	892	1,206	4,771	5,999	-26%	-20%
Incident Reports	627	871	3,881	4,249	-28%	-9%
Street Accidents	90	69	368	364	30%	1%
Private Property Accidents	48	32	198	223	50%	-11%
Traffic Stops	2,088	1,854	11,736	10,401	13%	13%
Traffic Citations	534	729	2,951	3,489	-27%	-15%
Written Warnings	902	865	4,762	4,435	4%	7%
DWI	30	38	160	202	-21%	-21%
Mis. Arrests	460	457	2,192	2,352	1%	-7%
Felony Arrests	113	96	539	450	18%	20%
Warrants Served	1,283	1,461	4,490	6,830	-12%	-34%
Alarms	416	340	1,535	1,599	22%	-4%
TOTALS	19,015	19,213	94,764	95,742	-1%	-1%
Hours Worked	7,723	8,929	37,046	45,091	-14%	-18%

PROWL

The Prowl unit is a uniformed street crimes unit specializing in criminal patrol, narcotics enforcement, gang investigation, and prostitution activity. The unit conducts directed patrols, investigates citizen

complaints of street-level criminal activity, and directly assists the 2nd Judicial Drug Task Force. PROWL also assists any division within the Jonesboro Police Department at any time when needed.

MONTHLY REPORT MAY 2013

11 June 2013

Incidents	This Month	This Month Last Year	YTD	Last YTD	Change By Month	Change YTD
Street Accidents	0	0	0	0	N/C	N/C
Private Property Accidents	1	0	2	1	N/C	100%
Traffic Citations	19	40	79	161	-53%	-51%
DWI	0	0	0	1	N/C	-100%
Mis. Arrests	128	178	573	898	-28%	-36%
Felony Arrests	26	24	125	135	8%	-7%
Drug Arrests	23	17	146	137	35%	7%
Public Intoxication Arrests	0	0	0	1	N/C	-100%
Calls For Service	125	125	375	415	0%	-10%
Alarms	0	0	0	0	N/C	N/C
Parking Citations	0	0	0	0	N/C	N/C
Written Warnings	73	80	308	244	-9%	26%
Assists	0	0	0	0	N/C	N/C
TOTALS	395	464	1,608	1,993	-15%	-19%
Value of Drugs Seized	\$ 12,900	\$ 1,720	\$ 71,740	\$ 43,985	650%	63%
Value of Asstes Seized	\$ 9,250	\$ -	\$ 12,303	\$ 24,218	N/C	-49%
Patrol Miles	8,550	5,550	37,750	28,800	54%	31%

CRIMINAL INVESTIGATIVE DIVISION

The CID is responsible for conducting follow-up investigations into criminal acts reported to the Jonesboro Police Department. The primary goal is to collect and present evidence that conclusively leads

to a successful arrest. Additionally, CID is charged with clearing additional crimes, recovering stolen property, preventing additional crimes, and gathering intelligence information.

Investigations	This Month	This Month Last Year	YTD	Last YTD	Change By Month	Change YTD
Criminal Investigations Assigned	106	77	547	335	38%	63%
Criminal Investigations Closed	90	58	399	237	55%	68%
Cleared by Arrests	55	42	255	163	31%	56%
Unfounded	9	9	37	29	0%	28%
Exceptionally Cleared	13	5	63	21	160%	200%
Filed With Prosecutors Office	5	5	28	18	0%	56%
Crimes Against Persons	This Month	This Month Last Year	YTD	Last YTD	Change By Month	Change YTD
Criminal Investigations Closed	28	21	130	72	33%	81%
Cleared by Arrests	19	12	93	52	58%	79%
Unfounded	1	3	11	7	-67%	57%
Exceptionally Cleared	5	3	16	5	67%	220%
Filed With Prosecutors Office	3	2	10	8	50%	25%
Property Crimes	This Month	This Month Last Year	YTD	Last YTD	Change By Month	Change YTD
Criminal Investigations Assigned	57	55	369	234	4%	58%
Criminal Investigations Closed	45	37	212	146	22%	45%
Unfounded	8	4	18	18	100%	0%
Exceptionally Cleared	7	2	40	15	250%	167%
Filed With Prosecutors Office	0	2	8	7	-100%	14%
Crimes Against Children	This Month	This Month Last Year	YTD	Last YTD	Change By Month	Change YTD
Criminal Investigations Assigned	5	3	31	10	67%	210%
Criminal Investigations Closed	9	8	41	14	13%	193%
Cleared by Arrests	6	5	16	7	20%	129%
Unfounded	0	2	9	5	-100%	80%

MONTHLY REPORT MAY 2013

11 June 2013

Filed With Prosecutors Office	2	1	10	4	100%	150%
Miscellaneous Investigations Assigned	6	2	9	8	200%	13%
Miscellaneous Investigations Cleared	8	4	8	4	100%	100%
FINGERPRINTS	This Month	This Month Last Year	YTD	Last YTD	Change By Month	Change YTD
Rolled for the Public	178	108			n/a	n/a

WARRANTS

The Warrants Division is responsible for serving warrants, criminal summonses, and subpoenas that are issued by the District Court. On city court days, the Warrants Division provides a bailiff for court and a transport officer. In addition, this Division is

responsible for transporting wanted persons arrested in other jurisdictions back to Jonesboro. The STEP program operates within this division and is a grant-funded operation in which officers can get paid overtime to enforce the safety belt law.

Arrests	This Month	This Month Last Year	YTD	Last YTD	Change By Month	Change YTD
Misdemeanor	1035	1199	4827	5417	-14%	-11%
Felony		0	0	2	N/C	-100%
Total Arrests	1035	1199	4827	5419	-14%	-11%
Warrants by Activity	This Month	This Month Last Year	YTD	Last YTD	Change By Month	Change YTD
Subpoenas	739	420	3064	1598	76%	92%
Commitments	4	4	19	17	0%	12%
Traffic Citations		0	8	11	N/C	-27%
Complaints	1	3	10	4	-67%	150%
Assist		1	2	1	-100%	100%
Alarms		0	0	0	N/C	N/C
Hours by Activity	This Month	This Month Last Year	YTD	Last YTD	Change By Month	Change YTD
SI Criminal	235	141	1090.15	866.5	67%	26%
Court	114	131	586.17	452.33	-13%	30%
Prisoner Transport	34	51.5	151.17	132	-34%	15%
Hours Worked	This Month	This Month Last Year	YTD	Last YTD	Change By Month	Change YTD
Regular Hours Worked	657	559	3088.5	4153	18%	-26%
Overtime Hours Worked	3	3	15.8	18	0%	-12%
TOTAL Hours Worked	660	562	3104.3	4171	17%	-26%
Mileage	This Month	This Month Last Year	YTD	Last YTD	Change By Month	Change YTD
Total Mileage	3778	2798	15804	10260	35%	54%

MONTHLY REPORT MAY 2013

11 June 2013

STEP	This Month	This Month Last Year	YTD	Last YTD	Change By Month	Change YTD
DWI Arrest		1	0	6	-100%	-100%
DUI Arrest		0	0	0	N/C	N/C
Traffic Citations		151	125	845	-100%	-85%
Felony Arrests		2	1	4	-100%	-75%
Drug Arrests		0	0	0	N/C	N/C
STEP TOTALS	0	154	126	855	-100%	-85%
STEP Hours Worked		89.5	135	602	-100%	-78%
STEP Miles Driven		504	776	3954.4	-100%	-80%

DRUG TASK FORCE

The DTF is responsible for investigating major drug traffickers in the area, including all types of illegal drugs.

The DTF works closely with local, state, and federal agencies to eradicate drugs from the community.

INVESTIGATIONS	This Month	This Month Last Year	YTD	Last YTD	Change By Month	Change YTD
Opened	21	33	95	135	-36%	-30%
Closed	20	18	79	102	11%	-23%
TOTAL	41	51	174	237	-20%	-27%
With Nexus to Jonesboro	This Month	This Month Last Year	YTD	Last YTD	Change By Month	Change YTD
Opened	18	30	96	128	-40%	-25%
Closed				0	N/C	N/C
TOTAL	18	30	96	128	-40%	-25%
Outside Jonesboro (No Known Nexus)	This Month	This Month Last Year	YTD	Last YTD	Change By Month	Change YTD
Opened	0	3	0	6	1300%	-100%
Closed	0	0		0	0%	N/C
TOTAL	0	3	0	6	-100%	-100%
ASSISTANCE RENDERED	This Month	This Month Last Year	YTD	Last YTD	Change By Month	Change YTD
Assist to Outside Agencies	0	22	0	31	-100%	-100%
Assist to Jonesboro UPD/CID	18	15	51	72	20%	-29%
ARRESTS	This Month	This Month Last Year	YTD	Last YTD	Change By Month	Change YTD
Miscellaneous	6	2	30	40	200%	-25%
Felony	24	23	125	138	4%	-9%
Marijuana	7	3	32	20	133%	60%
Cocaine	0	5	7	12	-100%	-42%
Crack Cocaine	0	2	4	17	-100%	-76%
Methamphetamine/ICE	8	5	46	42	60%	10%
LSD	0	0	0	0	N/C	N/C
Extasy (MDMA or Other Designer Drug)	2	0	2	0	N/C	N/C
Prescription	1	3	16	8	-67%	100%
Opiates (Heroin, Opium)	0	0	0	0	N/C	N/C
Labs	0	0	1	2	N/C	-50%
All Other Drug Offenses	5	8	38	18	-38%	111%
ASSET FORFEITURE	This Month	This Month Last Year	YTD	Last YTD	Change By Month	Change YTD
Vehicles Seized (No.)	\$ 2.00	\$ -	\$ 2.00	\$ -	N/C	N/C
Value of Assets Seized(Includes Value of vehicles)	\$ 6,700.00	\$ -	\$ 6,700.00	\$ 2,400.00	N/C	179%
Asset Value Awarded to Jonesboro PD (State)		\$ -	\$ -	\$ -	N/C	N/C
Asset Value Awarded to Jonesboro PD (Federal)		\$ -	\$ -	\$ -	N/C	N/C
Asset Value Awarded to Jonesboro PD (Total)		\$ -	\$ -	\$ -	N/C	N/C

MONTHLY REPORT MAY 2013

11 June 2013

ARRESTS DEMOGRAPHICS	This Month	This Month Last Year	YTD	Last YTD	Change By Month	Change YTD
White	15	13	64	54	15%	19%
African American	4	8	26	44	-50%	-41%
Latino	0	0	4	11	N/C	-64%
Asian	0	0	0	0	N/C	N/C
Other/Bi-Racial	0	0	0	0	N/C	N/C
Male	12	12	70	78	0%	-10%
Female	7	9	25	31	-22%	-19%
White Male	9	6	44	31	50%	42%
White Female	6	7	20	21	-14%	-5%
African American Male	3	6	22	35	-50%	-37%
African American Female	1	2	4	8	-50%	-50%
Latino Male	0	0	3	9	N/C	-67%
Latino Female	0	0	0	0	N/C	N/C
Asian Male	0	0	0	0	N/C	N/C
Asian Female	0	0	0	0	N/C	N/C
Other/Bi-Racial Male	0	0	0	0	N/C	N/C
Other/Bi-Racial Female	0	0	0	0	N/C	N/C

TRAFFIC

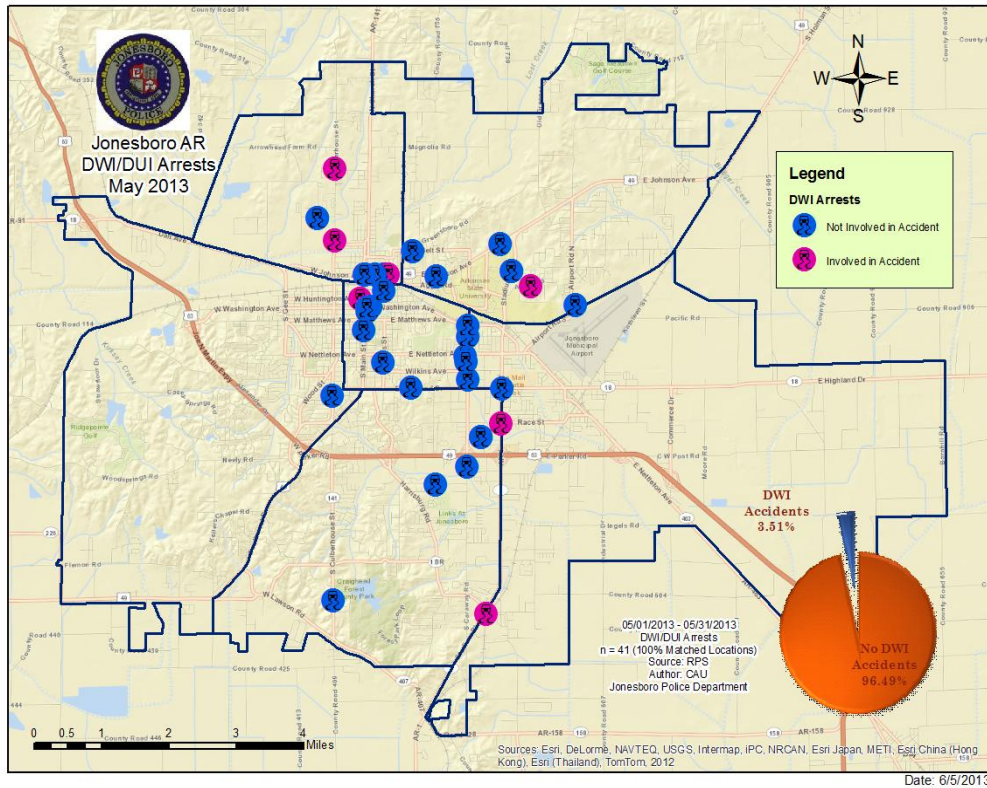
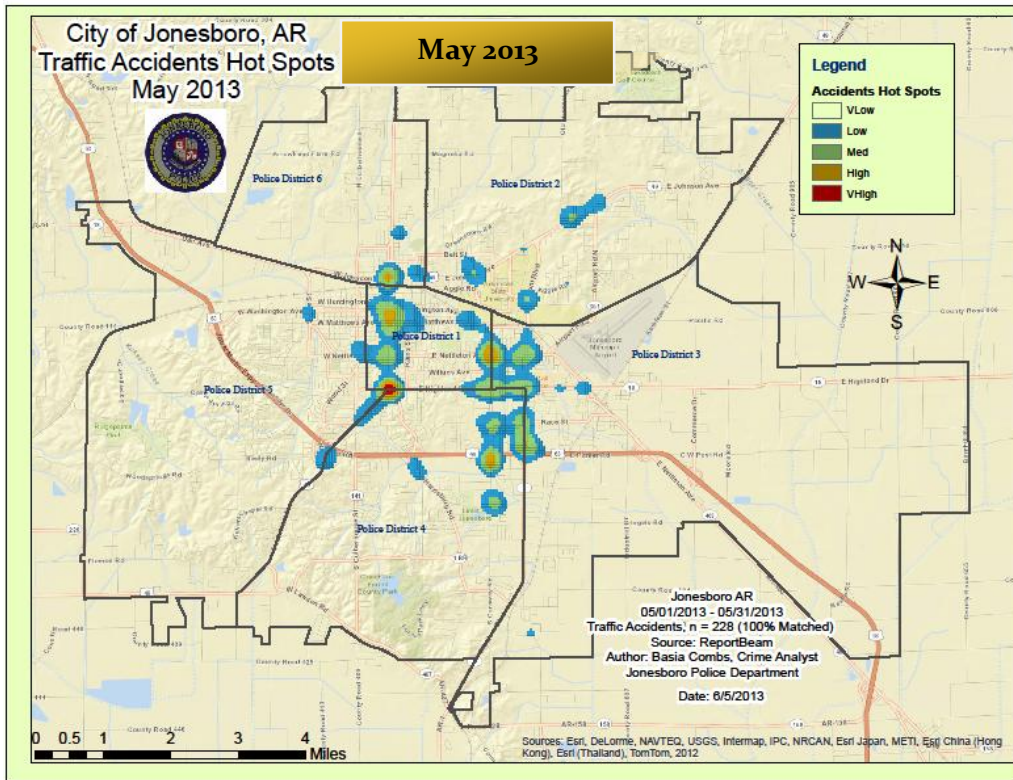
Comprised of three motor units and three Chargers, the Traffic Enforcement Unit responds to traffic accidents and provides increased enforcement in particularly challenging areas. This unit also provides

extra coverage for specific congestion problems and special events in the community. Last, they work details targeting specific issues, such as DWI enforcement and traffic safety checkpoints.

Incidents	This Month	This Month Last Year	YTD	Last YTD	Change By Month	Change YTD
Street Accidents	146	116	694	672	26%	3%
Private Property Accidents	48	29	187	184	66%	2%
Traffic Citations	88	163	471	701	-46%	-33%
DWI	1	5	7	17	-80%	-59%
Mis. Arrests	10	11	33	84	-9%	-61%
Felony Arrests	0	0	4	1	N/C	300%
Drug Arrests	0	0	0	0	N/C	N/C
Public Intoxication Arrests	0	0	0	0	N/C	N/C
Calls For Service	282	248	1124	1213	14%	-7%
Alarms	0	0	0	0	N/C	N/C
Parking Citations	0	0	0	0	N/C	N/C
Written Warnings	146	131	519	554	11%	-6%
TOTALS	721	703	3039	3426	3%	-11%
Value of Asstes Seized	\$0	\$0	\$0	\$0	N/C	N/C
Patrol Miles	6,068	8,108	21,157	31,326	-25%	-32%
Hours Worked	943	799.5	3966	4210.5	18%	-6%

MONTHLY REPORT MAY 2013

11 June 2013



MONTHLY REPORT MAY 2013

11 June 2013

ANIMAL CONTROL

The Animal Control Division is responsible for educating the public on safe and humane issues regarding animal treatment, enforcing all animal laws and ordinances, assisting the

public in resolving animal issues, and protecting the safety and welfare of the citizens and animals in this community.

Incident/Service	This Month	This Month Last Year	YTD	Last YTD	Change By Month	Change YTD
Barking Complaints	8	8	51	46	0%	11%
Bite Reports	12	12	28	45	0%	-38%
Door Hangers	62	33	266	247	88%	8%
Welfare Checks	70	53	244	514	32%	-53%
Advised of Rights	1009	884	4789	4234	14%	13%
Incident Reports	0	11	10	36	-100%	-72%
Gone on Arrival	62	72	243	286	-14%	-15%
Complaints	680	809	3580	3975	-16%	-10%
Desk Complaints	1759	1503	7440	6673	17%	11%
Captured Dogs	210	150	748	759	40%	-1%
Captured Cats	16	10	75	29	60%	159%
Captured Wildlife	47	50	156	123	-6%	27%
Chemical Captures	0	8	4	17	-100%	-76%
Traps	52	78	141	163	-33%	-13%
Deceased Animals	46	100	274	454	-54%	-40%
Assist J.P.D.	4	4	19	23	0%	-17%
Assist C.S.O.	0	1	4	1	-100%	300%
Public Relations	296	502	1644	2305	-41%	-29%
Incident/Service	This Month	This Month Last Year	YTD	Last YTD	Change By Month	Change YTD
CITATIONS ISSUED	79	61	220	299	30%	-26%
WARNINGS ISSUED	This Month	This Month Last Year	YTD	Last YTD	Change By Month	Change YTD
Physical Arrests	102	36	480	214	183%	124%
City Warrants Served	3	2	14	6	50%	133%
County Warrants Served	3	2	33	21	50%	57%
Felony Bench Warrants	1	3	3	10	-67%	-70%
Euthanized	1	0	2	0	N/C	N/C
Euthanized	199	74	479	326	169%	47%
Deceased Animals Landfill lbs.	3580	5160	19460	18036	-31%	8%
Wildlife Euthanized	47	50	156	123	-6%	27%
Sent to Rescue Centers	4	10	23	47	-60%	-51%
Adoptions	23	54	174	235	-57%	-26%
Miles Driven	10,429	7106	44,756	34,574	47%	29%

FLEET MAINTNANCE

The Fleet Maintenance is responsible for all of the police vehicle maintenance upkeep, cleanliness, and purchasing. In addition, this

Division handles most of the purchasing of equipment, supplies, and uniforms for all of the Police Department.

MONTHLY REPORT MAY 2013

11 June 2013

Repair Costs by Model Year	This Month	This Month Last Year	YTD	Last YTD	Change By Month	Change YTD
95-99	\$0.00	\$0.00	\$0.00	\$0.00	N/C	N/C
2000	\$0.00	\$0.00	\$0.00	\$0.00	N/C	N/C
2001	\$0.00	\$0.00	\$0.00	\$300.46	N/C	-100%
2002	\$0.00	\$0.00	\$0.00	\$0.00	N/C	N/C
2003	\$0.00	\$0.00	\$1,205.15	\$0.00	N/C	N/C
2004	\$0.00	\$0.00	\$37.43	\$1,402.82	N/C	-97%
2005	\$0.00	\$113.97	\$0.00	\$712.04	-100%	-100%
2006	\$4,422.20	\$8,535.94	\$18,739.24	\$19,518.73	-48%	-4%
2007	\$3,398.71	\$549.46	\$13,569.84	\$6,588.51	510%	106%
2008	\$551.17	\$11.61	\$2,796.04	\$1,923.02	4647%	45%
2009	\$390.50	\$490.48	\$1,758.36	\$930.86	N/C	N/C
2010	\$0.00	\$0.00	\$442.57	\$489.28	N/C	N/C
2011	\$279.11	\$156.09	\$1,387.70	\$757.32	N/C	N/C
2012	\$0.00	\$0.00	\$0.00	\$0.00	N/C	N/C
2013	\$0.00	n/a	\$0.00	n/a	N/C	N/C
Totals	\$9,041.69	\$9,857.55	\$39,936.33	\$32,623.04	-8%	22%

Routine Preventative Maintenance by Model Year	This Month	This Month Last Year	YTD	Last YTD	Change By Month	Change YTD
95-99	\$0.00	\$0.00	\$174.13	\$72.00	N/C	142%
2000	\$0.00	\$0.00	\$20.00	\$20.00	N/C	0%
2001	\$0.00	\$0.00	\$186.59	\$0.00	N/C	N/C
2002	\$20.00	\$0.00	\$20.00	\$100.46	N/C	-80%
2003	\$0.00	\$0.00	\$327.59	\$172.00	N/C	90%
2004	\$24.50	\$40.00	\$570.39	\$198.00	-39%	188%
2005	\$29.00	\$40.00	\$1,370.32	\$445.35	-28%	208%
2006	\$994.49	\$534.50	\$7,388.14	\$7,850.63	86%	-6%
2007	\$417.76	\$610.49	\$5,592.66	\$5,332.49	-32%	5%
2008	\$774.80	\$392.82	\$2,867.25	\$2,075.31	97%	38%
2009	\$633.49	\$1,069.22	\$3,173.45	\$3,951.62	N/C	N/C
2010	\$40.00	\$506.18	\$563.89	\$1,515.96	N/C	N/C
2011	\$1,509.35	\$264.00	\$6,644.69	\$820.50	N/C	N/C
2012	\$55.00	\$0.00	\$408.42	\$352.81	N/C	N/C
2013	\$207.56	n/a	\$939.93		N/C	N/C
Totals	\$4,795.95	\$3,457.21	\$30,247.45	\$22,907.13	36%	32%

RECORDS

The Records Division is responsible for providing administrative and clerical support to the department. Major responsibilities include entering the accident and incident reports and tickets into the records database management system, assisting the general

public for report requests, performing criminal backgrounds, serving as a switchboard at times, performing validations, and setting up and managing the payment plans out of court.

RECORDS	This Month	This Month Last Year	YTD	Last YTD	Change By Month	Change YTD
Incident/Arrest Reports Processed	1342	1292	6141	6410	4%	-4%
Accident Reports Processed	229	182	5028	5300	26%	-5%
Citations Processed	3559	4557	4378	5384	-22%	-19%
Warnings Processed	898	993	14157	18133	-10%	-22%
Backgrounds	13	9	3622	3290	44%	10%
Photos	0	108	75	164	-100%	-54%
Accident Requests	105	106	744	621	-1%	20%
Accident Requests Online	134	101	137	101	33%	36%
TOTALS	6,280	7,348	34,282	39,403	-15%	-13%

MONTHLY REPORT MAY 2013

11 June 2013

PROFESSIONAL STANDARDS

The Office of Professional Standards, a unit within Administration, is charged with the compilation and updating of an extensive set of policies and procedures and providing a general operations guideline and code of conduct for officers to follow. In the event

that a member of the public does experience a negative interaction with an officer, mechanisms are in place for them to lodge a complaint. All complaints are reviewed and investigations completed in a timely manner.

Professional Standards	This Month	This Month Last Year	YTD	Last YTD	Change By Month	Change YTD
Opened (TOTAL)	4	6	15	35	-33%	-57%
Closed	4	6	14	33	-33%	-58%
Inquiries	4	6	12	27	-33%	-56%
Formal Investigations	0	0	3	3	N/C	0%
Sustained	2	5	9	28	-60%	-68%
Not-Sustained	0	0	0	0	N/C	N/C
Exonerated	1	0	3	1	N/C	200%
Unfounded	1	1	5	6	0%	-17%

END OF REPORT



Contact Information

Basia Combs, MPA, CCIA | Crime Analyst | Office of Crime Analysis & Criminal Intelligence
Jonesboro Police Department | 410 W Washington Ave | Jonesboro, AR 72401
Ph: 870-336-7196 | E-mail: bcombs@jonesboro.org | www.jonesboropolice.com
