

JONESBORO POLICE DEPARTMENT

Monthly Report

October 2013

IN THIS REPORT

CRIME ANALYSIS	1
Total Crime	2
Crimes against Person	3
Property Crimes	4
Crimes of Proactive Policing	5
Other Crimes.....	6
Arrests Demographics	7
EMERGENCY 911	9
UPD	10
PROWL	10
CID	11
WARRANTS	12
DRUG TASK FORCE	12
TRAFFIC	13
Maps	14
ANIMAL CONTROL	15
FLEET MAINTENANCE	16
RECORDS	17
PROFESSIONAL	
STANDARDS	17

The purpose of the Jonesboro Police Department Monthly Report is to compile data into one integrated report for review, allowing for a seamless flow of information for better decision-making. After each department collates their monthly numbers and sends it to the Office of Crime Analysis, it is organized into sections of departmental data, analyzed and packaged, and finally disseminated to department heads, the Chief of Police, the City Mayor, and the City Council. Major sections include Crime Analysis, Emergency 911, Uniform Police Division, Prowl, Criminal Investigative Division, Warrants, Drug Task Force, Traffic, Parking Enforcement, Animal Control, Fleet Maintenance, Records, and Professional Standards.

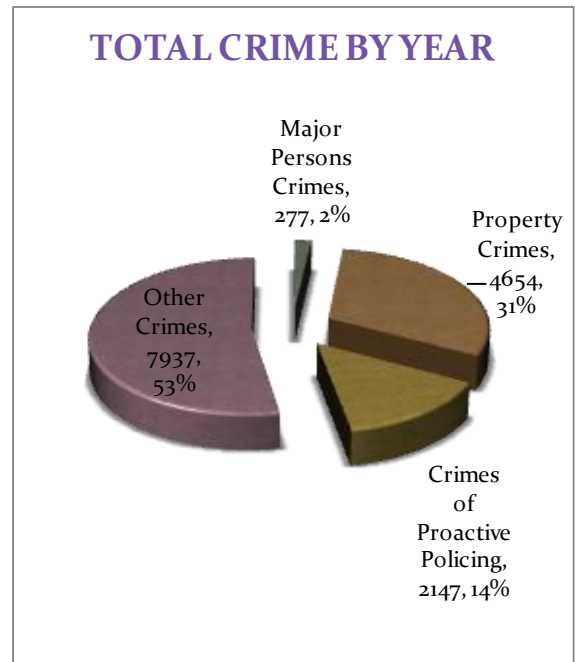
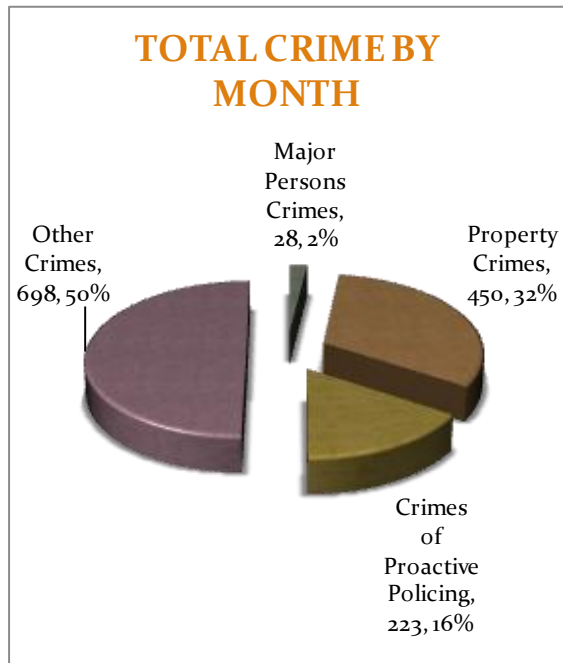
CRIME ANALYSIS

The Crime Analysis division consists of one Crime Analyst and one part-time Crime Analyst Assistant. The Crime Analyst position is responsible for the analysis and dissemination of crime activity data and the collection and maintenance of crime intelligence information for the city of Jonesboro. Additionally, the Crime Analyst is charged with providing the department with current and accurate crime maps, presenting crime activity data to audiences of interest, and with responding to requests for crime data from civilians and departmental staff. Data exported from this division is used by field agents for more effective, efficient policing, administration for improved staffing decisions, and the Mayor's office for community decision making and enhanced public relations. The following section is broken down into Total Crime, Crimes against Persons, Property Crimes, Crimes of Proactive Policing, Other Crimes, Arrest Demographics, and Total Crime Monthly Comparison.

TOTAL CRIME

The crime activity for the month of October 2013 was at a total of 1,399 NIBRIS reportable offenses, a -13% decrease, comparing to the total of offenses reported in October of the last year. With Jonesboro population estimated to be equal to 69,856, the crime rate in October of this year was at 20 crimes per 1,000 population, comparing to 23 crimes per 1,000 population last year¹, a -15% decrease. As indicated on a pie chart below, Other Crimes absorb the majority, 50%, of this month's crime activity (n = 698). Property Crimes fall into a second place and comprise of 32% of all the crimes (n = 450). Following in third and fourth places are, respectively, Crimes of Proactive Policing, comprising of 16% (n = 223) of all the crimes, and Crimes against Persons, comprising of 2% (n = 28) of all the crimes this month.

Year to date data includes number of crimes from January through October 2013. A total of 15,015 NIBRIS reportable offenses were reported in 2013, a -5% decrease, comparing to the same period last year. The year to date crime rate amounts to 215 offenses per 1,000 population, compared to 230 offenses per 1,000 population last year (down 6%). To date this year, 53% of all the crimes is attributed to Other Crimes category (n = 7,937). Property Crimes amount to 31% of all the crimes (n = 4,654), Crimes of Proactive Policing comprise of 14% of all the crimes to date, where n = 2,147; Crimes against Persons comprise of 2% of a total year to date number of crimes (n = 277).

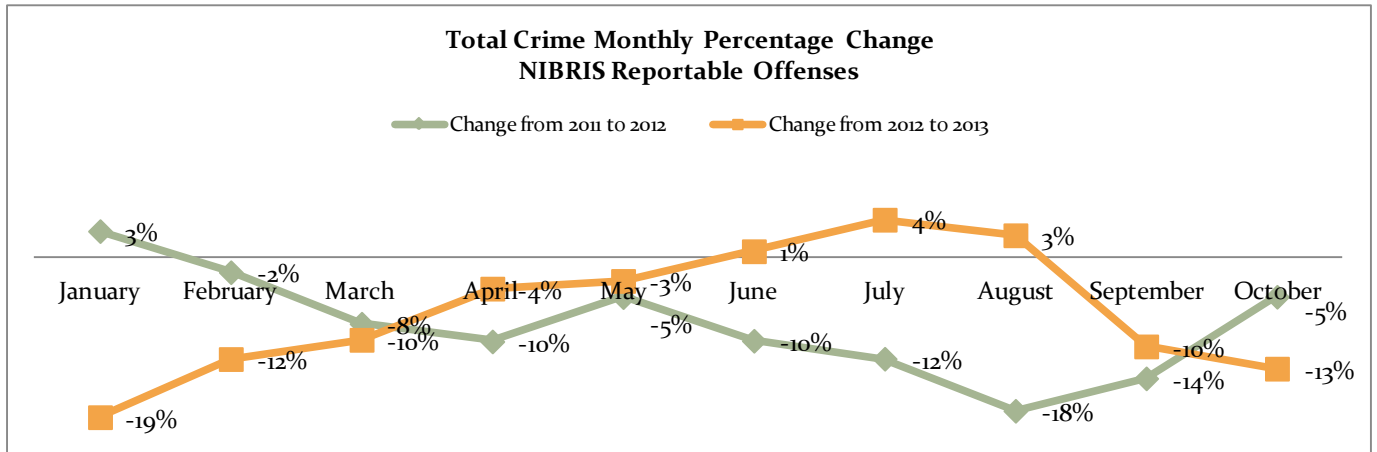
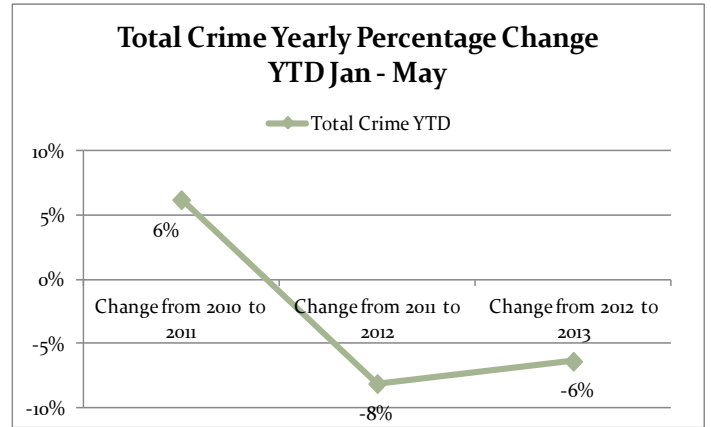
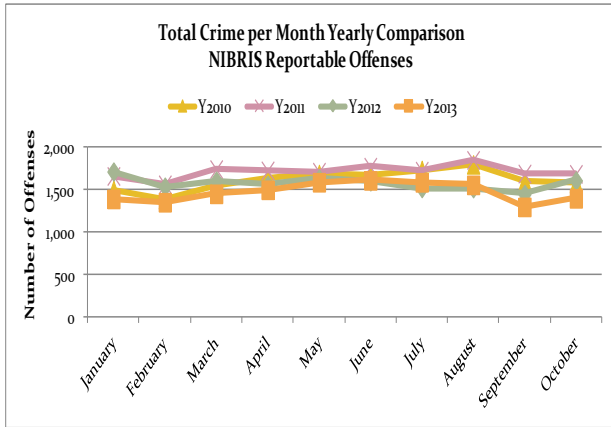


The line charts below depict frequencies of crime and a monthly and yearly percentage change from the last year.

¹ Note: Population numbers are based on 2011 & 2012 population estimate, where 2011 population estimate is 68,547.

MONTHLY REPORT OCTOBER 2013

12 November 2013



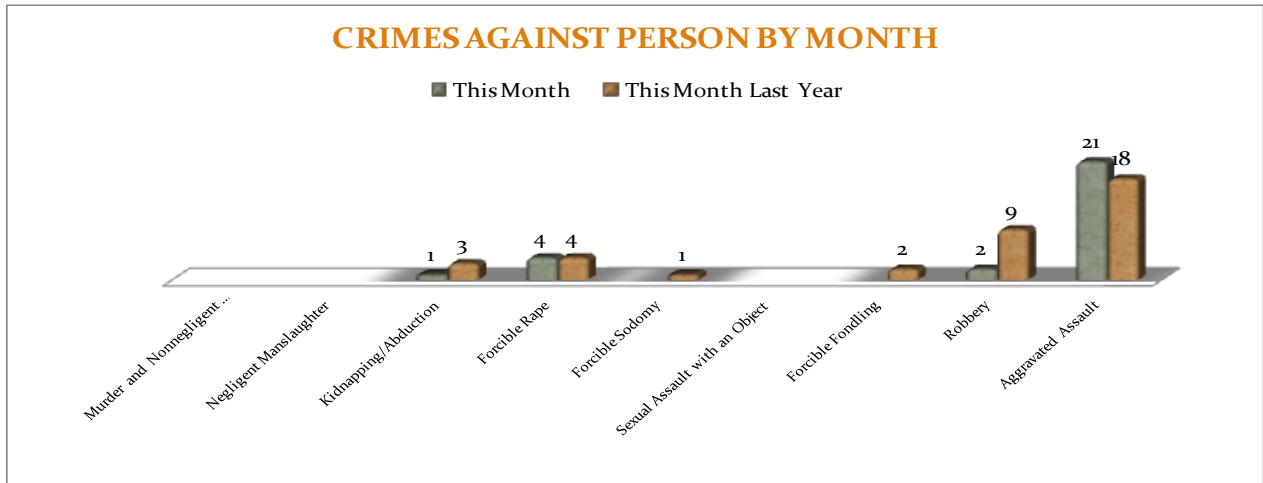
CRIMES AGAINST PERSONS

There are 9 crimes that make up this section. There were a total of 28 offenses in this area in October this year, a 24% decrease comparing to October of the last year. There

were 7 less Robberies reported this month. As demonstrated on the bar chart below, there are no other significant changes in frequencies for the crimes in this category.

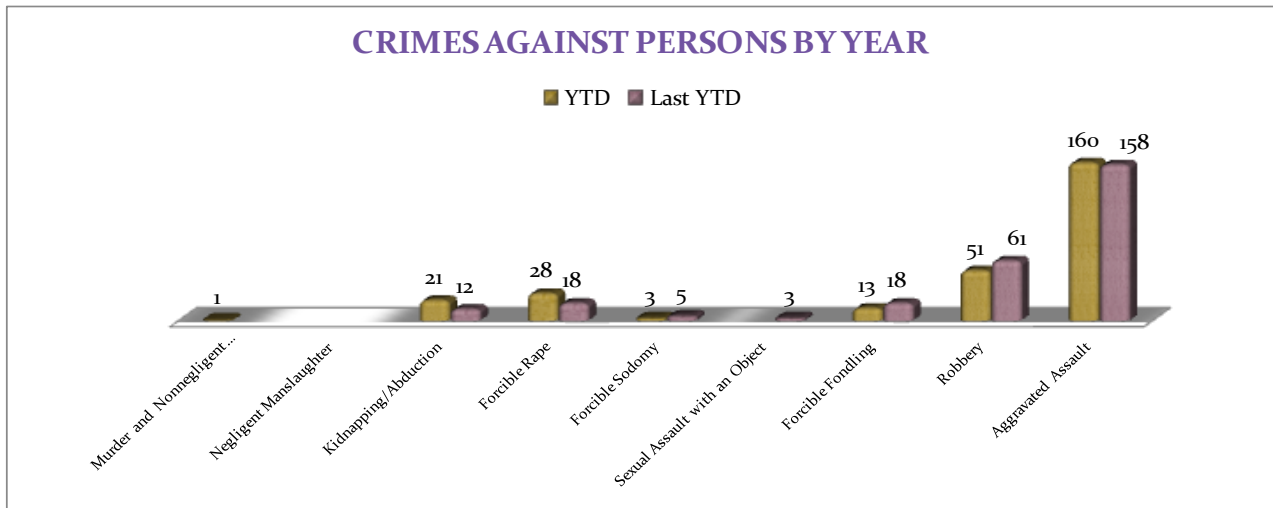
MONTHLY REPORT OCTOBER 2013

12 November 2013



A bar graph below shows the year to date data for Crimes against Persons, which amounts to a total of 277 incidents for this category of crimes, which is up 1%, comparing to the year to date data of last year. There were 9 more

Kidnapping/Abductions and 10 more Forcible Rapes reported this year so far, comparing with last year's data. There are no other significant changes in frequencies for the crimes in this category.



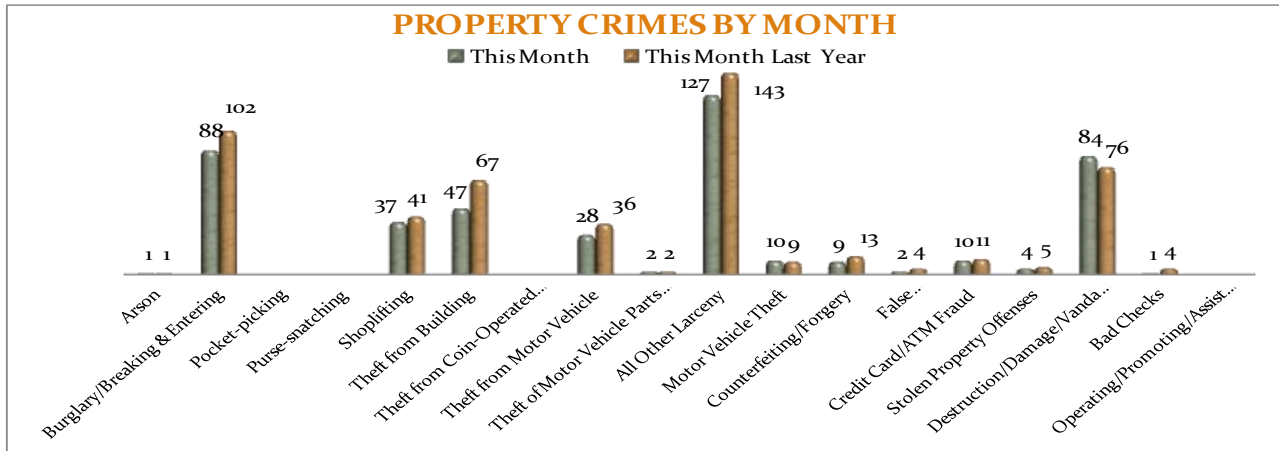
PROPERTY CRIMES

This section displays the criminal activity for 18 crimes, all against property. This month, there were a total of 450 Property Crimes, a 12% decrease comparing to October of the last year. The data indicates change in Shoplifting (down 36%), Counterfeiting /

Forgery is down 63%, Burglary/Breaking & Entering is down 14%, Theft from Building is down 30%, and All Other Larceny is down 11%, while compared to October of last year. No other significant changes are noted this month for this crime category.

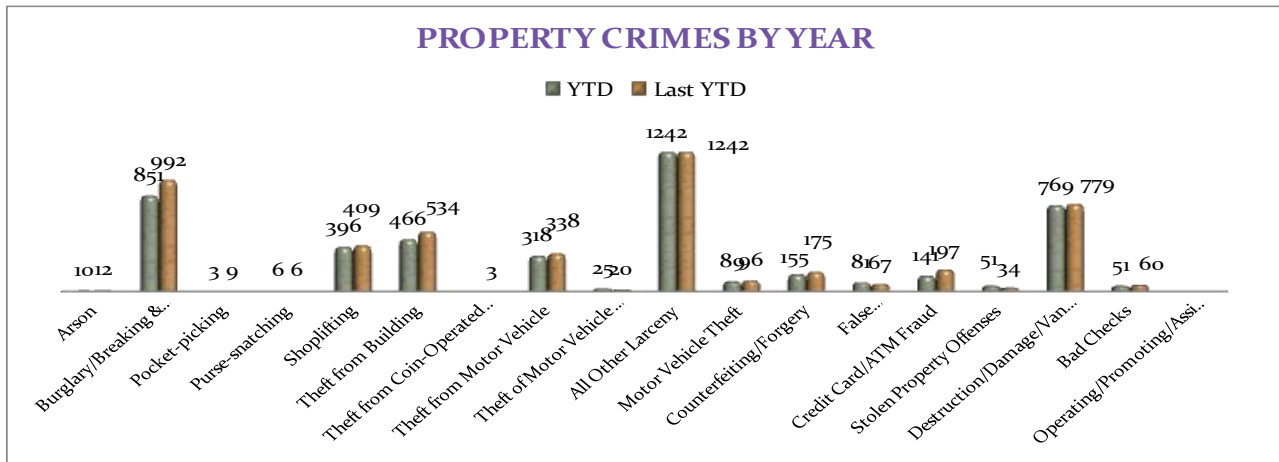
MONTHLY REPORT OCTOBER 2013

12 November 2013



To date this year, 4,654 property offenses have occurred, a 6% decrease, comparing to the last year's data at this same time. The following significant changes are noted this year: Credit Card/ATM Fraud is down -28%; Burglary/Breaking & Entering is down -14%, Theft from Building is down -13%, Theft from

Motor Vehicle is down -6%, and Counterfeiting/Forgery is down -11%, while Stolen Property Offenses are up +50% and so is False Pretenses/Swindle/Confidence Game, up +21%. There are no other statistically significant changes noted for other offenses in this category.



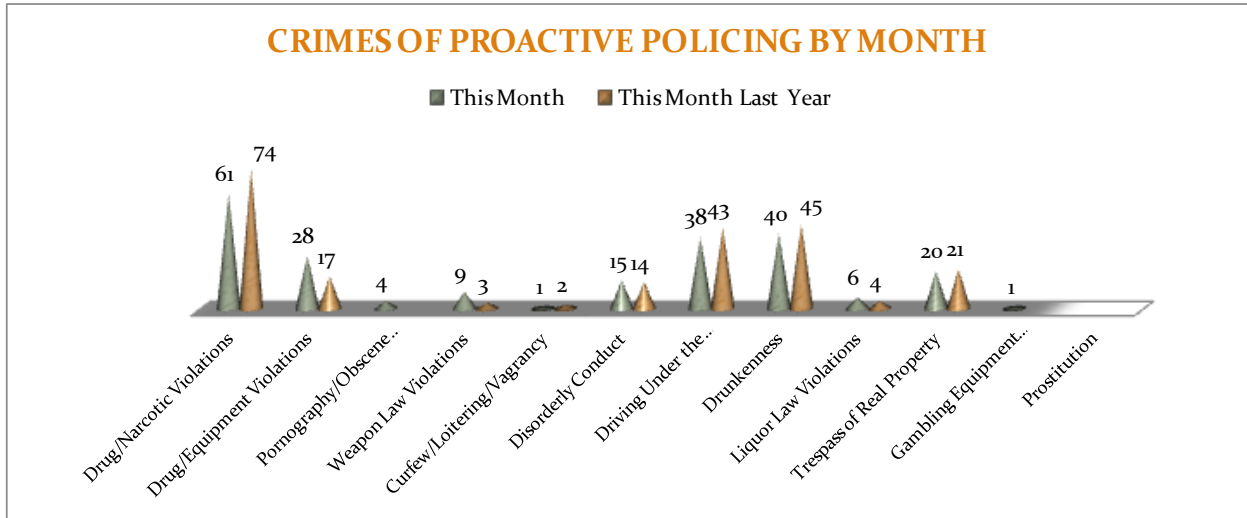
CRIMES OF PROACTIVE POLICING

Crimes of Proactive Policing are those crimes that result from police officers actively policing the streets to combat certain types of street crime. As a chart below indicates, twelve crimes fall under this category. A total of 223 offenses have been reported this

month, no change, comparing to October of the last year. Drug Equipment Violations are up 65%. There are no other statistically significant changes noted for other offenses in this category.

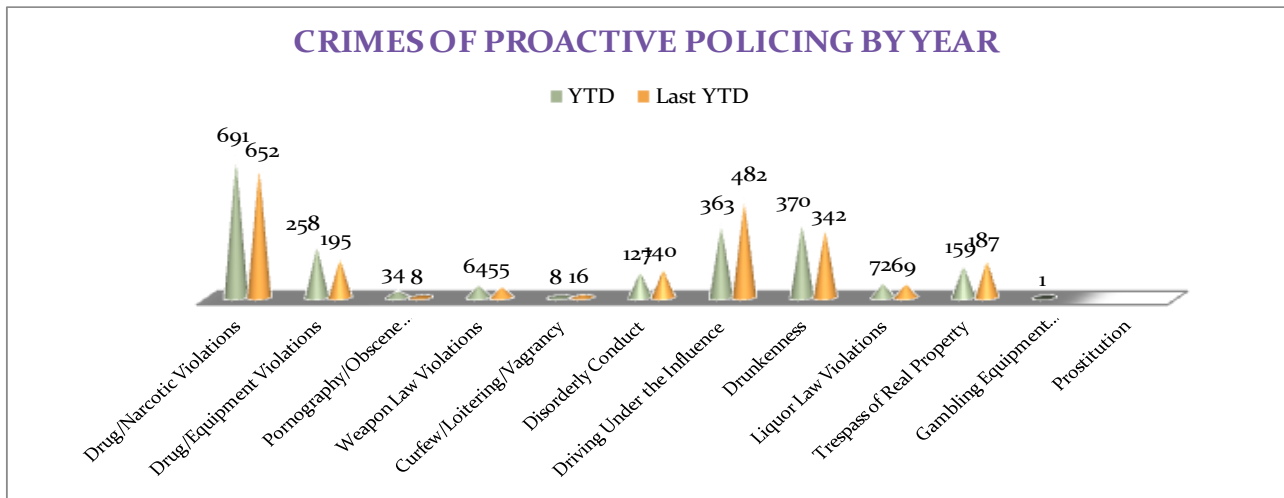
MONTHLY REPORT OCTOBER 2013

12 November 2013



To date for the year 2013, there have been 2,147 crimes of proactive policing reported, no overall change when comparing to the last year's to date data. As for individual offenses, however, the following changes are noted: Drug/Narcotic Violations are up 6%, Drug/Equipment Violations are up 62%,

Disorderly Conduct is down 13%, and Drunkenness is up 8%, while Trespass of Real Property is down 15%. Pornography /Obscene Material offenses are up 325% (26 more offenses). There are no other statistically significant changes noted for other offenses in this category.



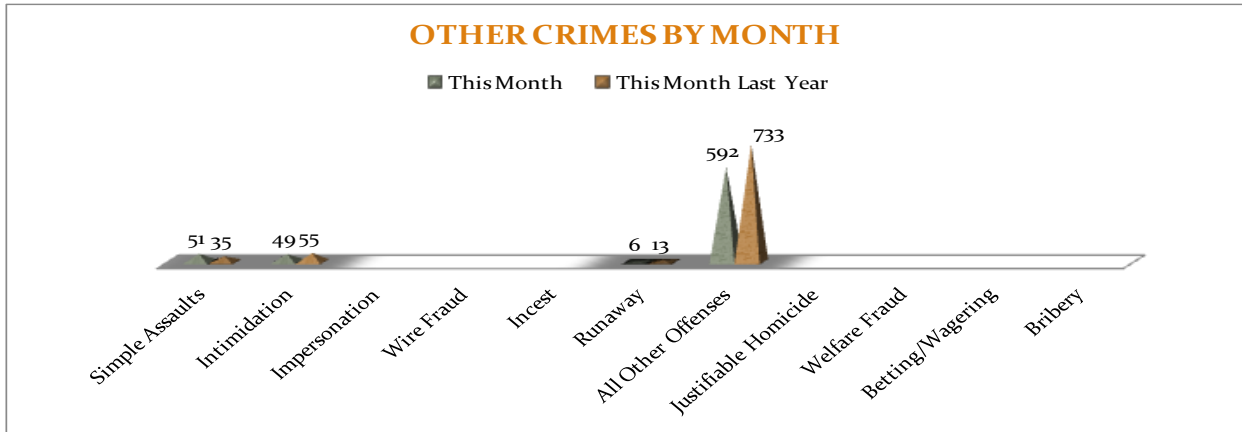
MONTHLY REPORT OCTOBER 2013

12 November 2013

OTHER CRIMES

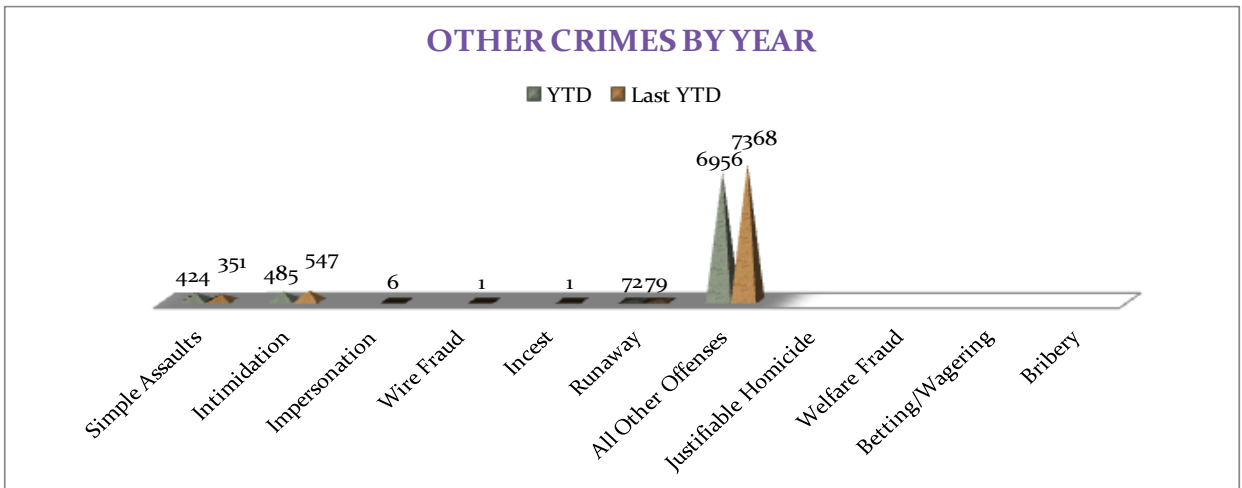
There are 11 crimes that fall into the Other Crimes category. This month, there have been a total of 698 Other Crimes reported, a 17% decrease, comparing to October of the

last year. Simple Assaults increased by 46%. All Other Offenses decreased by 19%. No other significant changes are noted in this category of crimes this month.



To date this year, there have been 7,937 Other Crimes offenses reported, a 5% decrease comparing to the last year's to date data. Assaults increased by 21%, Intimidation is down -11%, and All Other Offenses

decreased by -6%. No other significant changes have been observed for other offenses within this category, comparing to the last year's data.

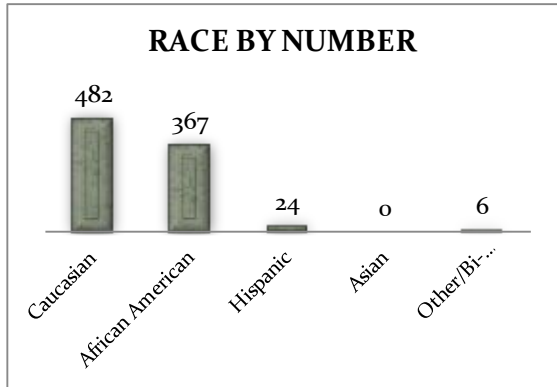
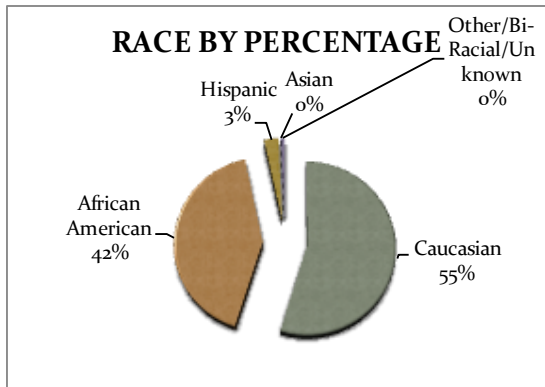
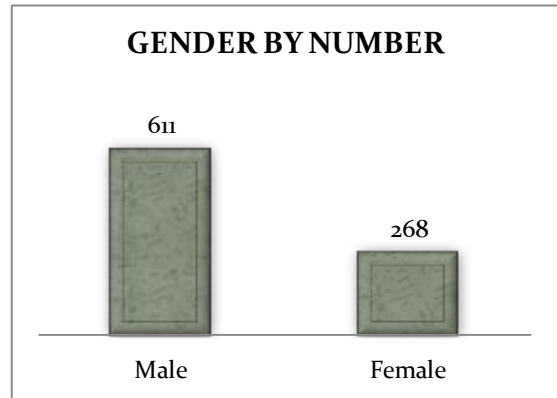
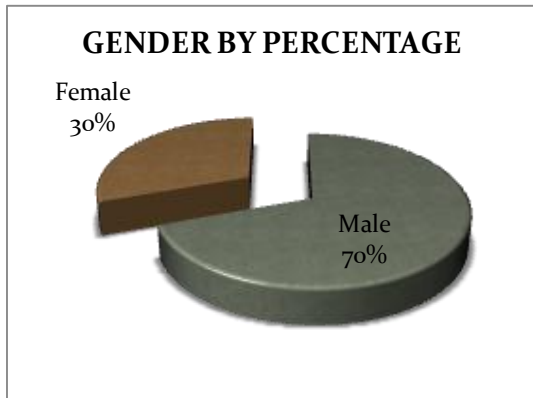


12 November 2013

ARREST DEMOGRAPHICS

In October 2013, there were a total of 879 arrests carried out by the Jonesboro Police Department, comparing with the last year's data for the month of October, up 1%. However, the rate of arrests per offense increased 16% this month, comparing to the rate from the previous year. This section breaks down this month's arrests by race and gender. The majority of arrestees, 70%, have

been male ($n = 611$), as opposed to 30% of female arrestees ($n = 268$). As for the racial/ethnic composition, the majority of arrestees have been Caucasian (55%) and African American (42%), as opposed to Hispanic (3%), Asian (0%), or other/unknown/bi-racial (0%).

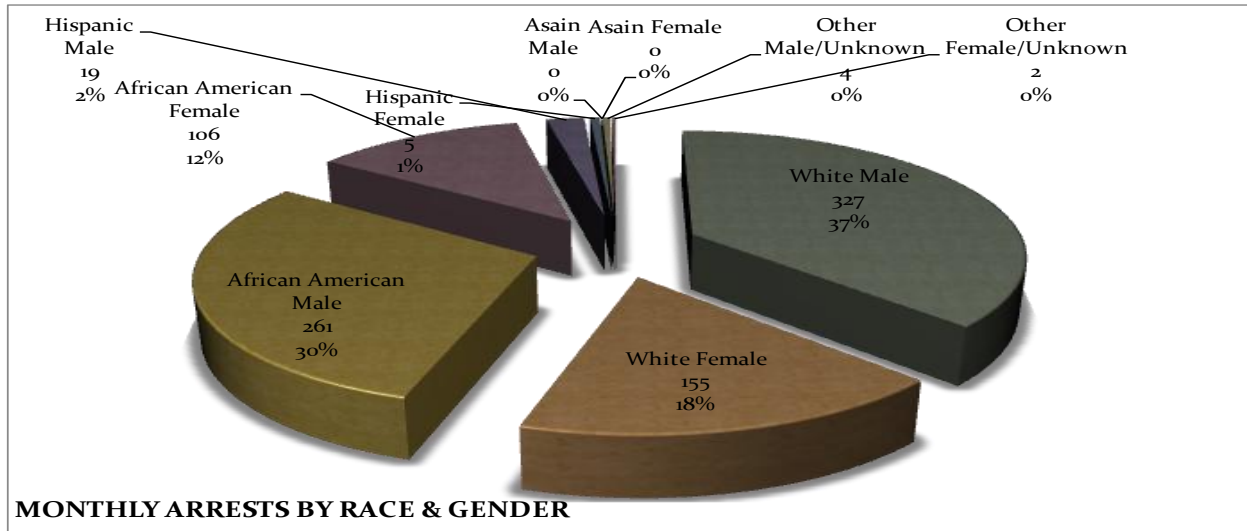


Caucasian males make up the majority, 37%, of arrestees this month ($n = 327$). African American males make up 30% of arrestees for the month of October ($n = 261$). Caucasian females make up 18% ($n = 155$) and African American females make up 12% ($n = 106$) of arrestees this month. Hispanic males

make up 2% ($n = 19$), while Hispanic Females make up 1% of arestees this month ($n = 5$). There were 4 Males and 2 Females of unknown race or ethnicity arested in October.

MONTHLY REPORT OCTOBER 2013

12 November 2013



EMERGENCY 911

Also known as Public Safety Answering Point (PSAP), the Emergency 911 Division is responsible for answering all calls from public for emergency assistance, accessing the needed information to best assist, and then assigning the most efficient and effective emergency response. In addition,

this division is responsible for setting priority call dispatching to field units including Police, Fire, and EMS. Emergency 911 also maintains all records for radio logs, calls for service, and other emergency service data collections.

Calls by Type	This Month	This Month Last Year	YTD	Last YTD	Change By Month	Change YTD
Land Line E911	804	713	7,958	7,787	13%	2%
Cell Phone E911	4,469	3,859	43,810	41,903	16%	5%
Admin Lines-non emer	14,313	15,281	145,816	167,995	-6%	-13%
TOTALS	19,586	19,853	197,584	217,685	-1%	-9%
Calls by Agency	This Month	This Month Last Year	YTD	Last YTD	Change By Month	Change YTD
Jonesboro PD Calls	7,174	7,235	68,680	69,960	-1%	-2%
Craighead Cty Sheriff	1,453	1,166	13,363	12,642	25%	6%
Jonesboro Fire Dpt - dispatch	206	238	1,966	2,202	-13%	-11%
Jonesboro Fire Dpt - Med Asst	142	135	1,393	1,209	5%	15%
Craighead Cty - Fire	34	41	410	670	-17%	-39%
Craighead Cty - 1st Responder	122	115	1,053	1,106	6%	-5%
Emerson Ambulance	322	325	2,850	3,050	-1%	-7%
Medic One	321	328	3,174	2,938	-2%	8%
Air Evac	2	2	5	9	0%	-44%
Coroner	0	1	31	30	-100%	3%
ARK State Police	10	18	98	131	-44%	-25%
Jonesboro Animal Control	12	4	37	22	200%	68%
Wreckers Called	235	194	1,791	1,717	21%	4%
TOTALS	10,033	9,802	94,851	95,686	2%	-1%

MONTHLY REPORT OCTOBER 2013

12 November 2013

Calls by Municipality	This Month	This Month Last Year	YTD	Last YTD	Change By Month	Change YTD
Bay PD	114	161	1279	1235	-29%	4%
Bono PD	249	238	2762	2690	5%	3%
Brookland PD	180	206	1527	1722	-13%	-11%
Caraway PD	75	68	718	1302	10%	-45%
Cash PD	134	14	774	196	857%	295%
Egypt PD	10	8	144	73	25%	97%
Lake City PD	121	105	1307	1407	15%	-7%
Monette PD	132	126	1345	2538	5%	-47%
TOTALS	1,015	926	9,856	11,163	10%	-12%

UNIFORM PATROL DIVISION

The UPD is responsible for responding to calls into the Emergency – 911 Division by civilians and are normally the first responders. Jonesboro is divided into 6 patrol districts. Officers from UPD are

assigned to a district and work the same district every shift. In addition, when a Traffic Officer is not available, a UPD Officer will respond to traffic accidents and assist in directing traffic when necessary.

Incidents	This Month	This Month Last Year	YTD	Last YTD	Change By Month	Change YTD
Calls for Service	7,174	7,235	77,769	70,594	-1%	10%
Complaints / Calls	4,879	4,189	46,447	40,641	16%	14%
Assists	636	1,158	12,208	12,193	-45%	0%
Incident Reports	1,831	913	10,749	8,613	101%	25%
Street Accidents	48	102	818	807	-53%	1%
Private Property Accidents	18	46	414	407	-61%	2%
Traffic Stops	2,295	2,047	23,255	20,247	12%	15%
Traffic Citations	437	710	6,992	6,552	-38%	-7%
Written Warnings	702	945	9524	8,745	-26%	9%
DWI	28	36	397	401	-22%	-1%
Mis. Arrests	335	449	5,024	4,585	-25%	10%
Felony Arrests	87	82	1,041	915	6%	14%
Warrants Served	691	1,318	13,371	13,248	-48%	1%
Alarms	336	362	3,751	3,475	-7%	8%
TOTALS	19,497	19,592	211,760	191,423	0%	11%
Hours Worked	6,664	9,575	93,896	90,017	-30%	4%

PROWL

The Prowl unit is a uniformed street crimes unit specializing in criminal patrol, narcotics enforcement, gang investigation, and prostitution activity. The unit conducts directed patrols, investigates citizen

complaints of street-level criminal activity, and directly assists the 2nd Judicial Drug Task Force. PROWL also assists any division within the Jonesboro Police Department at any time when needed.

MONTHLY REPORT OCTOBER 2013

12 November 2013

Incidents	This Month	This Month Last Year	YTD	Last YTD	Change By Month	Change YTD
Street Accidents	0	0	0	0	N/C	N/C
Private Property Accidents	0	0	2	1	N/C	100%
Traffic Citations	26	22	237	322	18%	-26%
DWI	0	0	0	1	N/C	-100%
Mis. Arrests	134	301	1,170	2,013	-55%	-42%
Felony Arrests	33	30	280	298	10%	-6%
Drug Arrests	27	20	278	274	35%	1%
Public Intoxication Arrests	0	0	0	1	N/C	-100%
Calls For Service	58	110	740	1,030	-47%	-28%
Alarms	0	0	0	0	N/C	N/C
Parking Citations	0	0	0	0	N/C	N/C
Written Warnings	46	43	671	561	7%	20%
Assists	0	0	0	0	N/C	N/C
TOTALS	324	526	3,378	4,501	-38%	-25%
Value of Drugs Seized	\$ 4,250.00	\$ 5,350.00	\$ 98,430.00	\$ 198,185.00	-21%	-50%
Value of Asstes Seized	\$ 824.00	\$ -	\$ 34,277.00	\$ 33,818.00	N/C	1%
Patrol Miles	7,400	4,600	75,900	60,350	61%	26%

CRIMINAL INVESTIGATIVE DIVISION

The CID is responsible for conducting follow-up investigations into criminal acts reported to the Jonesboro Police Department. The primary goal is to collect and present evidence that conclusively leads

to a successful arrest. Additionally, CID is charged with clearing additional crimes, recovering stolen property, preventing additional crimes, and gathering intelligence information.

Investigations	This Month	This Month Last Year	YTD	Last YTD	Change By Month	Change YTD
Criminal Investigations Assigned	152	68	1229	685	124%	79%
Criminal Investigations Closed	120	78	877	542	54%	62%
Cleared by Arrests	65	47	525	375	38%	40%
Unfounded	22	13	112	61	69%	84%
Exceptionally Cleared	17	8	136	45	113%	202%
Filed With Prosecutors Office	12	7	70	45	71%	56%
Crimes Against Persons	This Month	This Month Last Year	YTD	Last YTD	Change By Month	Change YTD
Criminal Investigations Closed	37	16	280	175	131%	60%
Cleared by Arrests	16	11	178	134	45%	33%
Unfounded	11	3	43	14	267%	207%
Exceptionally Cleared	8	2	39	11	300%	255%
Filed With Prosecutors Office	2	0	20	16	N/C	25%
Property Crimes	This Month	This Month Last Year	YTD	Last YTD	Change By Month	Change YTD
Criminal Investigations Assigned	96	50	797	472	92%	69%
Criminal Investigations Closed	71	55	494	323	29%	53%
Unfounded	8	8	55	38	0%	45%
Exceptionally Cleared	9	6	88	33	50%	167%
Filed With Prosecutors Office	8	6	32	20	33%	60%
Crimes Against Children	This Month	This Month Last Year	YTD	Last YTD	Change By Month	Change YTD
Criminal Investigations Assigned	20	3	96	18	567%	433%
Criminal Investigations Closed	8	7	69	31	14%	123%
Cleared by Arrests	3	1	28	11	200%	155%
Unfounded	3	2	15	9	50%	67%

MONTHLY REPORT OCTOBER 2013

12 November 2013

Filed With Prosecutors Office	2	1	18	10	100%	80%
Miscellaneous Investigations Assigned	2	2	14	10	0%	40%
Miscellaneous Investigations Cleared	4	3	27	22	33%	23%
FINGERPRINTS	This Month	This Month Last Year	YTD	Last YTD	Change By Month	Change YTD
Rolled for the Public	140	71			97%	n/a

WARRANTS

The Warrants Division is responsible for serving warrants, criminal summonses, and subpoenas that are issued by the District Court. On city court days, the Warrants Division provides a bailiff for court and a transport officer. In addition, this Division is

responsible for transporting wanted persons arrested in other jurisdictions back to Jonesboro. The STEP program operates within this division and is a grant-funded operation in which officers can get paid overtime to enforce the safety belt law.

Arrests	This Month	This Month Last Year	YTD	Last YTD	Change By Month	Change YTD
Misdemeanor	4	1111	4844	11344	-100%	-57%
Felony	1	0	4	4	N/C	0%
Total Arrests	5	1111	4848	11348	-100%	-57%
Warrants by Activity	This Month	This Month Last Year	YTD	Last YTD	Change By Month	Change YTD
Subpoenas	515	513	5257	4812	0%	9%
Commitments	7	0	53	21	N/C	152%
Traffic Citations	3	2	12	21	50%	-43%
Complaints	4	0	40	12	N/C	233%
Assist	0	0	3	1	N/C	200%
Alarms	0	0	0	0	N/C	N/C
Hours by Activity	This Month	This Month Last Year	YTD	Last YTD	Change By Month	Change YTD
SI Criminal	210.5	244.5	1816.15	2414	-14%	-25%
Court	120.5	138.5	1057.67	1311.17	-13%	-19%
Prisoner Transport	53.5	27.5	373.17	296	95%	26%
Hours Worked	This Month	This Month Last Year	YTD	Last YTD	Change By Month	Change YTD
Regular Hours Worked	682.5	649	5531	8313	5%	-33%
Overtime Hours Worked	9	4	65.3	61	125%	7%
TOTAL Hours Worked	691.5	653	5596.3	8374	6%	-33%
Mileage	This Month	This Month Last Year	YTD	Last YTD	Change By Month	Change YTD
Total Mileage	3774	2435	30748	23942	55%	28%
STEP	This Month	This Month Last Year	YTD	Last YTD	Change By Month	Change YTD
DWI Arrest	3	0	3	8	N/C	-63%
DUI Arrest	0	0	0	0	N/C	N/C
Traffic Citations	79	194	204	1865	-59%	-89%
Felony Arrests	0	1	1	7	-100%	-86%
Drug Arrests	1	1	1	2	0%	-50%
STEP TOTALS	83	196	209	1882	-58%	-89%
STEP Hours Worked	177	38	312	1124.5	366%	-72%
STEP Miles Driven	543	618	1319	6218.5	-12%	-79%

DRUG TASK FORCE

The DTF is responsible for investigating major drug traffickers in the area, including all types of illegal drugs.

The DTF works closely with local, state, and federal agencies to eradicate drugs from the community.

MONTHLY REPORT OCTOBER 2013

12 November 2013

INVESTIGATIONS	This Month	This Month Last Year	YTD	Last YTD	Change By Month	Change YTD
Opened	20	35	208	255	-43%	-18%
Closed	17	24	146	191	-29%	-24%
TOTAL	37	59	354	446	-37%	-21%
With Nexus to Jonesboro	This Month	This Month Last Year	YTD	Last YTD	Change By Month	Change YTD
Opened	20	22	175	225	-9%	-22%
Closed	0	0	0	0	N/C	N/C
TOTAL	20	22	175	225	-9%	-22%
Outside Jonesboro (No Known Nexus)	This Month	This Month Last Year	YTD	Last YTD	Change By Month	Change YTD
Opened	0	0	6	11	1300%	-45%
Closed	0	0	0	0	0%	N/C
TOTAL	0	0	6	11	N/C	-45%
ASSISTANCE RENDERED	This Month	This Month Last Year	YTD	Last YTD	Change By Month	Change YTD
Assist to Outside Agencies	1	0	1	64	N/C	-98%
Assist to Jonesboro UPD/CID	6	10	75	110	-40%	-32%
ARRESTS	This Month	This Month Last Year	YTD	Last YTD	Change By Month	Change YTD
Miscellaneous	5	3	61	59	67%	3%
Felony	32	31	261	286	3%	-9%
Marijuana	4	3	54	37	33%	46%
Cocaine	0	2	9	15	-100%	-40%
Crack Cocaine	0	4	8	26	-100%	-69%
Methamphetamine/ICE	9	23	96	86	-61%	12%
LSD	0	0	0	0	N/C	N/C
Extasy (MDMA or Other Designer Drug)	0	0	3	0	N/C	N/C
Prescription	2	3	31	24	-33%	29%
Opiates (Heroin, Opium)	0	1	0	2	-100%	-100%
Labs	1	0	4	7	N/C	-43%
All Other Drug Offenses	8	4	78	36	100%	117%
ASSET FORFEITURE	This Month	This Month Last Year	YTD	Last YTD	Change By Month	Change YTD
Vehicles Seized (No.)	0	1	2	5	-100%	-60%
Value of Assets Seized(Includes Value of vehicles)	\$ 8,241.00	\$ 11,000.00	\$ 14,941.00	\$ 121,316.00	-25%	-88%
Asset Value Awarded to Jonesboro PD (State)	\$ -	\$ -	\$ -	\$ -	N/C	N/C
Asset Value Awarded to Jonesboro PD (Federal)	\$ -	\$ -	\$ -	\$ -	N/C	N/C
Asset Value Awarded to Jonesboro PD (Total)	\$ -	\$ -	\$ -	\$ -	N/C	N/C
ARRESTS DEMOGRAPHICS	This Month	This Month Last Year	YTD	Last YTD	Change By Month	Change YTD
White	8	17	134	123	-53%	9%
African American	7	14	55	80	-50%	-31%
Latino	1	0	5	47	N/C	-89%
Asian	0	0	0	0	N/C	N/C
Other/Bi-Racial	0	0	0	0	N/C	N/C
Male	10	25	130	175	-60%	-26%
Female	6	6	55	63	0%	-13%
White Male	4	10	81	74	-60%	9%
White Female	4	6	45	46	-33%	-2%
African American Male	5	15	46	68	-67%	-32%
African American Female	2	0	9	12	N/C	-25%
Latino Male	1	0	4	33	N/C	-88%
Latino Female	0	0	0	2	N/C	-100%
Asian Male	0	0	0	0	N/C	N/C
Asian Female	0	0	0	0	N/C	N/C
Other/Bi-Racial Male	0	0	0	0	N/C	N/C
Other/Bi-Racial Female	0	0	0	0	N/C	N/C

TRAFFIC

Comprised of three motor units and three Chargers, the Traffic Enforcement Unit responds to traffic accidents and provides

increased enforcement in particularly challenging areas. This unit also provides extra coverage for specific congestion

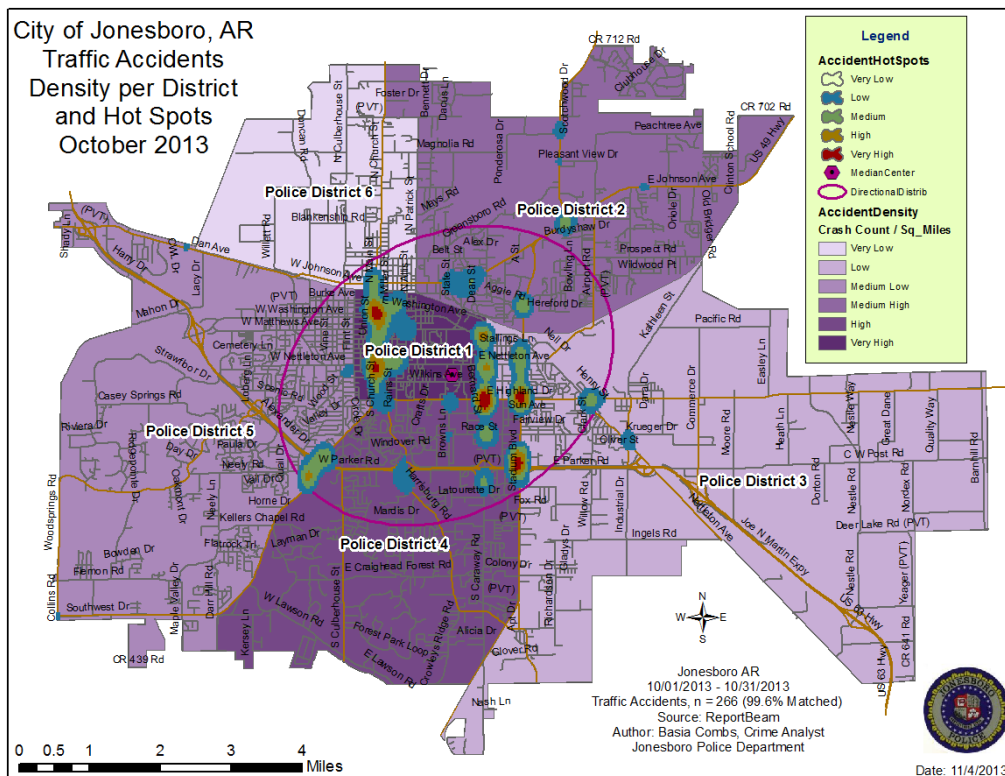
MONTHLY REPORT OCTOBER 2013

12 November 2013

problems and special events in the community. Last, they work details targeting

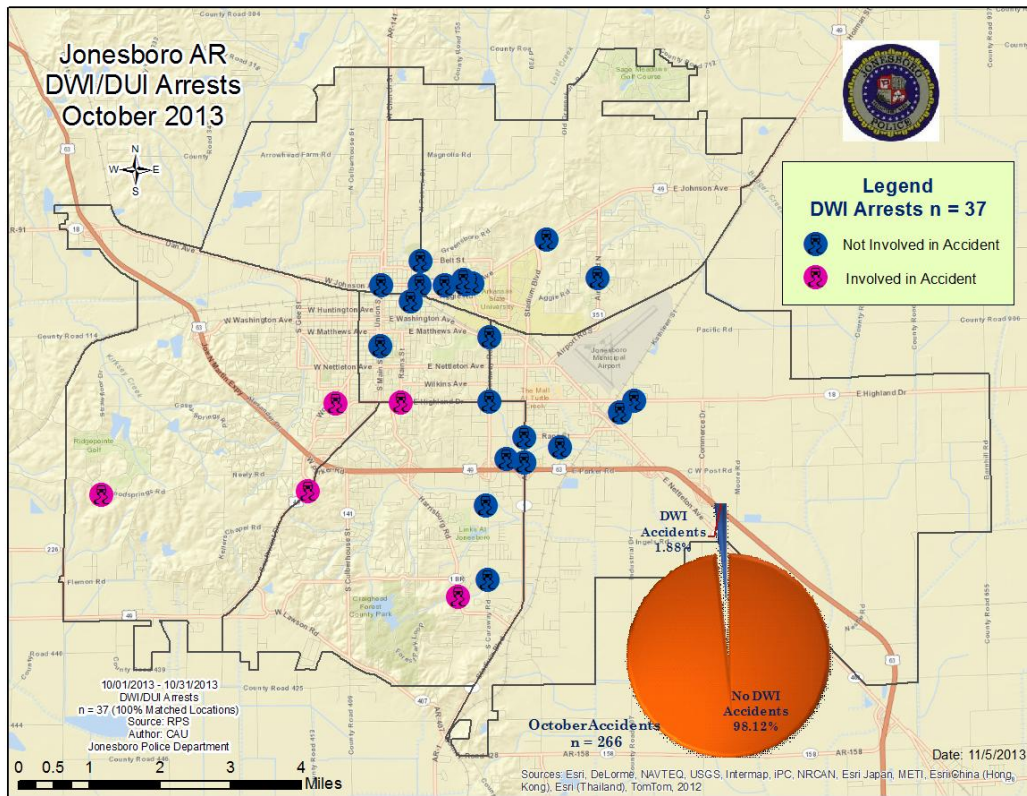
specific issues, such as DWI enforcement and traffic safety checkpoints.

Incidents	This Month	This Month Last Year	YTD	Last YTD	Change By Month	Change YTD
Street Accidents	194	175	1400	1406	11%	0%
Private Property Accidents	44	44	432	378	0%	14%
Traffic Citations	180	121	1034	1335	49%	-23%
DWI	2	3	13	28	-33%	-54%
Mis. Arrests	1	15	56	142	-93%	-61%
Felony Arrests	0	0	7	2	N/C	250%
Drug Arrests	0	0	0	0	N/C	N/C
Public Intoxication Arrests	0	0	0	0	N/C	N/C
Calls For Service	295	303	2357	2546	-3%	-7%
Alarms	0	0	0	0	N/C	N/C
Parking Citations	0	0	0	0	N/C	N/C
Written Warnings	348	83	1693	1087	319%	56%
TOTALS	1064	744	6992	6924	43%	1%
Value of Asstes Seized	\$ -	\$ -	\$ -	\$ -	N/C	N/C
Patrol Miles	6,908	5,838	46,511	59,290	18%	-22%
Hours Worked	1009.5	922	8299.5	8509.5	9%	-2%



MONTHLY REPORT OCTOBER 2013

12 November 2013



ANIMAL CONTROL

The Animal Control Division is responsible for educating the public on safe and humane issues regarding animal treatment, enforcing all animal laws and ordinances, assisting the

public in resolving animal issues, and protecting the safety and welfare of the citizens and animals in this community.

Incident/Service	This Month	This Month Last Year	YTD	Last YTD	Change By Month	Change YTD
Barking Complaints	7	15	80	80	-53%	0%
Bite Reports	6	5	48	74	20%	-35%
Door Hangers	55	42	506	695	31%	-27%
Welfare Checks	81	57	596	786	42%	-24%
Advised of Rights	1001	585	9178	9372	71%	-2%
Incident Reports	4	1	24	47	300%	-49%
Gone on Arrival	36	67	454	618	-46%	-27%
Complaints	722	636	7032	7461	14%	-6%
Desk Complaints	2045	1353	15437	14723	51%	5%
Captured Dogs	158	121	1510	1291	31%	17%
Captured Cats	32	9	202	109	256%	85%
Captured Wildlife	29	20	428	328	45%	30%
Chemical Captures	3	0	11	28	N/C	-61%
Traps	42	25	414	372	68%	11%
Deceased Animals	105	80	521	774	31%	-33%
Assist J.P.D.	8	3	58	58	167%	0%
Assist C.S.O.	1	1	8	4	0%	100%
Public Relations	403	234	4423	5127	72%	-14%

MONTHLY REPORT OCTOBER 2013

12 November 2013

Incident/Service	This Month	This Month Last Year	YTD	Last YTD	Change By Month	Change YTD
CITATIONS ISSUED	53	11	401	424	382%	-5%
WARNINGS ISSUED	170	88	1059	487	93%	117%
Physical Arrests	0	1	27	11	-100%	145%
City Warrants Served	0	2	50	41	-100%	22%
County Warrants Served	0	0	3	14	N/C	-79%
Felony Bench Warrants	0	0	3	2	N/C	50%
Euthanized	104	112	1030	773	-7%	33%
Deceased Animals Landfill lbs.	3940	2220	38690	32256	77%	20%
Wildlife Euthanized	29	20	428	316	45%	35%
Sent to Rescue Centers	16	1	50	60	1500%	-17%
Adoptions	23	46	348	455	-50%	-24%
Miles Driven	11,450	7175	91,616	71,343	60%	28%

FLEET MAINTNANCE

The Fleet Maintenance is responsible for all of the police vehicle maintenance upkeep, cleanliness, and purchasing. In addition, this

Division handles most of the purchasing of equipment, supplies, and uniforms for all of the Police Department.

Repair Costs by Model Year	This Month	This Month Last Year	YTD	Last YTD	Change By Month	Change YTD
95-99	\$ -	\$ -	\$ -	\$ -	N/C	N/C
2000	\$ -	\$ -	\$ -	\$ 115.09	N/C	-100%
2001	\$ -	\$ -	\$ -	\$ 300.46	N/C	-100%
2002	\$ -	\$ -	\$ -	\$ -	N/C	N/C
2003	\$ -	\$ -	\$ 1,791.95	\$ -	N/C	N/C
2004	\$ -	\$ 69.92	\$ 1,968.79	\$ 1,892.84	-100%	4%
2005	\$ -	\$ -	\$ 257.01	\$ 1,000.39	N/C	-74%
2006	\$ 2,149.07	\$ 7,287.82	\$ 30,291.61	\$ 42,068.00	-71%	-28%
2007	\$ 2,014.11	\$ 4,642.12	\$ 27,210.57	\$ 14,927.84	-57%	82%
2008	\$ 339.11	\$ 331.35	\$ 7,168.45	\$ 4,876.39	2%	47%
2009	\$ 1,672.46	\$ 1,167.29	\$ 5,221.88	\$ 3,493.55	N/C	N/C
2010	\$ -	\$ -	\$ 442.57	\$ 992.18	N/C	N/C
2011	\$ 161.30	\$ 667.70	\$ 2,371.64	\$ 1,823.11	N/C	N/C
2012	\$ -	\$ -	\$ -	\$ -	N/C	N/C
2013	\$ 362.36	n/a	\$ 416.16	n/a	N/C	N/C
Totals	\$ 6,698.41	\$ 14,166.20	\$ 77,140.63	\$ 71,489.85	-53%	8%

Routine Preventative Maintenance by Model Year	This Month	This Month Last Year	YTD	Last YTD	Change By Month	Change YTD
95-99	\$ -	\$ 416.54	\$ 174.13	\$ 488.54	-100%	-64%
2000	\$ 9.00	\$ -	\$ 29.00	\$ 20.00	N/C	45%
2001	\$ -	\$ -	\$ 186.59	\$ -	N/C	N/C
2002	\$ -	\$ -	\$ 20.00	\$ 100.46	N/C	-80%
2003	\$ 20.00	\$ 20.00	\$ 367.59	\$ 296.50	0%	24%
2004	\$ 20.00	\$ -	\$ 737.94	\$ 335.45	N/C	120%
2005	\$ 60.00	\$ 92.00	\$ 1,550.32	\$ 1,197.24	-35%	29%
2006	\$ 1,622.25	\$ 3,879.08	\$ 11,717.85	\$ 16,456.64	-58%	-29%
2007	\$ 1,978.16	\$ 889.19	\$ 12,151.19	\$ 9,174.96	122%	32%
2008	\$ 345.20	\$ 922.36	\$ 4,359.59	\$ 5,827.60	-63%	-25%
2009	\$ 821.26	\$ 756.99	\$ 5,363.49	\$ 7,975.36	N/C	N/C
2010	\$ -	\$ 1,842.55	\$ 1,827.49	\$ 3,841.75	N/C	N/C
2011	\$ 463.00	\$ 334.00	\$ 8,937.09	\$ 2,231.50	N/C	N/C
2012	\$ 115.00	\$ 175.59	\$ 583.42	\$ 598.40	N/C	N/C
2013	\$ 140.00	\$ -	\$ 1,431.40	\$ -	N/C	N/C
Totals	\$ 5,593.87	\$ 9,328.30	\$ 49,437.09	\$ 48,544.40	-40%	2%

MONTHLY REPORT OCTOBER 2013

12 November 2013

RECORDS

The Records Division is responsible for providing administrative and clerical support to the department. Major responsibilities include entering the accident and incident reports and tickets into the records database management system, assisting the general

public for report requests, performing criminal backgrounds, serving as a switchboard at times, performing validations, and setting up and managing the payment plans out of court.

RECORDS	This Month	This Month Last Year	YTD	Last YTD	Change By Month	Change YTD
Incident/Arrest Reports Processed	1207	1288	12445	12467	-6%	0%
Accident Reports Processed	268	260	2133	2134	3%	0%
Citations Processed	2932	4248	33033	41017	-31%	-19%
Warnings Processed	909	941	8753	8657	-3%	1%
Backgrounds	10	17	165	198	-41%	-17%
Fingerprints	0	71	639	1177	-100%	-46%
Photos	3	0	7	8	N/C	-13%
Accident Requests	125	142	1088	1201	-12%	-9%
Accident Requests Online	154	136	1,322	1,152	13%	15%

PROFESSIONAL STANDARDS

The Office of Professional Standards, a unit within Administration, is charged with the compilation and updating of an extensive set of policies and procedures and providing a general operations guideline and code of conduct for officers to follow. In the event

that a member of the public does experience a negative interaction with an officer, mechanisms are in place for them to lodge a complaint. All complaints are reviewed and investigations completed in a timely manner.

Professional Standards	This Month	This Month Last Year	YTD	Last YTD	Change By Month	Change YTD
Opened (TOTAL)	11	8	37	62	38%	-40%
Closed	11	8	39	60	38%	-35%
Inquiries	10	8	33	50	25%	-34%
Formal Investigations	1	0	9	7	N/C	29%
Sustained	10	5	25	45	100%	-44%
Not-Sustained	1	0	7	1	N/C	600%
Exonerated	0	0	5	4	N/C	25%
Unfounded	0	3	6	12	-100%	-50%

END OF REPORT

MONTHLY REPORT OCTOBER 2013

12 November 2013



Contact Information

Basia Combs, MPA, CCIA | Crime Analyst | Office of Crime Analysis & Criminal Intelligence
Jonesboro Police Department | 410 W Washington Ave | Jonesboro, AR 72401
Ph: 870-336-7196 | E-mail: bcombs@jonesboro.org | www.jonesboropolice.com
