

# Jonesboro Police Department

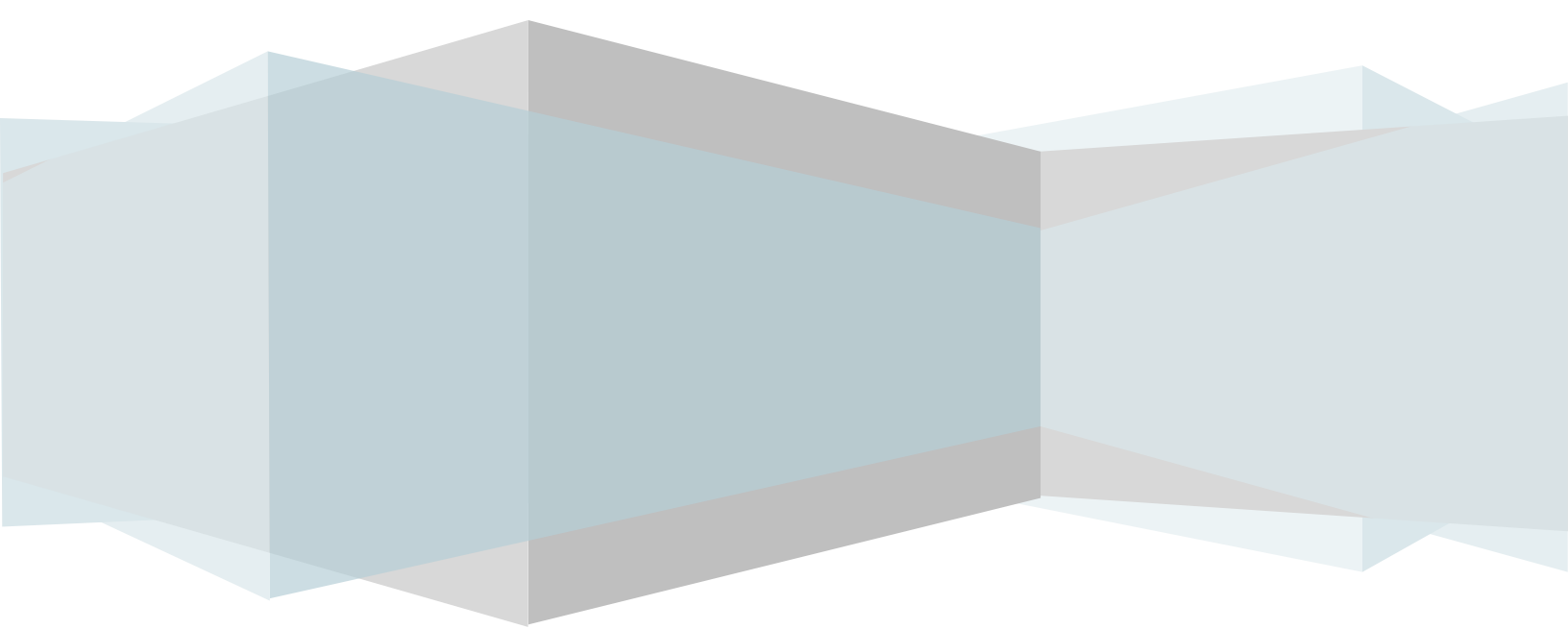


## Monthly Report

---

**November 2011**

Basia Combs, Crime Analyst



## EXECUTIVE SUMMARY

*The purpose of the Jonesboro Police Department Monthly Report is to compile data into one integrated report for review, allowing for a seamless flow of information for better decision-making. After each department collates their monthly numbers and sends it to the Office of Crime Analysis, it is organized into sections of departmental data, analyzed and packaged, and finally disseminated to department heads, the Chief of Police, the City Mayor, and the City Council. Major sections include Crime Analysis, Emergency 911, Uniform Police Division, Prowl, Criminal Investigative Division, Warrants, Drug Task Force, Traffic, Parking Enforcement, Animal Control, Fleet Maintenance, Records, and Professional Standards.*

### CRIME ANALYSIS

The Crime Analysis division consists of one Crime Analyst and one part-time Crime Analyst Assistant. The Crime Analyst position is responsible for the analysis and dissemination of crime activity data and the collection and maintenance of crime intelligence information for the city of Jonesboro. Additionally, the Crime Analyst is charged with providing the department with current and accurate crime maps, presenting crime activity data to audiences of interest, and responding to

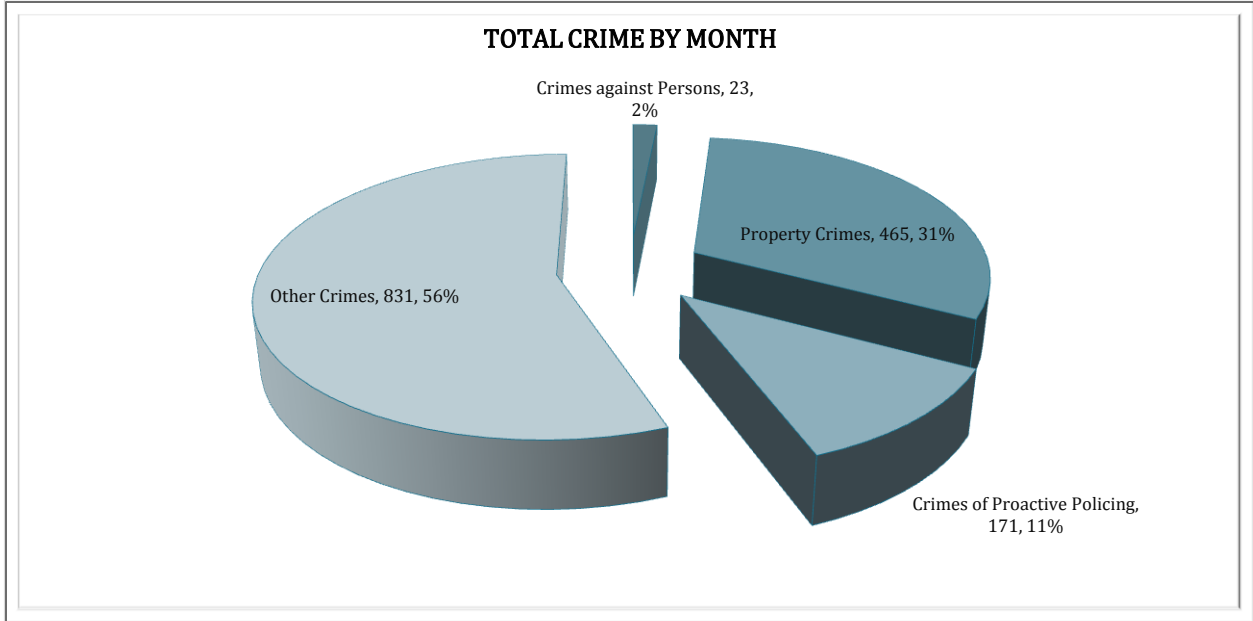
requests for crime data from civilians and departmental staff. Data exported from this division is used by field agents for more effective, efficient policing, administration for improved staffing decisions, and the Mayor's office for community decision making and enhanced public relations. The following section is broken down into Total Crime, Crimes against Persons, Property Crimes, Crimes of Proactive Policing, Other Crimes, and Arrest Demographics.

### TOTAL CRIME

The crime activity for the month of November 2011 is at a total of 1,490 offenses, an insignificant decrease from 1,498 offenses in November of 2010. With Jonesboro population equal to 67,263, the crime rate is at 22 crimes per 1,000 population for the month of November this year, compared to the 23 crimes per 1,000 population last year, a 5% decrease\*. As indicated on a pie chart

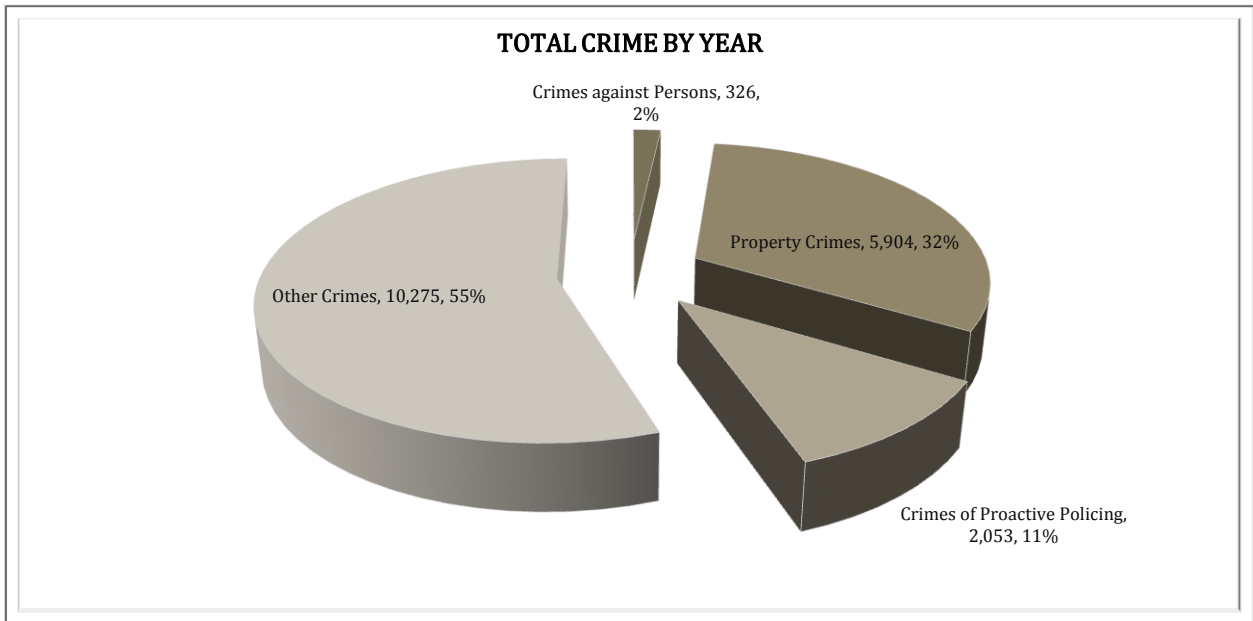
on the following page, Other Crimes absorb the majority, 56%, of this month's crime activity ( $n = 831$ ). Property crimes fall into a second place and comprise of 31% of all the crimes ( $n = 465$ ). Following in third and fourth places are crimes of proactive policing at 11% ( $n = 171$ ) and crimes against persons at 2% ( $n = 23$ ), respectively.

\* Note: 2010 numbers are based on 2010 population estimate,  $n = 64,374$ .



Year to date data includes number of crimes from January through November of this year, of which there is a total of 18,558 offenses, up from 17,567 offenses that occurred January through November of last year, a 6% decrease. The year to date crime rate is 276 crimes per 1,000 population, a 1% increase from last year's

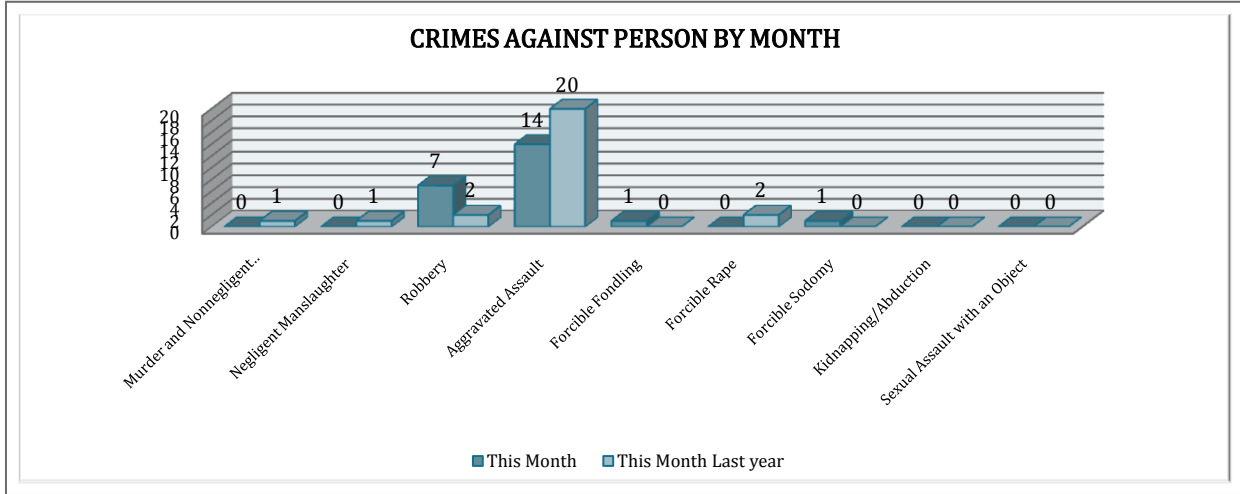
to date crime rate. Other Crimes have the highest percentage of total crimes and are at 55% ( $n = 10,275$ ). Property Crimes comprise of 32% of total crimes to date where  $n = 5,904$ . Crimes of Proactive Policing amount to 11% ( $n = 2,053$ ) and crimes against persons comprise of 2% of total year to date number of crimes ( $n = 326$ ).



### CRIMES AGAINST PERSONS

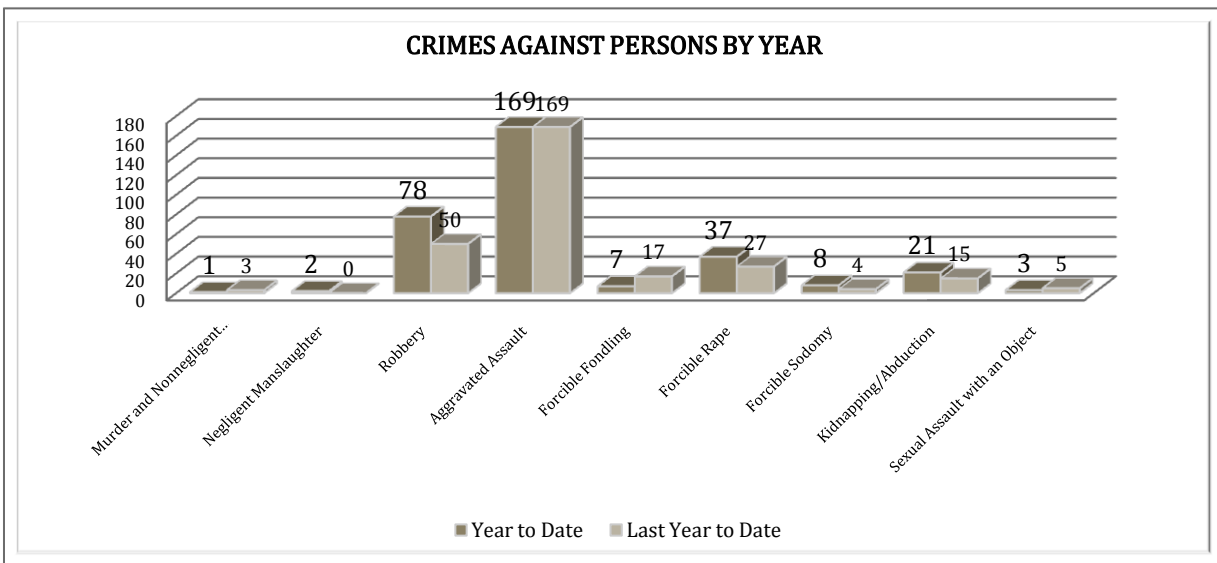
There are 9 crimes that make up this section. There were a total of 23 offenses in this area this month, a 12% decrease, comparing to the last year's total in October. Robberies are up by 5 offenses. Aggravated Assault decreased 30%,

comparing to the last year's data for the month of November. As demonstrated on the following chart, there are no significant changes in other crimes for this category.



Bellows bar graph shows the year to date data for Crimes against Persons, which amounts to a total of 326 incidents for this category of crimes, a 12% increase, comparing to the year to date data of last

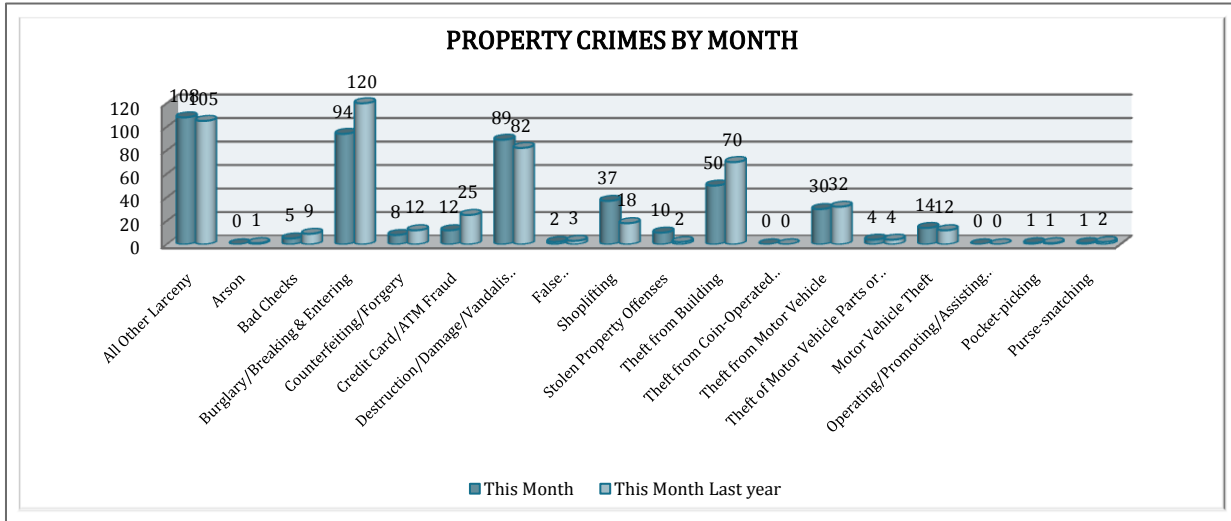
year. Robberies increased by 56% and Forcible Rape by 37% while. There were 10 less incidents to date this year in Forcible Fondling category.



PROPERTY CRIMES

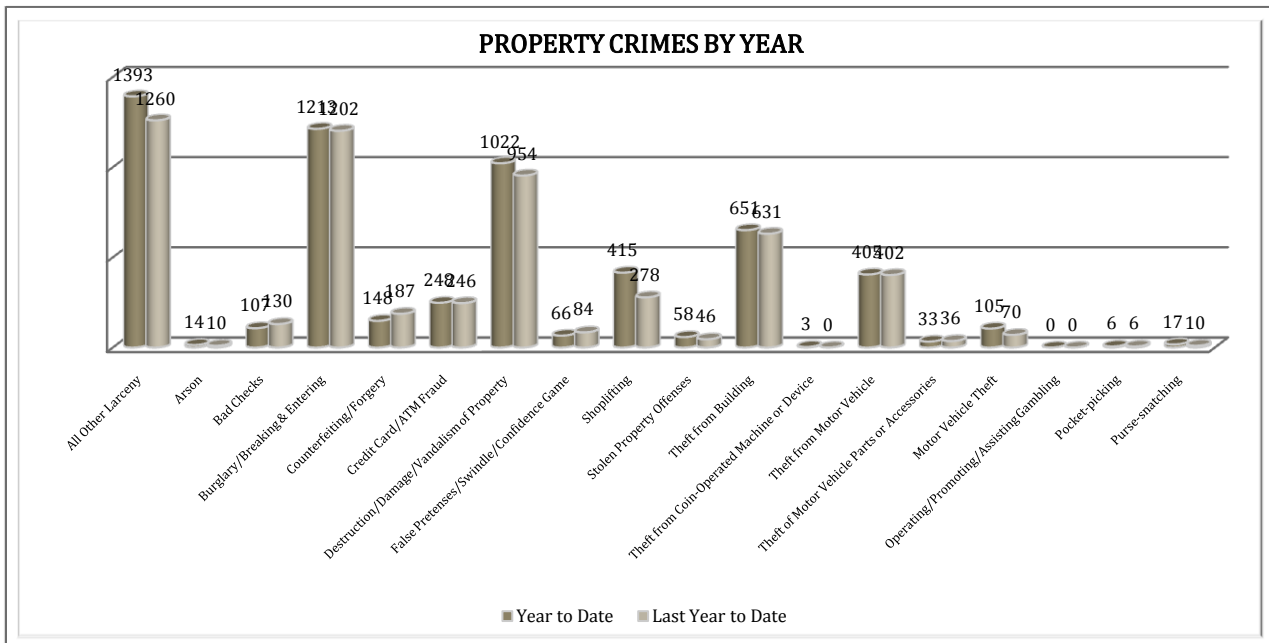
This section displays the criminal activity for 18 crimes, all against property. This month, there were a total of 465 Property Crimes, a 7% decrease comparing to November of the last year. The data

indicates a significant change in Shoplifting, 106% up. Burglary/Breaking and Entering decreased by 22% and Theft from Building by 29%.



To date this year, 5,904 property offenses have occurred, a 6% increase, comparing to the last year's data at this same time. There is 18% decrease in Bad Checks, 21% decrease in Counterfeiting/Forgery, and 21% decrease in False Pretenses/Swindle/

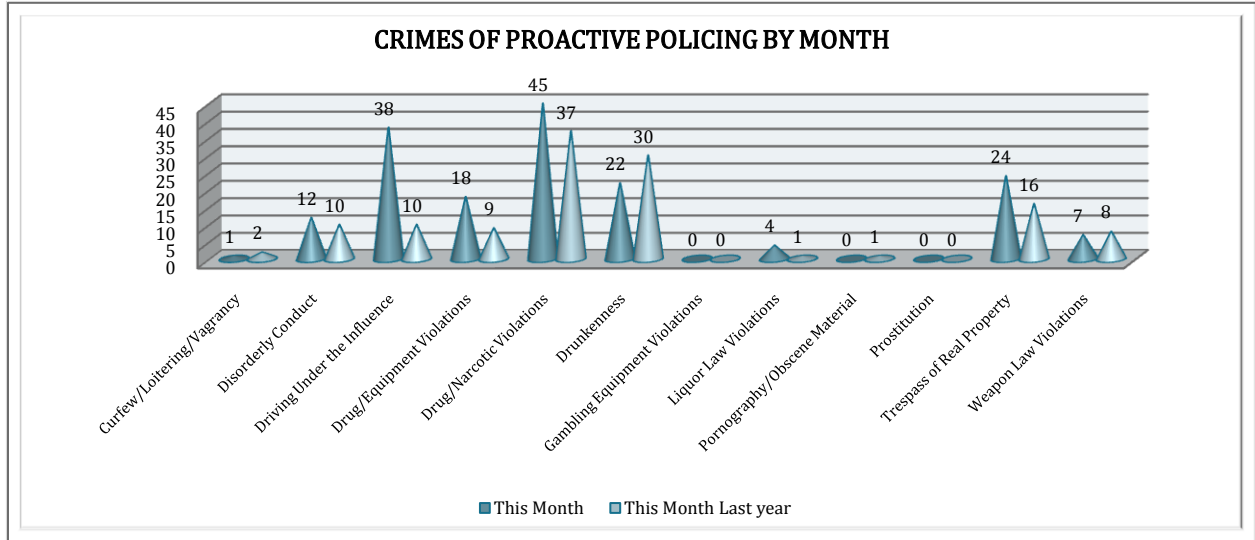
Confidence Game. Comparing to the last year's to date frequencies of offenses in this category, All Other Larceny increased by 11%, Motor Vehicle Theft increased by 50%, Shoplifting increased by 49%, and Arson by 40%.



### CRIMES OF PROACTIVE POLICING

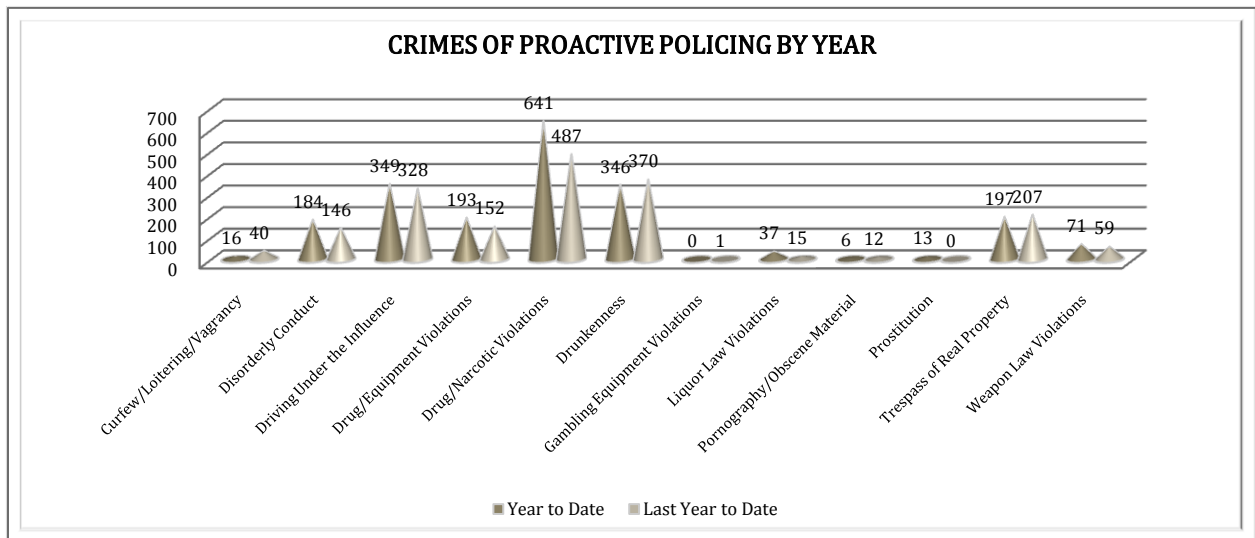
Crimes of Proactive Policing are those crimes that result from police officers actively policing the streets to combat certain types of street crime. As chart below indicates, twelve crimes fall under this category. A total of 171 offenses have occurred this month, a 38% increase,

comparing to November of the last year. There is an evident increase in DUI, 280% increase. Drug/Narcotic Violations increased by 22%, Drug/Equipment Violations by 100% and Disorderly Conduct by 20%.



To date for the year 2011, there have been 12,053 crimes of proactive policing reported, 13% increase, comparing to the last year's to date data. Drug/Narcotic Violations increased by 32%, Weapon Law Violations increased by 20%, and

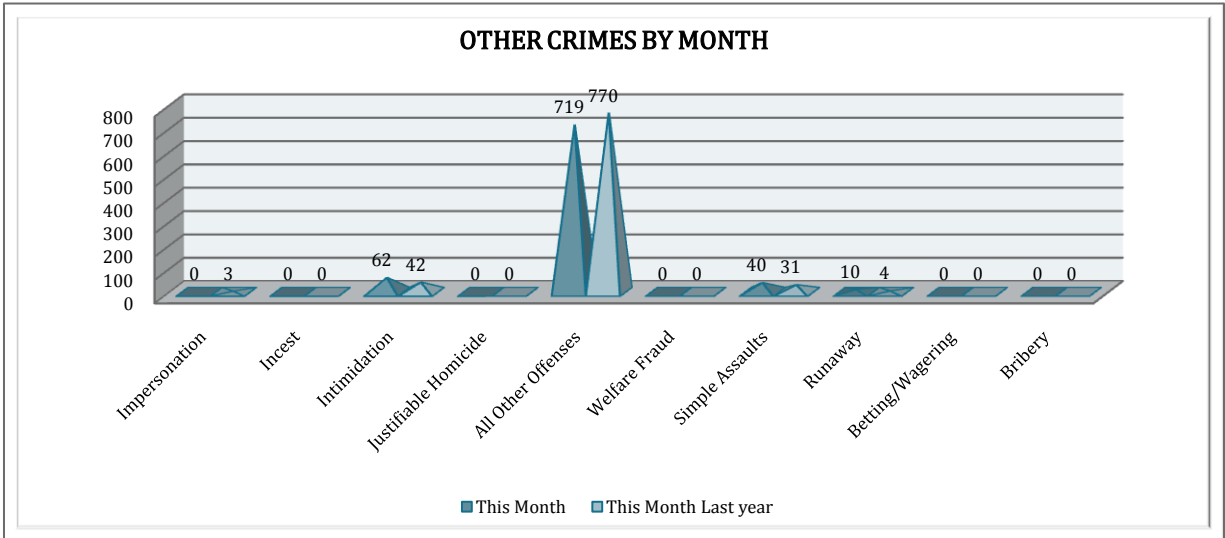
Drug/Equipment Violations increased by 27%. Liquor Law Violations increased by 147% and Driving Under Influence by 26%. Disorderly Conduct increased by 26%.



**OTHER CRIMES**

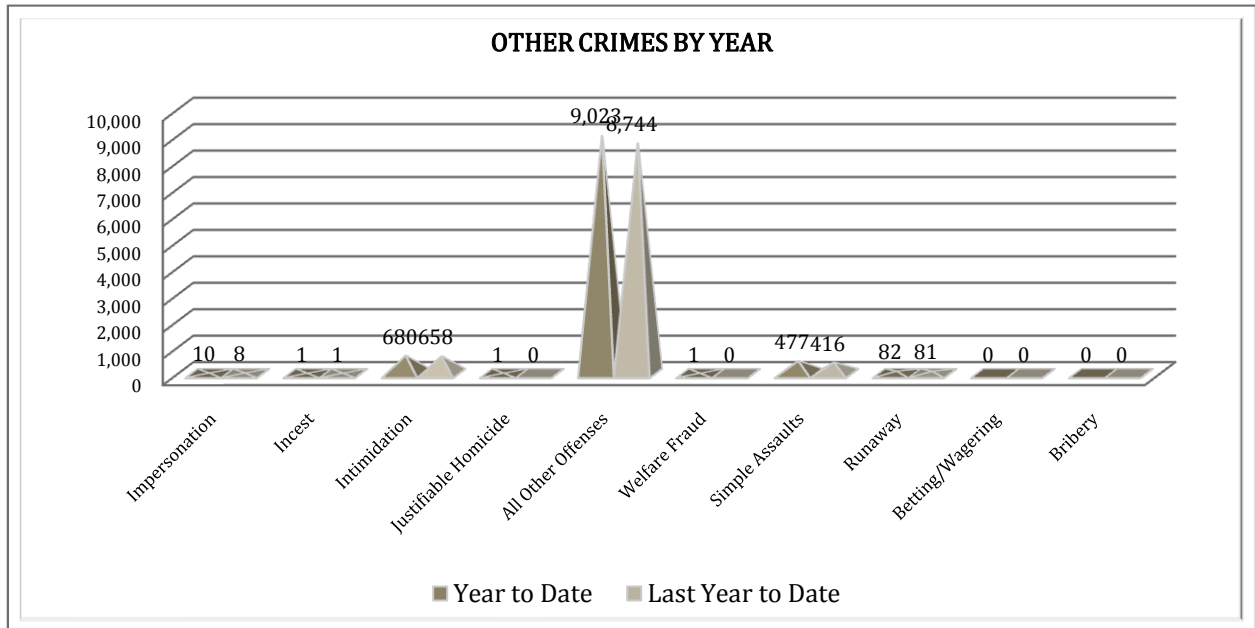
There are 10 crimes that fall into the Other Crimes category. This month, there have been a total of 831 Other Crimes, down from 850 in November of the last year, a 2% decrease. The All Other

Offenses within this category decreased by 7% while Intimidation increased by 48% and Simple Assaults increased by 29%.



To date this year, there have been 10,275 Other Crimes offenses, up from 9,908 as of last year's to date offenses, a 4% increase. A notable change occurs for Simple

Assaults, a 15% increase. No statistically significant changes have been observed for other offenses within this category, comparing to the last year's data.

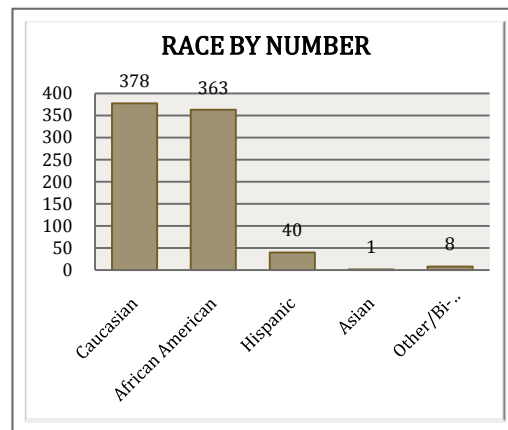
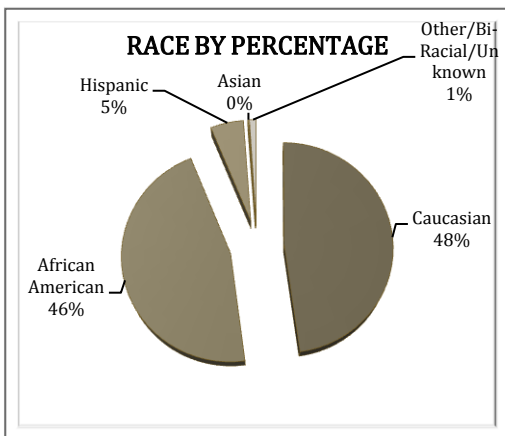
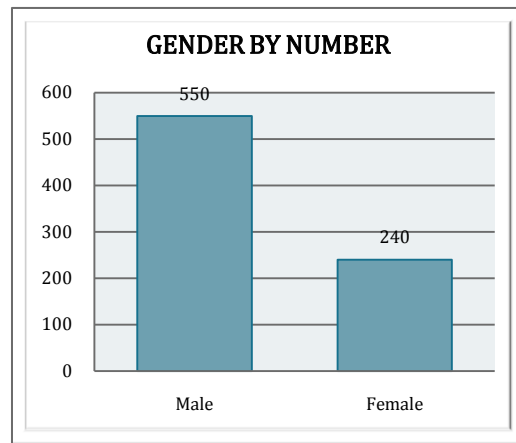
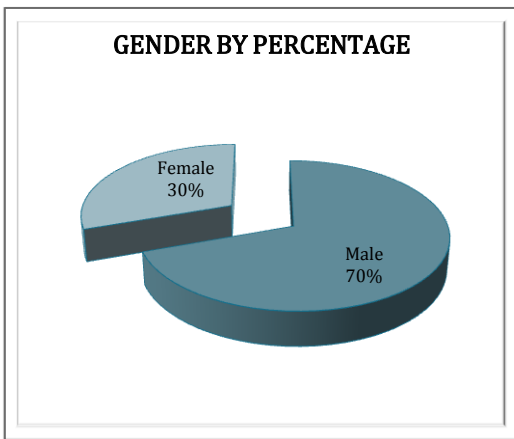


**ARREST DEMOGRAPHICS**

In November, there were a total of 790 arrests. Comparing with the last year's data, there was a 4% increase in arrests; that is .53 arrests per crime in November of this year, comparing to .51 arrests per crime last year, no significant change.

This section breaks down this month's arrests by race and gender. The majority

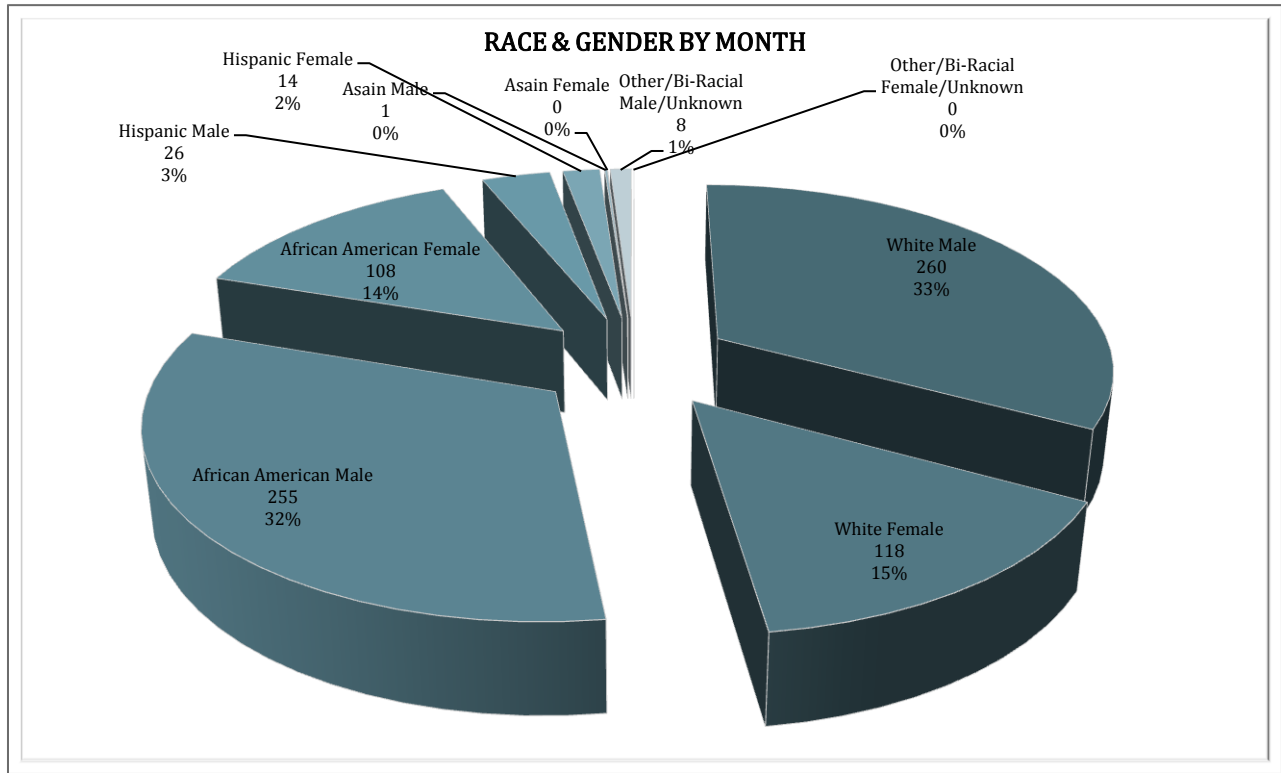
of offenders have been male ( $n = 550$ ), as opposed to female ( $n = 240$ ) and Caucasian ( $n = 378$ ) and African American ( $n = 363$ ) as opposed to Hispanic ( $n = 40$ ), Asian ( $n = 1$ ), or other/unknown/bi-racial ( $n = 8$ ).



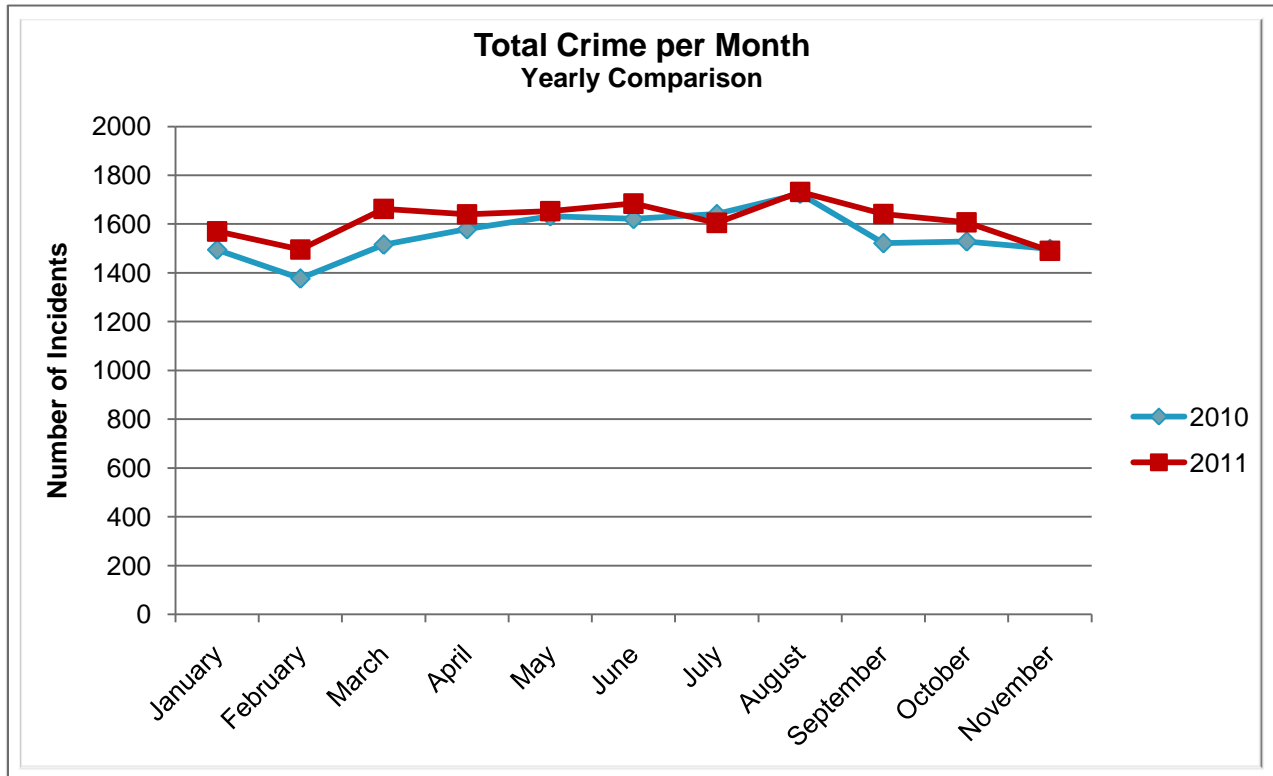
Caucasian males make up the majority, 33%, of arrestees this month ( $n = 260$ ). African American males make up 32% of arrestees for the month of November ( $n = 255$ ). Caucasian females make up 15% ( $n = 118$ ) and African American females make up 14% ( $n = 108$ ). Hispanic males make up 3% ( $n = 26$ ) and Hispanic

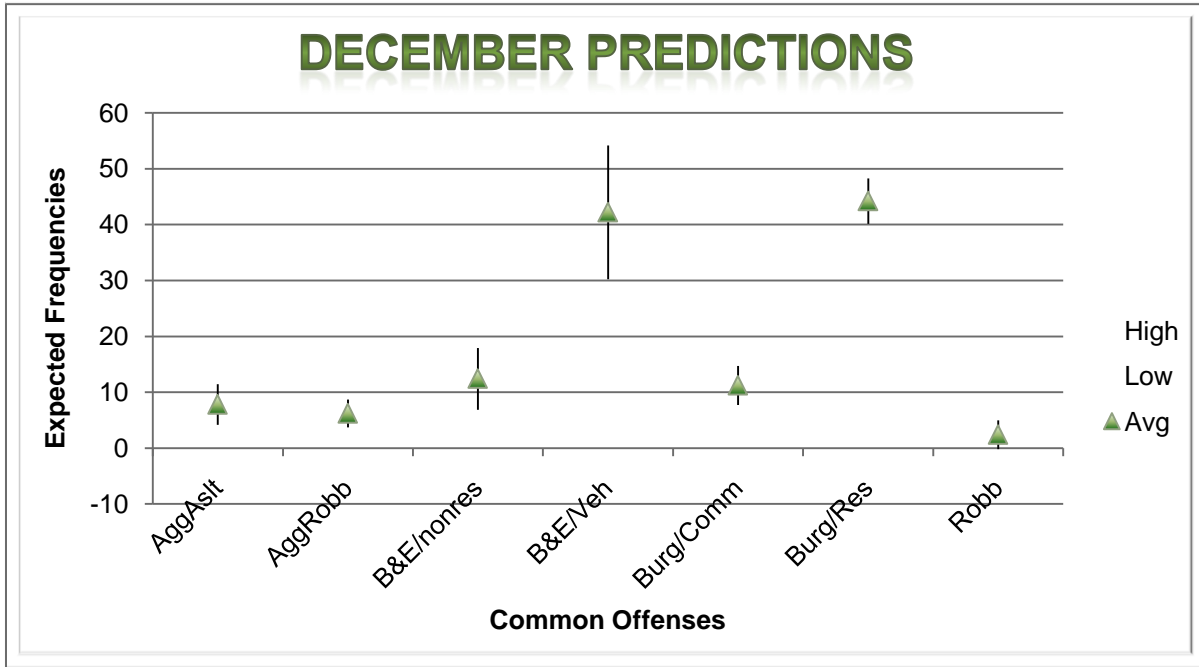
females make up 2% ( $n = 14$ ). There were also 8 Other/Biracial Males and 1 Asian Male arrested in the month of November. This distribution can be reviewed in the pie chart on the following page.





\*Note: The 0% labels may represent rounded real percentage values of 0.99 and less.





\* Above predictions are based on 5 year December Data of Most Common Offenses; Source: RPS.

### EMERGENCY 911

Also known as Public Safety Answering Point (PSAP), the Emergency 911 Division is responsible for answering all calls from public for emergency assistance, accessing the needed information to best assist, and then assigning the most efficient and effective

emergency response. In addition, this division is responsible for setting priority call dispatching to field units including Police, Fire, and EMS. Emergency 911 also maintains all records for radio logs, calls for service, and other emergency service data collections.

Calls by Type	This Month	This Month Last Year	YTD	Last YTD	Change By Month	Change YTD
Land Line E911	761	937	8,267	9,805	-19%	-16%
Cell Phone E911	3,470	3,098	39,403	36,808	12%	7%
Admin Lines Non Emergency	14,506	14,592	161,873	171,364	-1%	-6%
<b>TOTALS</b>	<b>18,737</b>	<b>18,627</b>	<b>209,543</b>	<b>217,977</b>	<b>1%</b>	<b>-4%</b>
Calls by Agency	This Month	This Month Last Year	YTD	Last YTD	Change By Month	Change YTD
Jonesboro PD Calls	6,331	5,490	67,440	67,184	15%	0%
Craighead Cty Sheriff	1,205	1,031	12,396	11,696	17%	6%
Jonesboro Fire Dpt - dispatch	184	176	1,889	1,845	5%	2%
Jonesboro Fire Dpt - Med Asst	87	101	1,069	1,266	-14%	-16%
Craighead Cty - Fire	36	117	550	861	-69%	-36%
Craighead Cty - 1st Responder	70	97	859	860	-28%	0%
Emerson Ambulance	209	245	2,930	2,687	-15%	9%
Medic One	257	290	2,978	3,218	-11%	-7%
Air Evac	0	0	10	12	N/C	-17%
Coroner	1	2	22	29	-50%	-24%
ARK State Police	9	14	144	170	-36%	-15%
Jonesboro Animal Control	2	58	154	767	-97%	-80%
Wreckers Called	155	133	1,455	1,846	17%	-21%
<b>TOTALS</b>	<b>8,546</b>	<b>7,754</b>	<b>91,896</b>	<b>92,441</b>	<b>10%</b>	<b>-1%</b>

Calls by Municipality	This Month	This Month Last Year	YTD	Last YTD	Change By Month	Change YTD
Bay PD	104	59	1073	1080	76%	-1%
Bono PD	147	226	1810	2207	-35%	-18%
Brookland PD	184	138	1514	2148	33%	-30%
Caraway PD	119	72	976	1082	65%	-10%
Cash PD	21	39	704	559	-46%	26%
Egypt PD	6	16	106	252	-63%	-58%
Lake City PD	75	96	1104	1329	-22%	-17%
Monette PD	176	125	1517	1545	41%	-2%
<b>TOTALS</b>	<b>832</b>	<b>771</b>	<b>8,804</b>	<b>10,202</b>	<b>8%</b>	<b>-14%</b>

## UNIFORM PATROL DIVISION

The UPD is responsible for responding to calls into the Emergency - 911 Division by civilians and are normally the first responders. Jonesboro is divided into 6 patrol districts. Officers from UPD are assigned to a

district and work the same district every shift. In addition, when a Traffic Officer is not available, a UPD Officer will respond to traffic accidents and assist in directing traffic when necessary.

Incidents	This Month	This Month Last Year	YTD	Last YTD	Change By Month	Change YTD
Calls for Service	6,335	5,415	74,281	66,224	17%	12%
Complaints / Calls	4,090	3,687	45,521	41,737	11%	9%
Assists	1,045	939	12,816	11,724	NC	NC
Incident Reports	943	880	10,679	10,338	7%	3%
Street Accidents	65	91	883	1,137	-29%	-22%
Private Property Accidents	34	14	490	287	143%	71%
Traffic Stops	1,970	1,609	22,174	20,954	22%	6%
Traffic Citations	568	630	7,336	7,747	-10%	-5%
DWI	36	10	277	223	260%	24%
Mis. Arrests	654	557	5,660	4,652	NC	NC
Felony Arrests	211	235	1,139	877	NC	NC
Warrants Served	1,383	978	16,358	12,335	41%	33%
Alarms	345	217	3,666	2,484	59%	48%
Written Warnings	706	625	7,700	7,097		
<b>TOTALS</b>	<b>18,385</b>	<b>15,887</b>	<b>208,980</b>	<b>187,816</b>	<b>16%</b>	<b>11%</b>
Hours Worked	9,345	10,542	107,791	108,652	-11%	NC

## PROWL

The Prowl unit is a uniformed street crimes unit specializing in criminal patrol, narcotics enforcement, gang investigation, and prostitution activity. The unit conducts directed patrols, investigates citizen complaints of street-level criminal activity,

and directly assists the 2<sup>nd</sup> Judicial Drug Task Force. PROWL also assists any division within the Jonesboro Police Department at any time when needed. (See following page for details).

Incidents	This Month	This Month Last Year	YTD	Last YTD	Change By Month	Change YTD
Street Accidents	0	0	0	0	N/C	N/C
Private Property Accidents	0	0	0	1	N/C	-100%
Traffic Citations	16	33	317	343	-52%	-8%
DWI	0	0	1	1	N/C	0%
Mis. Arrests	166	94	1,105	1,009	77%	10%
Felony Arrests	12	21	260	303	-43%	-14%
Drug Arrests	14	26	266	304	-46%	-13%
Public Intoxication Arrests	0	0	2	0	N/C	N/C
Calls For Service	65	109	952	1,010	-40%	-6%
Alarms	0	0	0	0	N/C	N/C
Parking Citations	0	0	0	0	N/C	N/C
Written Warnings	27	35	479	255	-23%	88%
Assists	0	0	0	0	N/C	N/C
<b>TOTALS</b>	<b>300</b>	<b>318</b>	<b>3,382</b>	<b>3,226</b>	<b>-6%</b>	<b>5%</b>
Value of Drugs Seized	\$16,560	\$5,030	\$70,110	\$74,268	229%	-6%
Value of Assets Seized	100	8,010	52,330	66,160	-99%	-21%
Patrol Miles	5,550	5,900	58,170	56,200	-6%	4%

## CRIMINAL INVESTIGATIVE DIVISION

The CID is responsible for conducting follow-up investigations into criminal acts reported to the Jonesboro Police Department. The primary goal is to collect and present evidence that conclusively leads to a

successful arrest. Additionally, CID is charged with clearing additional crimes, recovering stolen property, preventing additional crimes, and gathering intelligence information.

Investigations	This Month	This Month Last Year	YTD	Last YTD	Change By Month	Change YTD
Criminal Investigations Assigned	59	87	921	977	-32%	-6%
Criminal Investigations Closed	60	81	741	891	-26%	-17%
Cleared by Arrests	45	56	533	535	-20%	0%
Unfounded	6	6	69	92	0%	-25%
Exceptionally Cleared	3	12	89	149	-75%	-40%
Filed With Prosecutors Office	6	1	38	69	500%	-45%
<b>TOTALS</b>	<b>179</b>	<b>243</b>	<b>2391</b>	<b>2713</b>	<b>-26%</b>	<b>-12%</b>
Crimes Against Persons	This Month	This Month Last Year	YTD	Last YTD	Change By Month	Change YTD
Criminal Investigations Assigned	12	21	219	205	-43%	7%
Criminal Investigations Closed	12	21	214	217	-43%	-1%
Cleared by Arrests	10	1	159	127	900%	25%
Unfounded	1	2	16	12	-50%	33%
Exceptionally Cleared	0	0	29	45	N/C	-36%
Filed With Prosecutors Office	1		14	15	N/C	-7%
<b>TOTALS</b>	<b>36</b>	<b>45</b>	<b>651</b>	<b>621</b>	<b>-20%</b>	<b>5%</b>
Property Crimes	This Month	This Month Last Year	YTD	Last YTD	Change By Month	Change YTD
Criminal Investigations Assigned	46	61	646	692	-25%	-7%
Criminal Investigations Closed	45	49	459	564	-8%	-19%
Cleared by Arrests	32	36	349	353	-11%	-1%
Unfounded	5	2	46	65	150%	-29%
Exceptionally Cleared	3	10	66	102	-70%	-35%
Filed With Prosecutors Office	5	1	16	44	400%	-64%
<b>TOTALS</b>	<b>136</b>	<b>159</b>	<b>1582</b>	<b>1820</b>	<b>-14%</b>	<b>-13%</b>

Crimes Against Children	This Month	This Month Last Year	YTD	Last YTD	Change By Month	Change YTD
Criminal Investigations Assigned	0	3	25	59	-100%	-58%
Criminal Investigations Closed	4	5	37	70	-20%	-47%
Cleared by Arrests	3	2	14	32	50%	-56%
Unfounded	0	3	14	19	-100%	-26%
Exceptionally Cleared	0	0	1	7	N/C	-86%
Filed With Prosecutors Office	1	0	5	4	N/C	25%
<b>TOTALS</b>	<b>8</b>	<b>13</b>	<b>96</b>	<b>191</b>	<b>-38%</b>	<b>-50%</b>
<b>Miscellaneous Investigations Assigned</b>	<b>1</b>		<b>26</b>		<b>N/C</b>	<b>N/C</b>
<b>Miscellaneous Investigations Cleared</b>	<b>4</b>		<b>37</b>		<b>N/C</b>	<b>N/C</b>

## WARRANTS

The Warrants Division is responsible for serving warrants, criminal summonses, and subpoenas that are issued by the District Court. On city court days, the Warrants Division provides a bailiff for court and a transport officer. In addition, this Division is

responsible for transporting wanted persons arrested in other jurisdictions back to Jonesboro. The STEP program operates within this division and is a grant-funded operation in which officers can get paid overtime to enforce the safety belt law.

Arrests	This Month	This Month Last Year	YTD	Last YTD	Change By Month	Change YTD
Misdemeanor	990	1311	8898	8573	-24%	4%
Felony	0	0	10	4	N/C	150%
<b>Total Arrests</b>	<b>990</b>	<b>1311</b>	<b>8908</b>	<b>8577</b>	<b>-24%</b>	<b>4%</b>
Warrants by Activity	This Month	This Month Last Year	YTD	Last YTD	Change By Month	Change YTD
Subpoenas	434	266	2988	2755	63%	8%
Commitments	0	2	8	22	-100%	-64%
Traffic Citations	0	0	10	13	N/C	-23%
Complaints	0	0	5	0	N/C	N/C
Assist	0	0	0	0	N/C	N/C
Alarms	0	0	0	0	N/C	N/C
Hours by Activity	This Month	This Month Last Year	YTD	Last YTD	Change By Month	Change YTD
SI Criminal	265.5	316.5	2504.5	2506.38	-16%	0%
Court	119.25	126.5	1448.75	1443.58	-6%	0%
Prisoner Transport	28.5	26	288	305.68	10%	-6%
Hours Worked	This Month	This Month Last Year	YTD	Last YTD	Change By Month	Change YTD
Regular Hours Worked	595	739	6833	6473.5	-19%	6%
Overtime Hours Worked	2.75	2.5	88.25	61	10%	45%
<b>TOTAL Hours Worked</b>	<b>597.75</b>	<b>741.5</b>	<b>6921.3</b>	<b>6534.5</b>	<b>-19%</b>	<b>6%</b>
Mileage	This Month	This Month Last Year	YTD	Last YTD	Change By Month	Change YTD
<b>Total Mileage</b>	<b>2666</b>	<b>3323</b>	<b>28273</b>	<b>32902</b>	<b>-20%</b>	<b>-14%</b>
STEP	This Month	This Month Last Year	YTD	Last YTD	Change By Month	Change YTD
DWI Arrest	0	1	10	6	-100%	67%
DUI Arrest	0	0	0	0	N/C	N/C
Traffic Citations	177	92	1694	1251	92%	35%
Felony Arrests	0	0	1	2	N/C	-50%
Drug Arrests	0	0	0	1	N/C	-100%
<b>STEP TOTALS</b>	<b>177</b>	<b>93</b>	<b>1705</b>	<b>1260</b>	<b>90%</b>	<b>35%</b>

<b>STEP Hours Worked</b>	115.5	126.5	956.5	1225	-9%	-22%
<b>STEP Miles Driven</b>	721	996	7833	8866	-28%	-12%

### DRUG TASK FORCE

The DTF is responsible for investigating major drug traffickers in the area, including all types of illegal drugs. They work closely

with local, state, and federal agencies to eradicate drugs from the community.

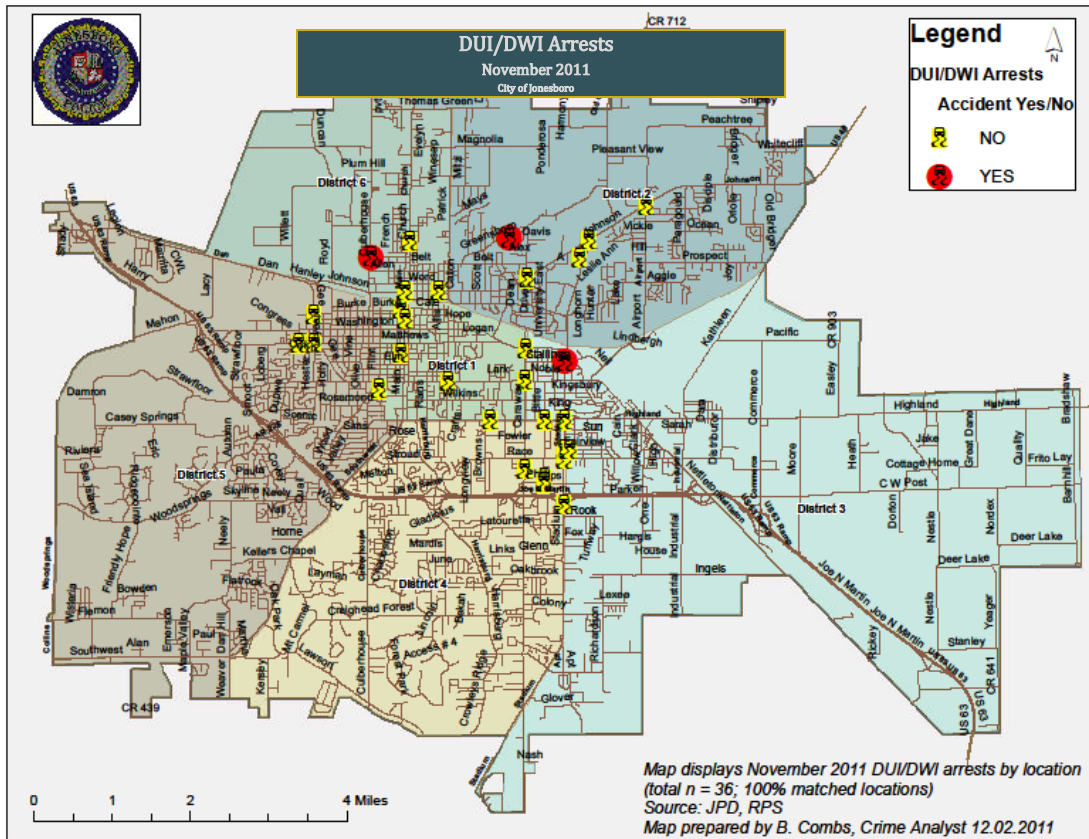
INVESTIGATIONS	This Month	This Month Last Year	YTD	Last YTD	Change By Month	Change YTD
Opened	13	24	257	298	-46%	-14%
Closed	14	14	251	256	0%	-2%
<b>TOTAL</b>	<b>14</b>	<b>26</b>	<b>282</b>	<b>338</b>	<b>-46%</b>	<b>-17%</b>
With Nexus to Jonesboro	This Month	This Month Last Year	YTD	Last YTD	Change By Month	Change YTD
Opened	15	25	266	265	-40%	0%
Closed				0	N/C	N/C
<b>TOTAL</b>	<b>15</b>	<b>25</b>	<b>266</b>	<b>265</b>	<b>-40%</b>	<b>0%</b>
Outside Jonesboro (No Known Nexus)	This Month	This Month Last Year	YTD	Last YTD	Change By Month	Change YTD
Opened	0	1	13	17	-100%	-24%
Closed	0	0		0	N/C	N/C
<b>TOTAL</b>	<b>0</b>	<b>1</b>	<b>13</b>	<b>17</b>	<b>-100%</b>	<b>-24%</b>
ASSISTANCE RENDERED	This Month	This Month Last Year	YTD	Last YTD	Change By Month	Change YTD
Assist to Outside Agencies	2	1	18	30	100%	-40%
Assist to Jonesboro UPD/CID	13	13	146	163	0%	-10%
ARRESTS	This Month	This Month Last Year	YTD	Last YTD	Change By Month	Change YTD
Miscellaneous	12	5	93	59	140%	58%
Felony	28	22	337	377	27%	-11%
Marijuana	6	2	82	75	200%	9%
Cocaine	2	3	21	20	-33%	5%
Crack Cocaine	3	2	28	42	50%	-33%
Methamphetamine/ICE	2	7	105	91	-71%	15%
LSD	0	0	0	0	N/C	N/C
Ecstasy (MDMA or Other Designer Drug)	0	0	0	5	N/C	-100%
Prescription	1	0	22	18	N/C	22%
Opiates (Heroin,Opium)	0	0	1	0	N/C	N/C
Labs	0	2	16	26	-100%	-38%
All Other Drug Offenses	0	0	0	0	N/C	N/C
ASSET FORFEITURE	This Month	This Month Last Year	YTD	Last YTD	Change By Month	Change YTD
Vehicles Seized(No.)	0	0	2	5	N/C	-60%
Value of Assets Seized(Includes Value of vehicles)	\$0	\$12,000	\$63,229	\$56,157	-100%	13%
Asset Value Awarded to Jonesboro PD (State)		\$0	\$0	\$0	N/C	N/C
Asset Value Awarded to Jonesboro PD (Federal)		\$0	\$0	\$0	N/C	N/C
Asset Value Awarded to Jonesboro PD (Total)		\$0	\$0	\$0	N/C	N/C
ARRESTS DEMOGRAPHICS	This Month	This Month Last Year	YTD	Last YTD	Change By Month	Change YTD
White	10	10	185	144	0%	28%
African American	6	4	96	77	50%	25%
Latino	2	1	10	29	100%	-66%
Asian	0	0	1	1	N/C	0%
Other/Bi-Racial	1	0	1	0	N/C	N/C
Male	11	12	209	190	-8%	10%
Female	8	4	81	47	100%	72%
White Male	5	8	117	108	-38%	8%
White Female	5	2	65	39	150%	67%
African American Male	3	2	79	74	50%	7%
African American Female	3	2	14	5	50%	180%
Latino Male	2	1	10	24	100%	-58%
Latino Female	0	0	0	3	N/C	-100%
Asian Male	0	0	0	1	N/C	-100%
Asian Female	0	0	0	0	N/C	N/C
Other/Bi-Racial Male	0	0	0	0	N/C	N/C
Other/Bi-Racial Female	0	0	0	0	N/C	N/C

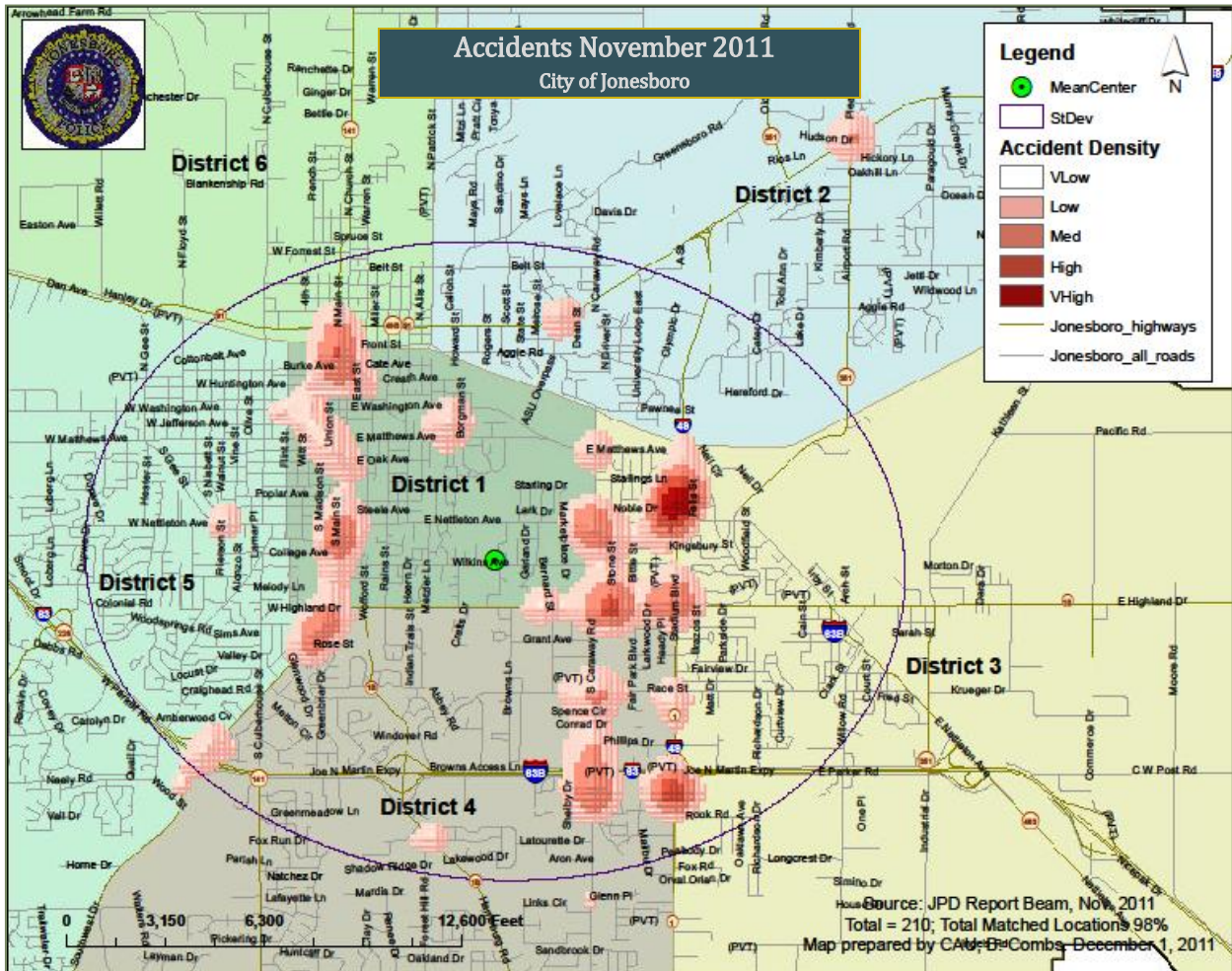
## TRAFFIC

Comprised of three motor units and three Chargers, the Traffic Enforcement Unit responds to traffic accidents and provides increased enforcement in particularly challenging areas. This unit also provides

extra coverage for specific congestion problems and special events in the community. Last, they work details targeting specific issues, such as DWI enforcement and traffic safety checkpoints.

Incidents	This Month	This Month Last Year	YTD	Last YTD	Change By Month	Change YTD
Street Accidents	156	135	1473	1436	16%	3%
Private Property Accidents	30	31	436	400	-3%	9%
Traffic Citations	90	165	1920	2571	-45%	-25%
DWI	2	0	39	30	N/C	30%
Mis. Arrests	3	11	168	223	-73%	-25%
Felony Arrests	1	0	16	38	N/C	-58%
Drug Arrests	0	0	0	0	N/C	N/C
Public Intoxication Arrests	0	0	2	2	N/C	0%
Calls For Service	283	227	3075	2938	25%	5%
Alarms	1	4	14	20	-75%	-30%
Parking Citations	0	0	0	0	N/C	N/C
Written Warnings	20	117	753	1209	-83%	-38%
<b>TOTALS</b>	<b>586</b>	<b>690</b>	<b>7896</b>	<b>8867</b>	<b>-15%</b>	<b>-11%</b>
Value of Asstes Seized	\$0	\$0	\$0	\$0	N/C	N/C
Patrol Miles	4,847	4,906	52,854	57,549	-1%	-8%
Hours Worked	807	707	8590.5	8485.5	14%	1%





### PARKING ENFORCEMENT

The Parking Enforcement Division is responsible for enforcing parking laws in the downtown area. This service provides a safe

and convenient parking situation for the public.

CITATIONS ISSUED	This Month	This Month Last Year	YTD	Last YTD	Change By Month	Change YTD
Citations	34	43	370	519	-21%	-29%
Written Warnings	0					
Verbal Warnings	15				N/C	N/C
MINUTES BY ACTIVITY	This Month	This Month Last Year	YTD	Last YTD	Change By Month	Change YTD
Office	555	335	10,685	10,355	66%	3%
Admin(Non-Office)	925	465	10,495	9,480	99%	11%
Community	0				N/C	N/C
Training	0		115		N/C	N/C
Patrol	5,240	4,240	43,560	41,685	24%	4%



## ANIMAL CONTROL

The Animal Control Division is responsible for educating the public on safe and humane issues regarding animal treatment, enforcing all animal laws and ordinances, assisting the

public in resolving animal issues, and protecting the safety and welfare of the citizens and animals in this community.

Incidents	This Month	This Month Last Year	YTD	Last YTD	Change By Month	Change YTD
Barking Complaints	10	16	121	97	-38%	25%
Bite Reports	10	9	117	101	11%	16%
Door Hangers	53	37	399	353	43%	13%
Welfare Checks	92	101	1,194	833	-9%	43%
Advised of Rights	620	285	7,491	2,865	118%	161%
Incident Reports	7	6	61	60	17%	2%
Gone on Arrival	41	59	358	456	-31%	-21%
Complaints	624	598	7,102	6,613	4%	7%
Desk Complaints	1,430	839	16,594	9,443	70%	76%
Captured Dogs	100	115	1,478	1,321	-13%	12%
Captured Cats	51	10	239	120	410%	99%
Captured Wildlife	24	10	293	305	140%	-4%
Chemical Captures	0	13	24	70	-100%	-66%
Traps	10	8	174	202	25%	-14%
Deceased Animals	32	62	623	752	-48%	-17%
Assist J.P.D.	30	6	118	72	400%	64%
Assist C.S.O.	3	0	17	2	N/C	750%
Public Relations	720	403	8,960	5,530	79%	62%
CITATIONS ISSUED	72	105	1,144	525	-31%	118%
WARNINGS ISSUED	76	71	689	440	7%	57%
Physical Arrests	2	0	67	10	N/C	570%
City Warrants Served	33	3	284	29	1000%	879%
County Warrants Served	1	0	50	1	N/C	4900%
Felony Bench Warrants	0	0	10	0	N/C	N/C
Euthanized	75	68	875	632	10%	38%
Deceased Animals Landfill lbs.	3,880	2,540	42,480	40,592	53%	5%
Wildlife Euthanized	24	10	300	305	140%	-2%
Sent to Rescue Centers	4	1	34	122	300%	-72%
Adoptions	41	30	481	358	37%	34%
Miles Driven	5,791	7,381	76,853	82,260	-22%	-7%

## FLEET MAINTENANCE

The Fleet Maintenance is responsible for all of the police vehicle maintenance upkeep, cleanliness, and purchasing. In addition, this Division handles most of the purchasing of

equipment, supplies, and uniforms for all of the Police Department. (See the following page for details).

Repair Costs by Model Year	This Month	This Month Last Year	YTD	Last YTD	Change By Month	Change YTD
95-99	\$0.00	\$0.00	\$0.00	\$583.68	N/C	-100%
2000	\$0.00	\$0.00	\$292.92	\$550.38	N/C	-47%
2001	\$0.00	\$0.00	\$1,082.20	\$323.26	N/C	235%
2002	\$0.00	\$0.00	\$405.65	\$2,054.11	N/C	-80%
2003	\$90.00	\$0.00	\$90.00	\$577.11	N/C	-84%
2004	\$0.00	\$119.29	\$1,653.66	\$9,339.13	-100%	-82%
2005	\$109.53	\$1,817.39	\$9,667.28	\$10,805.60	-94%	-11%
2006	\$2,742.92	\$3,953.60	\$34,805.68	\$36,305.27	-31%	-4%
2007	\$1,131.68	\$1,443.43	\$16,728.37	\$13,104.88	-22%	28%
2008	\$833.97	\$0.00	\$2,646.00	\$1,408.42	N/C	88%
2009	\$39.33	\$11.23	\$1,487.46	\$1,002.42	N/C	N/C
2010	\$0.00	\$0.00	\$433.45	\$311.95	N/C	N/C
2011	\$729.28	n/a	\$810.55	n/a	N/C	N/C
Totals by Year Model						
<b>TOTALS</b>	<b>\$5,676.71</b>	<b>\$7,344.94</b>	<b>\$70,103.22</b>	<b>\$76,366.21</b>	<b>-23%</b>	<b>-8%</b>

Routine Preventative Maintenance by Model Year	This Month	This Month Last Year	YTD	Last YTD	Change By Month	Change YTD
95-99	\$0.00	\$0.00	\$78.00	\$73.50	N/C	6%
2000	\$0.00	\$0.00	\$40.00	\$29.00	N/C	38%
2001	\$825.60	\$50.24	\$1,020.40	\$110.24	1543%	826%
2002	\$0.00	\$0.00	\$50.30	\$92.50	N/C	-46%
2003	\$20.00	\$0.00	\$138.00	\$985.15	N/C	-86%
2004	\$40.00	\$100.50	\$2,000.80	\$5,577.93	-60%	-64%
2005	\$20.00	\$2,677.65	\$4,150.61	\$7,592.34	-99%	-45%
2006	\$1,933.80	\$2,672.91	\$17,494.02	\$18,519.93	-28%	-6%
2007	\$837.12	\$1,442.88	\$10,899.13	\$13,082.97	-42%	-17%
2008	\$60.00	\$60.00	\$2,705.23	\$2,656.38	0%	2%
2009	\$515.09	\$560.18	\$4,851.17	\$3,038.96	N/C	N/C
2010	\$0.00	\$0.00	\$2,142.69	\$2,022.50	N/C	N/C
2011	\$160.00	n/a	\$500.00	n/a	N/C	N/C
Totals by Year Model						
<b>TOTALS</b>	<b>\$4,411.61</b>	<b>\$7,564.36</b>	<b>\$46,070.35</b>	<b>\$53,781.40</b>	<b>-42%</b>	<b>-14%</b>

## RECORDS

The Records Division is responsible for providing administrative and clerical support to the department. Major responsibilities include entering the accident and incident reports and tickets into the records database management system, assisting the general

public for report requests, performing criminal backgrounds, serving as a switchboard at times, performing validations, and setting up and managing the payment plans out of court.

RECORDS	This Month	This Month Last Year	YTD	Last YTD	Change By Month	Change YTD
Incident/Arrest Reports Processed	1,202	1,129	14,584	13,532	6%	8%
Accident Reports Processed	210	227	2,309	2,547	-7%	-9%
Citations Processed	3,978	3,935	48,581	45,376	1%	7%
Warnings Processed	524	446	6,721	6,203	17%	8%
Backgrounds	19	10	192	181	90%	6%
Fingerprints	63	58	1,000	791	9%	26%
Photos	1	0	19	15	N/C	27%
Accident Requests	153	96	1,248	1,048	59%	19%
Accident Requests Online	6	175	1,336	1,795	-97%	-26%
<b>TOTALS</b>	<b>6,156</b>	<b>6,076</b>	<b>75,990</b>	<b>71,488</b>	<b>1%</b>	<b>6%</b>

**PROFESSIONAL STANDARDS**

The Office of Professional Standards, a unit within Administration, is charged with the compilation and updating of an extensive set of policies and procedures and providing a general operations guideline and code of conduct for officers to follow. In the event

that a member of the public does experience a negative interaction with an officer, mechanisms are in place for them to lodge a complaint. All complaints are reviewed and investigations completed in a timely manner.

Professional Standards	This Month	This Month Last Year	YTD	Last YTD	Change By Month	Change YTD
Opened (TOTAL)	11	5	50	65	120%	-23%
Closed	11	4	47	64	175%	-27%
Inquiries	9	4	40	61	125%	-34%
Formal Investigations	2	0	11	3	N/C	267%
Sustained	8	4	38	50	100%	-24%
Not-Sustained	0	0	3	4	N/C	-25%
Exonerated	2	0	2	2	N/C	0%
Unfounded	3	0	4	7	N/C	-43%

*\*\*\* End of the Report \*\*\**