
JPD Monthly Report

October 2010

Heather Clements,
Crime Analyst



Executive Summary

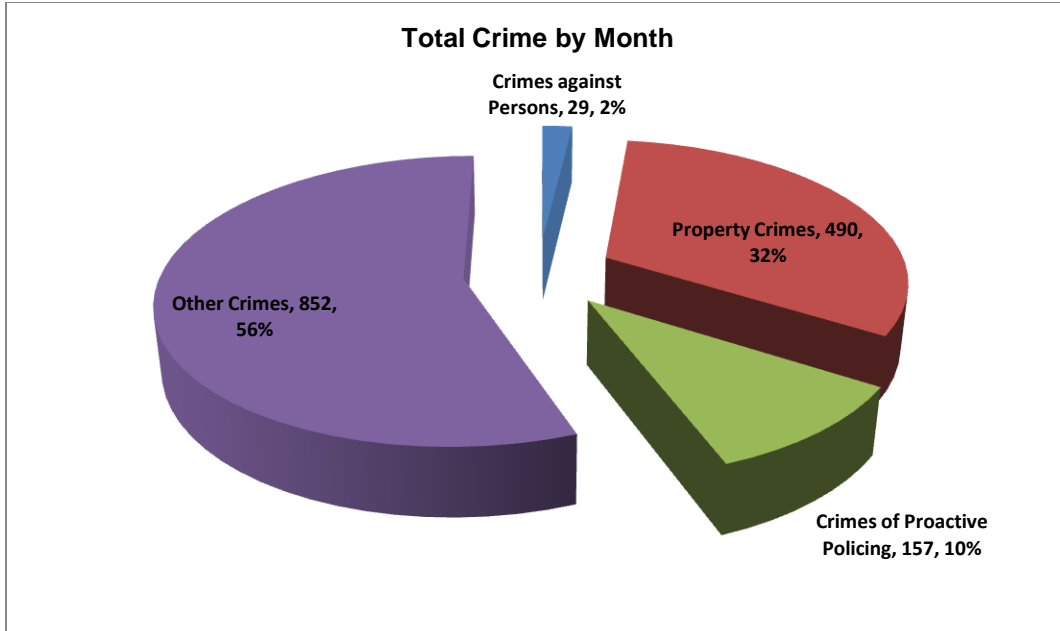
The purpose of the Jonesboro Police Department Monthly Report is to compile data into one integrated report for review, allowing for a seamless flow of information for better decision-making. After each department collates their monthly numbers and sends it to Crime Analysis, it is organized into sections of departmental data, analyzed and packaged, and finally disseminated to department heads, the Chief of Police, the City Mayor, and the City Council. Major sections include Crime Analysis, Emergency 911, Uniform Police Division, Prowl, Criminal Investigative Division, Warrants, Drug Task Force, Traffic, Parking Enforcement, Animal Control, Fleet Maintenance, Records, and Professional Standards.

Crime Analysis

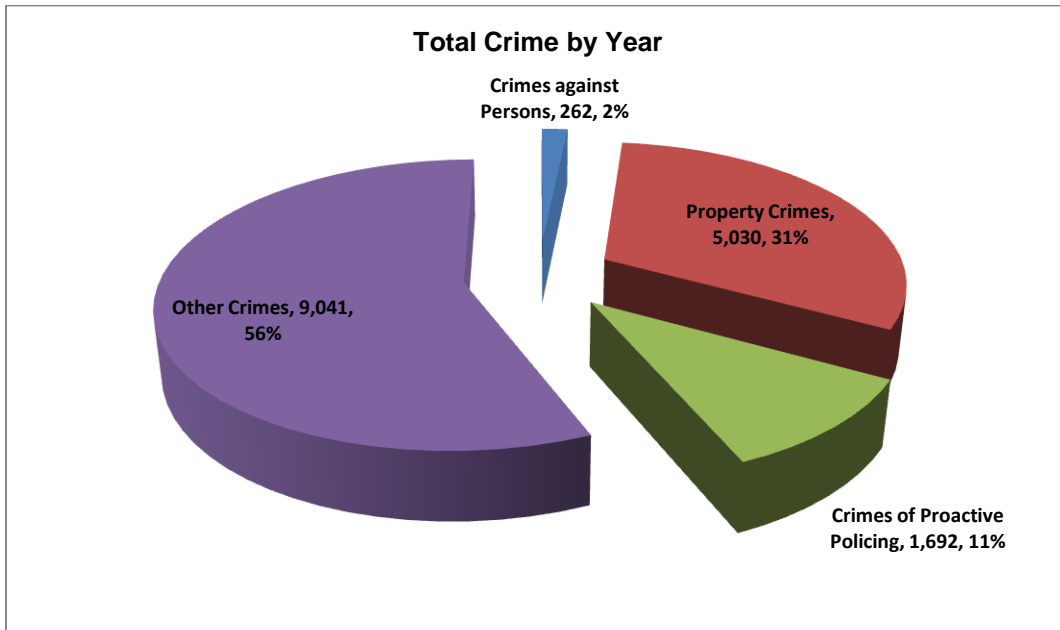
The Crime Analysis division consists of a Crime Analyst and a Crime Analyst Assistant. The Crime Analyst position is responsible for the analysis and dissemination of crime activity data and the collection and maintenance of crime intelligence information for the city of Jonesboro. Additionally, the Crime Analyst is charged with providing the department with current and accurate crime maps, presenting crime activity data to audiences of interest, and responding to requests for crime data from civilians and departmental staff. Data exported from this division is used by field agents for more effective, efficient policing, administration for improved staffing decisions, and the Mayor's office for community decision making and enhanced public relations. This section is broken down into total crime, crimes against persons, property crimes, crimes of proactive policing, other crimes, and arrest demographics.

Total Crime

The crime activity for this month is at a total of 1,528 offenses, up from 1,366 offenses last October, a 12% increase. Other Crimes absorb the majority of this month's crime activity at 56% ($n = 852$). Property crimes fall in second place with 32% ($n = 490$). Following in third and fourth places are crimes of proactive policing at 10% ($n = 157$) and crimes against persons at 2% ($n = 29$).

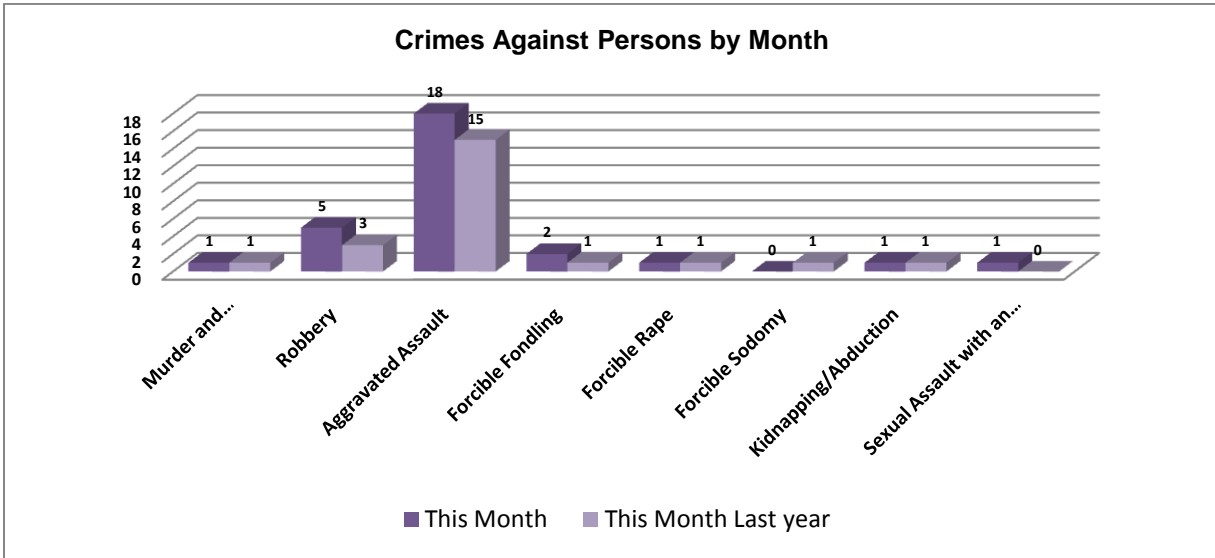


Year to date data includes January through October, of which there is a total of 16,025 offenses, up from 13,294 last October, a 21% increase. Again, other crimes has the highest percentage to total crimes at 56% ($n = 9,041$). Similar to this month’s data, property crimes take second place at 31% ($n = 5,030$). Following are the crimes of proactive policing at 11% ($n = 1,692$) and crimes against persons at 2% ($n = 262$).

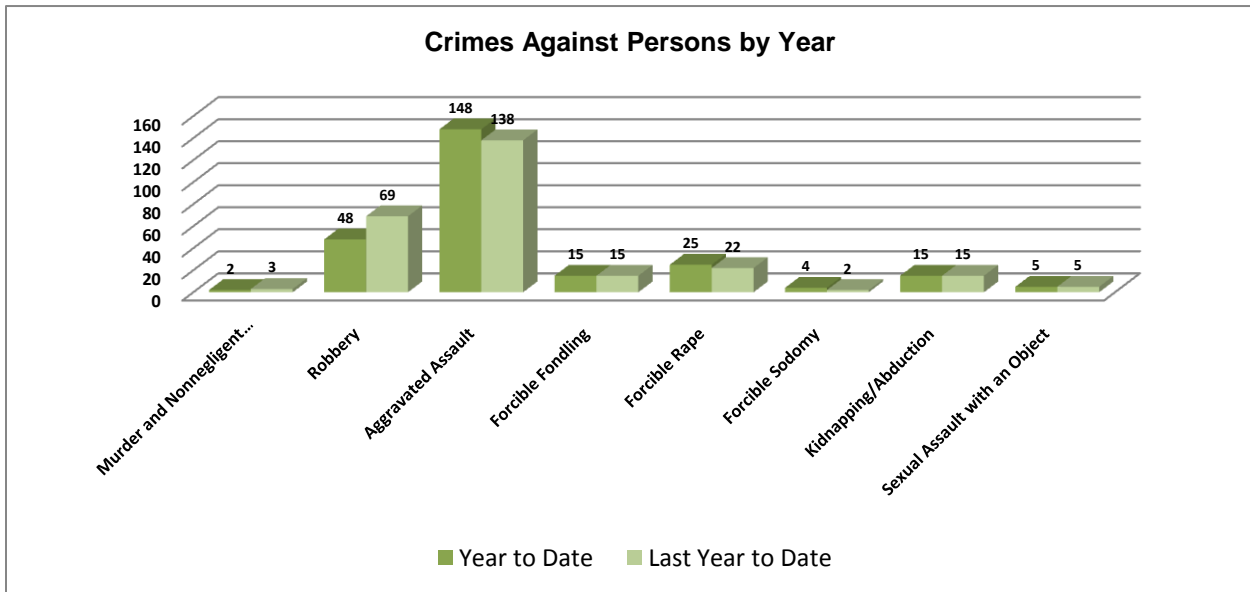


Crimes against Persons

There are 8 crimes that make up this section. There were a total of 29 offenses in this area this month, up from 23 last October, a 21% increase. The following chart demonstrates this month's activity compared to October of last year's activity in all 8 areas. The robberies are higher, up to 5 from 3, a 40% increase. The aggravated assaults are also higher, up 16%.



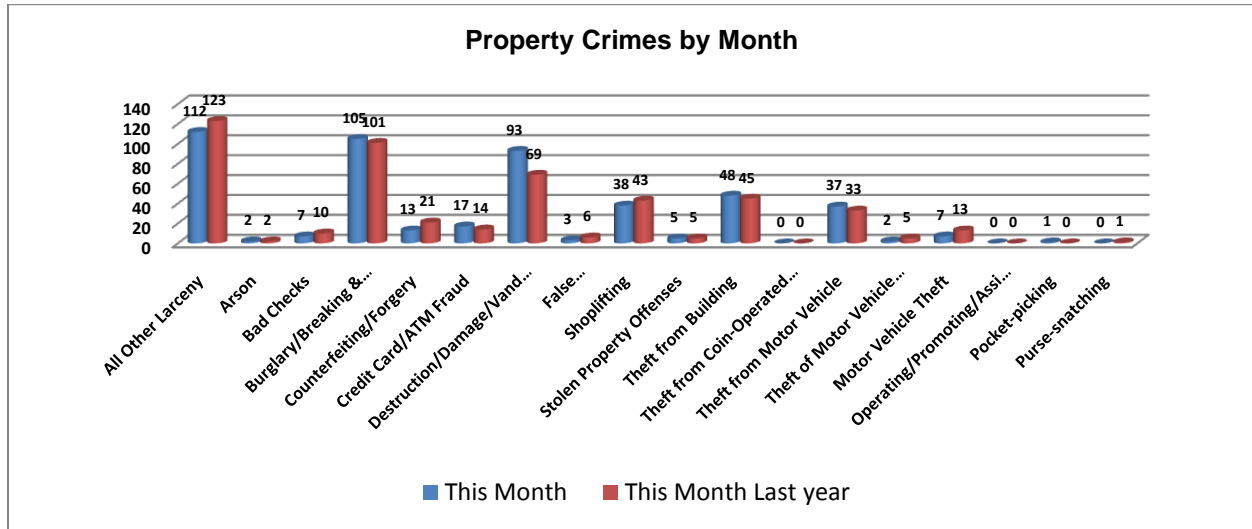
Below is a bar graph indicating the year to date data for crimes against persons. Total number of year to date crimes against persons is 262, down from 269 last October, an insignificant decrease. Robberies are down 44% from this time last year. The aggravated assaults are up by 6%.



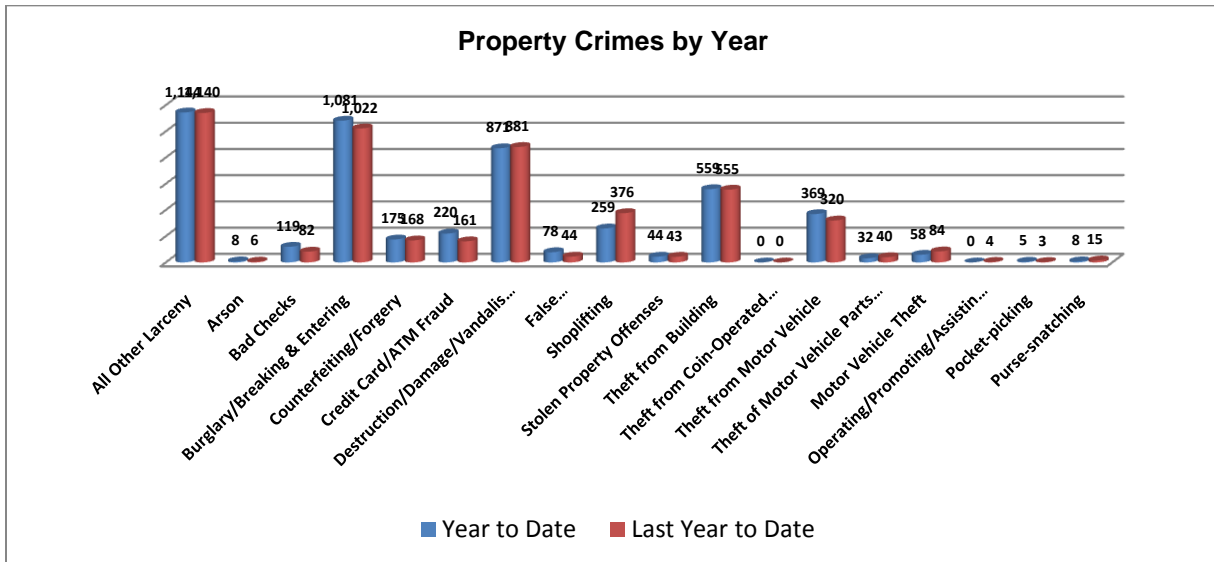
*Arkansas State University had 1 murder on campus in April, but this statistic is reported by ASU and not the City of Jonesboro.

Property Crimes

This section displays the criminal activity for 18 crimes, all against property. This month, there were a total of 490 property crimes, an insignificant decrease from 491 last October. Shoplifting is down 13% from last October, while destruction/damage/vandalism of property is up, a 26% increase. Significant is a change in the counterfeiting/forgery, down to 13 from 21, a 38% decrease.

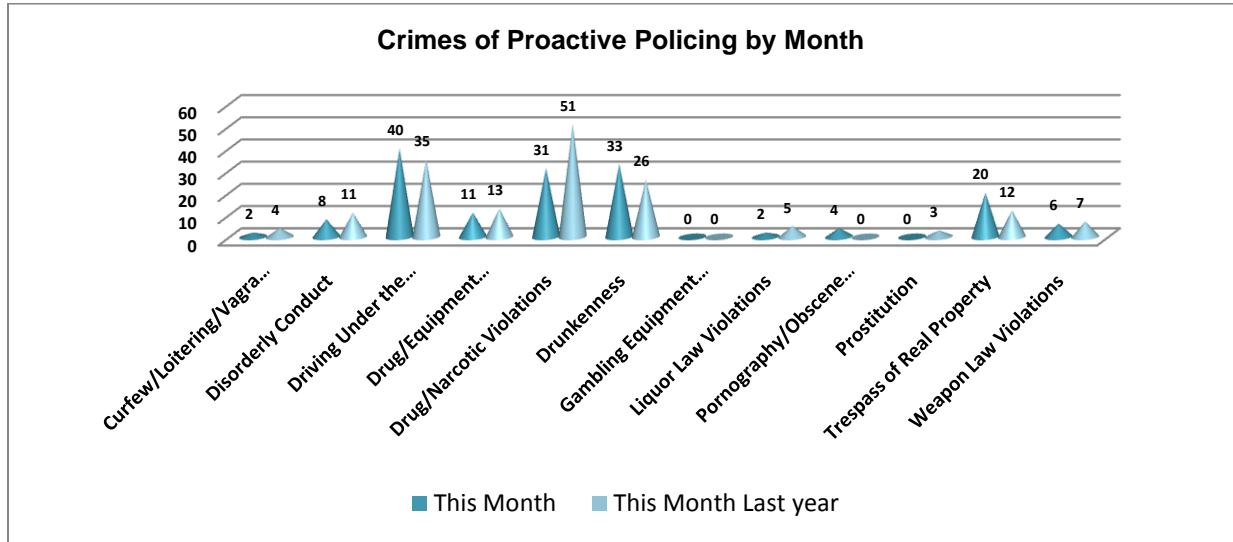


To date this year, 5,030 property offenses have occurred, up from 4,944 last year at this same time, which is virtually no significant change. Whereas shoplifting is down 31%, credit card/ATM fraud is up 37% and bad checks are up 45% and while motor vehicle theft decreased by 31%, the theft from motor vehicle increased by 15%.

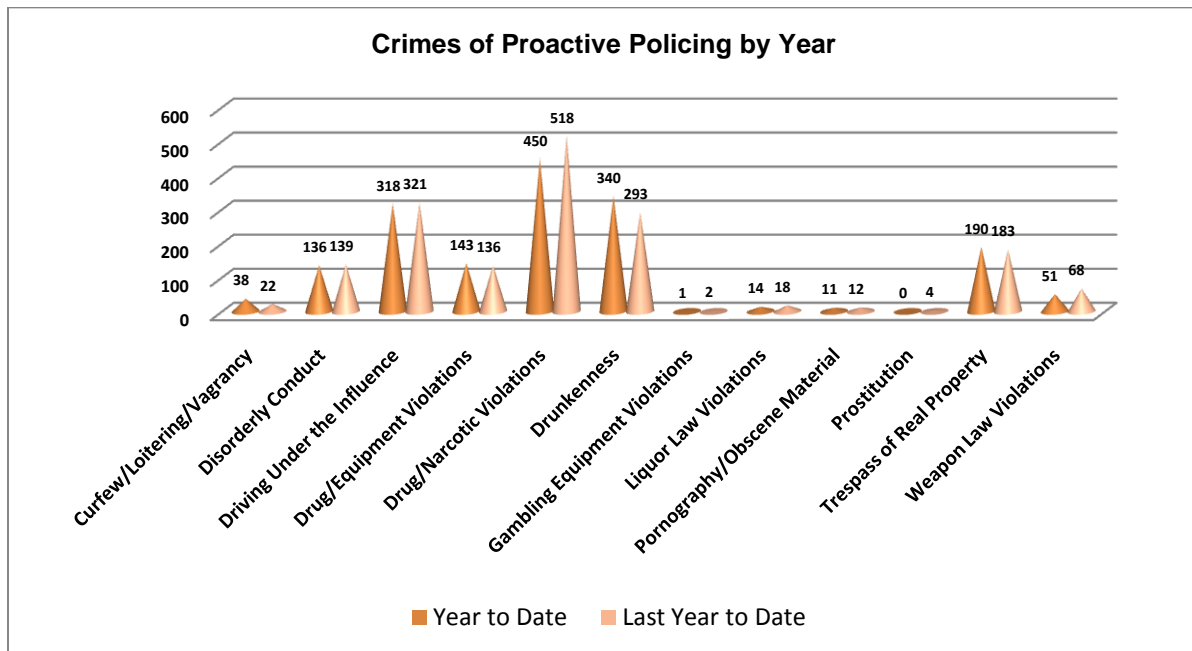


Crimes of Proactive Policing

Crimes of proactive policing are those crimes that result from police officers actively policing the streets to combat certain types of street crime. Twelve crimes fall under this category. A total of 157 offenses have occurred this month, a 6% decrease from last October ($n = 167$). Significant changes this month include a drop in drug/narcotics violations, 39% down. Trespass of real property is up by 40% and drunkenness is up by 27%. DUI are slightly up, a 14% increase.

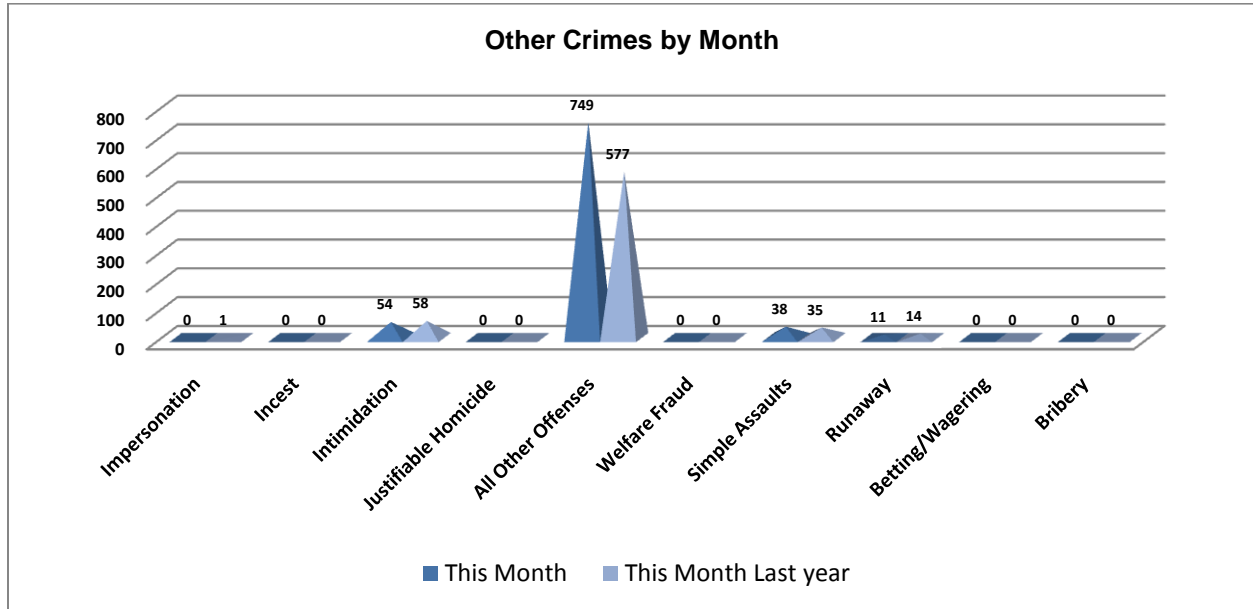


To date for the year, there have been 1,692 crimes of proactive policing, down from 1,716 last year. Drug/narcotic violations are down 13%. Drunkenness is up 16% and curfew/loitering/vagrancy is up 45%.

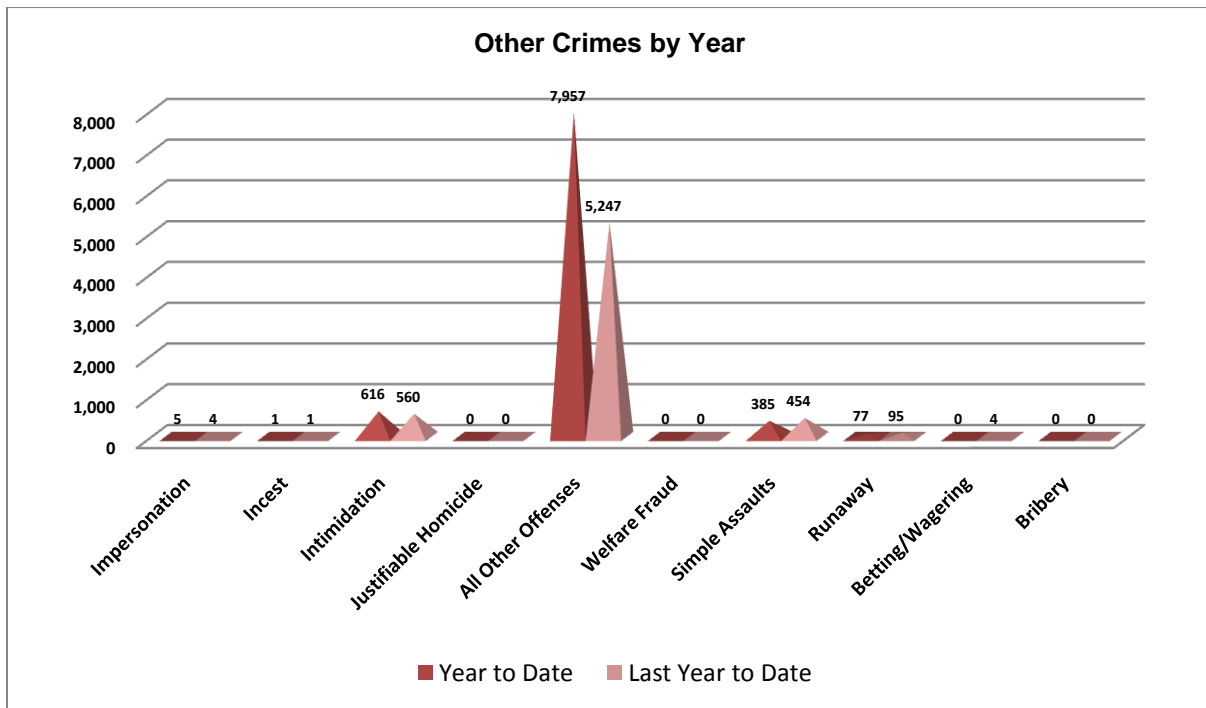


Other Crimes

There are 10 crimes that fall into the other crimes category. This month, there have been a total of 852 other crimes up from 685 last October, a 24% increase. Significantly higher than last October are the all other offenses, up 30%.

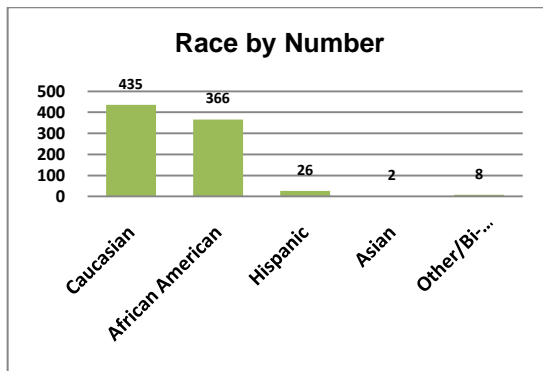
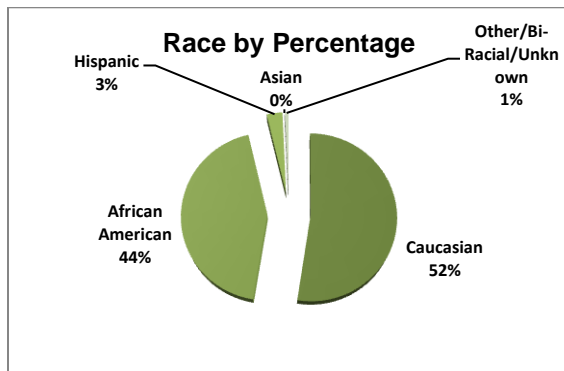
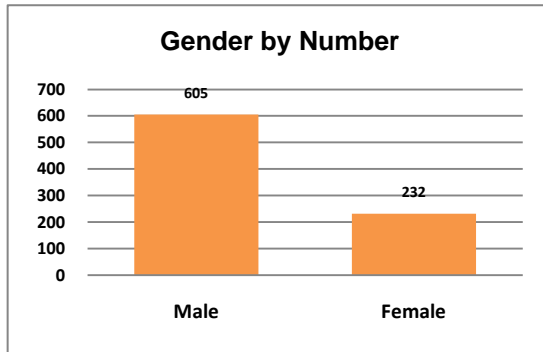
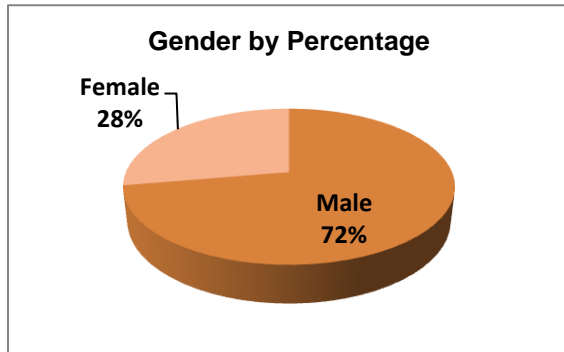


To date this year, there have been 9,041 other crimes, up from 6,365 last October, a 42% increase. Similar to above, all other offenses are up, a 52% increase.

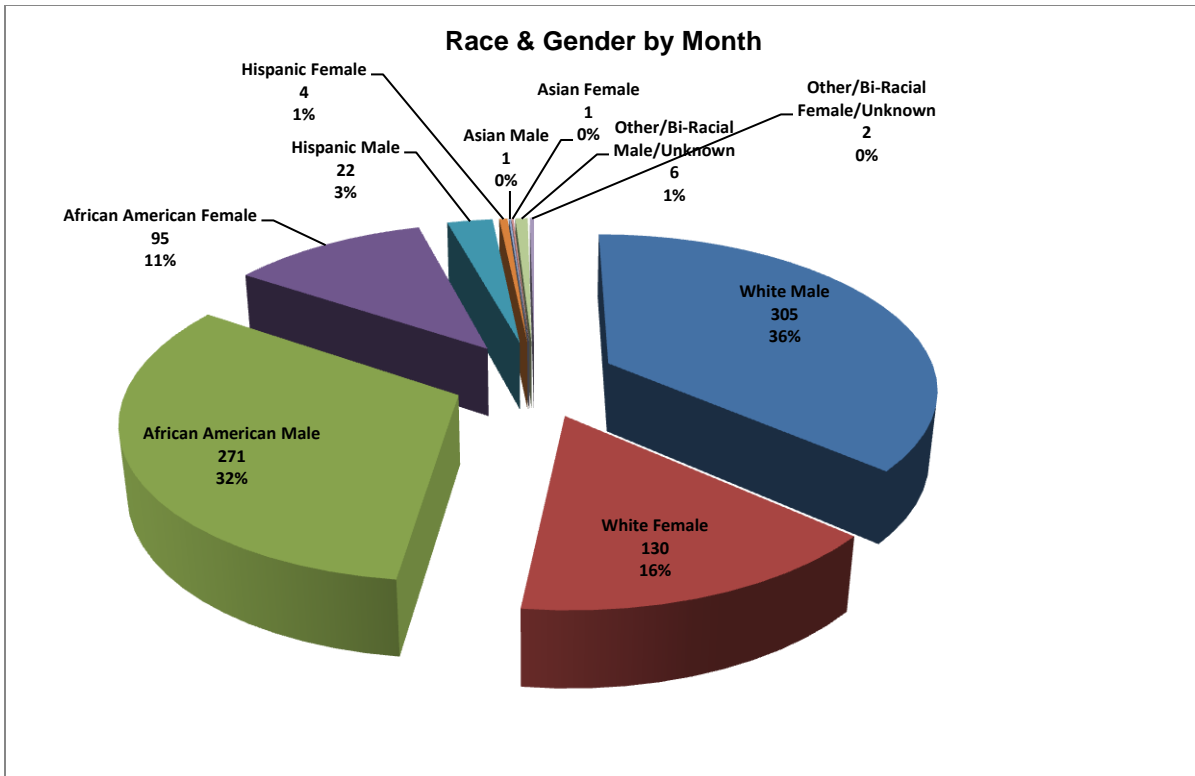


Arrest Demographics

This section will break down race and gender for the 837 arrests this month. The majority of offenders have been male ($n=605$), as opposed to female ($n=232$) and Caucasian ($n=435$) and African American ($n=366$) as opposed to Hispanic ($n=26$), Asian ($n=2$), or other/unknown/bi-racial ($n=8$).



Caucasian males make up the majority of offenders for the month of October, totaling 36% ($n = 305$). African American males account for 32% ($n = 271$) of the offenders this month. Caucasian females make up 16% ($n = 130$) and African American females make up 11% ($n = 95$). Hispanic males make up 3% ($n = 22$), while Hispanic females make up 1% ($n = 4$). The other/bi-racial males make up yet another 1% of arrestees this month ($n=6$). There were 2 other/bi-racial females arrestees and 1 Asian male and 1 Asian female, insignificant percentage of the total of arrestees. This distribution can be reviewed in the pie chart below (see page 9).



*Although the chart indicates a 0% for Asian Male (n=1) and Asian Female (n=1), the percentage is so small that excel rounds it to 0%.

Emergency 911

Also known as Public Safety Answering Point (PSAP), the Emergency 911 Division is responsible for answering all calls from public for emergency assistance, accessing the needed information to best assist, and then assigning the most efficient and effective emergency response. In addition, this division is responsible for setting priority call dispatching to field units including Police, Fire, and EMS. Emergency 911 also maintains all records for radio logs, calls for service, and other emergency service data collections.

Calls by Type	This Month	This Month Last Year	YTD	Last YTD	Change By Month	Change YTD
Land Line	913	874	8,868	9,807	4%	-10%
Cell Phone	3,457	2,979	33,710	33,933	16%	-1%
Admin Lines	16,655	15,336	156,772	168,110	9%	-7%
TOTALS	21,025	19,189	199,350	211,850	10%	-6%

Calls by Agency	This Month	This Month Last Year	YTD	Last YTD	Change By Month	Change YTD
Jonesboro PD Calls	6,360	5,262	61,694	70,333	21%	-12%
Craighead Cty Sheriff	1,157	1,037	10,665	12,621	12%	-15%
Jonesboro Fire Dpt - dispatch	225	305	1,669	1,807	-26%	-8%
Jonesboro Fire Dpt - Med Asst	113	140	1,165	1,975	-19%	-41%
Craighead Cty - Fire	191	25	744	552	664%	35%
Craighead Cty - 1st Responder	100	98	763	813	2%	-6%
Emerson Ambulance	238	249	2,442	2,269	-4%	8%
Medic One	301	287	2,928	2,966	5%	-1%
Air Evac	2	2	12	13	0%	-8%
Coroner	4	3	27	22	33%	23%
ARK State Police	21	20	156	114	5%	37%
Jonesboro Animal Control	72	89	709	331	-19%	114%
Wreckers Called	161	238	1,713	1,976	-32%	-13%
TOTALS	8,945	7,755	84,687	95,792	15%	-12%

Calls by Municipality	This Month	This Month Last Year	YTD	Last YTD	Change By Month	Change YTD
Bay PD	64	190	1021	1569	-66%	-35%
Bono PD	206	179	1981	2227	15%	-11%
Brookland PD	178	201	2010	2414	-11%	-17%
Caraway PD	88	96	1010	813	-8%	24%
Cash PD	36	51	520	555	-29%	-6%
Egypt PD	28	16	236	245	75%	-4%
Lake City PD	130	109	1233	1118	19%	10%
Monette PD	153	161	1420	1604	-5%	-11%
TOTALS	883	1,003	9,431	10,545	-12%	-11%

Uniform Patrol Division

The UPD is responsible for responding to calls into the Emergency – 911 Division by civilians and are normally the first responders. Jonesboro is divided into 6 patrol districts. Officers from UPD are assigned to a district and work the same district every shift. In addition, when a Traffic Officer is not available, a UPD Officer will respond to traffic accidents and assist in directing traffic when necessary.

Incidents	This Month	This Month Last Year	YTD	Last YTD	Change By Month	Change YTD
Street Accidents	93	109	1,046	1,254	-15%	-17%
Private Property Accidents	43	42	496	532	2%	-7%
Traffic Citations	743	697	7,117	5,858	7%	21%
DWI	30	31	213	270	-3%	-21%
Mis. Arrests	3,114	1,918	17,062	13,810	62%	24%
Felony Arrests	143	130	1,423	1,346	10%	6%
Public Intoxication Arrests	12	13	89	111	-8%	-20%
Calls For Service	7,832	6,503	72,172	64,098	20%	13%
Alarms	210	213	2,267	2,254	-1%	1%
Parking Citations	6	9	16	36	-33%	-56%
Written Warnings	794	428	8,385	4,328	86%	94%
TOTALS	13,020	10,093	110,286	93,897	29%	17%
Patrol Miles	63,863	61,872	620,176	560,375	3%	11%
Hours Worked	10,874	9,751	99,710	87,198	12%	14%

Prowl

The Prowl unit is a uniformed street crimes unit specializing in criminal patrol, narcotics enforcement, gang investigation, and prostitution activity. The unit conducts directed patrols, investigates citizen complaints of street-level criminal activity, and directly assists the 2nd Judicial Drug Task Force. PROWL also assists any division within the Jonesboro Police Department at any time when needed.

Incidents	This Month	This Month Last Year	YTD	Last YTD	Change By Month	Change YTD
Street Accidents	0	0	0	1	N/C	-100%
Private Property Accidents	0	0	1	0	N/C	N/C
Traffic Citations	27	19	310	213	42%	46%
DWI	0	0	1	1	N/C	0%
Mis. Arrests	64	74	915	1,058	-14%	-14%
Felony Arrests	26	27	282	387	-4%	-27%
Drug Arrests	21	18	278	348	17%	-20%
Public Intoxication Arrests	0	0	0	0	N/C	N/C
Calls For Service	71	93	901	699	-24%	29%
Alarms	0	0	0	0	N/C	N/C
Parking Citations	0	0	0	0	N/C	N/C
Written Warnings	11	18	220	199	-39%	11%
Assists	0	0	0	0	N/C	N/C
TOTALS	220	249	2,908	2,906	-12%	0%
Value of Drugs Seized	\$800	\$21,060	\$69,238	\$153,976	-96%	-55%
Value of Assets Seized	517	300	58,150	95,908	72%	-39%
Patrol Miles	4,200	5,400	50,300	52,885	-22%	-5%

Criminal Investigative Division

The CID is responsible for conducting follow-up investigations into criminal acts reported to the Jonesboro Police Department. The primary goal is to collect and present evidence that conclusively leads to a successful arrest. Additionally, CID is charged with clearing additional crimes, recovering stolen property, preventing additional crimes, and gathering intelligence information.

Investigations	This Month	This Month Last Year	YTD	Last YTD	Change By Month	Change YTD
Criminal Investigations Assigned	86	74	898	947	16%	-5%
Criminal Investigations Closed	68	58	845	798	17%	6%
Cleared by Arrests	32	32	473	416	0%	14%
Unfounded	11	11	89	109	0%	-18%
Exceptionally Cleared	15	7	144	169	114%	-15%
Filed With Prosecutors Office	7	0	70	38	N/C	84%
TOTALS	219	182	2519	2477	20%	2%

Crimes Against Persons	This Month	This Month Last Year	YTD	Last YTD	Change By Month	Change YTD
Criminal Investigations Assigned	20	20	184	219	0%	-16%
Criminal Investigations Closed	16	20	196	222	-20%	-12%
Cleared by Arrests	6	13	126	138	-54%	-9%
Unfounded	3	4	10	28	-25%	-64%
Exceptionally Cleared	7	3	45	49	133%	-8%
Filed With Prosecutors Office	0	0	15	7	N/C	114%
TOTALS	52	60	576	663	-13%	-13%

Property Crimes	This Month	This Month Last Year	YTD	Last YTD	Change By Month	Change YTD
Criminal Investigations Assigned	60	46	631	621	30%	2%
Criminal Investigations Closed	44	23	515	452	91%	14%
Cleared by Arrests	23	17	317	260	35%	22%
Unfounded	8	4	63	65	100%	-3%
Exceptionally Cleared	8	2	92	104	300%	-12%
Filed With Prosecutors Office	5	0	43	23	N/C	87%
TOTALS	148	92	1661	1525	61%	9%

Crimes Against Children	This Month	This Month Last Year	YTD	Last YTD	Change By Month	Change YTD
Criminal Investigations Assigned	5	4	56	54	25%	4%
Criminal Investigations Closed	5	7	65	51	-29%	27%
Cleared by Arrests	3	2	30	15	50%	100%
Unfounded	0	3	16	17	-100%	-6%
Exceptionally Cleared	0	2	7	9	-100%	-22%
Filed With Prosecutors Office	2	0	4	0	N/C	N/C

Warrants

The Warrants Division is responsible for serving warrants, criminal summonses, and subpoenas that are issued by the District Court. On city court days, the Warrants Division provides a bailiff for court and a transport officer. In addition, this Division is responsible for transporting wanted persons arrested in other jurisdictions back to Jonesboro. The STEP program operates within this division and is a grant-funded operation in which officers can get paid overtime to enforce the safety belt law.

Arrests	This Month	This Month Last Year	YTD	Last YTD	Change By Month	Change YTD
Misdemeanor	1414	563	11903	7126	151%	67%
Felony	0	3	6	8	-100%	-25%
Total Arrests	1414	566	11909	7134	150%	67%

Warrants by Activity	This Month	This Month Last Year	YTD	Last YTD	Change By Month	Change YTD
Subpoenas	325	713	3910	5077	-54%	-23%
Commitments	2	2	37	34	0%	9%
Traffic Citations	0	2	16	4	-100%	300%
Complaints	0	0	0	0	N/C	N/C
Assist	0	0	0	0	N/C	N/C
Alarms	0	0	0	0	N/C	N/C

Hours by Activity	This Month	This Month Last Year	YTD	Last YTD	Change By Month	Change YTD
SI Criminal	292	238.17	2260.87	1633.29	23%	38%
Court	116	111.17	1257.08	933.67	4%	35%
Prisoner Transport	17.5	36.67	291.17	821.67	-52%	-65%

Hours Worked	This Month	This Month Last Year	YTD	Last YTD	Change By Month	Change YTD
Regular Hours Worked	678	607	6434.5	5471.5	12%	18%
Overtime Hours Worked	5.5	14	60.5	30.25	-61%	100%
TOTAL Hours Worked	683.5	621	6495	5501.75	10%	18%

Mileage	This Month	This Month Last Year	YTD	Last YTD	Change By Month	Change YTD
Total Mileage	2937	2013	30650	22247	46%	38%

STEP	This Month	This Month Last Year	YTD	Last YTD	Change By Month	Change YTD
DWI Arrest	1	0	11	0	N/C	N/C
DUI Arrest	0	0	0	0	N/C	N/C
Traffic Citations	449	103	1728	1167	336%	48%
Felony Arrests	0	0	2	1	N/C	100%
Drug Arrests	0	0	0	0	N/C	N/C
Hours Worked	261	96.5	1290	2060.75	170%	-37%
Miles Driven	252	609	8202	7576	-59%	8%

Drug Task Force

The DTF is responsible for investigating major drug traffickers in the area, including all types of illegal drugs. They work closely with local, state, and federal agencies to eradicate drugs from the community.

INVESTIGATIONS	This Month	This Month Last Year	YTD	Last YTD	Change By Month	Change YTD
Opened	19	29	274	290	-34%	-6%
Closed	16	25	242	268	-36%	-10%
TOTAL	19	31	312	326	-39%	-4%

With Nexus to Jonesboro	This Month	This Month Last Year	YTD	Last YTD	Change By Month	Change YTD
Opened	13	29	240	307	-55%	-22%
Closed		0		0	N/C	N/C
TOTAL	13	29	240	307	-55%	-22%

Outside Jonesboro (No Known Nexus)	This Month	This Month Last Year	YTD	Last YTD	Change By Month	Change YTD
Opened	1	2	16	17	-50%	-6%
Closed	0	0		0	N/C	N/C
TOTAL	1	2	16	17	-50%	-6%

ASSISTANCE RENDERED	This Month	This Month Last Year	YTD	Last YTD	Change By Month	Change YTD
Assist to Outside Agencies	2	10	29	44	-80%	-34%
Assist to Jonesboro UPD/CID	9	15	150	177	-40%	-15%

ARRESTS	This Month	This Month Last Year	YTD	Last YTD	Change By Month	Change YTD
Miscellaneous	0	15	54	102	-100%	-47%
Felony	24	49	355	359	-51%	-1%
Marijuana	1	3	73	60	-67%	22%
Cocaine	1	2	17	16	-50%	6%
Crack Cocaine	1	4	40	51	-75%	-22%
Methamphetamine/ICE	3	7	84	69	-57%	22%
LSD	0	0	0	0	N/C	N/C
Extasy (MDMA or Other Designer Drug)	0	1	5	8	-100%	-38%
Perscription	0	1	18	32	-100%	-44%
Opiates (Heroine,Opium)	0	0	0	9	N/C	-100%
Labs	5	2	24	25	150%	-4%
All Other Drug Offenses	0	0	0	1	N/C	-100%

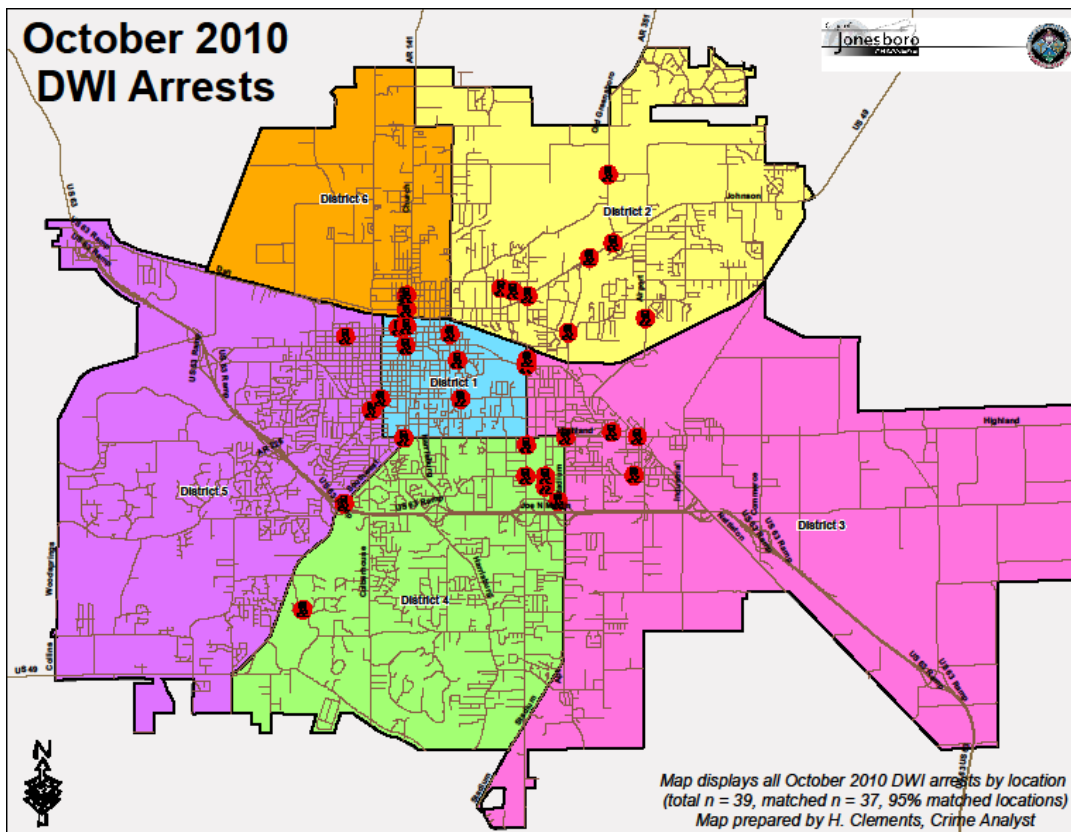
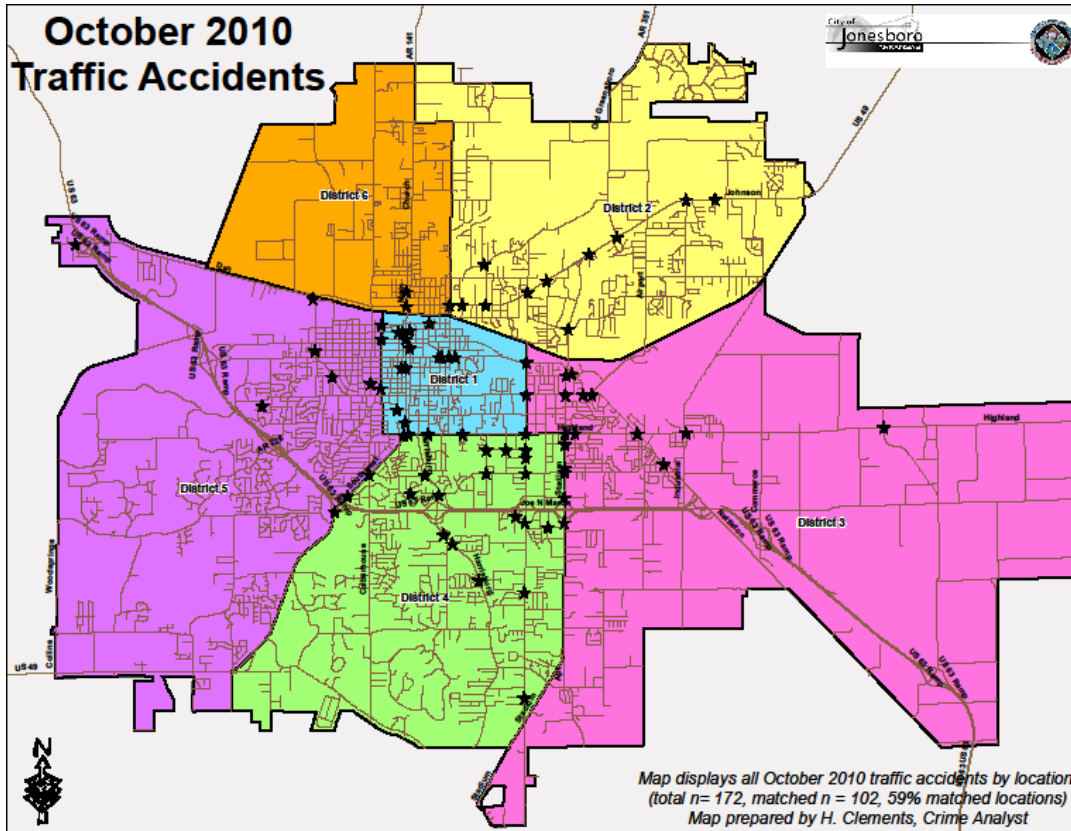
ASSET FORFEITURE	This Month	This Month Last Year	YTD	Last YTD	Change By Month	Change YTD
Vehicles Seized(No.)	0	0	5	5	N/C	0%
Value of Assets Seized(Includes Value of vehicles)	\$0	\$0	\$44,157	\$94,802	N/C	-53%
Asset Value Awarded to Jonesboro PD (State)		\$0	\$0	\$0	N/C	N/C
Asset Value Awarded to Jonesboro PD (Federal)		\$0	\$0	\$0	N/C	N/C
Asset Value Awarded to Jonesboro PD (Total)		\$0	\$0	\$0	N/C	N/C

ARRESTS DEMOGRAPHY	This Month	This Month Last Year	YTD	Last YTD	Change By Month	Change YTD
White	11	21	134	172	-48%	-22%
African American	3	8	73	101	-63%	-28%
Latino	0	2	28	19	-100%	47%
Asain	0	0	1	0	N/C	N/C
Other/Bi-Racial	0	0	0	0	N/C	N/C
Male	10	26	178	206	-62%	-14%
Female	4	4	43	62	0%	-31%
White Male	7	16	100	113	-56%	-12%
White Female	4	5	37	48	-20%	-23%
African American Male	3	8	72	82	-63%	-12%
African American Female	0	0	3	18	N/C	-83%
Latino Male	0	2	23	16	-100%	44%
Latino Female	0	0	3	3	N/C	0%
Asain Male	0	0	1	0	N/C	N/C
Asain Female	0	0	0	0	N/C	N/C
Other/Bi-Racial Male	0	0	0	0	N/C	N/C
Other/Bi-Racial Female	0	0	0	0	N/C	N/C

Traffic

Comprised of three motor units and three Chargers, the Traffic Enforcement Unit responds to traffic accidents and provides increased enforcement in particularly challenging areas. This unit also provides extra coverage for specific congestion problems and special events in the community. Last, they work details targeting specific issues, such as DWI enforcement and traffic safety checkpoints.

Incidents	This Month	This Month Last Year	YTD	Last YTD	Change By Month	Change YTD
Street Accidents	158	112	1297	1276	41%	2%
Private Property Accidents	32	28	368	402	14%	-8%
Traffic Citations	200	165	2404	2756	21%	-13%
DWI	3	1	30	33	200%	-9%
Mis. Arrests	31	17	212	249	82%	-15%
Felony Arrests	2	1	38	13	100%	192%
Drug Arrests	0	0	0	0	N/C	N/C
Public Intoxication Arrests	0	0	2	0	N/C	N/C
Calls For Service	294	155	2702	2369	90%	14%
Alarms	1	0	16	20	N/C	-20%
Parking Citations	0	0	0	27	N/C	-100%
Written Warnings	130	6	1085	44	2067%	2366%
TOTALS	851	485	8154	7189	75%	13%
Value of Asstes Seized	\$0	\$0	\$0	\$0	N/C	N/C
Patrol Miles	5,028	3,265	52,518	52,046	54%	1%
Hours Worked	767	544.5	7754.5	8073.5	41%	-4%



Parking Enforcement

The Parking Enforcement Division is responsible for enforcing parking laws in the downtown area. This service provides a safe and convenient parking situation for the public.

CITATIONS ISSUED	This Month	This Month Last Year	YTD	Last YTD	Change By Month	Change YTD
Citations	38	43	476	814	-12%	-42%
Verbal Warnings	0	0	0	0	N/C	N/C

MINUTES BY ACTIVITY	This Month	This Month Last Year	YTD	Last YTD	Change By Month	Change YTD
Office	330	880	10,020	15,455	-63%	-35%
Admin(Non-Office)	495	1,135	9,015	8,615	-56%	5%
Community	0	0	0	300	N/C	-100%
Training	0	0	0	0	N/C	N/C
Patrol	3,735	4,855	37,445	46,570	-23%	-20%

Animal Control

The Animal Control Division is responsible for educating the public on safe and humane issues regarding animal treatment, enforcing all animal laws and ordinances, assisting the public in resolving animal issues, and protecting the safety and welfare of the citizens and animals in this community.

Incidents	This Month	This Month Last Year	YTD	Last YTD	Change By Month	Change YTD
Barking Complaints	15	18	81	84	-17%	-4%
Bite Reports	11	22	92	111	-50%	-17%
Door Hangers	38	36	316	247	6%	28%
Welfare Checks	63	54	732	620	17%	18%
Advised of Rights	289	201	2,580	2,079	44%	24%
Incident Reports	3	6	54	67	-50%	-19%
Gone on Arrival	41	83	397	570	-51%	-30%
Complaints	573	652	6,015	5,685	-12%	6%
Desk Complaints	872	864	8,604	7,359	1%	17%
Captured Dogs	120	104	1,206	1,075	15%	12%
Captured Cats	7	31	110	131	-77%	-16%
Captured Wildlife	20	43	295	235	-53%	26%
Chemical Captures	6	9	57	80	-33%	-29%
Traps	15	29	194	191	-48%	2%
Deceased Animals	86	100	690	833	-14%	-17%
Assist J.P.D.	7	7	66	47	0%	40%
Assist C.S.O.	0	2	2	8	-100%	-75%
Public Relations	417	377	5,127	2,091	11%	145%
CITATIONS ISSUED	52	31	420	229	68%	83%
WARNINGS ISSUED	31	54	369	254	-43%	45%
Physical Arrests	0	0	10	11	N/C	-9%
City Warrants Served	4	0	26	14	N/C	86%
County Warrants Served	1	0	1	0	N/C	N/C
Euthanized	50	104	564	663	-52%	-15%
Euthanized for Humane Society	0	0	0	72	N/C	-100%
Deceased Animals Landfill lbs.	3,980	4,040	37,420	42,640	-1%	-12%
Wildlife Euthanized	20	43	295	235	-53%	26%
Sent to Rescue Centers	0	16	121	98	-100%	23%
Adoptions	40	25	328	205	60%	60%
Miles Driven	7,773	9,702	74,879	86,347	-20%	-13%

Fleet Maintenance

The Fleet Maintenance is responsible for all of the police vehicle maintenance upkeep, cleanliness, and purchasing. In addition, this Division handles most of the purchasing of equipment, supplies, and uniforms for all of the Police Department.

Repair Costs by Model Year	This Month	This Month Last Year	YTD	Last YTD	Change By Month	Change YTD
95-99	\$0.00	\$0.00	\$583.68	\$1,155.90	N/C	-50%
2000	\$269.92	\$11.23	\$550.38	\$2,324.28	2304%	-76%
2001	\$0.00	\$0.00	\$323.26	\$427.80	N/C	-24%
2002	\$0.00	\$0.00	\$2,054.11	\$0.00	N/C	N/C
2003	\$0.00	\$0.00	\$577.11	\$535.11	N/C	8%
2004	\$990.19	\$373.48	\$9,219.84	\$6,021.39	165%	53%
2005	\$764.67	\$956.70	\$8,988.21	\$7,303.93	-20%	23%
2006	\$2,173.53	\$1,138.70	\$32,351.67	\$14,735.71	91%	120%
2007	\$1,009.80	\$247.91	\$11,661.45	\$4,216.16	307%	177%
2008	\$11.23	\$3,686.69	\$1,408.42	\$3,890.13	-100%	-64%
2009	\$38.96	\$37.80	\$991.19	\$6,175.71	N/C	N/C
2010	\$311.95	n/a	\$311.95	n/a	N/C	N/C
TOTALS	\$5,570.25	\$6,452.51	\$69,021.27	\$46,786.12	-14%	48%

Routine Preventative Maintenance by Model Year	This Month	This Month Last Year	YTD	Last YTD	Change By Month	Change YTD
95-99	\$0.00	\$0.00	\$73.50	\$188.30	N/C	-61%
2000	\$0.00	\$25.00	\$29.00	\$249.30	-100%	-88%
2001	\$0.00	\$0.00	\$60.00	\$1,221.96	N/C	-95%
2002	\$0.00	\$0.00	\$92.50	\$0.00	N/C	N/C
2003	\$20.00	\$40.00	\$985.15	\$973.50	-50%	1%
2004	\$1,146.36	\$135.00	\$5,477.43	\$4,022.92	749%	36%
2005	\$654.12	\$703.08	\$4,914.69	\$6,632.59	-7%	-26%
2006	\$1,939.22	\$1,223.40	\$15,847.02	\$13,954.65	59%	14%
2007	\$1,718.15	\$1,408.46	\$11,640.09	\$10,133.41	22%	15%
2008	\$20.00	\$695.38	\$2,596.38	\$1,825.92	-97%	42%
2009	\$240.89	\$832.26	\$2,478.78	\$3,744.27	N/C	N/C
2010	\$253.10	n/a	\$2,022.50	n/a	N/C	N/C
TOTALS	\$5,991.84	\$5,062.58	\$46,217.04	\$42,946.82	18%	8%

Records

The Records Division is responsible for providing administrative and clerical support to the department. Major responsibilities include entering the accident and incident reports and tickets into the records database management system, assisting the general public for report requests, performing criminal backgrounds, serving as a switchboard at times, performing validations, and setting up and managing the payment plans out of court.

RECORDS	This Month	This Month Last Year	YTD	Last YTD	Change By Month	Change YTD
Incident/Arrest Reports Processed	1,243	1,157	12,403	10,784	7%	15%
Accident Reports Processed	253	267	2,320	2,285	-5%	2%
Citations Processed	4,487	3,045	41,441	34,407	47%	20%
Warnings Processed	517	230	5,757	3,012	125%	91%
Backgrounds	18	18	171	108	0%	58%
Fingerprints	62	59	733	892	5%	-18%
Photos	0	0	15	20	N/C	-25%
Accident Requests	107	132	952	1,184	-19%	-20%
Accident Requests Online	179	186	1,620	1,617	-4%	0%
TOTALS	6,866	5,094	65,412	54,309	35%	20%

Professional Standards

The Office of Professional Standards, a unit within Administration, is charged with the compilation and updating of an extensive set of policies and procedures and providing a general operations guideline and code of conduct for officers to follow. In the event that a member of the public does experience a negative interaction with an officer, mechanisms are in place for them to lodge a complaint. All complaints are reviewed and investigations completed in a timely manner.

	This Month	This Month Last Year	YTD	Last YTD	Change By Month	Change YTD
Opened (TOTAL)	5	12	56	57	-58%	-2%
Closed	5	12	56	57	-58%	-2%
Inquiries	0	12	49	52	-100%	-6%
Formal Investigations	0	0	0	5	N/C	-100%
Sustained	3	10	3	38	-70%	-92%
Not-Sustained	0	0	0	0	N/C	N/C
Exhonerated	0	0	0	0	N/C	N/C
Unfounded	1	2	1	0	-50%	N/C